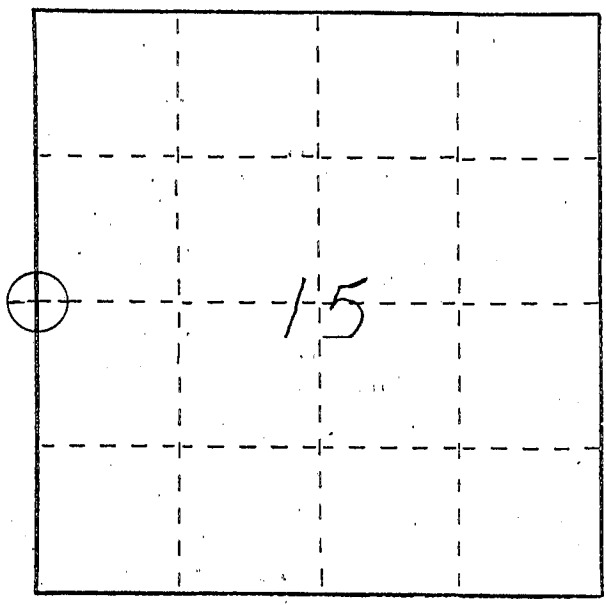


U. S. PUBLIC LAND SURVEY MONUMENT RECORD

INSTRUCTIONS: This record shall show the location of the corner and shall include all of the following nine elements (a through i).

- (a) Identify the corner by reference to the U.S. public land survey system.
- = Corner monument restored.

WEST 1/4 CORNER
SECTION 15
TOWN 4 NORTH
RANGE 5 WEST
GLEN HAVEN TWP.
GRANT CO., WI.

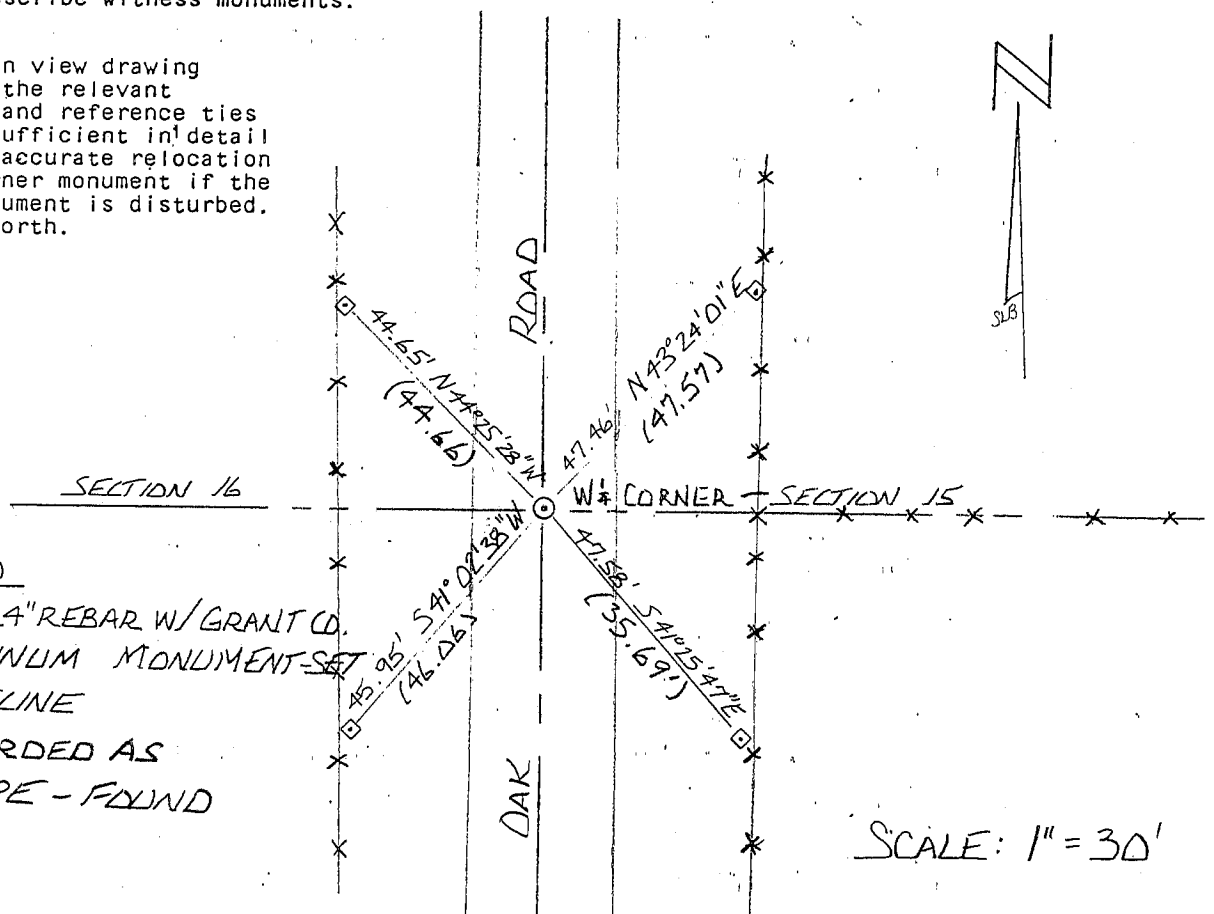


- (b) Describe any record evidence, monument evidence, occupational evidence, testimonial evidence or any other material evidence you considered, and whether the monument was found or placed.

MONUMENT SET IN PLACE OF EXISTING SPIKE AS VERIFIED BY LARRY AUSTIN'S TIE SHEET.

- (c) In the plan view drawing below, provide reference ties to at least 4 witness monuments, or, if the location is within a municipality, to at least 2 witness monuments. (Witness monuments shall be made of concrete, natural stone, iron or other equally durable material, ~~except~~ wood.) Describe witness monuments.

- (d) Show a plan view drawing depicting the relevant monuments and reference ties which is sufficient in detail to enable accurate relocation of the corner monument if the corner monument is disturbed. Indicate north.



LEGEND

- #6 x 24" REBAR W/ GRANT CO. ALUMINUM MONUMENT-SET
- x-x FENCELINE
- () RECORDED AS
- 1" PIPE - FOUND

SCALE: 1" = 30'

(e) Describe any material discrepancy between the location of the corner as restored or reestablished and the location of that corner as previously restored or reestablished by distance and direction. Show the discrepancy on the plan view drawing under (d), above. Show the distances between the corner as previously restored or reestablished and (1) the corner as restored or reestablished, and (2) to at least 2 of the witness monuments shown on the drawing in (d), above.

NONE

(f) Was the corner restored through acceptance of (1) an obliterated evidence location, or, (2) a found perpetuated location?

(1) A FOUND PERPETUATED LOCATION

(g&h) Was the corner reestablished through lost corner proportionate methods? If so, show the method, including the directions and distances to other public land survey corners used as evidence or used for proportioning in determining the corner location?

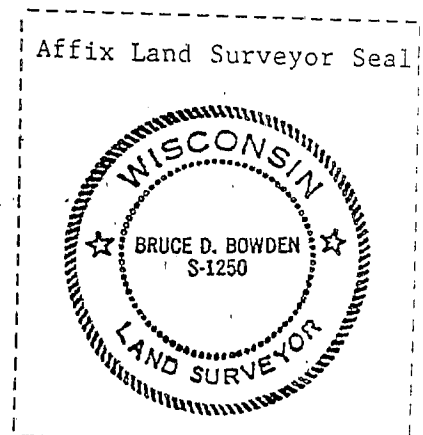
No.

(i) I, BRUCE D. BOWDEN,

(type or print name) certify that the corner location shown on this record was determined by me or under my direction and control and that this U.S. Public Land Survey Monument Record is correct and complete to the best of my knowledge and belief.

Signature

Date



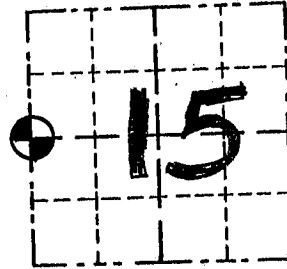
Bruce D. Bowden June 21, 1996

GRANT COUNTY

Survey Monument Record

TYPE OF MONUMENT RAILROAD SPIKE
STATE PLANE COORDINATES: N _____
E _____
ELEVATION — M.S.L. DATUM: _____
THETA ANGLE: _____
FIELD BOOK: 94-04
PAGE _____

CORNER NO. 57
SECTION 15
TOWN 4 N
RANGE 5 W
W 1/4 COR



LOCATION
(Indicated by ●)

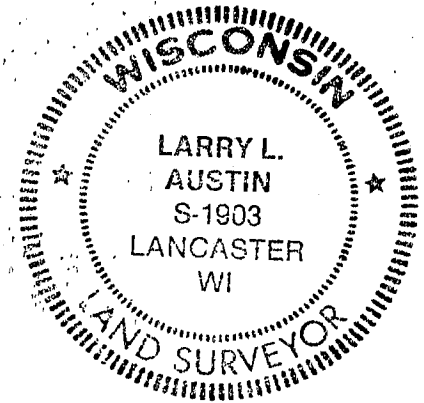
BASIS FOR MONUMENT LOCATION

(Use reverse side if necessary)

Show info such as: History of corner, with reference to Vol. and pg., dates, surveyor; exact description of monument replaced; if location computed, by taped or EDM traverse; landowner, remarks, etc.

SEAL:

FOUND A RAILROAD SPIKE
AT CORNER LOCATION;
ACCEPTED ITS LOCATION AFTER
VERIFICATION BY EDM TRAVERSE



CERTIFIED CORRECT

Larry L. Austin
Registered Land Surveyor

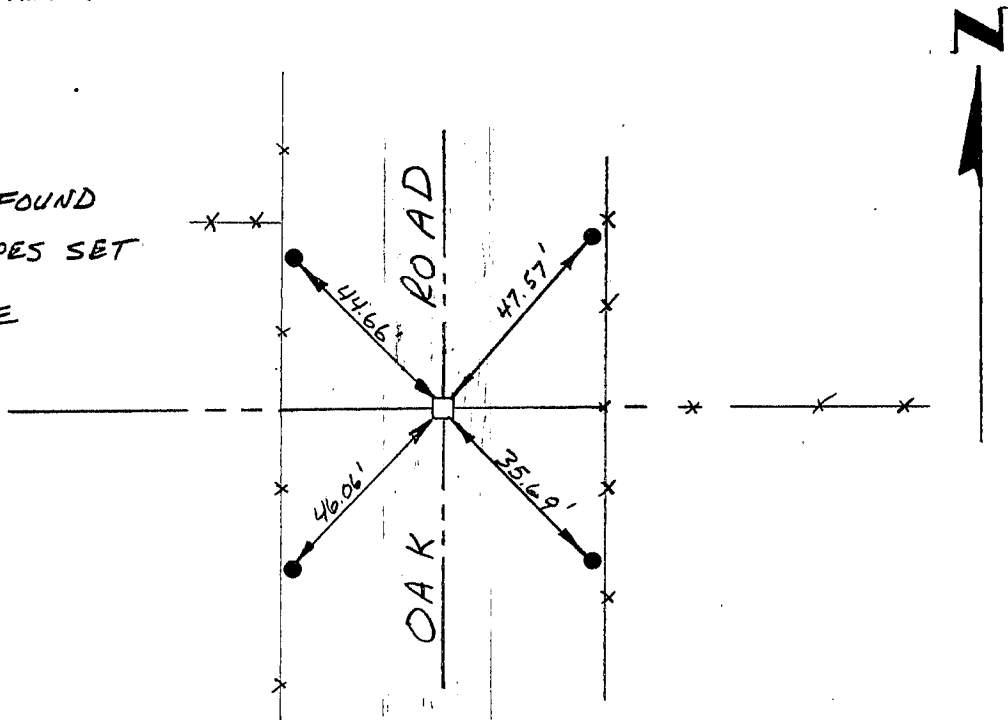
DATE: 1-15-95

TIE SKETCH

Show at least three (3) ties and monument

LEGEND

- RAILROAD SPIKE FOUND
- 1" X 12" IRON PIPES SET
- XX EXISTING FENCE



NO SCALE