

# U.S. PUBLIC LAND SURVEY MONUMENT RECORD - GRANT COUNTY, WI

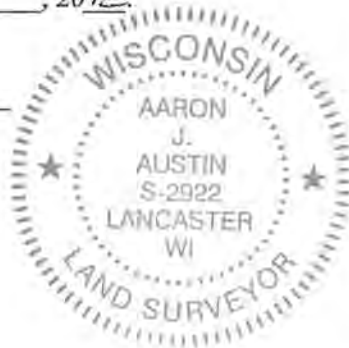
Section 23, Town 4 North Range 5 West, Town of Glen Haven

**CERTIFICATE:**

I, Aaron J. Austin, do hereby certify that the corner location on this record was determined by me and/or under my direct supervision and that this U.S. Public Land Survey Monument Record is correct and complete to the best of my knowledge and belief.

Dated this 30th day of Nov., 2012.

*Aaron J. Austin*  
 Aaron J. Austin, S-2922



● = CORNER LOCATION

HISTORY OF CORNER ESTABLISHMENT:

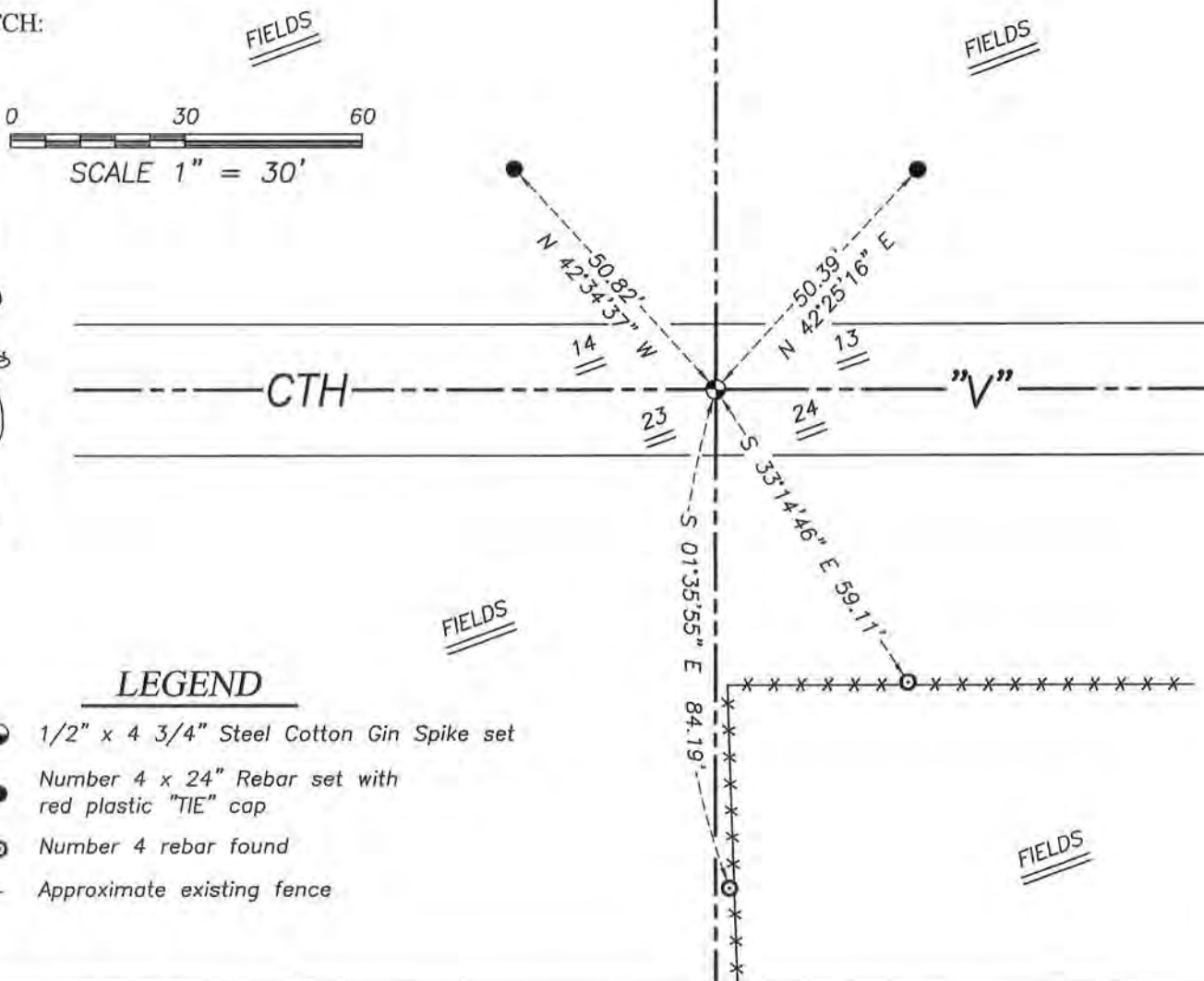
Corner was set in 1832 by Robert Clark. In 1990, Larry Austin set a No. 7 rebar. No other record was found for this corner.

DESCRIPTION OF CORNER EVIDENCE FOUND:

County Highway "V" was recently reconstructed. A tie sheet was prepared by Larry dated 3-23-2003. Only two ties could be found for this corner. I reset the corner based upon those ties and set two additional ties. I verified this location by G.P.S. methods.

DESCRIPTION OF CORNER AND WITNESS MONUMENTS, references and accessories used to perpetuate the original or re-established location of this corner. Witness to corner location Shane Austin

SKETCH:



**LEGEND**

- 1/2" x 4 3/4" Steel Cotton Gin Spike set
- Number 4 x 24" Rebar set with red plastic "TIE" cap
- Number 4 rebar found
- x-x- Approximate existing fence



**Austin Engineering** LLC  
 austinengineeringllc.com

4211 HWY 81 E, LANCASTER, WI 53813  
 PHONE: 608-723-6363 FAX: 608-723-6702

JOB: 12s173  
 G:\T4NR5W\23  
 H:\TIE\T4NR5W\63

FIELDBOOK: TDSR  
 DRAWN BY: SW AUSTIN  
 CREW: SWA-AJA

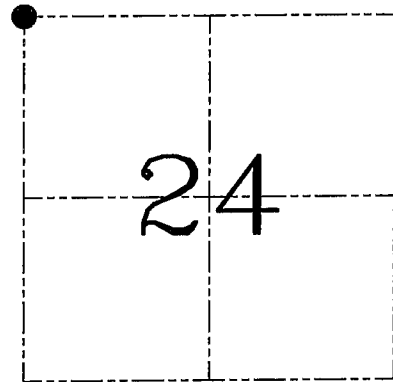
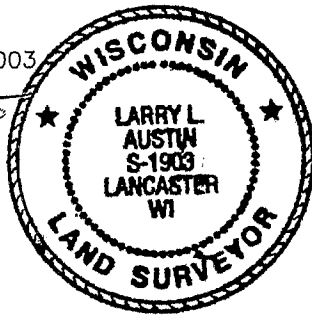
**U.S. PUBLIC LAND SURVEY MONUMENT RECORD – GRANT COUNTY, WI**  
**Section 24, Town 4 North Range 5 West, Town of Beetown**

**CERTIFICATE**

I, Larry L. Austin, do hereby certify that the corner location on this record was determined by me and/or under my direct supervision and that this U.S. public land survey monument record is correct and complete to the best of my knowledge and belief.

Dated this 23rd day of March, 2003

*Larry L. Austin*  
 Larry L. Austin S-1903



● = CORNER LOCATION

**HISTORY OF CORNER ESTABLISHMENT**

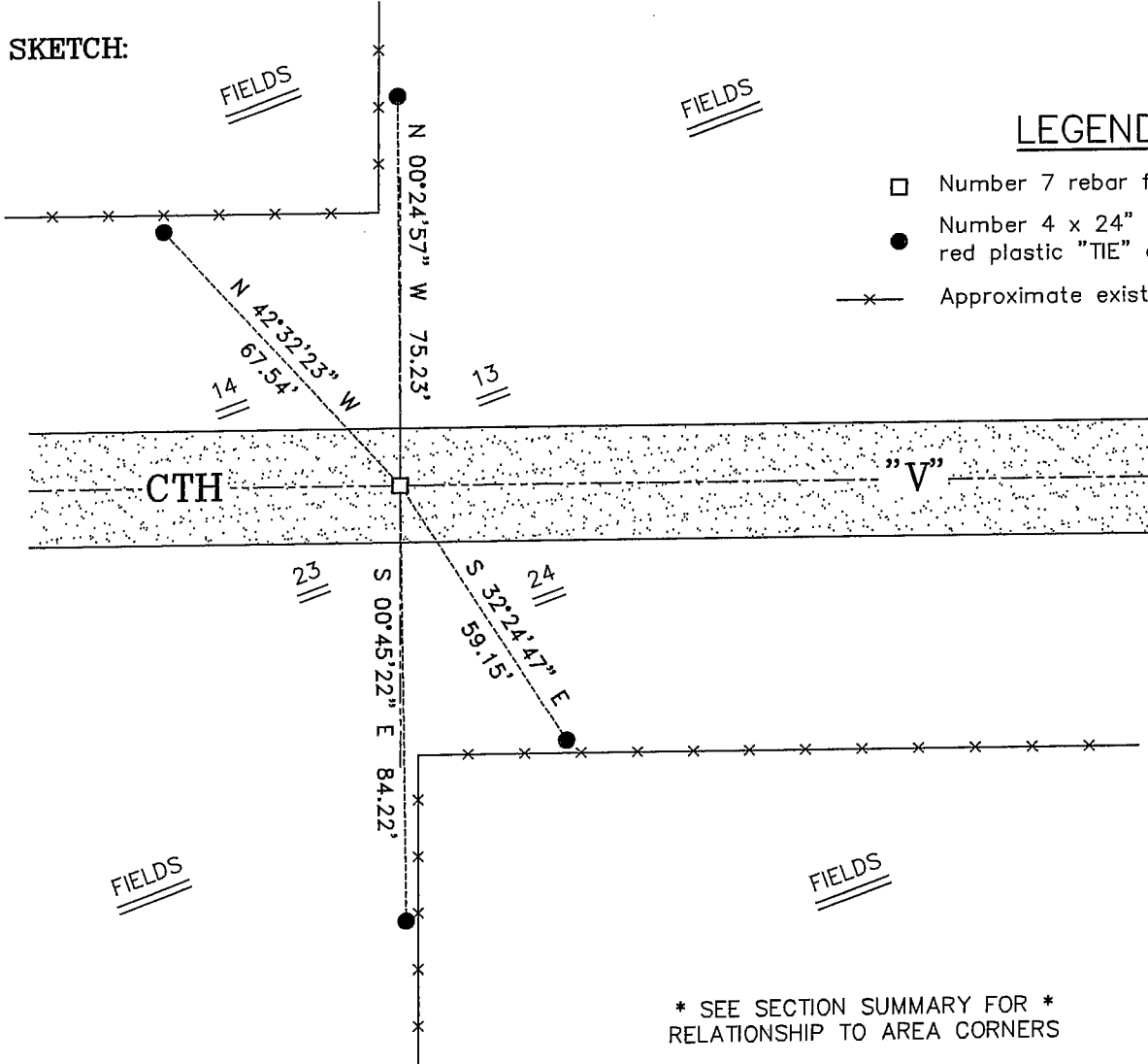
Corner was originally set in 1832 by Robert Clark. In 1990 I set the corner at an occupied location. No other record of the corner was found.

**DESCRIPTION OF CORNER EVIDENCE FOUND**

I found the existing #7 iron bar and accepted it's location after an EDM & GPS traverse of the area. Verified this location using EDM & GPS methods.

**DESCRIPTION OF CORNER AND WITNESS MONUMENTS**, references and accessories used to perpetuate the original or re-established location of this corner. Witnesses to corner location Bobby Sedgwick & Shelby Blindert & Brad Digman

**SKETCH:**



**LEGEND**

- Number 7 rebar found
- Number 4 x 24" Rebar set with red plastic "TIE" cap
- x— Approximate existing fence



\* SEE SECTION SUMMARY FOR \*  
 RELATIONSHIP TO AREA CORNERS

SKETCH NOT TO SCALE

**AUSTIN ENGINEERING, LLC**  
 4211 HWY 81 EAST, LANCASTER, WI 53813  
 PHONE 608-723-6363 FAX 608-723-6702

FIELDBOOK: 99-15  
 G:\T4NR5W\24  
 SWA\TIE\T4NR5W\63  
 JOB NUMBER 03S024

DRAWN BY: SW AUSTIN  
 APPROVED: LL AUSTIN

**CORNER NUMBER 63**

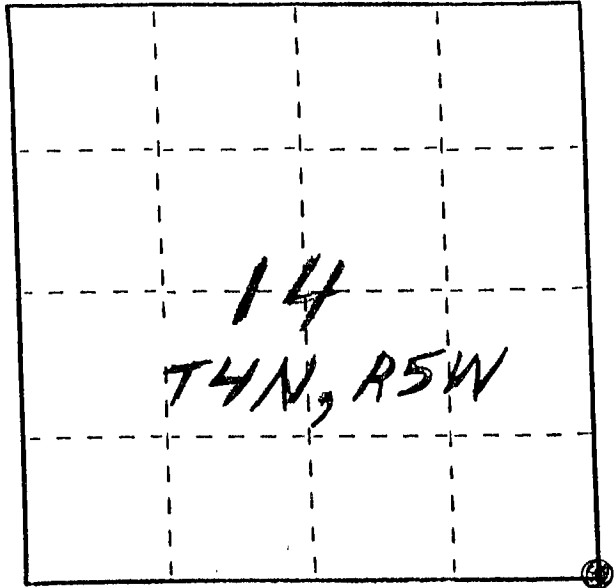
# U. S. PUBLIC LAND SURVEY MONUMENT RECORD

**INSTRUCTIONS:** This record shall show the location of the corner and shall include all of the following nine elements (a through i).

(a) Identify the corner by reference to the U.S. public land survey system.

● = Corner monument restored.

SE COR. SEC. 14  
T4N, R5W, GRANT CO.,  
WISC.



(b) Describe any record evidence, monument evidence, occupational evidence, testimonial evidence or any other material evidence you considered, and whether the monument was found or placed.

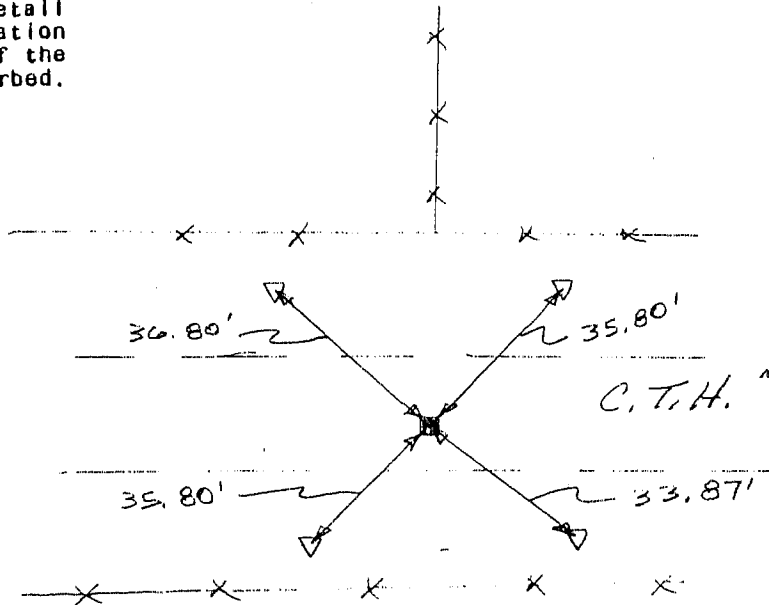
MONUMENT WAS PLACED BASED ON OCCUPIED  
R/W FENCES & D.O.T. PLAN # S 0201(2)  
NO OTHER EVIDENCE OF COR. FOUND SINCE  
ORIG. GOV'T SURVEYS

(c) In the plan view drawing below, provide reference ties to at least 4 witness monuments, or, if the location is within a municipality, to at least 2 witness monuments. (Witness monuments shall be made of concrete, natural stone, iron or other equally durable material, ~~except~~ wood.) Describe witness monuments.

(d) Show a plan view drawing depicting the relevant monuments and reference ties which is sufficient in detail to enable accurate relocation of the corner monument if the corner monument is disturbed. Indicate north.



NO SCALE



GRANT COUNTY CLERK  
**RECEIVED**

■ = 7/8" X 24" REBAR SET  
= SE COR.

---X---X--- = EX. FENCE

SEP 20 1990

▽ = 3/8" X 10" STEEL PEG SET  
= TIE

(e) Describe any material discrepancy between the location of the corner as restored or reestablished and the location of that corner as previously restored or reestablished by distance and direction. Show the discrepancy on the plan view drawing under (d), above. Show the distances between the corner as previously restored or reestablished and (1) the corner as restored or reestablished, and (2) to at least 2 of the witness monuments shown on the drawing in (d), above.

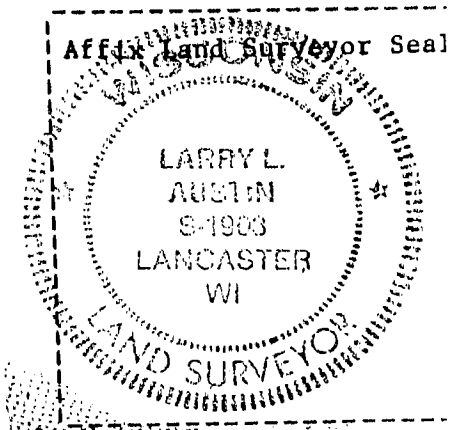
NONE

(f) Was the corner restored through acceptance of (1) an obliterated evidence location, or, (2) a found perpetuated location?

(1) OBLITERATED EVIDENCE LOCATION

(g&h) Was the corner reestablished through lost corner proportionate methods? If so, show the method, including the directions and distances to other public land survey corners used as evidence or used for proportioning in determining the corner location?

NO



(1) I, LARRY L. AUSTIN  
(type or print name) certify that the corner location shown on this record was determined by me or under my direction and control and that this U.S. Public Land Survey Monument Record is correct and complete to the best of my knowledge and belief.

Larry L. Austin  
Signature

6/20/90  
Date