

**U.S. PUBLIC LAND SURVEY MONUMENT RECORD - GRANT COUNTY, WI**

Section 24, Town 4 North Range 5 West, Town of Beetown

**CERTIFICATE:**

I, Aaron J. Austin, do hereby certify that the corner location on this record was determined by me and/or under my direct supervision and that this U.S. Public Land Survey Monument Record is correct and complete to the best of my knowledge and belief.

Dated this 13th day of April, 2014.

*Aaron J. Austin*  
 Aaron J. Austin, S-2922



● = CORNER LOCATION

HISTORY OF CORNER ESTABLISHMENT:

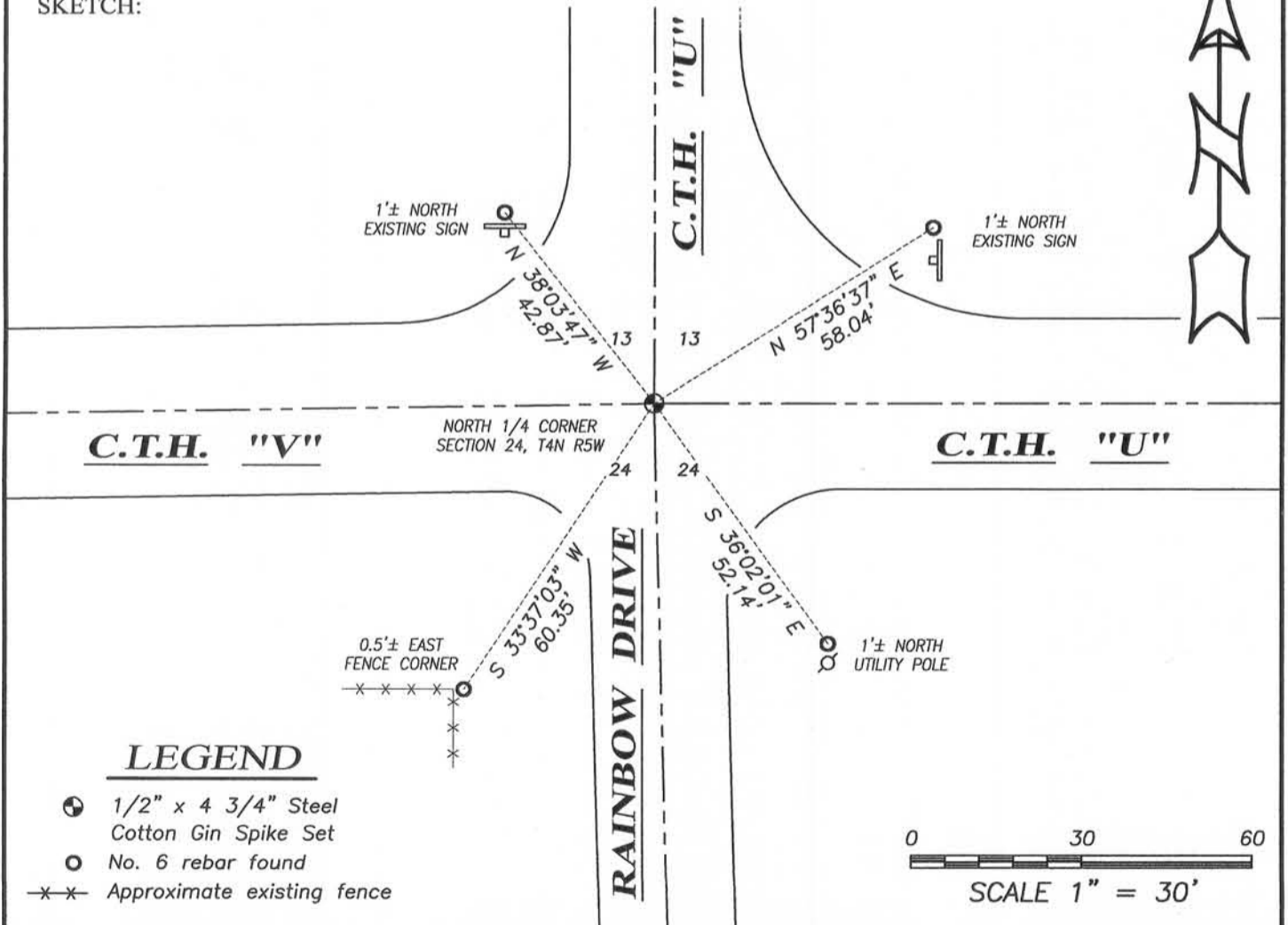
- 1844 Wiltse tied to the corner on a Survey filed in Book A, Page 190.
- 1844 Wiltse tied to the corner on a survey filed in Book A, Page 225.
- 1875 Barber tied to the corner on a Survey filed in Book B, Page 552.
- 2002 L. Austin reset the corner on a Survey filed in Book 14, Page 36.
- 2003 L. Austin prepared a U.S. Public Land Survey Monument Record.
- 2012 A. Austin tied to the corner on a Survey filed in Book 31, Page 11.

DESCRIPTION OF CORNER EVIDENCE FOUND:

The monument appeared to have been removed during road reconstruction. I found all four ties in place and set a 1/2" x 4 3/4" Steel Cotton Gin Spike at the corner location based upon these ties. This location coincided with measurements taken to this corner on a survey I prepared, filed in Book 31, Page 11. I verified this location with G.P.S. and E.D.M. methods.

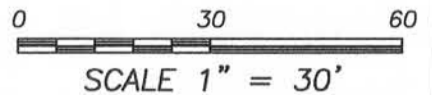
DESCRIPTION OF CORNER AND WITNESS MONUMENTS, references and accessories used to perpetuate the original or re-established location of this corner. Witnesses to corner location Shane Austin.

SKETCH:



**LEGEND**

- ⊕ 1/2" x 4 3/4" Steel Cotton Gin Spike Set
- No. 6 rebar found
- x-x- Approximate existing fence



**Austin Engineering LLC**  
 austinengineeringllc.com  
 4211 HWY 81 E, LANCASTER, WI 53813  
 PHONE: 608-723-6363 FAX: 608-723-6702

JOB NO: 14s134  
 H:CRD\14s134  
 H:\TIE\T4NR5W\62(1)

FIELDBOOK: TDSR  
 DRAWN BY: AJ AUSTIN  
 CREW: SW AUSTIN

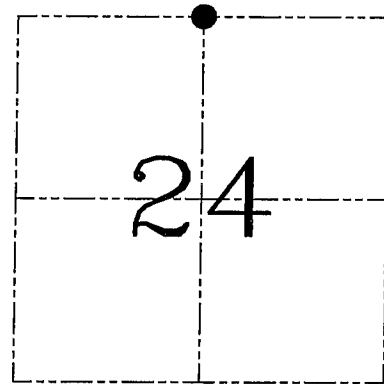
**U.S. PUBLIC LAND SURVEY MONUMENT RECORD – GRANT COUNTY, WI**  
**Section 24, Town 4 North Range 5 West, Town of Beetown**

**CERTIFICATE**

I, Larry L. Austin, do hereby certify that the corner location on this record was determined by me and/or under my direct supervision and that this U.S. public land survey monument record is correct and complete to the best of my knowledge and belief.

Dated this 23rd day of March, 2003

*Larry L. Austin*  
 Larry L. Austin S-1903



● = CORNER LOCATION

**HISTORY OF CORNER ESTABLISHMENT**

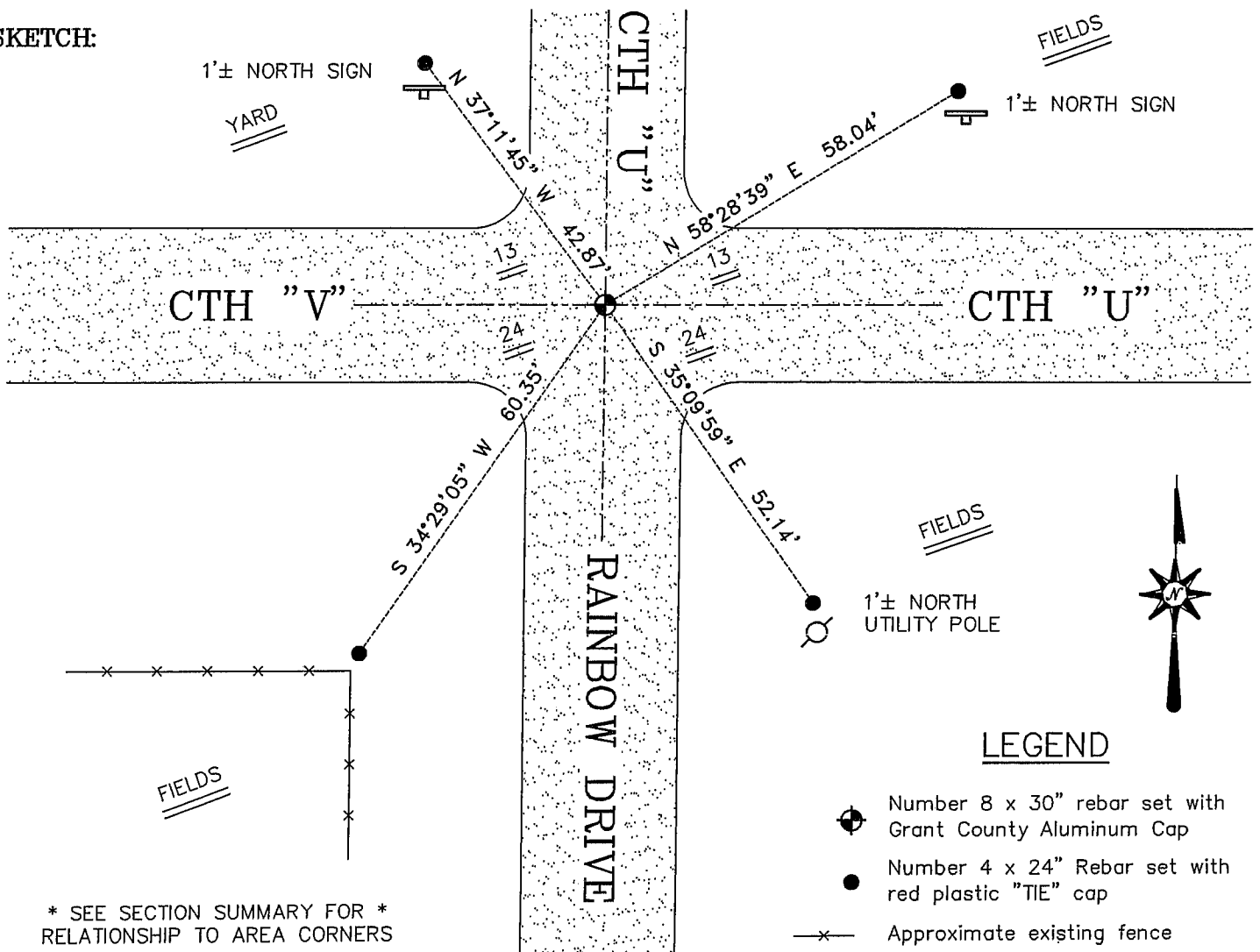
Corner was originally set in 1832 by Robert Clark. In 1875 Barber found an old stake and replaced it with a stone. No other record of the corner was found.

**DESCRIPTION OF CORNER EVIDENCE FOUND**

I was unable to locate the found stone due to pavement. I reset the corner proportionately and on-line between the Northeast and Northwest corners of Section 24. This location fit occupied centerline – centerline very well. Verified this location using EDM & GPS methods.

**DESCRIPTION OF CORNER AND WITNESS MONUMENTS**, references and accessories used to perpetuate the original or re-established location of this corner. Witnesses to corner location Bobby Sedgwick & Shelby Blindert & Brad Digman

**SKETCH:**



\* SEE SECTION SUMMARY FOR \*  
 RELATIONSHIP TO AREA CORNERS

**AUSTIN ENGINEERING, LLC**  
 4211 HWY 81 EAST, LANCASTER, WI 53813  
 PHONE 608-723-6363 FAX 608-723-6702

FIELDBOOK: 99-15  
 G: \T4NR5W\24  
 SWA\TIE\T4NR5W\62  
 JOB NUMBER 03S024

DRAWN BY: SW AUSTIN  
 APPROVED: LL AUSTIN

**CORNER NUMBER 62**