

U.S. PUBLIC LAND SURVEY MONUMENT RECORD - GRANT COUNTY, WI
 Section 19, Town 3 North Range 1 West, Town of Platteville

CERTIFICATE:

I, Aaron J. Austin, do hereby certify that the corner location on this record was determined by me and/or under my direct supervision and that this U.S. Public Land Survey Monument Record is correct and complete to the best of my knowledge and belief.

Dated this 19th day of May, 2014.

Aaron J. Austin
 Aaron J. Austin, S-2922



● = CORNER LOCATION

HISTORY OF CORNER ESTABLISHMENT:

1833-Robert Clark set the original corner.
 1995-David Burbach tied to the corner on a Survey filed in Book Y, Page 11.
 2002-Larry Austin tied to the corner on a Survey filed in Book 10, Page 93.
 2011-Aaron Austin tied to the corner on a Survey filed in Book 29, Page 86.

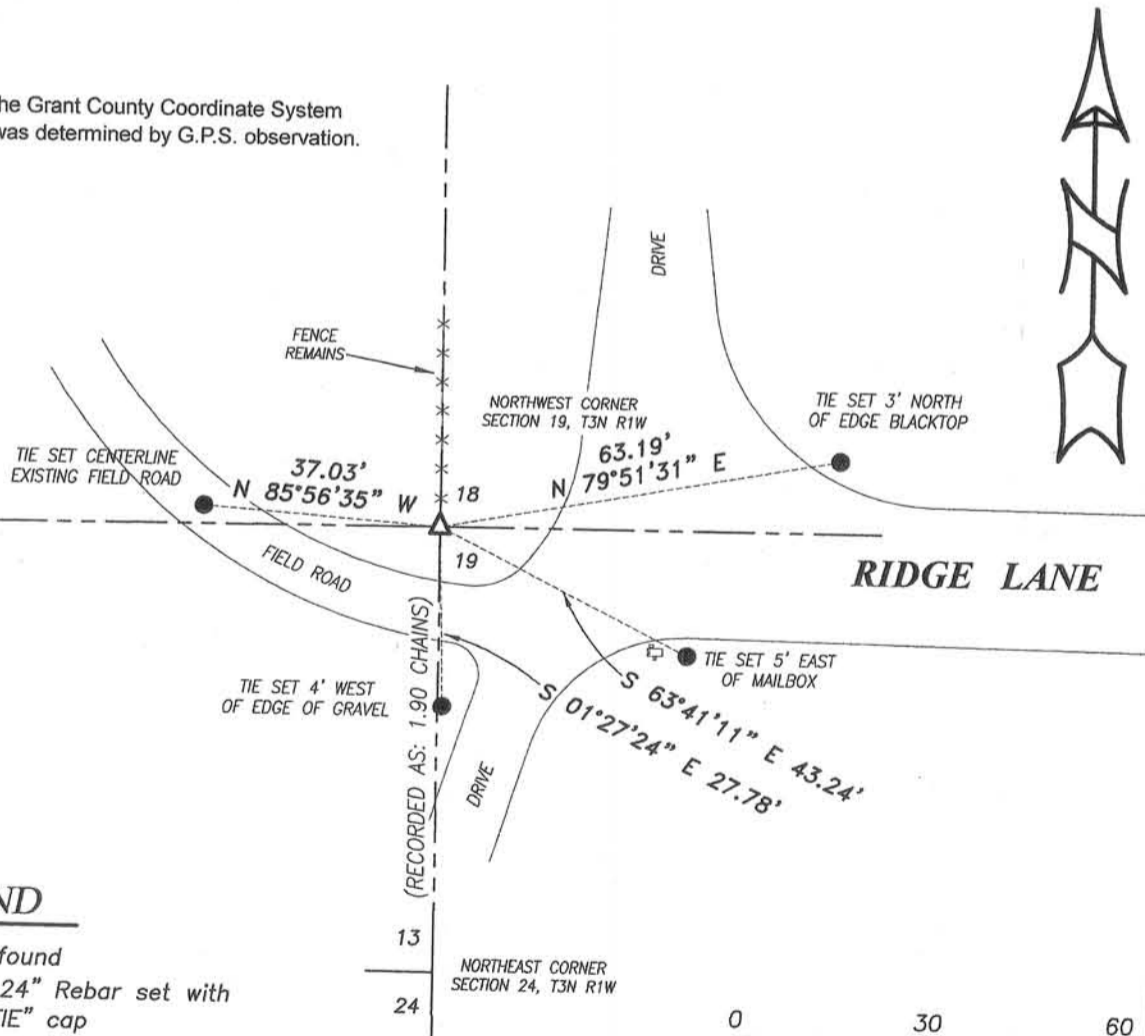
DESCRIPTION OF CORNER EVIDENCE FOUND:

I found and accepted a 1" iron pipe which was tied to in all of the above referenced surveys.
 I set 4 ties and verified this location with G.P.S. methods.

DESCRIPTION OF CORNER AND WITNESS MONUMENTS, references and accessories used to perpetuate the original or re-established location of this corner. Witnesses to corner location Shane Austin.

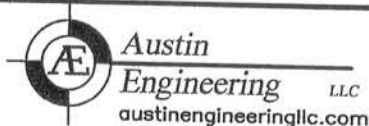
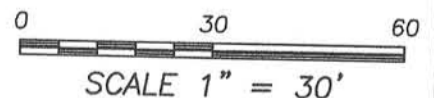
SKETCH:

Bearings referenced to the Grant County Coordinate System (2011 adjustment) which was determined by G.P.S. observation.



LEGEND

- ▲ 1" Iron pipe found
- Number 4 x 24" Rebar set with red plastic "TIE" cap



4211 HWY 81 E, LANCASTER, WI 53813
 PHONE: 608-723-6363 FAX: 608-723-6702

JOB NO: 14s080
 G:\14s080
 H:\TIE\T3NR1W\73

FIELDBOOK: TDSR
 DRAWN BY: AJ AUSTIN
 CREW: SW AUSTIN

Survey Monument Record

TYPE OF MONUMENT 3/4" REBAR w/ Aluminum Cap Grant Co.

STATE PLANE COORDINATES: N _____
E _____

ELEVATION — M.S.L. DATUM: _____

THETA ANGLE: _____

FIELD BOOK: 95-9 Mon & Ties Set by P. B. Rice

PAGE _____

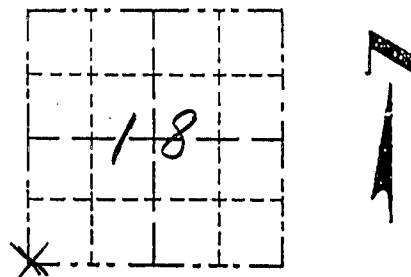
CORNER NO. _____
SECTION 18
TOWN 4N
RANGE 4W

JUL 11 1996

BASIS FOR MONUMENT LOCATION

(Use reverse side if necessary)

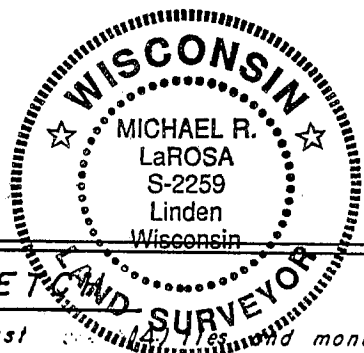
Show info such as: History of corner, with reference to Vol. and pg., dates, surveyor; exact description of monument replaced; if location computed, by taped or EDM traverse; landowner, remarks, etc.



LOCATION
(Indicated by "X")

- FOUND PERPETUATED LOCATION
- OBLITERATED EVIDENCE LOCATION
- LOST CORNER (RESTORED BY PROPORTIONATE METHODS)

There are no recent survey records of this corner. Occupational evidence is a road center line to the east and abandoned roadbed to the west and a fence line north. The corner location was computed using an average of prorates between occupied 40 corners along the south line of 18-4N-4W and applied to record measurements from a survey dated 2/18/1844 (Vol. A P. 182). The corner was placed 1321.37' north of the occupied 40 line to the south in line with the fence to the north. It fit extremely well for line with all of the occupied 40 corners to the east.



CERTIFIED CORRECT TO THE BEST OF MY KNOWLEDGE AND BELIEF

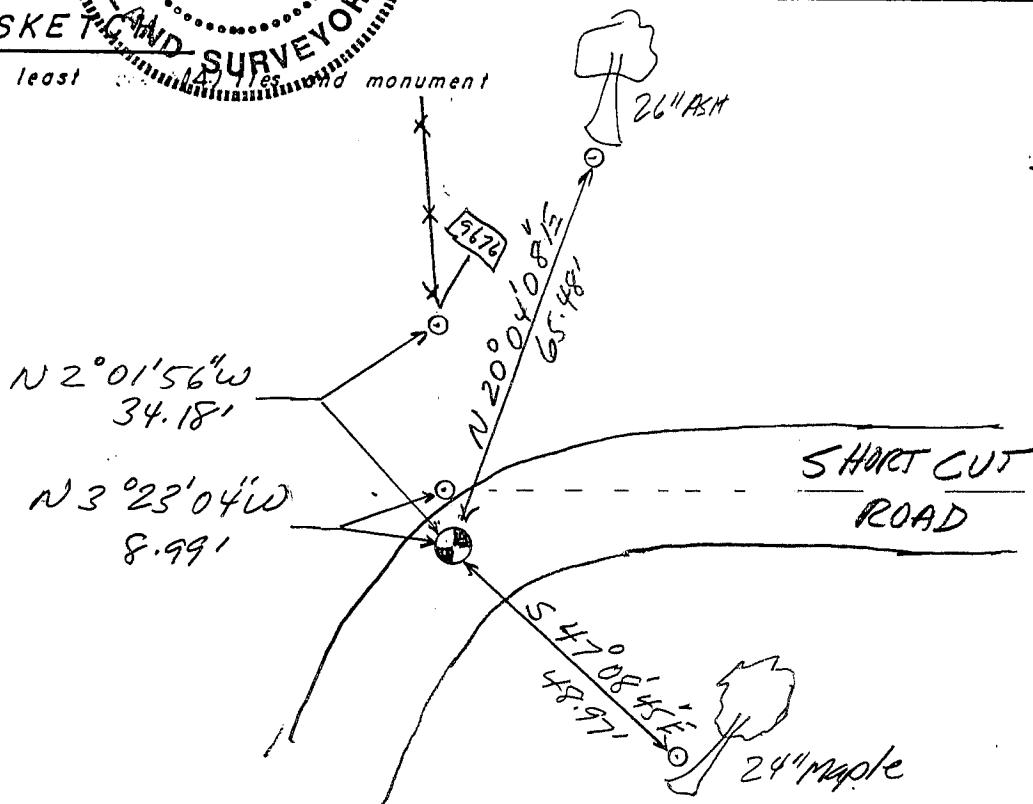
Michael R. LaRosa

Registered Land Surveyor

DATE: 6/18/1996

TIE SKETCH

Show at least _____ and monument



Legend
 * * * fence
 o 1/2" Iron Pipe Set