

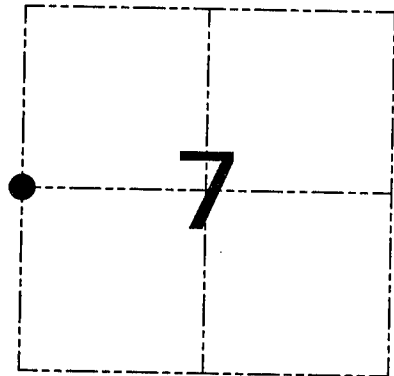
**U.S. PUBLIC LAND SURVEY MONUMENT RECORD - GRANT COUNTY, WI**  
 Section 7, Town 4 North Range 4 West, Town of Beetown

**CERTIFICATE**

I, Larry L. Austin, do hereby certify that the corner location on this record was determined by me and/or under my direct supervision and that this U.S. public land survey monument record is correct and complete to the best of my knowledge and belief.

Dated this 6th day of April, 2007

*Larry L. Austin*  
 Larry L. Austin S-1903



● = CORNER LOCATION

**HISTORY OF CORNER ESTABLISHMENT**

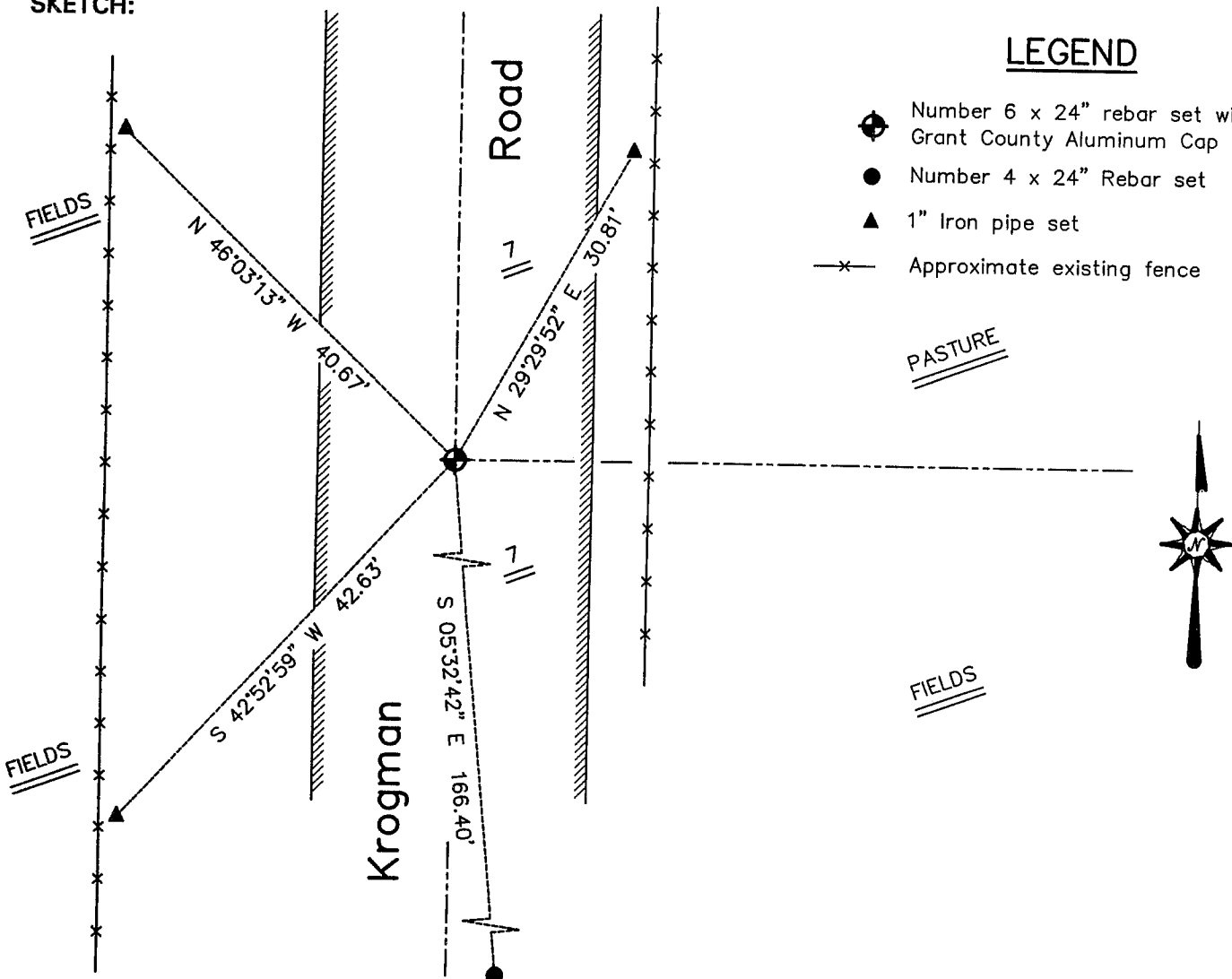
Corner was originally set in 1832 by Sibley. In 1844 Wiltse tied to the corner. In 1880 Joel Barber tied to the corner. In 1897 Sampson tied to the corner. No other record of the corner was found.

**DESCRIPTION OF CORNER EVIDENCE FOUND**

I found no evidence to the location of Sampson or Barber's corner. I reset the corner proportionately between the Northwest and Southwest corners of Section 7.

**DESCRIPTION OF CORNER AND WITNESS MONUMENTS**, references and accessories used to perpetuate the original or re-established location of this corner. Witnesses to the corner location Bobby Sedgwick & Dan Ketchum

**SKETCH:**



SKETCH NOT TO SCALE

**AUSTIN ENGINEERING, LLC**

4211 HWY 81 EAST, LANCASTER, WI 53813  
 PHONE 608-723-6363 FAX 608-723-6702

FIELDBOOK: SDR33, 9602  
 G: \T4NR4W\07  
 C: \SWA\TIE\T4NR4W\34  
 CREW: BS-DK

DRAWN BY: SW AUSTIN  
 APPROVED: LL AUSTIN

**CORNER NUMBER 34**