

U.S. PUBLIC LAND SURVEY MONUMENT RECORD - GRANT COUNTY, WI

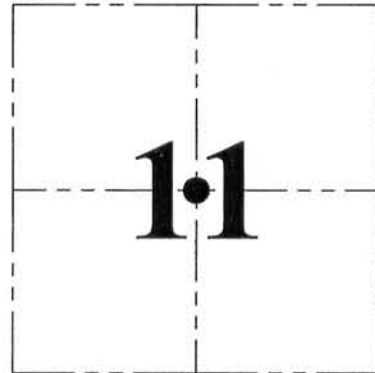
Section 11, Town 4 North Range 5 West, Town of Glen Haven

CERTIFICATE:

I, Aaron J. Austin, do hereby certify that the corner location on this record was determined by me and/or under my direct supervision and that this U.S. Public Land Survey Monument Record is correct and complete to the best of my knowledge and belief.

Dated this 20th day of Nov., 2012.

Aaron J. Austin
 Aaron J. Austin, S-2922



● = CORNER LOCATION

HISTORY OF CORNER ESTABLISHMENT:

Corner was not set with Original Surevys.
 No other record found for this corner.

DESCRIPTION OF CORNER EVIDENCE FOUND:

I set this corner at the intersection of the North-South 1/4 lines and the East-West 1/4 lines. I verified this location with G.P.S. methods of the area.

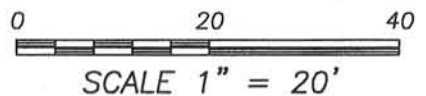
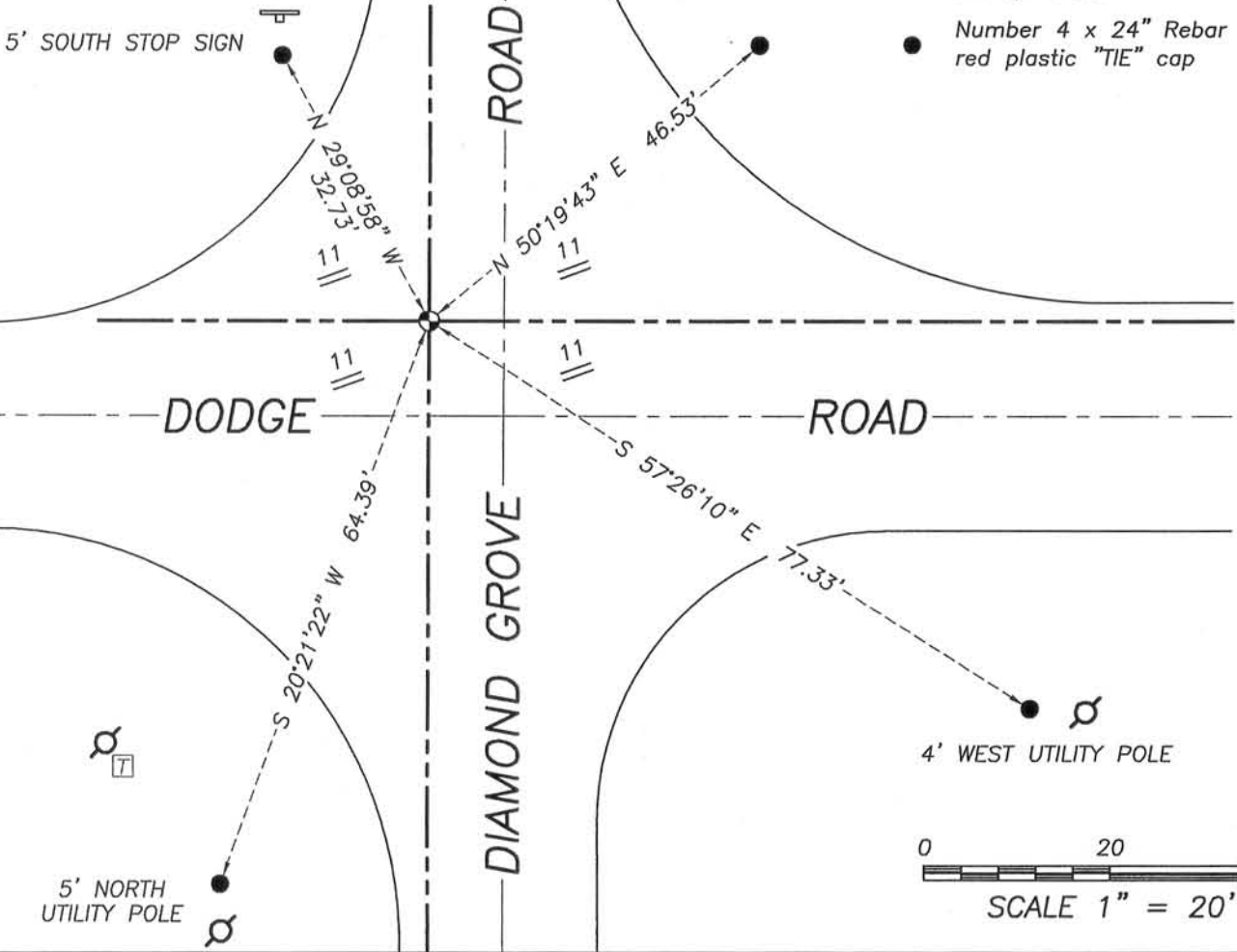
DESCRIPTION OF CORNER AND WITNESS MONUMENTS, references and accessories used to perpetuate the original or re-established location of this corner. Witness to corner location Shane Austin

SKETCH:

5' SOUTH STOP SIGN

LEGEND

- 1/2" x 4 3/4" Steel Cotton Gin spike set
- Number 4 x 24" Rebar set with red plastic "TIE" cap



Austin
 Engineering LLC
 austinengineeringllc.com

4211 HWY 81 E, LANCASTER, WI 53813
 PHONE: 608-723-6363 FAX: 608-723-6702

JOB: 12s174
 G:\T4NR5W\23
 H:\TIE\T4NR5W\38A

FIELDBOOK: TDSR
 DRAWN BY: SW AUSTIN
 CREW: SWA-AJA

38A

DEC 04 2012