

45044

U.S. PUBLIC LAND SURVEY MONUMENT RECORD - GRANT COUNTY, WI

Section 11, Town 4 North Range 5 West, Town of Glen Haven (a)

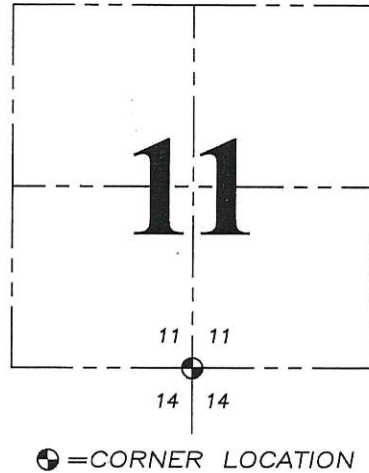
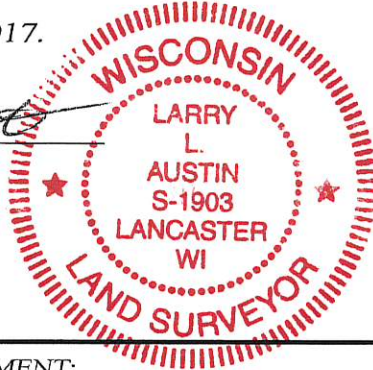
NOTE: This form is intended and designed to fulfill all requirements of the Wisconsin Administrative Code Chapter A-E 7.08, U.S. Public Land Survey Monument Record (3) (a) (b) (c) (d) (e) (f) (g) (h) (i).

CERTIFICATE: (i)

I, Larry L. Austin, Wisconsin Professional Land Surveyor, do hereby certify that the corner location on this record was determined by me and/or under my direct supervision and that this U.S. Public Land Survey Monument Record is correct and complete to the best of my knowledge and belief.

Dated this 3rd day of May, 2017.

Larry L. Austin
Larry L. Austin, S-1903



Grant County Coordinates:
NAD 83 (2011)
Northing: 516,947.80
Easting: 728,203.90

HISTORY OF CORNER ESTABLISHMENT:

Original corner was set in 1832 by Robet Clark. Corner was also measured to in 1848 by Geo R. Stuntz. I set the corner and prepared a Survey Monument Record dated 7/8/1999.

DESCRIPTION OF CORNER EVIDENCE FOUND: (b) (f) (g) (h)

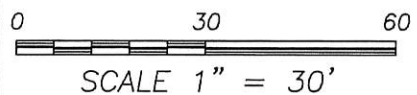
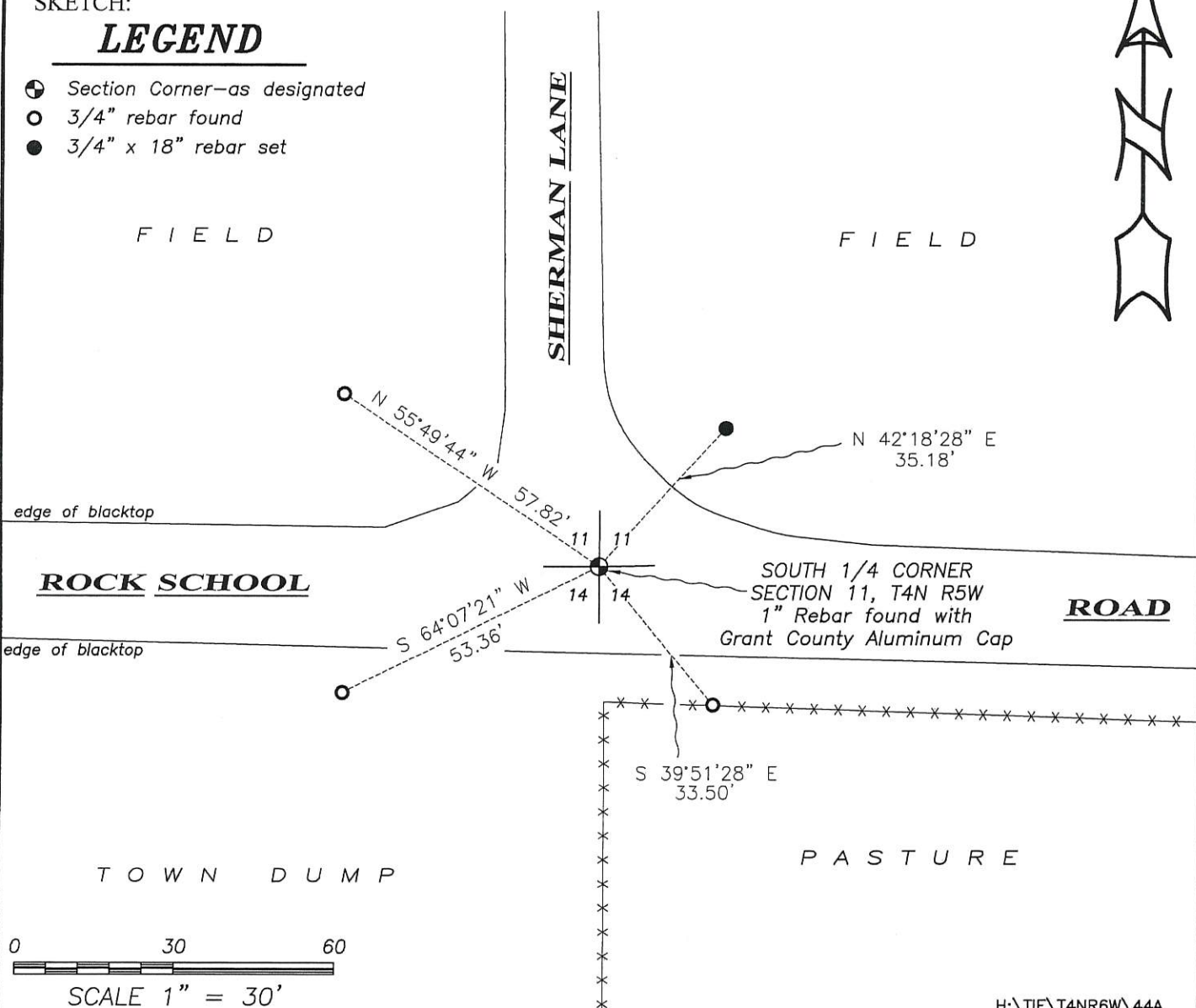
I found the 1" rebar with cap set by Myself. I found 3 of the witness corners and set one additional witness corner. Corner location was verified with G.P.S. and E.D.M. methods

DESCRIPTION OF CORNER AND WITNESS MONUMENTS, references and accessories used to perpetuate the original or re-established location of this corner. (c) (d) (e)
Witnesses to corner location Shane Austin, Owen Austin.

SKETCH:

LEGEND

- Section Corner—as designated
- 3/4" rebar found
- 3/4" x 18" rebar set

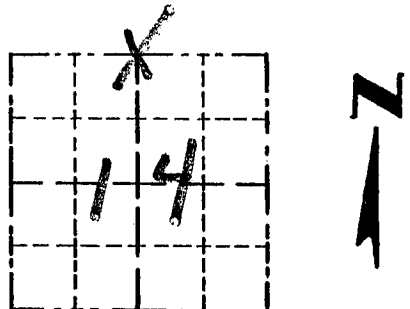


Survey Monument Record

TYPE OF MONUMENT 3/4" X 24" IRON BAR
SET

CORNER NO. 44
 SECTION 14
 TOWN 4N
 RANGE 5W

FIELD BOOK: 97-01
 PAGE 26



LOCATION
 (Indicated by "X")

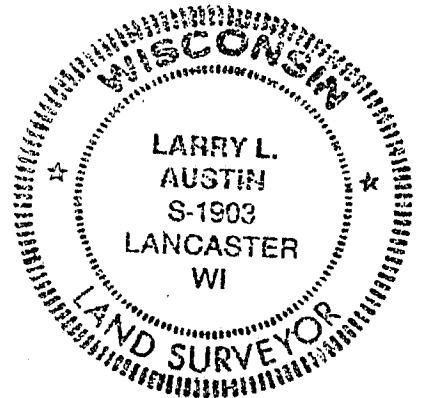
BASIS FOR MONUMENT LOCATION

(Use reverse side if necessary)

Show info such as: History of corner, with reference to Vol. and pg., dates, surveyor; exact description of monument replaced; if location computed, by taped or EDM traverse; landowner, remarks, etc.

CORNER SET IN 1832 BY CLARK. NO RECORD FOUND SINCE ORIGINAL SURVEY; CORNER WAS SET CENTERLINE, CENTERLINE OF ROADS. THIS LOCATION FITS WELL 1/2 MILE EAST AND WEST. VERIFIED ITS LOCATION USING EDM. METHODS.

SEAL:



CERTIFIED CORRECT

Larry L. Austin
 Registered Land Surveyor

DATE: 3-28-97

TIE SKETCH

Show at least three (3) ties and monument

LEGEND

- ⊕ 3/4" X 24" IRON BAR SET
- 1/2" X 15" IRON BAR SET
- EXISTING FENCE

