

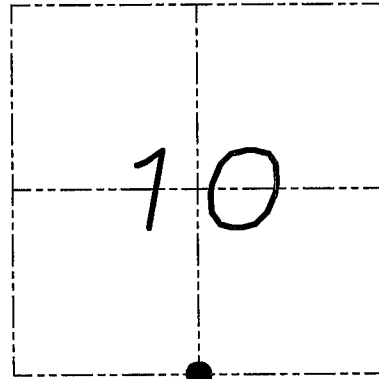
U.S. PUBLIC LAND SURVEY MONUMENT RECORD

Section 10, Town 4 North Range 5 West, Town of Glen Haven, Grant County, Wisconsin

CERTIFICATE

I, Larry L. Austin, do hereby certify that the corner location on this record was determined by me and/or under my direct supervision and that this U.S. public land survey monument record is correct and complete to the best of my knowledge and belief.

Larry L. Austin
 Larry L. Austin, S-1903 S-1903 date
 WISCONSIN LAND SURVEYOR
 LARRY L. AUSTIN
 AUG 14 1988
 LANCASTER WI



● = CORNER LOCATION

HISTORY OF CORNER

Corner was originally set in 1832 by Clark. In 1995 I set and tied the corner. No other record of the corner was found.

CORNER EVIDENCE FOUND

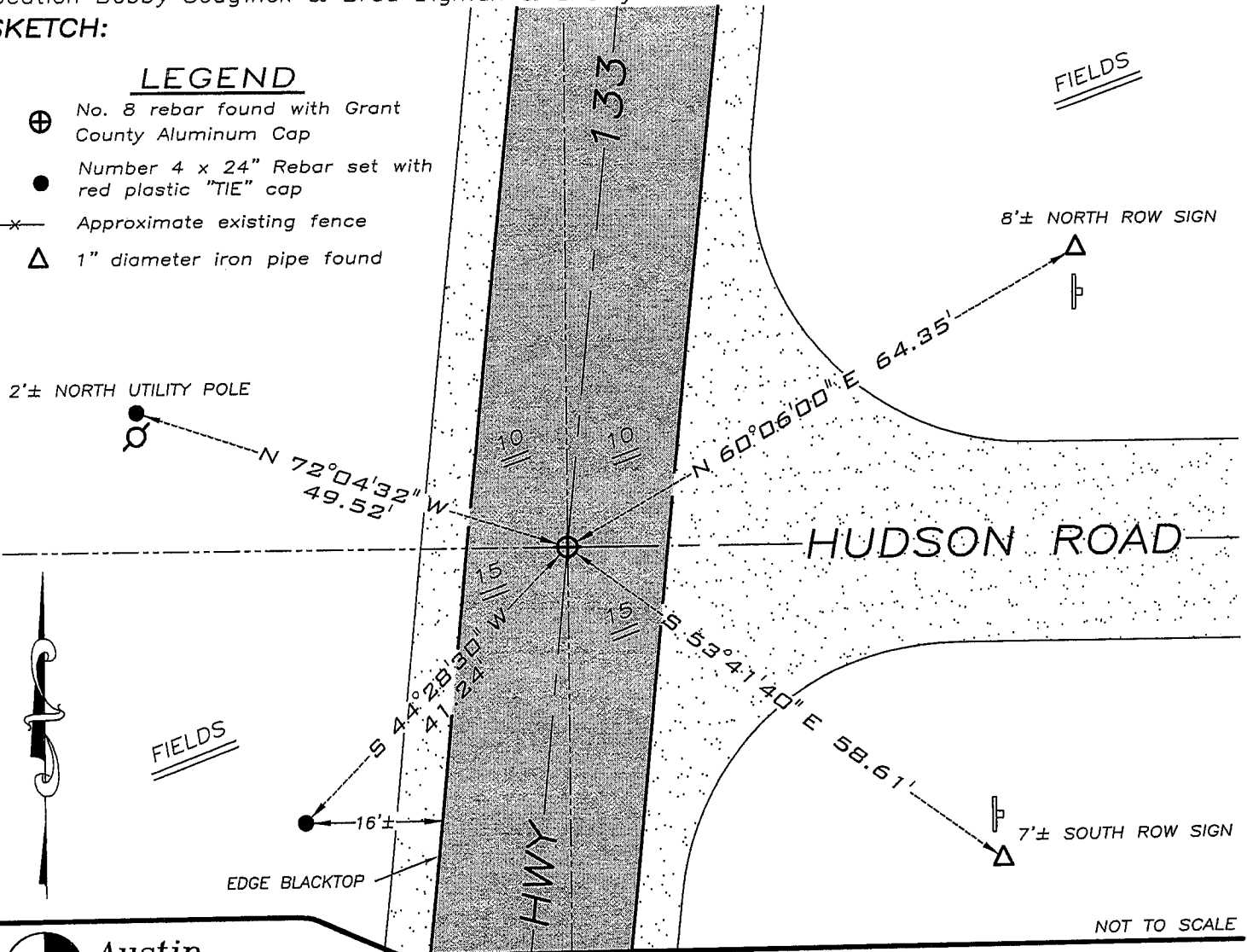
The monument at this location appears to have been replaced due to road construction. I found and accepted this County monument and tied it as shown below. Verified this location using EDM & GPS methods.

DESCRIPTION OF CORNER AND WITNESS MONUMENTS, references and accessories used to perpetuate the original or re-established location of this corner. Witnesses to monument location Bobby Sedgwick & Brad Digman & Shelby Blindert

SKETCH:

LEGEND

- ⊕ No. 8 rebar found with Grant County Aluminum Cap
- Number 4 x 24" Rebar set with red plastic "TIE" cap
- x- Approximate existing fence
- △ 1" diameter iron pipe found



Austin Engineering LLC

4211 HWY 81 E, LANCASTER, WI 53813
 PHONE 608-723-6363 FAX 608-723-6702

JOB NUMBER 08S176-MYERS
 FIELDBOOK: TDSR, 2708
 G:\T4NR5W\21
 H:\TIE\T4NR5W\46

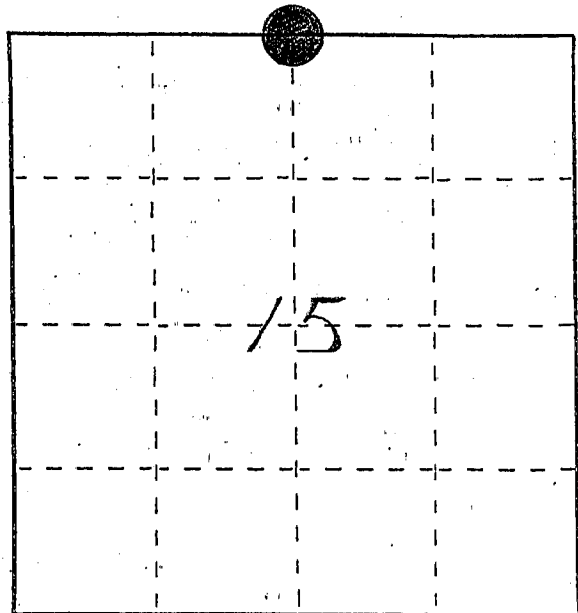
DRAWN BY: SW AUSTIN
 APPROVED: LL AUSTIN

U. S. PUBLIC LAND SURVEY MONUMENT RECORD

INSTRUCTIONS: This record shall show the location of the corner and shall include all of the following nine elements (a through i).

- (a) Identify the corner by reference to the U.S. public land survey system.
- = Corner monument restored.

NORTH 1/4 CORNER
SECTION 15
TOWN 4 NORTH
RANGE 5 WEST
GLEN HAVEN TWP.
GRANT CO., WI.

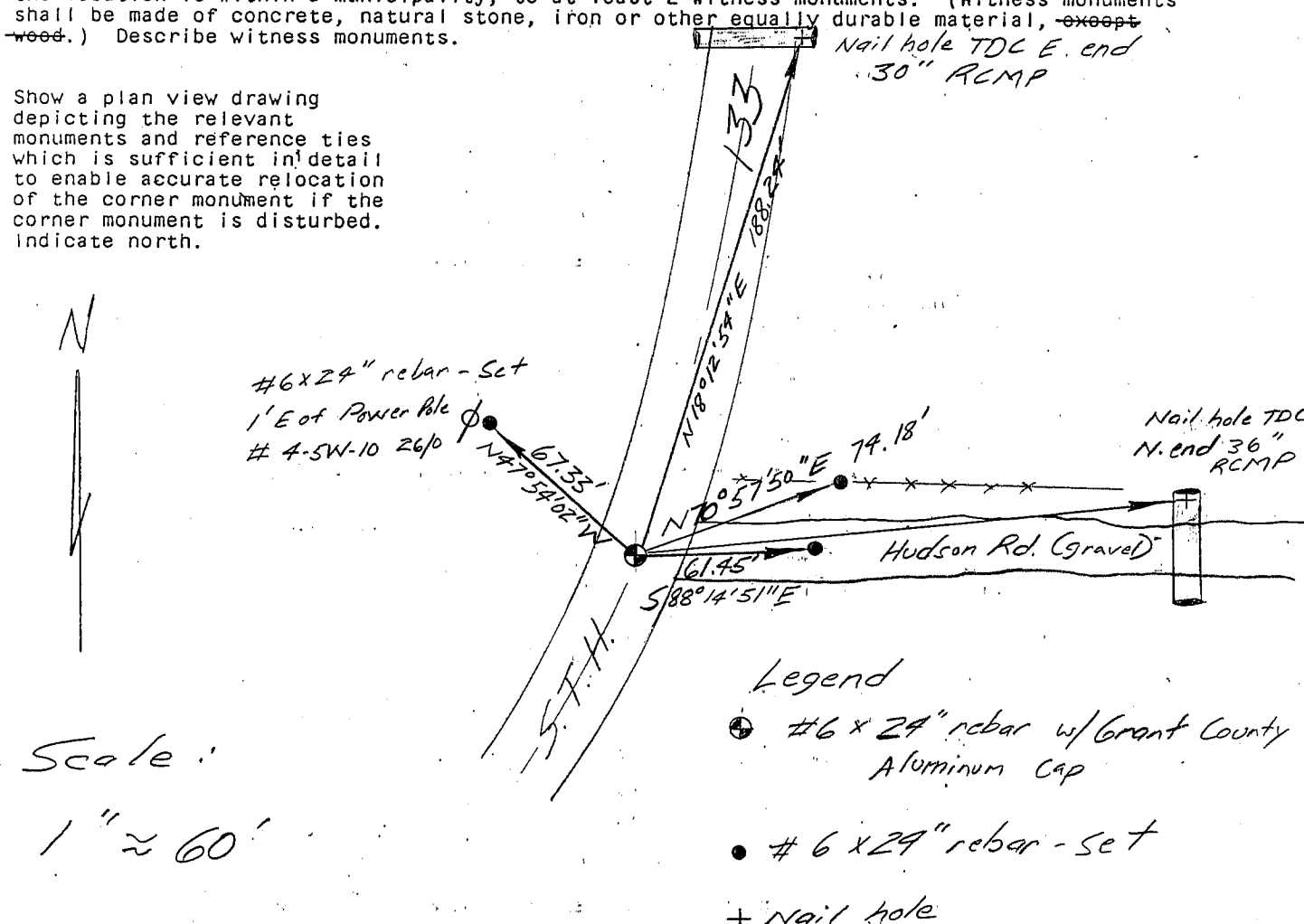


- (b) Describe any record evidence, monument evidence, occupational evidence, testimonial evidence or any other material evidence you considered, and whether the monument was found or placed.

Monument set from existing physical evidence of roads and fences after verification by proportionate measurements from a GPS and EDM survey of the area.

- (c) In the plan view drawing below, provide reference ties to at least 4 witness monuments, or, if the location is within a municipality, to at least 2 witness monuments. (Witness monuments shall be made of concrete, natural stone, iron or other equally durable material, ~~except wood.~~) Describe witness monuments.

- (d) Show a plan view drawing depicting the relevant monuments and reference ties which is sufficient in detail to enable accurate relocation of the corner monument if the corner monument is disturbed. Indicate north.



(e) Describe any material discrepancy between the location of the corner as restored or reestablished and the location of that corner as previously restored or reestablished by distance and direction. Show the discrepancy on the plan view drawing under (d), above. Show the distances between the corner as previously restored or reestablished and (1) the corner as restored or reestablished, and (2) to at least 2 of the witness monuments shown on the drawing in (d), above.

None

(f) Was the corner restored through acceptance of (1) an obliterated evidence location, or, (2) a found perpetuated location?

(1) An Obliterated Evidence Location

(g&h) Was the corner reestablished through lost corner proportionate methods? If so, show the method, including the directions and distances to other public land survey corners used as evidence or used for proportioning in determining the corner location?

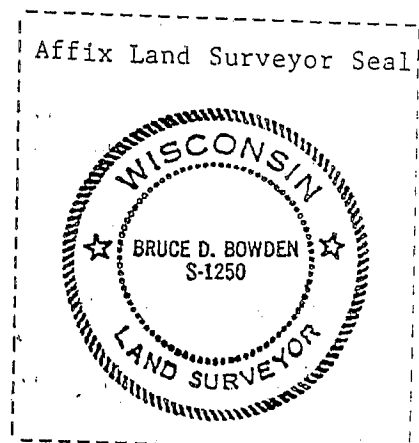
No.

(i) I, BRUCE D. BOWDEN,

(type or print name) certify that the corner location shown on this record was determined by me or under my direction and control and that this U.S. Public Land Survey Monument Record is correct and complete to the best of my knowledge and belief.

Signature

Date



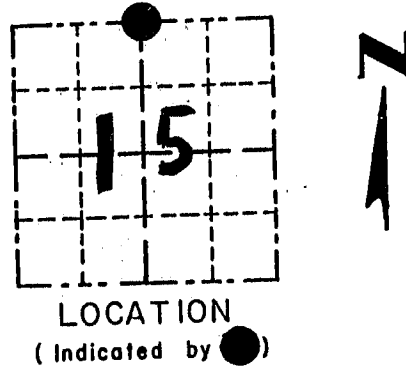
Bruce D. Bowden June 21, 1996

GRANT COUNTY

Survey Monument Record

TYPE OF MONUMENT PK NAIL SET
 STATE PLANE COORDINATES: N _____
 E _____
 ELEVATION — M.S.L. DATUM: _____
 THETA ANGLE: _____
 FIELD BOOK: _____
 PAGE _____

CORNER NO. 46
 SECTION 15
 TOWN 4N
 RANGE 5W
N 1/4 COR



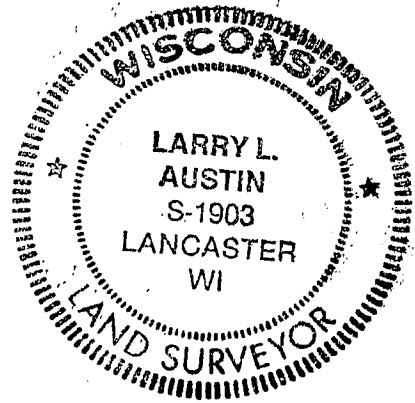
BASIS FOR MONUMENT LOCATION

(Use reverse side if necessary)

Show info such as: History of corner, with reference to Vol. and pg., dates, surveyor; exact description of monument replaced; if location computed, by taped or EDM traverse; landowner, remarks, etc.

SEAL:

NO RECORD OF CORNER SINCE ORIGINAL SURVEYS FOUND; CORNER WAS SHOWN D.O.T. R.O.W. PLAN PROJECT S 0200(1) BUT NOT DIMENSIONED. PROPORTIONED MEASUREMENTS TO NE & NW CORNERS OF THE SECTION. I PLACED THE CORNER AT THE ♀ OF THE HWY. VERIFIED BY EDM TRAVERSE OF THE AREA.



CERTIFIED CORRECT

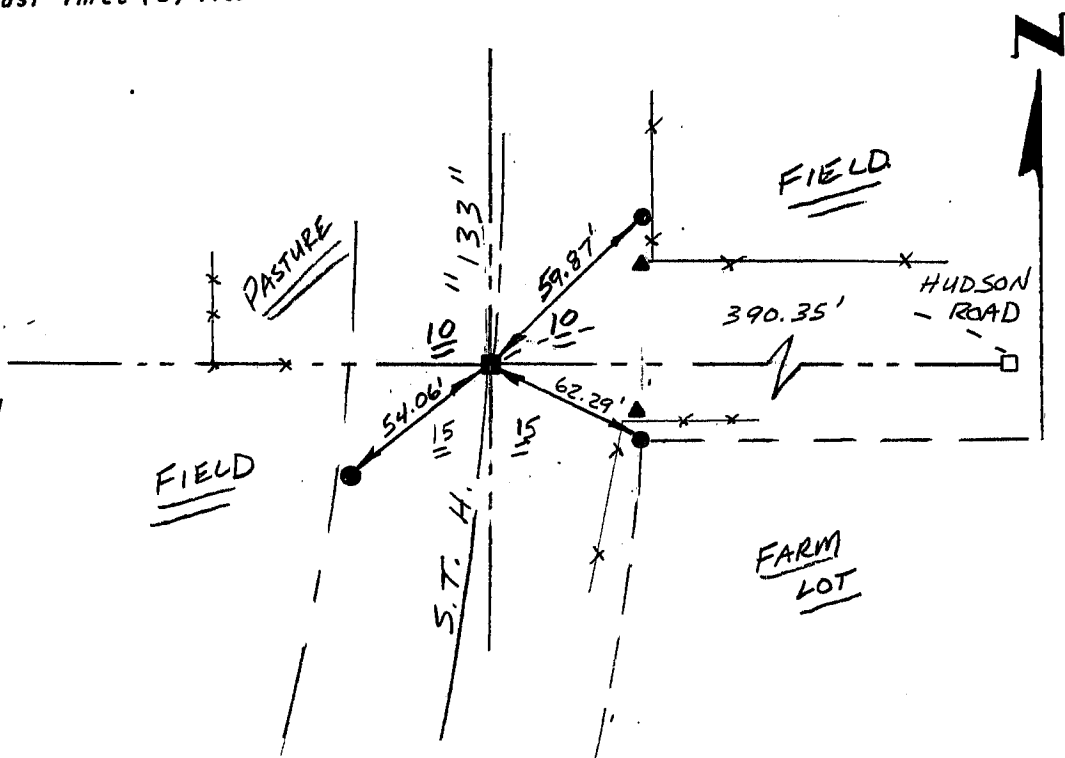
Larry L. Austin
 Registered Land Surveyor
 DATE: 1-15-95

TIE SKETCH

Show at least three (3) ties and monument

LEGEND

- P.K. NAIL SET
- 1" x 12" IRON PIPE SET
- 3/4" x 24" IRON BAR SET
- ▲ R.O.W. MARKER



NO SCALE