

U.S. PUBLIC LAND SURVEY MONUMENT RECORD - GRANT COUNTY, WI

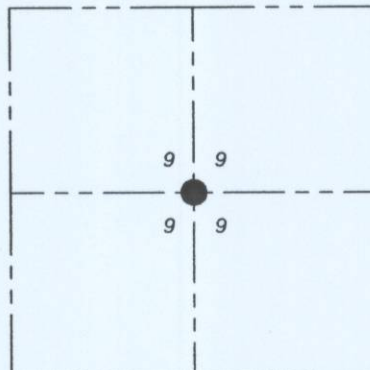
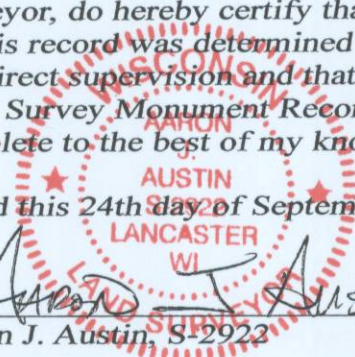
Section 9, Town 4 North Range 5 West, Town of Glen Haven

CERTIFICATE:

I, Aaron J. Austin, Wisconsin Professional Land Surveyor, do hereby certify that the corner location on this record was determined by me and/or under my direct supervision and that this U.S. Public Land Survey Monument Record is correct and complete to the best of my knowledge and belief.

Dated this 24th day of September, 2015.

Aaron J. Austin
 Aaron J. Austin, S-2922



● = CORNER LOCATION

HISTORY OF CORNER ESTABLISHMENT:

Corner was not set with Original Survey.
 2012-Aaron Austin set the corner on a Survey filed in Book 32, Page 33.

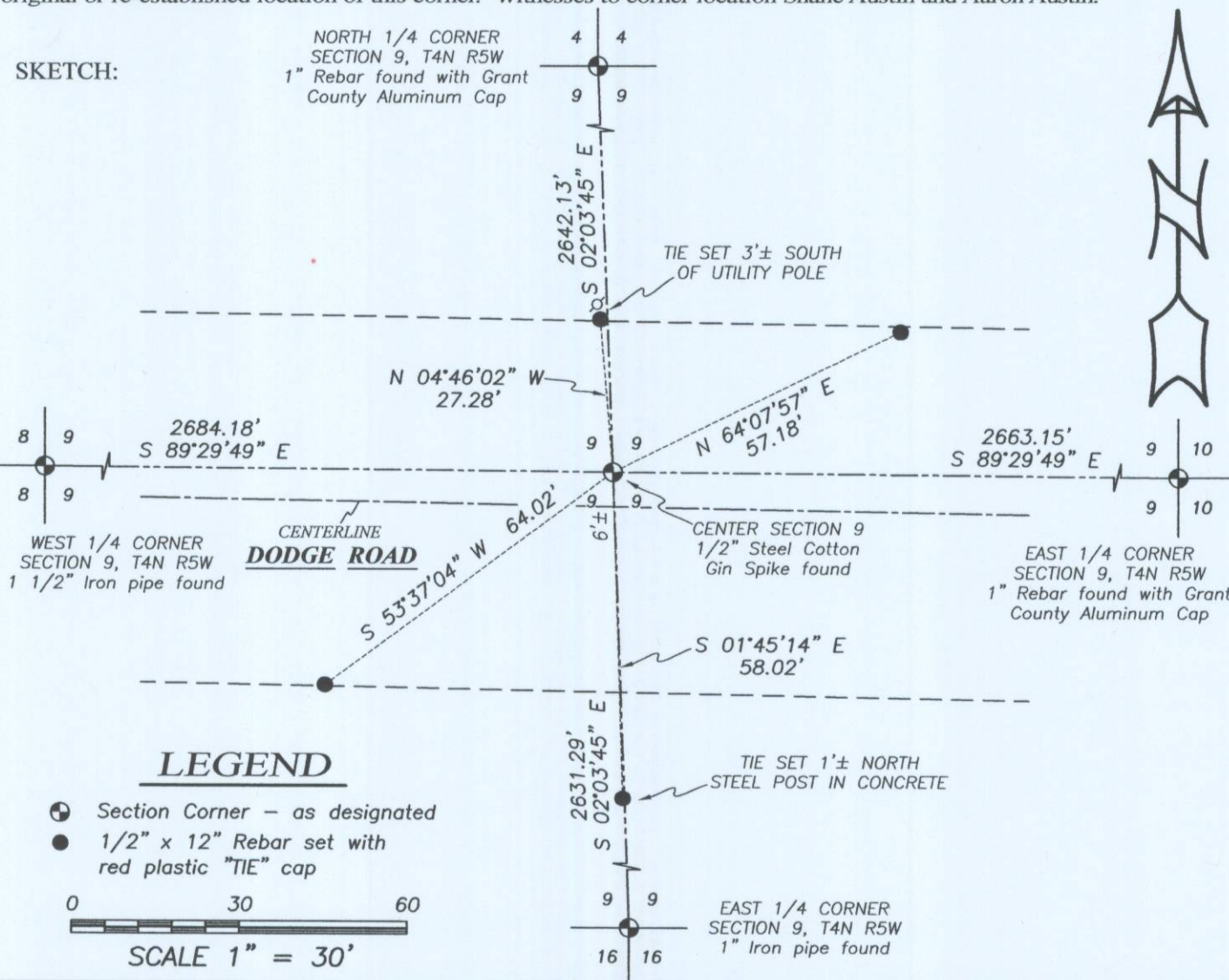
DESCRIPTION OF CORNER EVIDENCE FOUND:

I set the corner at the intersection of the East-West 1/4 line and the North-South 1/4 line of Section 9 on a Survey filed in Book 32, Page 33. I found and accepted the location of the Cotton Gin Spike and I set 4 witness corners after verifying this location with G.P.S. and E.D.M. methods.

DESCRIPTION OF CORNER AND WITNESS MONUMENTS, references and accessories used to perpetuate the original or re-established location of this corner. Witnesses to corner location Shane Austin and Aaron Austin.

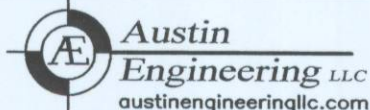
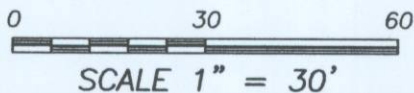
SKETCH:

NORTH 1/4 CORNER
 SECTION 9, T4N R5W
 1" Rebar found with Grant
 County Aluminum Cap



LEGEND

- ⊕ Section Corner - as designated
- 1/2" x 12" Rebar set with red plastic "TIE" cap



4211 HWY 81 E, LANCASTER, WI 53813
 PHONE: 608-723-6363 FAX: 608-723-6702

JOB NO: 15s197
 H:\CRD\15s197
 H:\TIE\T4NR5W\36.5

FIELDBOOK: TDSR
 DRAWN BY: AJ AUSTIN
 CREW: SW AUSTIN

