

U.S. PUBLIC LAND SURVEY MONUMENT RECORD

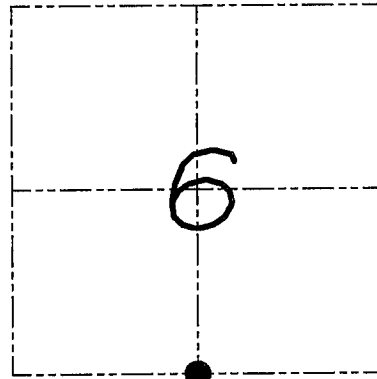
Section 6, Town 4 North Range 5 West, Township of
Glen Haven East, Grant County, Wisconsin

CERTIFICATE

I, Larry L. Austin, do hereby certify that the corner location on this record was determined by me and/or under my direct supervision and that this U.S. public land survey monument record is correct and complete to the best of my knowledge and belief.



Larry L. Austin 6.20.08
Larry L. Austin date



● = CORNER LOCATION

HISTORY OF CORNER

Corner was originally set in 1832 by Clark. In 1855 Overton tied to the corner with no mention of monument. No recent record of the corner was found.

CORNER EVIDENCE FOUND

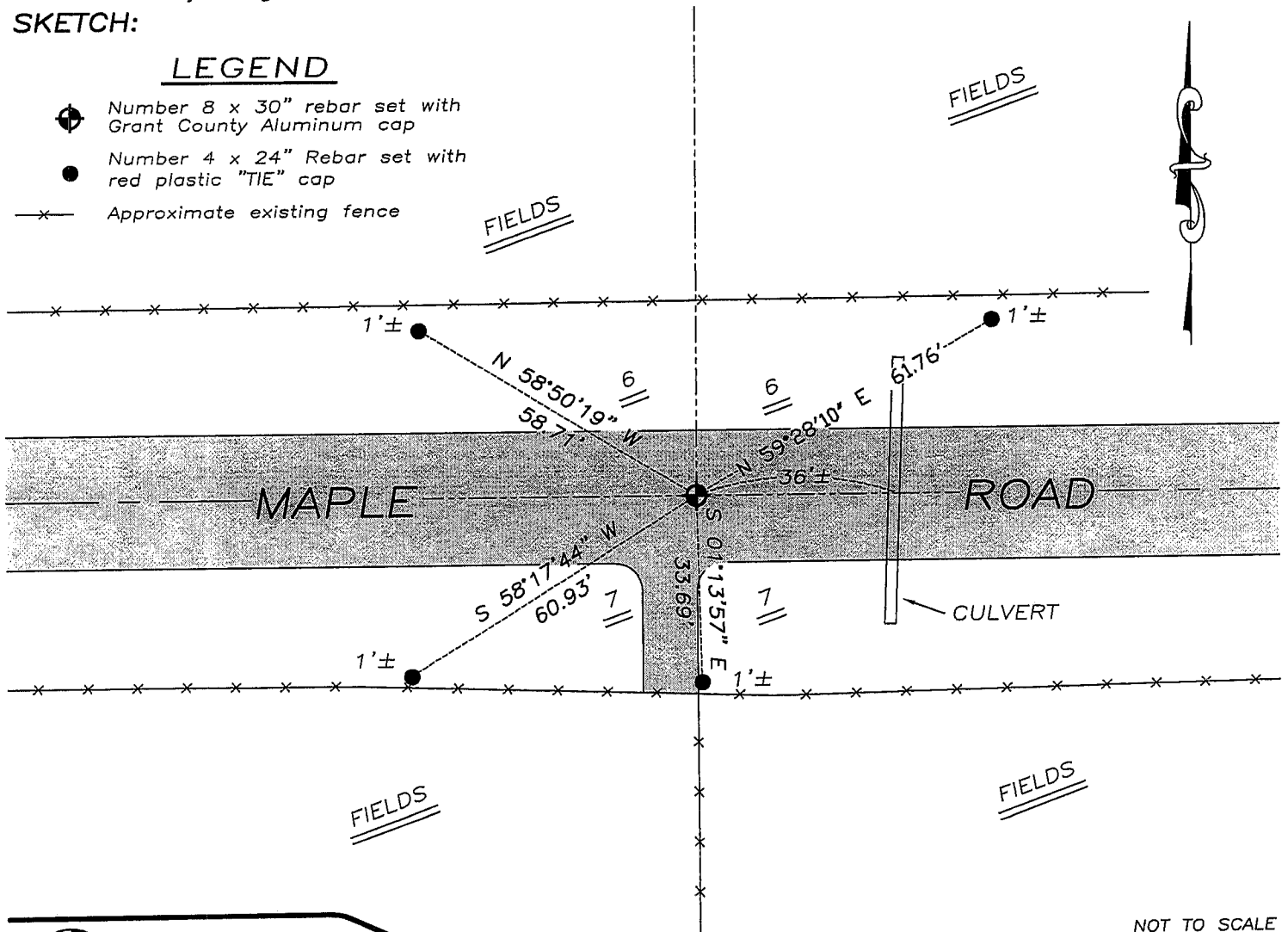
I found and accepted an occupied location after an EDM & GPS traverse of the area.

DESCRIPTION OF CORNER AND WITNESS MONUMENTS, references and accessories used to perpetuate the original or re-established location of this corner. Witnesses to monument location Bobby Sedgwick & Brad Digman & Brad Hazen

SKETCH:

LEGEND

- Number 8 x 30" rebar set with Grant County Aluminum cap
- Number 4 x 24" Rebar set with red plastic "TIE" cap
- x- Approximate existing fence



NOT TO SCALE



Austin
Engineering LLC

4211 HWY 81 E, LANCASTER, WI 53813
PHONE 608-723-6363 FAX 608-723-6702

JOB NUMBER 08S061
FIELDBOOK: TDSR, 2711
G:\T4NR5W\06
H:\TIE\T4NR5W\32

DRAWN BY: BL STANFLEY
APPROVED: LL AUSTIN

32