

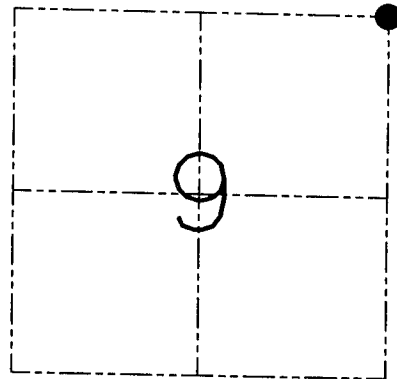
U.S. PUBLIC LAND SURVEY MONUMENT RECORD - GRANT COUNTY, WI
 Section 9, Town 4 North Range 5 West, Town of Bloomington

CERTIFICATE

I, Larry L. Austin, do hereby certify that the corner location on this record was determined by me and/or under my direct supervision and that this U.S. public land survey monument record is correct and complete to the best of my knowledge and belief.

Dated this 26th day of February, 2002

Larry L. Austin
 Larry L. Austin S-1903



● = CORNER LOCATION

HISTORY OF CORNER ESTABLISHMENT

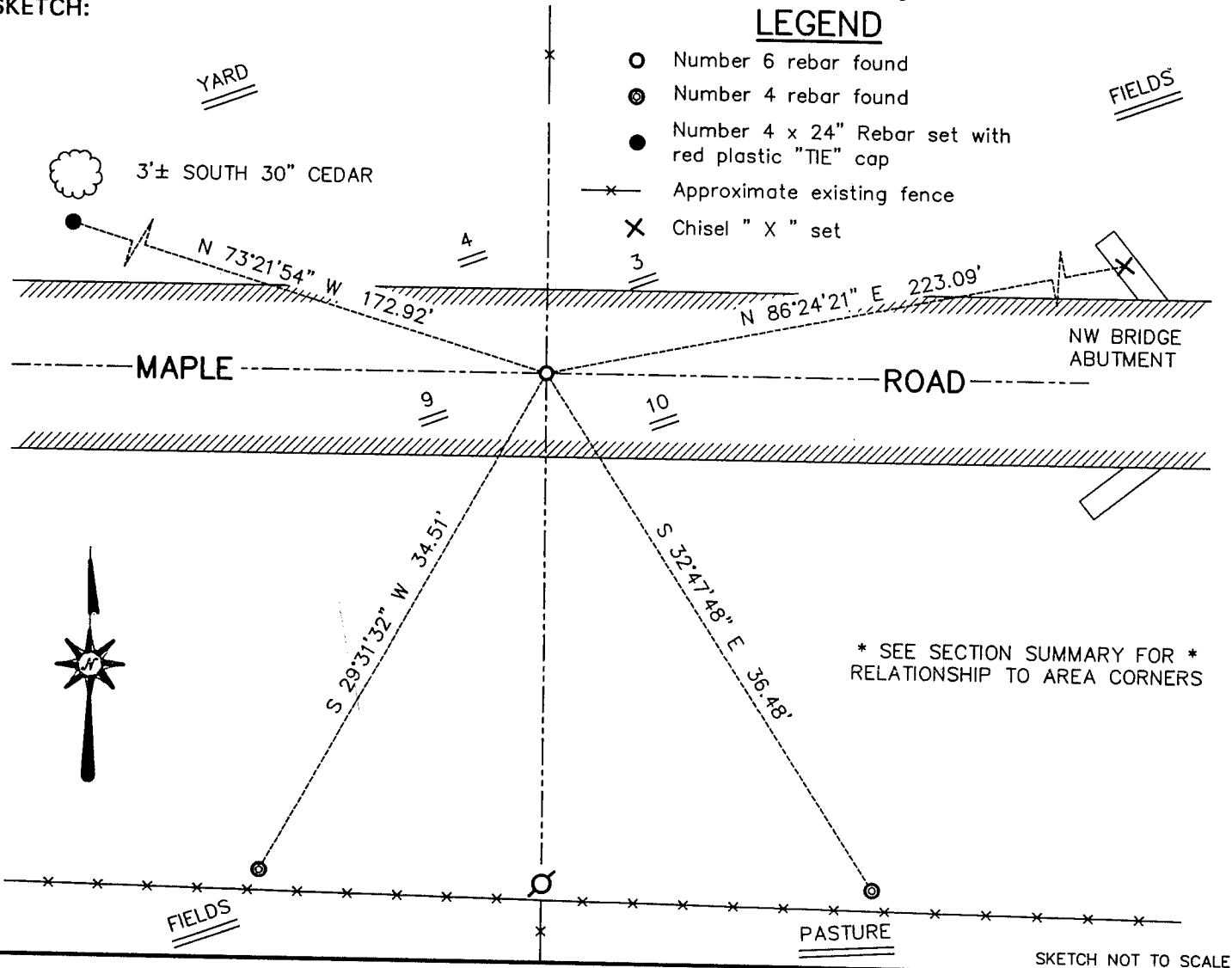
Corner was originally set in 1832 by Robert Clark.
 In 1999 I set a #6 iron bar at this location.

DESCRIPTION OF CORNER EVIDENCE FOUND

I found the #6 iron bar and accepted it's location after an EDM & GPS traverse of the area.

DESCRIPTION OF CORNER AND WITNESS MONUMENTS, references and accessories used to perpetuate the original or re-established location of this corner. Witnesses to the corner location Bobby Sedgwick & Shelby Blindert & Brad Digman

SKETCH:



* SEE SECTION SUMMARY FOR *
 RELATIONSHIP TO AREA CORNERS

SKETCH NOT TO SCALE

AUSTIN ENGINEERING, LLC
 4211 HWY 81 EAST, LANCASTER, WI 53813
 PHONE 608-723-6363 FAX 608-723-6702

FIELDBOOK: SDR33, 2130
 G: \T4NR5W\21
 C: \SWA\TIE\T4NR5W\27
 CREW: BS-SB-SA-BD

DRAWN BY: SW AUSTIN
 APPROVED: LL AUSTIN

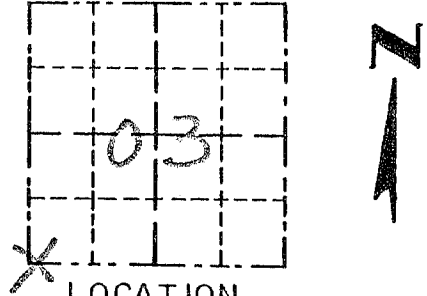
CORNER NUMBER 27

Survey Monument Record

TYPE OF MONUMENT 3/4" X 24" IRON
BAR SET

CORNER NO. 27
SECTION 3
TOWN 4N
RANGE 5W

FIELD BOOK: 97-20
PAGE _____



BASIS FOR MONUMENT LOCATION

(Use reverse side if necessary)

Show info such as: History of corner, with reference to Vol. and pg., dates, surveyor; exact description of monument replaced; if location computed, by taped or EDM traverse; landowner, remarks, etc.

SEAL:

CORNER SET IN 1832 BY ROBERT CLARK. NO RECORD OF CORNER FOUND SINCE ORIGINAL SURVEY. CORNER WAS SET AT AN OCCUPIED LOCATION, NORTHING SET BY EAST / WEST ROAD. EASTING SET BY A FENCE NORTH / SOUTH. VERIFIED THIS LOCATION USING EDM METHODS.



CERTIFIED CORRECT

Larry L. Austin
Registered Land Surveyor

DATE: 12/31/97

TIE SKETCH

Show at least three (3) ties and monument

LEGEND

- ⊕ 3/4" X 24" IRON BARSET
- 1/2" X 15" IRON BARSET
- XX EXISTING FENCE

