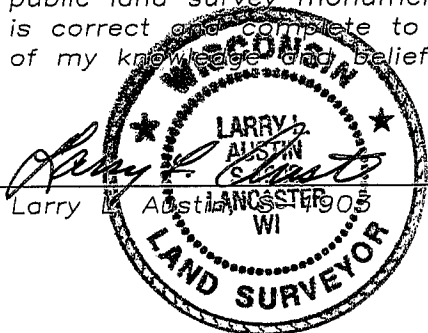


U.S. PUBLIC LAND SURVEY MONUMENT RECORD

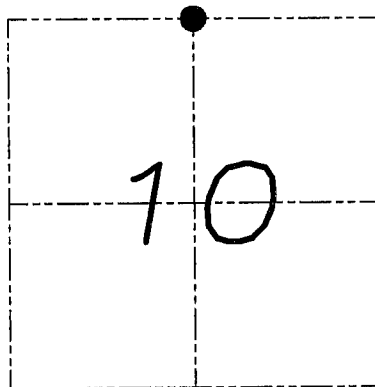
Section 10, Town 4 North Range 5 West, Town of Glen Haven, Grant County, Wisconsin

CERTIFICATE

I, Larry L. Austin, do hereby certify that the corner location on this record was determined by me and/or under my direct supervision and that this U.S. public land survey monument record is correct and complete to the best of my knowledge and belief.



10/29/08
date



● = CORNER LOCATION

HISTORY OF CORNER

Corner was originally set in 1832 by Clark. In 1997 I set and tied the corner. No other record of the corner was found.

CORNER EVIDENCE FOUND

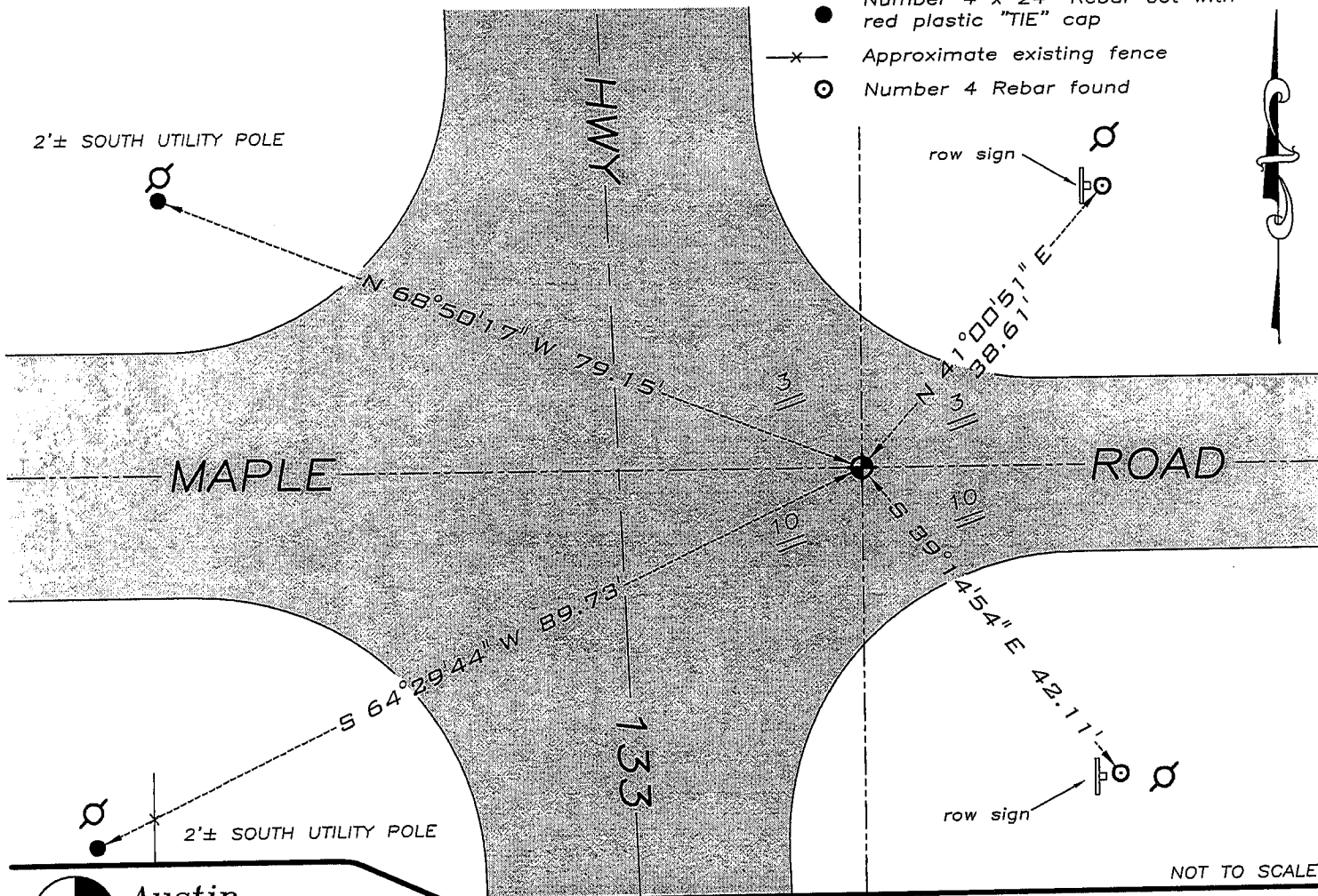
The monument and two ties were lost due to road construction. I reset the monument based on the two existing ties and set two new ones as shown below. Verified this location using EDM and GPS methods.

DESCRIPTION OF CORNER AND WITNESS MONUMENTS, references and accessories used to perpetuate the original or re-established location of this corner. Witnesses to monument location Bobby Sedgwick & Brad Digman & Shelby Blindert.

LEGEND

SKETCH:

- ⊕ Number 8 x 30" rebar set with Grant County Aluminum cap
- Number 4 x 24" Rebar set with red plastic "TIE" cap
- x- Approximate existing fence
- Number 4 Rebar found



NOT TO SCALE



Austin Engineering LLC

4211 HWY 81 E, LANCASTER, WI 53813
PHONE 608-723-6363 FAX 608-723-6702

JOB NUMBER 08S176-MYERS
FIELDBOOK: TDSR, 2708
G:\T4NR5W\21
H:\TIE\T4NR5W\26

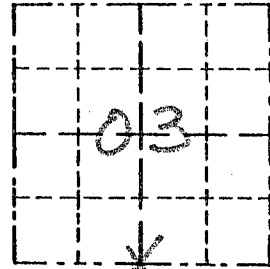
DRAWN BY: SW AUSTIN
APPROVED: LL AUSTIN

Survey Monument Record

TYPE OF MONUMENT P.K. NAIL
SET

CORNER NO. 26
 SECTION 3
 TOWN 4N
 RANGE 5W

FIELD BOOK: 97-20
 PAGE _____



LOCATION
 (Indicated by "X")

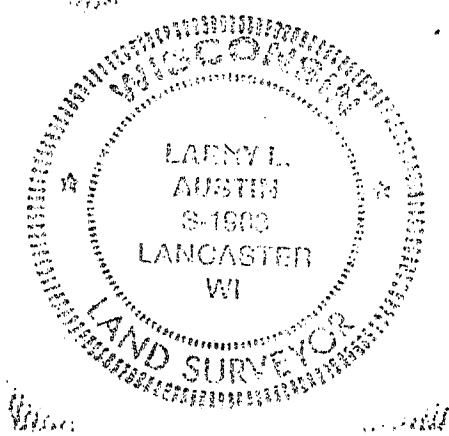
BASIS FOR MONUMENT LOCATION

(Use reverse side if necessary)

Show info such as: History of corner, with reference to Vol. and pg., dates, surveyor; exact description of monument, replaced; if location computed, by taped or EDM traverse; landowner, remarks, etc.

CORNER SET IN 1832 BY ROBERT CLARK. NO RECORD OF CORNER FOUND SINCE ORIGINAL SURVEY; CORNER WAS BASED ON HIGHWAY PROJECT # SO200 (1). VERIFIED ITS LOCATION 1/2 MILE EAST AND WEST, USING EDM METHODS.

SEAL:



CERTIFIED CORRECT

Larry L. Austin
 Registered Land Surveyor

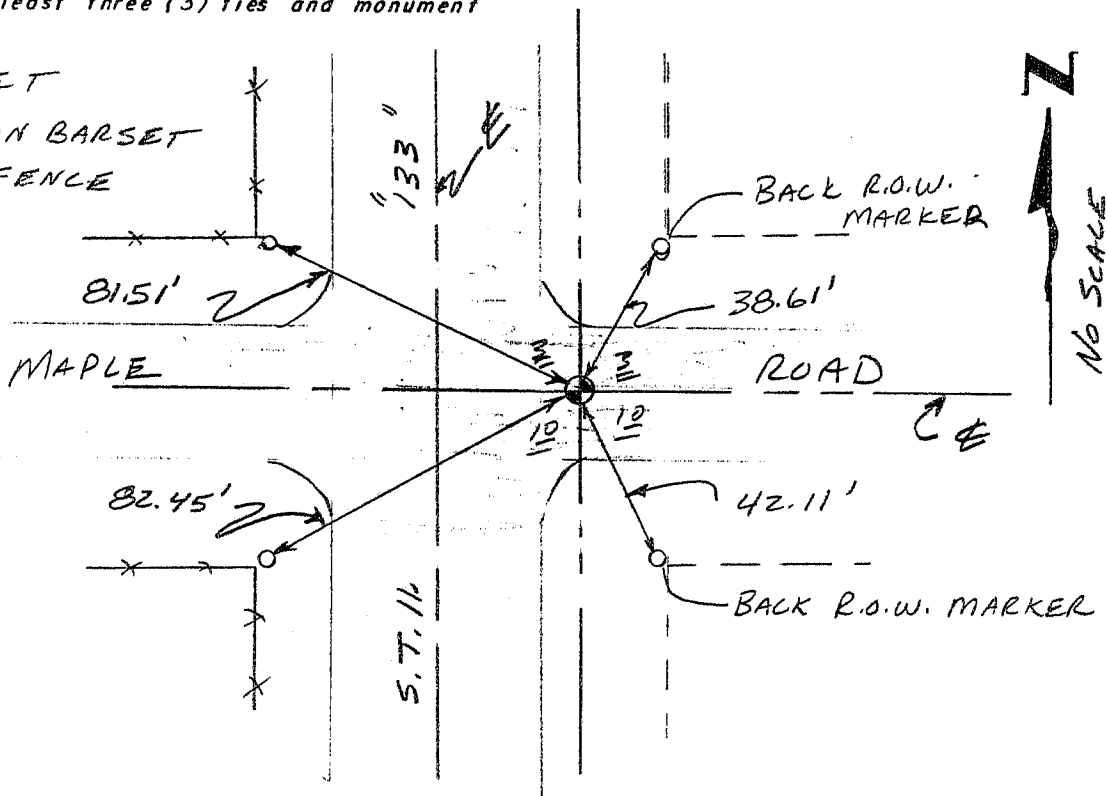
DATE: 12/31/97

TIE SKETCH

Show at least three (3) ties and monument

LEGEND

- ⊙ P.K. NAIL SET
- 1/2" x 15" IRON BAR SET
- XX EXISTING FENCE



No SCALE