

U.S. PUBLIC LAND SURVEY MONUMENT RECORD - GRANT COUNTY, WI

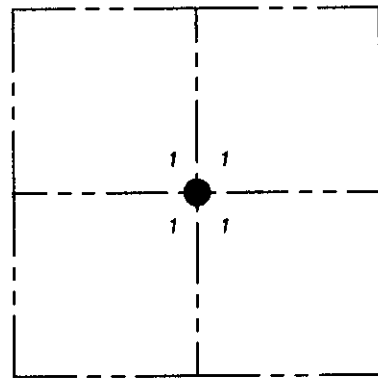
Section 1, Town 4 North Range 5 West, Town of Beetown

CERTIFICATE:

I, Aaron J. Austin, Wisconsin Professional Land Surveyor, do hereby certify that the corner location on this record was determined by me and/or under my direct supervision and that this U.S. Public Land Survey Monument Record is correct and complete to the best of my knowledge and belief.

Dated this 9th day of June, 2015

Aaron J. Austin
 Aaron J. Austin, S-2922
 LAND SURVEYOR



● = CORNER LOCATION

HISTORY OF CORNER ESTABLISHMENT:

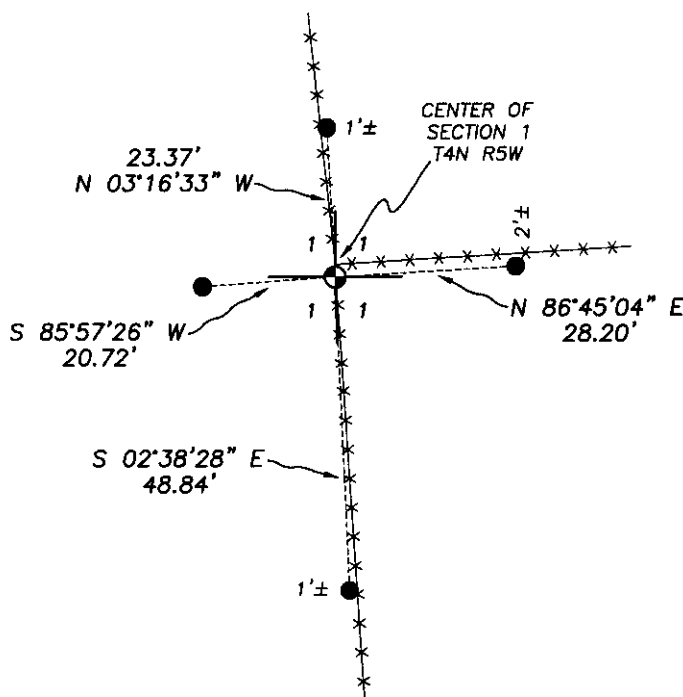
- 1854-John Clark set the corner on a Survey filed in Book C, Page 60.
- 1992-Matthew Janiak reset the corner on C.S.M. No. 325.
- 1992-Sean Walsh prepared a Government Corner Record for this corner.
- 2002-Larry Austin tied to the corner on C.S.M. No. 935.
- 2004-Larry Austin tied to the corner on C.S.M. No. 1041.
- 2005-Larry Austin tied to the corner on a Survey in Book 18, Page 43.

DESCRIPTION OF CORNER EVIDENCE FOUND:

I found the No. 6 rebar in place and verified this location with G.P.S. methods. I set 4 new witness corners as shown hereon.

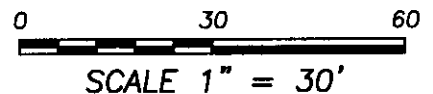
DESCRIPTION OF CORNER AND WITNESS MONUMENTS, references and accessories used to perpetuate the original or re-established location of this corner. Witnesses to corner location Shane Austin.

SKETCH:



LEGEND

- ⊕ 3/4" rebar found
- 1/2" x 12" Rebar set with red plastic "TIE" cap
- x-x- Approximate existing fence



Austin Engineering LLC
 austinengineeringllc.com
 4211 HWY 81 E, LANCASTER, WI 53813
 PHONE: 608-723-6363 FAX: 608-723-6702

JOB NO: 15S062
 H:\CRD\15S062
 H:\TIE\T4NR5W\19.5

FIELDBOOK: TDSR
 DRAWN BY: AJ AUSTIN
 CREW: SW AUSTIN

SEP 3 1992

GOVERNMENT CORNER RECORD

CENTER 1/4 CORNER, SECTION 1, TOWNSHIP 4 NORTH, RANGE 5 EAST - WEST,

TOWN, CITY OR VILLAGE OF BEETOWN

TYPE OF MONUMENT: 3/4" X 24" IRON ROD SET ELEVATION - M.S.L. DATUM

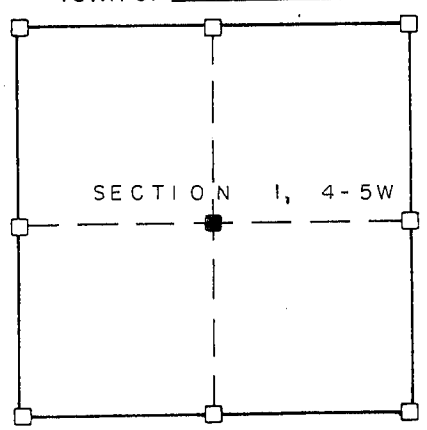
WITNESSES TO CORNER LOCATION

SEAN M. WALSH

MATTHEW J. JANIAK

SECTION 1, T. 4 N, R. 5 W

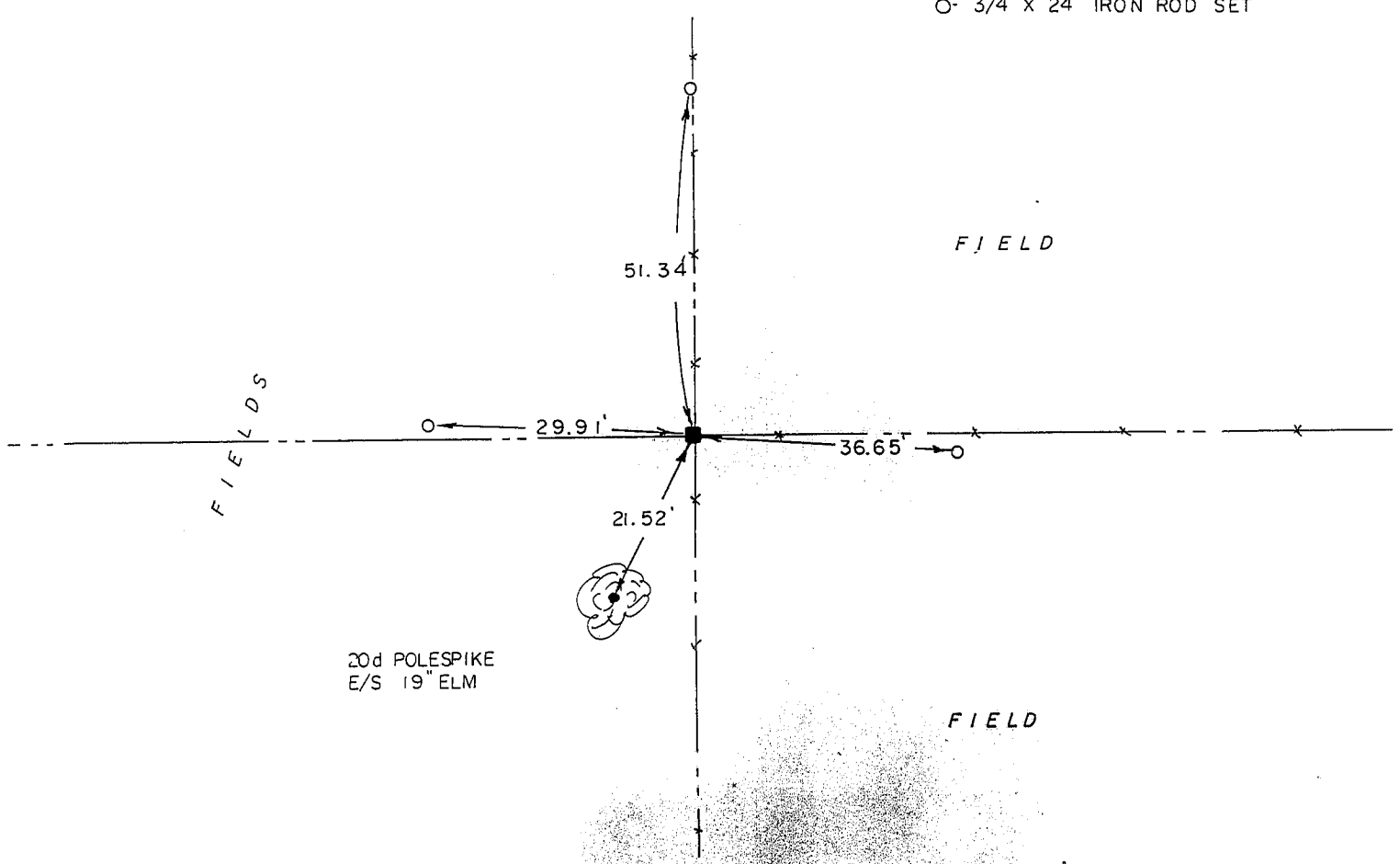
TOWN OF BEETOWN



■ - CORNER LOCATION
○ - 3/4" X 24" IRON ROD SET



TIE SKETCH
(SHOW ALL HELPFUL FEATURES)



SURVEYOR'S CERTIFICATE

SEAL S. 2016

Sean M. Walsh, DO HEREBY CERTIFY THAT I have established the above
 the above corner in accordance with the information contained hereon and
 that this information is correct and true to the best of my information,
 knowledge and belief. I accepted this occupied location as there was
 no other available evidence and no remaining evidence of the stake
 recorded to have been set by John Clark on May 10, 1854.



FILED THIS 9TH DAY OF JUNE, 1992

Sean M. Walsh
 REGISTERED LAND SURVEYOR

195 B