

U.S. PUBLIC LAND SURVEY MONUMENT RECORD - GRANT COUNTY, WI

Section 36, Town 4 North Range 4 West, Town of Beetown

CERTIFICATE:

I, Aaron J. Austin, do hereby certify that the corner location on this record was determined by me and/or under my direct supervision and that this U.S. Public Land Survey Monument Record is correct and complete to the best of my knowledge and belief.

Dated this 20th day of December, 2013.

Aaron J. Austin
 Aaron J. Austin, S-2922



● = CORNER LOCATION

HISTORY OF CORNER ESTABLISHMENT:

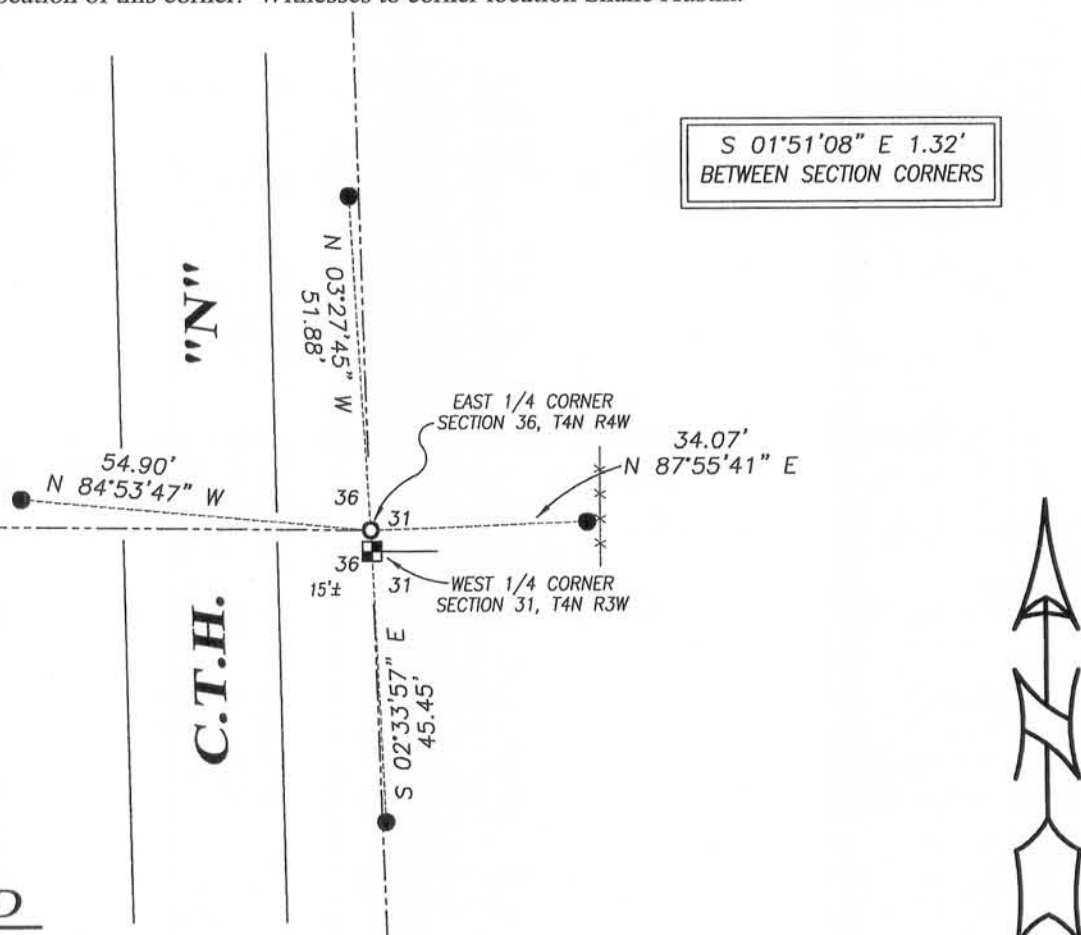
- 1832-Sibley set original corner
- 1877-Barber found original corner, Book D, Page 8.
- 1996-L. Austin set a No. 6 rebar on a Survey, Book 2, Page 45
- 1997-L. Austin tied to this corner on a Survey, Book 2, Page 46
- 1998-L. Austin prepared a Survey Monument record for this corner.

DESCRIPTION OF CORNER EVIDENCE FOUND:

I found the No. 6 rebar set by Larry Austin per previous Survey Monument Record. I could not recover any ties for this corner. I set 4 new ties for this corner and verified this location by E.D.M. and G.P.S. methods.

DESCRIPTION OF CORNER AND WITNESS MONUMENTS, references and accessories used to perpetuate the original or re-established location of this corner. Witnesses to corner location Shane Austin.

SKETCH:



LEGEND

- Aluminum Monument found with Grant County Aluminum Cap
- Number 4 x 12" Rebar set with red plastic "TIE" cap
- No. 6 rebar found



4211 HWY 81 E, LANCASTER, WI 53813
 PHONE: 608-723-6363 FAX: 608-723-6702

JOB NO: 13s187
 G:\13s187
 H:\TIE\T4NR4W\120B

FIELDBOOK: TDSR
 DRAWN BY: AJ AUSTIN
 CREW: SW AUSTIN

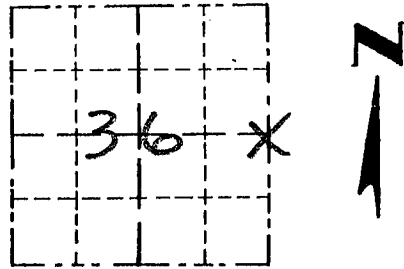
120B

Survey Monument Record

TYPE OF MONUMENT 3/4" X 24" IRON
BAR SET

CORNER NO. 120
SECTION 36
TOWN 34N
RANGE 4W

FIELD BOOK: 96-19
PAGE _____



LOCATION
(Indicated by "X")

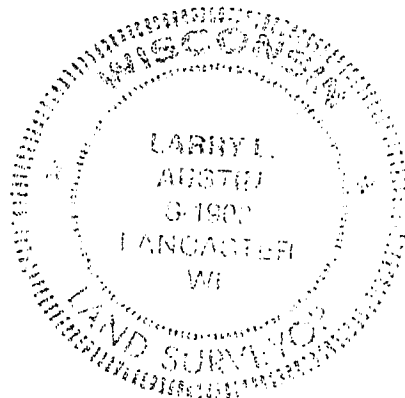
BASIS FOR MONUMENT LOCATION

(Use reverse side if necessary)

Show info such as: History of corner, with reference to Vol. and pg., dates, surveyor; exact description of monument replaced; if location computed, by taped or EDM traverse; landowner, remarks, etc.

SEAL:

CORNER SET IN 1832 BY SIBLEY. NO RECORD OF CORNER FOUND SINCE ORIGINAL SURVEYS. I SET THE CORNER AT 1/2 OF THE RECORDED OFFSET AT THE NW CORNER OF Sec 31 T4N, R3W; ACCEPTED THIS AS THE LOCATION AFTER EDM TRAVERSE OF THE AREA.



CERTIFIED CORRECT

Larry L. Austin
Registered Land Surveyor

DATE: 1/12/98

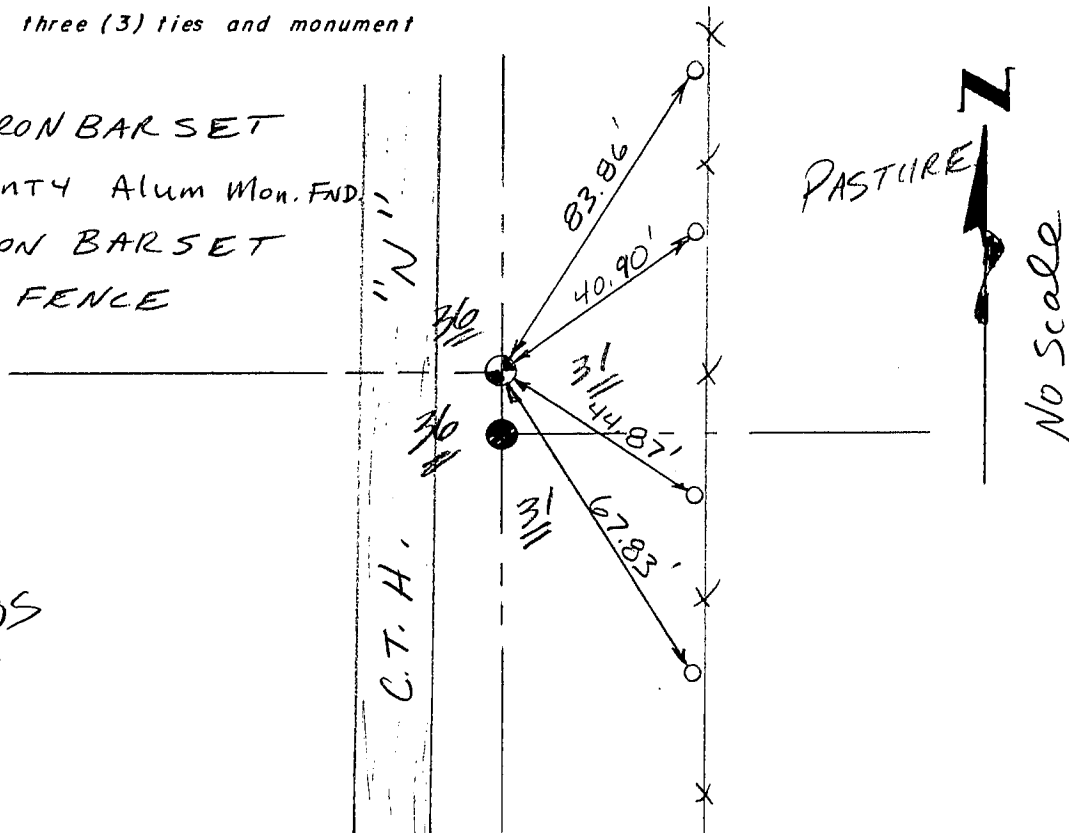
TIE SKETCH

Show at least three (3) ties and monument

LEGEND

- ⊕ 3/4" X 24" IRON BAR SET
- GRANT COUNTY Alum Mon. FND.
- 1/2" X 15" IRON BAR SET
- XX EXISTING FENCE

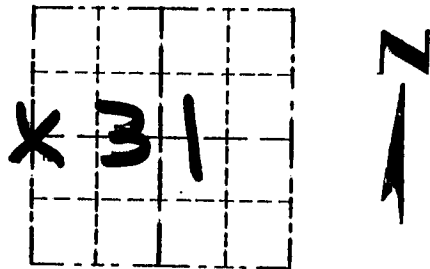
FIELDS



Survey Monument Record

CORNER NO. _____
 SECTION 31
 TOWN 4 N
 RANGE 3 W

TYPE OF MONUMENT GRANT County Mon. SET
 STATE PLANE COORDINATES: N (ALUM.)
 E _____
 ELEVATION — M.S.L. DATUM: _____
 THETA ANGLE: _____
 FIELD BOOK: 95-04
 PAGE _____

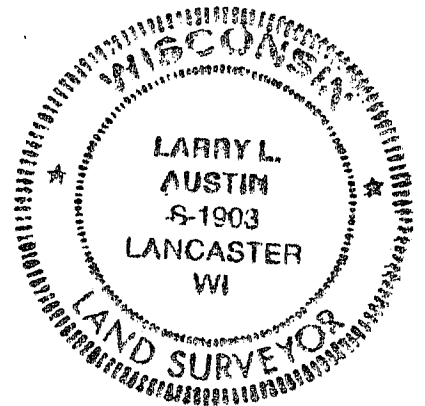


LOCATION
 (Indicated by "X")

BASIS FOR MONUMENT LOCATION

(Use reverse side if necessary)

CORNER ORIGINALLY SET IN 1832 BY SIBLEY; EXTERIOR BOUNDARIES OF THE SECTION RESURVEYED IN 1899 BY CHARLES SAMPTON. JOHN BUSER LOCATED THE CORNER IN 1931 AND REFERENCED IT TO CORNERS OF HURRICANE CEMETERY. I RE-ESTABLISHED IT BASED ON CORNERS OF CEMETERY. VERIFIED ITS LOCATION BY EDM TRAVERSE OF THE AREA.



CERTIFIED CORRECT

Larry L. Austin
 Registered Land Surveyor

DATE: 5/20/96

TIE SKETCH

Show at least three (3) ties and monument

