

U.S. PUBLIC LAND SURVEY MONUMENT RECORD – GRANT COUNTY, WI

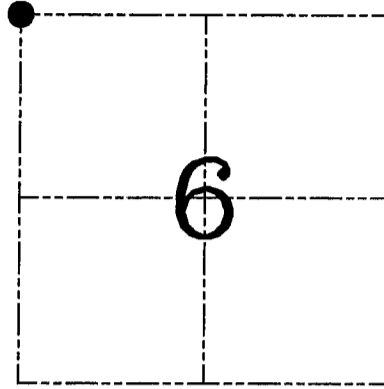
Section 6, Town 3 North Range 3 West, Town of Potosi

CERTIFICATE

I, Larry L. Austin, do hereby certify that the corner location on this record was determined by me and/or under my direct supervision and that this U.S. public land survey monument record is correct and complete to the best of my knowledge and belief.

Dated this 16th day of March, 2006

Larry L. Austin
Larry L. Austin S-1903



● = CORNER LOCATION

HISTORY OF CORNER ESTABLISHMENT

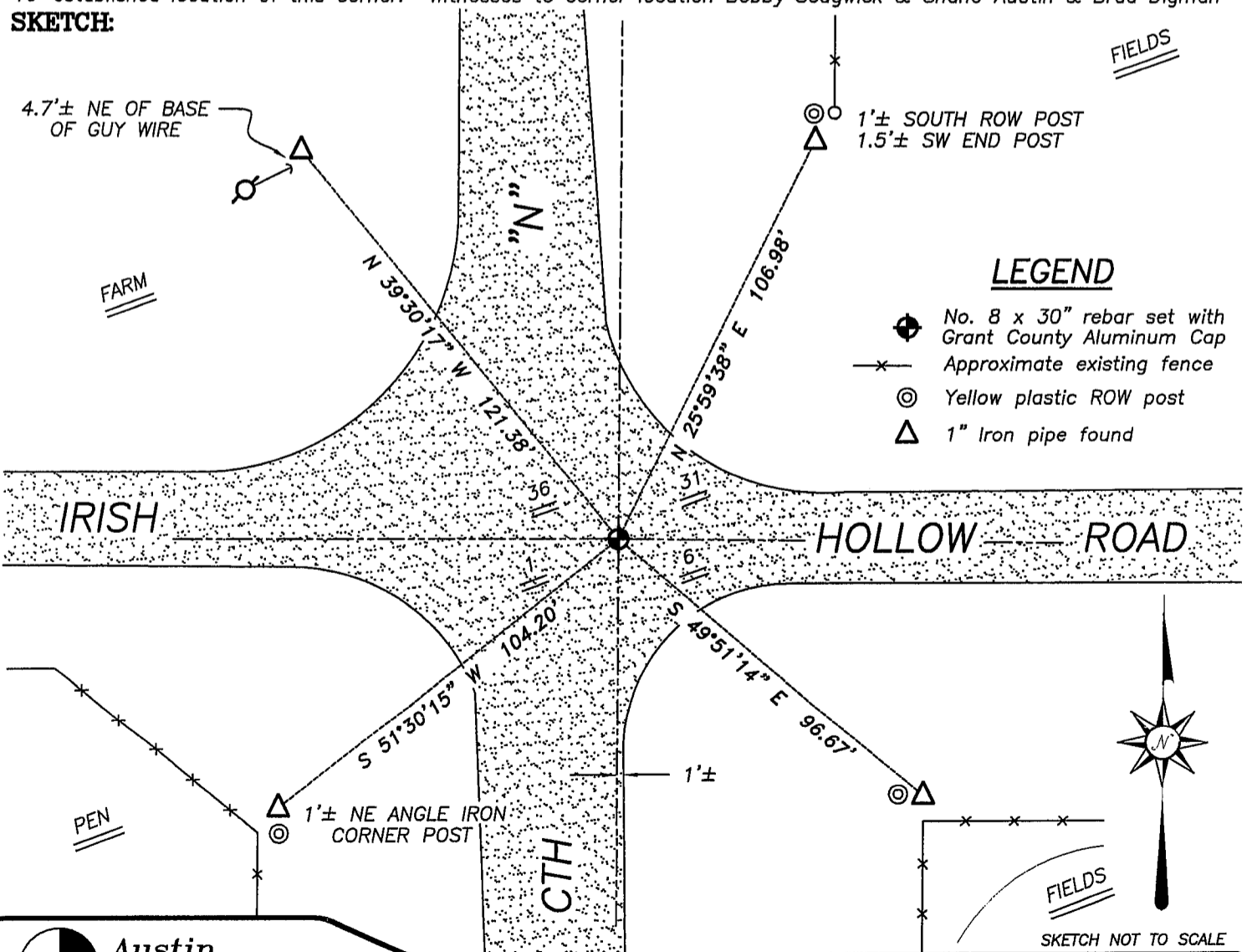
Corner was originally set in 1832 by Sibley. In 1876 Barber measured to the corner. In 1899 Sampson measured to the corner. In 1995 I set and tied the corner. No other record of the corner was found.

DESCRIPTION OF CORNER EVIDENCE FOUND

The monument was lost due to road construction. I reset the corner based on existing ties. Verified this location using EDM & GPS methods.

DESCRIPTION OF CORNER AND WITNESS MONUMENTS, references and accessories used to perpetuate the original or re-established location of this corner. Witnesses to corner location Bobby Sedgwick & Shane Austin & Brad Digman

SKETCH:



Austin Engineering LLC

JOB NUMBER 05S022
 FIELDBOOK: 2517, TDSR
 G:\T3NR3W\T3NR3W
 H:\TIE\T3NR3W\13

DRAWN BY: SW AUSTIN
 APPROVED: LL AUSTIN

4211 HWY 81 E, LANCASTER, WI 53813
 PHONE 608-723-6363 FAX 608-723-6702

Survey Monument Record

TYPE OF MONUMENT 3/4" x 24" IRON BAR SET

STATE PLANE COORDINATES: N _____
E _____

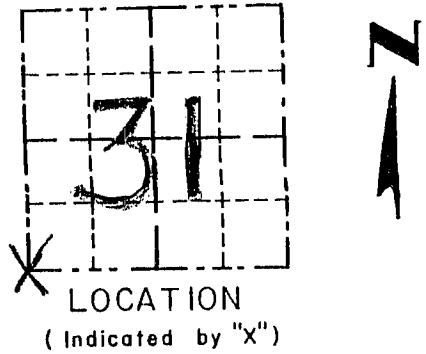
ELEVATION — M.S.L. DATUM: _____

THETA ANGLE: _____

FIELD BOOK: 95-01

PAGE 7

CORNER NO. 133
SECTION 31
TOWN 1 N
RANGE 3 W



BASIS FOR MONUMENT LOCATION

(Use reverse side if necessary)

Show info such as: History of corner, with reference to Vol. and pg., dates, surveyor; exact description of monument replaced; if location computed, by taped or EDM traverse; landowner, remarks, etc.

SEAL:

CORNER ORIGINALLY SET IN 1832 BY SIBLEY; THE EXTERIOR BOUNDARIES OF SECTION 31 WERE RESURVEYED IN 1899 BY CHARLES SAMPSON; CORNER WAS MEASURED TO IN 1876 BY JOEL BARBER SURVEY; I PROPORTIONED THE CORNER IN N-S & E-W & VERIFIED THIS LOCATION BY EDM TRAVERSE.

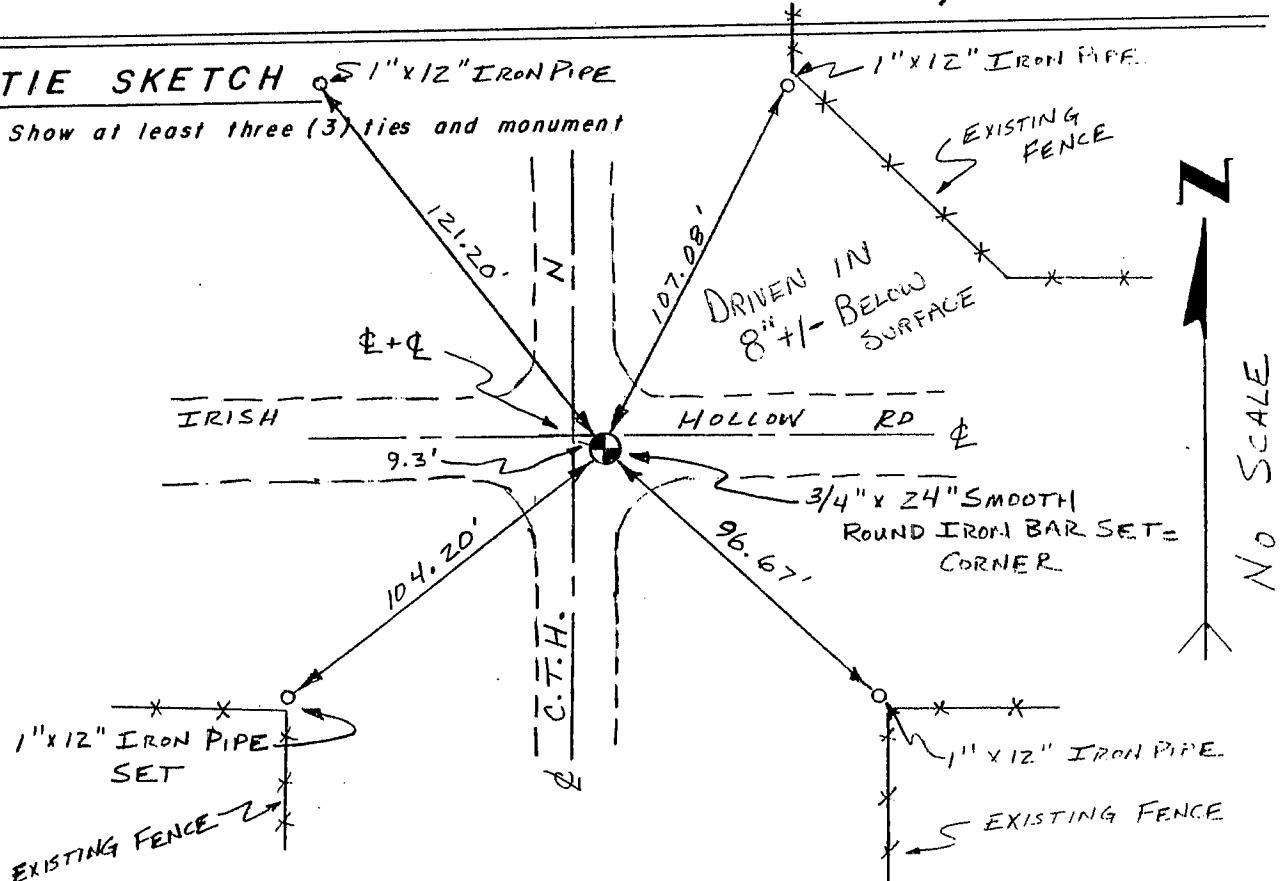
CERTIFIED CORRECT

Henry L. Quast
Registered Land Surveyor

DATE: 4/22/95

TIE SKETCH

Show at least three (3) ties and monument



NO SCALE