

U.S. PUBLIC LAND SURVEY MONUMENT RECORD - GRANT COUNTY, WI

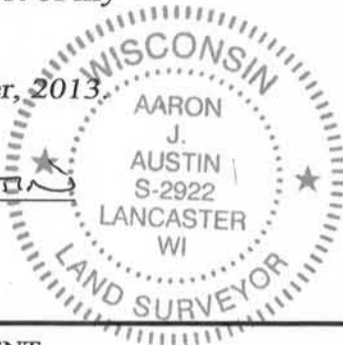
Section 36, Town 4 North Range 4 West, Town of Beetown

CERTIFICATE:

I, Aaron J. Austin, do hereby certify that the corner location on this record was determined by me and/or under my direct supervision and that this U.S. Public Land Survey Monument Record is correct and complete to the best of my knowledge and belief.

Dated this 20th day of December, 2013.

Aaron J. Austin
 Aaron J. Austin, S-2922



● = CORNER LOCATION

HISTORY OF CORNER ESTABLISHMENT:

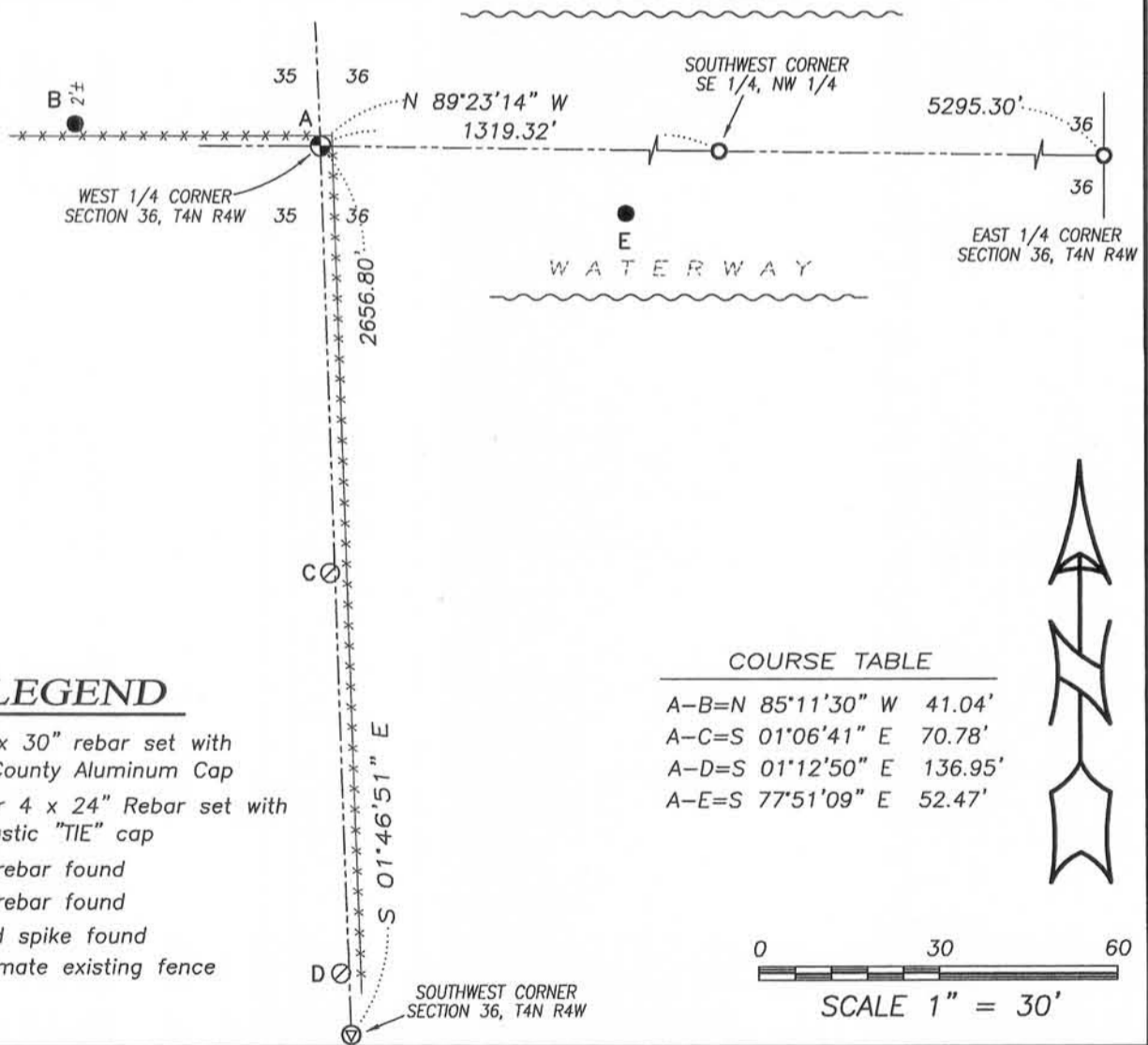
- 1832-Clark set original corner
- 1875-Barber found original corner, Book B, Page 538.
- 1877-Barber found original corner, Book D, Page 8.
- 1996-L. Austin set a No. 6 rebar on a Survey, Book 2, Page 45
- 1997-L. Austin tied to this corner on a Survey, Book 2, Page 46
- 1998-L. Austin prepared a Survey Monument record for this corner.

DESCRIPTION OF CORNER EVIDENCE FOUND:

I did not recover the No. 6 rebar set by Larry Austin. I did recover 2 of the 4 ties set by Larry Austin. These ties were in a near direct line South of the corner. Because of the location and the angle of the found ties from the corner, I decided to retrace this location using the Survey filed in Book, Page 46. I measured the No. 6 rebar at the East 1/4 corner of Section 36 and projected through a found rebar at the Southwest corner of the SE 1/4, NW 1/4. This location fit very well to the Southwest corner of Section 36, as shown on said survey. I set 2 new ties and verified this location by E.D.M. and G.P.S. methods.

DESCRIPTION OF CORNER AND WITNESS MONUMENTS, references and accessories used to perpetuate the original or re-established location of this corner. Witnesses to corner location Shane Austin.

SKETCH:

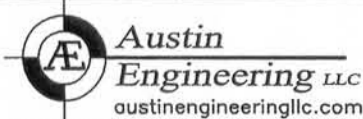
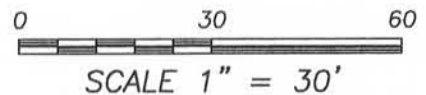


LEGEND

- No. 8 x 30" rebar set with Grant County Aluminum Cap
- Number 4 x 24" Rebar set with red plastic "TIE" cap
- No. 6 rebar found
- No. 4 rebar found
- ⊙ Railroad spike found
- x-x- Approximate existing fence

COURSE TABLE

A-B=N 85°11'30" W	41.04'
A-C=S 01°06'41" E	70.78'
A-D=S 01°12'50" E	136.95'
A-E=S 77°51'09" E	52.47'



4211 HWY 81 E, LANCASTER, WI 53813
 PHONE: 608-723-6363 FAX: 608-723-6702

JOB NO: 13s187
 G:\13s187
 H:\TIE\T4NR4W\119

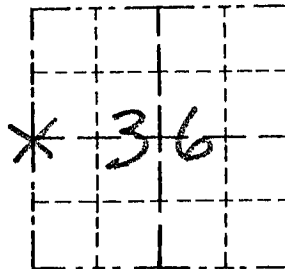
FIELDBOOK: TDSR
 DRAWN BY: AJ AUSTIN
 CREW: BS-SB

Survey Monument Record

TYPE OF MONUMENT 3/4" x 24" IRON
BAR SET

CORNER NO. 119
SECTION 36
TOWN 4N
RANGE 4W

FIELD BOOK: 96-20
PAGE 10



LOCATION
(Indicated by "X")

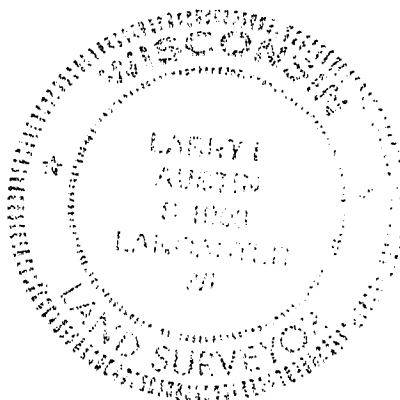
BASIS FOR MONUMENT LOCATION

(Use reverse side if necessary)

Show info such as: History of corner, with reference to Vol. and pg., dates, surveyor; exact description of monument replaced; if location computed, by taped or EDM traverse; landowner, remarks, etc.

CORNER SET IN 1833 BY ROBERT CLARK. IN 1875 JOEL BARBER FOUND THE ORIGINAL CORNER. I ACCEPTED THE FOUND OCCUPATIONAL EVIDENCE AS THE CORNER LOCATION, VERIFIED THIS LOCATION BY EDM TRAVERSE OF THE AREA.

SEAL:



CERTIFIED CORRECT

Gary S. Post
Registered Land Surveyor

DATE: 1-12-98

TIE SKETCH

Show at least three (3) ties and monument

LEGEND

- 3/4" x 24" IRON BAR SET
- 1/2" x 15" IRON BAR SET
- XX EXISTING FENCE

