

U.S. PUBLIC LAND SURVEY MONUMENT RECORD - GRANT COUNTY, WI

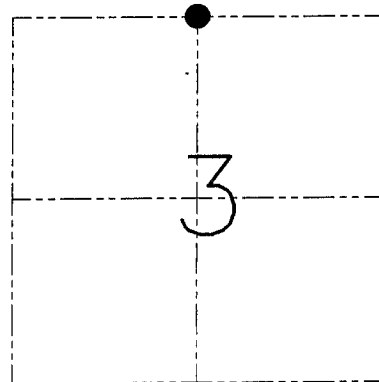
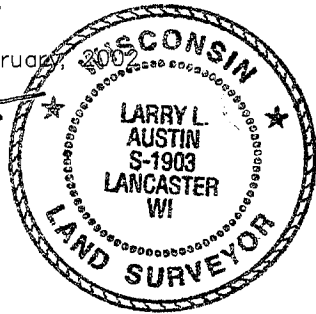
Section 3, Town 3 North Range 4 West, Town of Waterloo

CERTIFICATE

I, Larry L. Austin, do hereby certify that the corner location on this record was determined by me and/or under my direct supervision and that this U.S. public land survey monument record is correct and complete to the best of my knowledge and belief.

Dated this 26th day of February, 2007

Larry L. Austin
Larry L. Austin S-1903



● = CORNER LOCATION

HISTORY OF CORNER ESTABLISHMENT

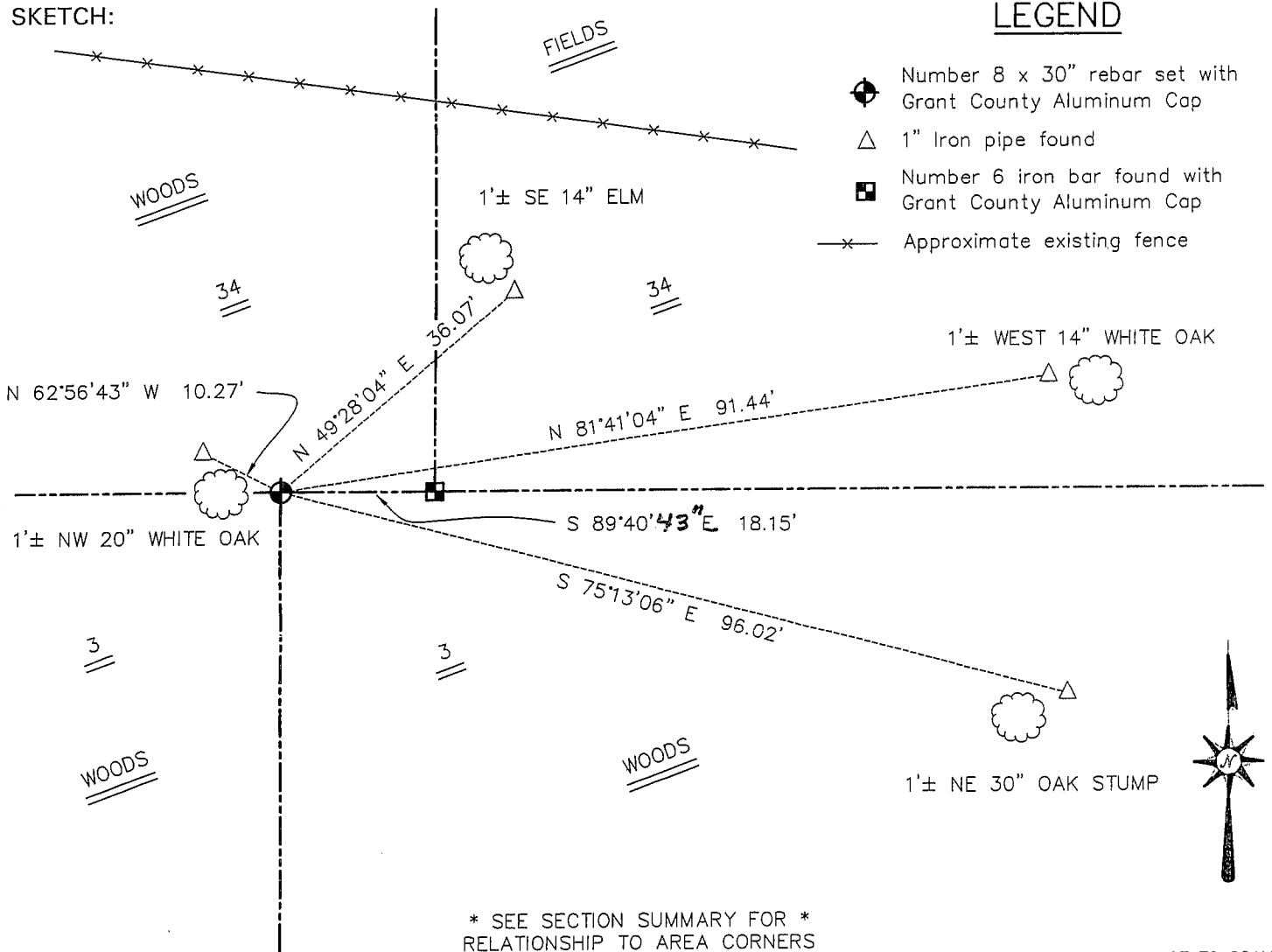
Corner was never originally set.

DESCRIPTION OF CORNER EVIDENCE FOUND

I reset the corner at the proportioned offset from the South 1/4 of Section 34. Verified this location using EDM & GPS methods.

DESCRIPTION OF CORNER AND WITNESS MONUMENTS, references and accessories used to perpetuate the original or re-established location of this corner. Witnesses to the corner location Bobby Sedgwick & Shane Austin & Shelby Blindert

SKETCH:



LEGEND

- Number 8 x 30" rebar set with Grant County Aluminum Cap
- △ 1" Iron pipe found
- Number 6 iron bar found with Grant County Aluminum Cap
- x— Approximate existing fence

* SEE SECTION SUMMARY FOR *
RELATIONSHIP TO AREA CORNERS

SKETCH NOT TO SCALE

AUSTIN ENGINEERING, LLC

4211 HWY 81 EAST, LANCASTER, WI 53813
PHONE 608-723-6363 FAX 608-723-6702

FIELDBOOK: SDR33, 2131
G: \T3NR4W\15A
C: \SWA\TIE\T3NR4W\06
CREW: BS-SB-SA-BD

DRAWN BY: SW AUSTIN
APPROVED: LL AUSTIN

CORNER NUMBER 06

GRANT COUNTY

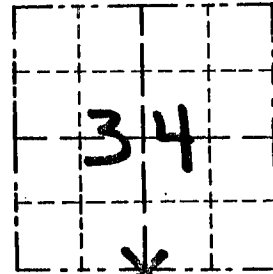
REC'D JAN 29 1996

Survey Monument Record

CORNER NO. 126
 SECTION 34
 TOWN 4N
 RANGE 4W

TYPE OF MONUMENT GRANT COUNTY MONUMENT
 STATE PLANE COORDINATES: N _____
 E _____

ELEVATION — M.S.L. DATUM: _____
 THETA ANGLE: _____
 FIELD BOOK: 95-10
 PAGE 21



LOCATION
 (Indicated by "X")

BASIS FOR MONUMENT LOCATION

(Use reverse side if necessary)

GRANT COUNTY MONUMENT
 SET EQUIDISTANT AND
 ON LINE BETWEEN THE
 SOUTHWEST CORNER AND
 THE SOUTHEAST CORNER
 OF SECTION 34 AND
 VERIFIED BY EDM TRAVERSE
 OF THE AREA.

SEAL:

CERTIFIED CORRECT

Perry J. Rust
 Registered Land Surveyor

DATE: 1-8-96

TIE SKETCH

Show at least three (3) ties and monument

