

GRANT COUNTY CERTIFIED LAND CORNER

CORNER NUMBER 130

CERTIFICATE:

I, Larry L. Austin, do hereby certify that on the 26th day of April, 2000, I found no evidence of the South 1/4 corner of Section 32, Town 4 North, Range 4 West, of the 4th Principal Meridian, and I re-established said corner according to the Wisconsin statutes as shown and described hereon.

Dated this 15th day of May, 2000

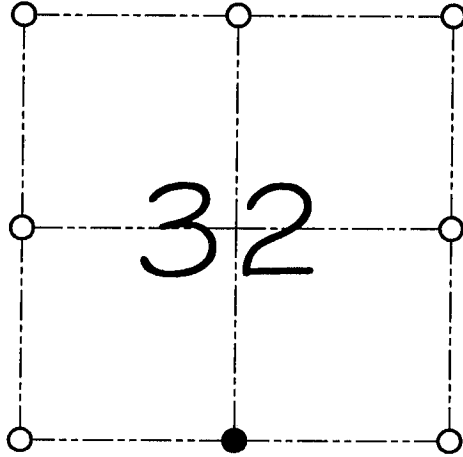
Larry L. Austin
Larry L. Austin 5-1903



Grant County Cor.

N 495550.6

E 776331.7



● = CORNER LOCATION

SOUTH 1/4 CORNER OF SECTION 32, T 4 N R 4 W TOWN OF BEETOWN

SEAL

HISTORY OF ORIGINAL CORNER ESTABLISHMENT:

Corner was original set in 1832 by Sibley.
No other record of the corner was found.

DESCRIPTION OF CORNER EVIDENCE FOUND:

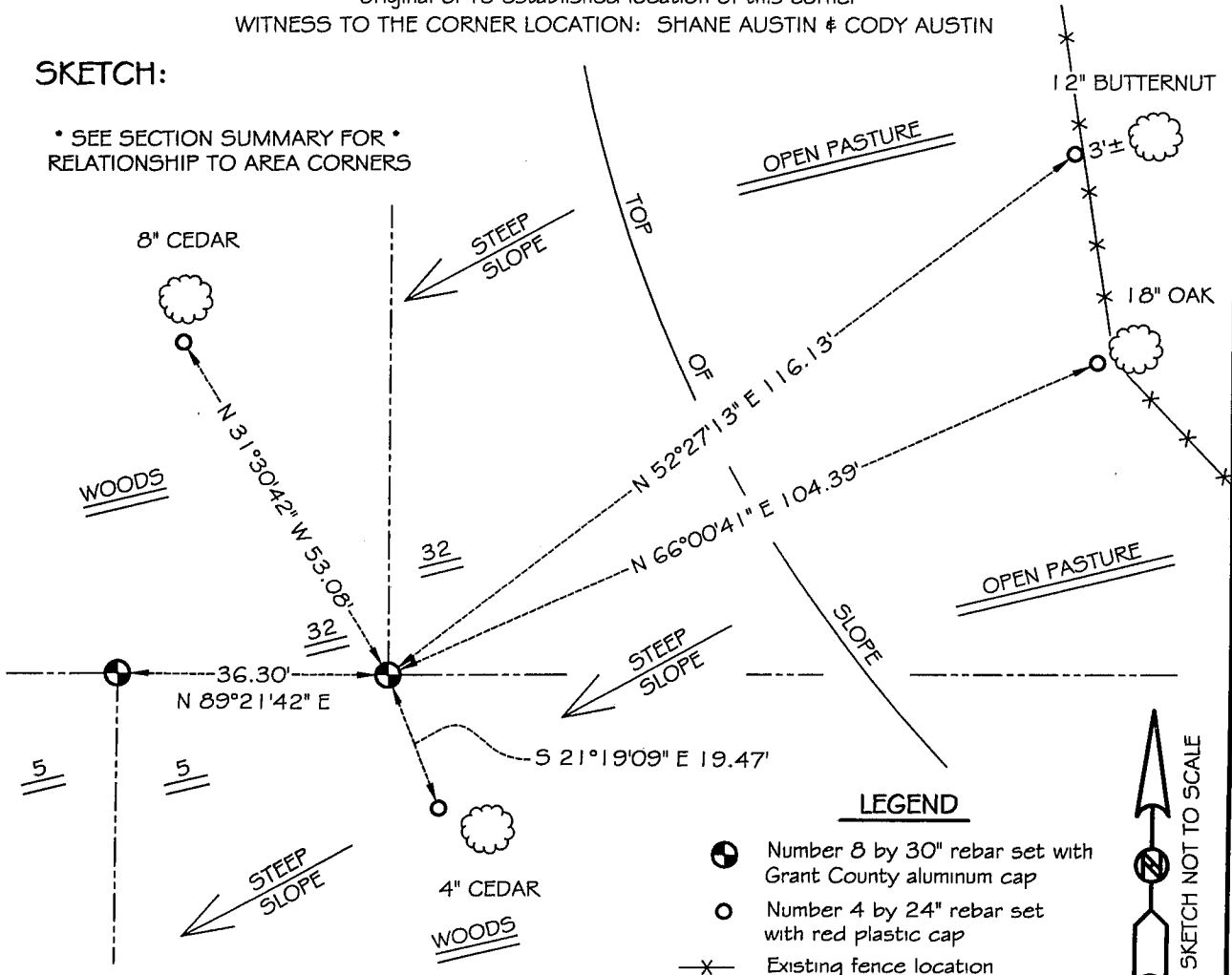
I reset the corner at a proportionate distance between the Southeast and Southwest corners of Section 32.
Verified this location using E.D.M. & G.P.S. methods.

DESCRIPTION OF CORNER AND WITNESS MONUMENTS, references and accessories used to perpetuate the original or re-established location of this corner

WITNESS TO THE CORNER LOCATION: SHANE AUSTIN & CODY AUSTIN

SKETCH:

• SEE SECTION SUMMARY FOR •
RELATIONSHIP TO AREA CORNERS



LEGEND

- Number 8 by 30" rebar set with Grant County aluminum cap
- Number 4 by 24" rebar set with red plastic cap
- x— Existing fence location

SKETCH NOT TO SCALE

GRANT COUNTY CERTIFIED LAND CORNER

CORNER NUMBER 10

CERTIFICATE:

I, Larry L. Austin, do hereby certify that on the 26th day of April, 2000, I found no evidence of the North 1/4 corner of Section 5, Town 3 North, Range 4 West, of the 4th Principal Meridian, and I re-established said corner according to the Wisconsin statutes as shown and described hereon.

Dated this 15th day of May, 2000

Larry L. Austin
Larry L. Austin S-1903

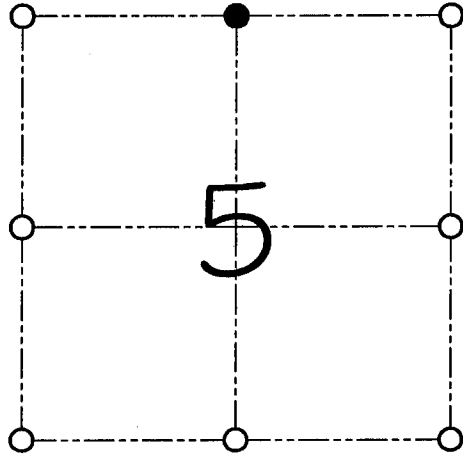
Grant County Coor.

N - 495551.02

E - 776295.45



SEAL



● = CORNER LOCATION

NORTH 1/4 CORNER OF SECTION 05, T 3 N R 4 W TOWN OF WATERLOO

HISTORY OF ORIGINAL CORNER ESTABLISHMENT:

Corner was never originally set.

DESCRIPTION OF CORNER EVIDENCE FOUND:

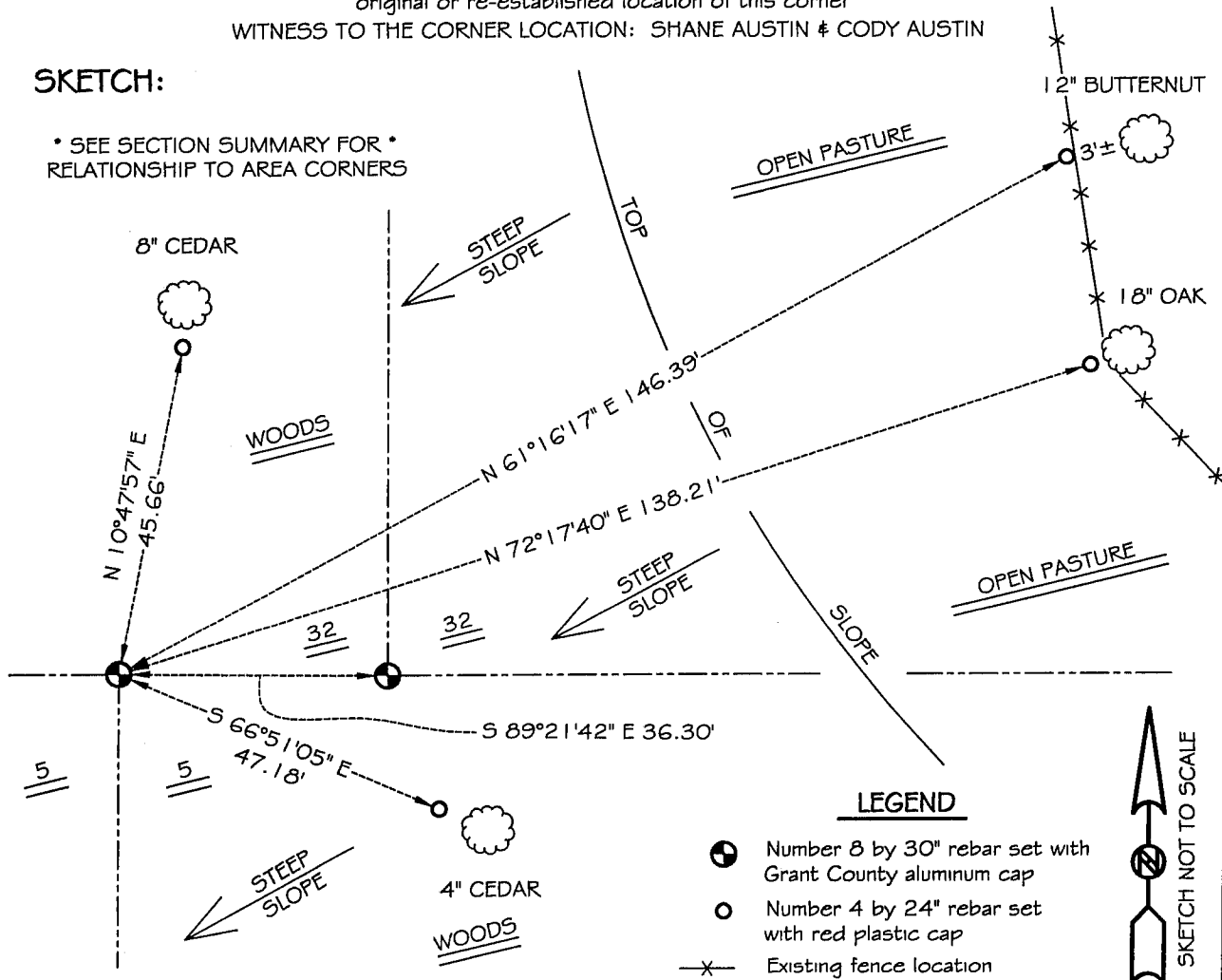
I set the corner at the proportioned offset from the South Quarter of Section 32. Verified this location using E.D.M. & G.P.S. methods.

DESCRIPTION OF CORNER AND WITNESS MONUMENTS, references and accessories used to perpetuate the original or re-established location of this corner

WITNESS TO THE CORNER LOCATION: SHANE AUSTIN & CODY AUSTIN

SKETCH:

• SEE SECTION SUMMARY FOR •
RELATIONSHIP TO AREA CORNERS



LEGEND

- Number 8 by 30" rebar set with Grant County aluminum cap
- Number 4 by 24" rebar set with red plastic cap
- ✕ Existing fence location



CASC145WATTET3NR4W10