

# GRANT COUNTY CERTIFIED LAND CORNER

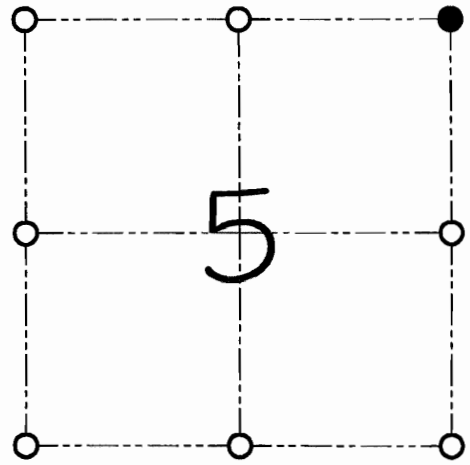
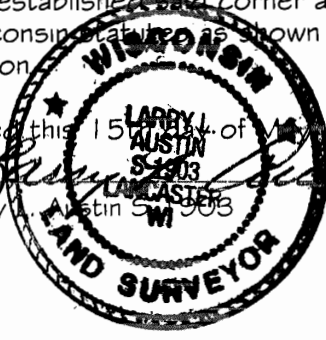
CORNER NUMBER 09

**CERTIFICATE:**

I, Larry L. Austin, do hereby certify that on the 26th day of April, 2000, I found evidence of the Northeast corner of Section 5, Town 3 North, Range 4 West, of the 4th Principal Meridian, and I re-established said corner according to the Wisconsin Statutes as shown and described hereon.

Dated this 15th day of May, 2000

*Larry L. Austin*  
Larry L. Austin  
4/30/09



● = CORNER LOCATION  
NORTHEAST CORNER OF SECTION 05, T 3 N R 4 W TOWN OF WATERLOO

COUNTY COORDINATES  
N=495521.89 E=778909.87

SEAL

**HISTORY OF ORIGINAL CORNER ESTABLISHMENT:**

Corner was originally set in 1833 by Lucius Lyon.  
No other record of the corner was found.

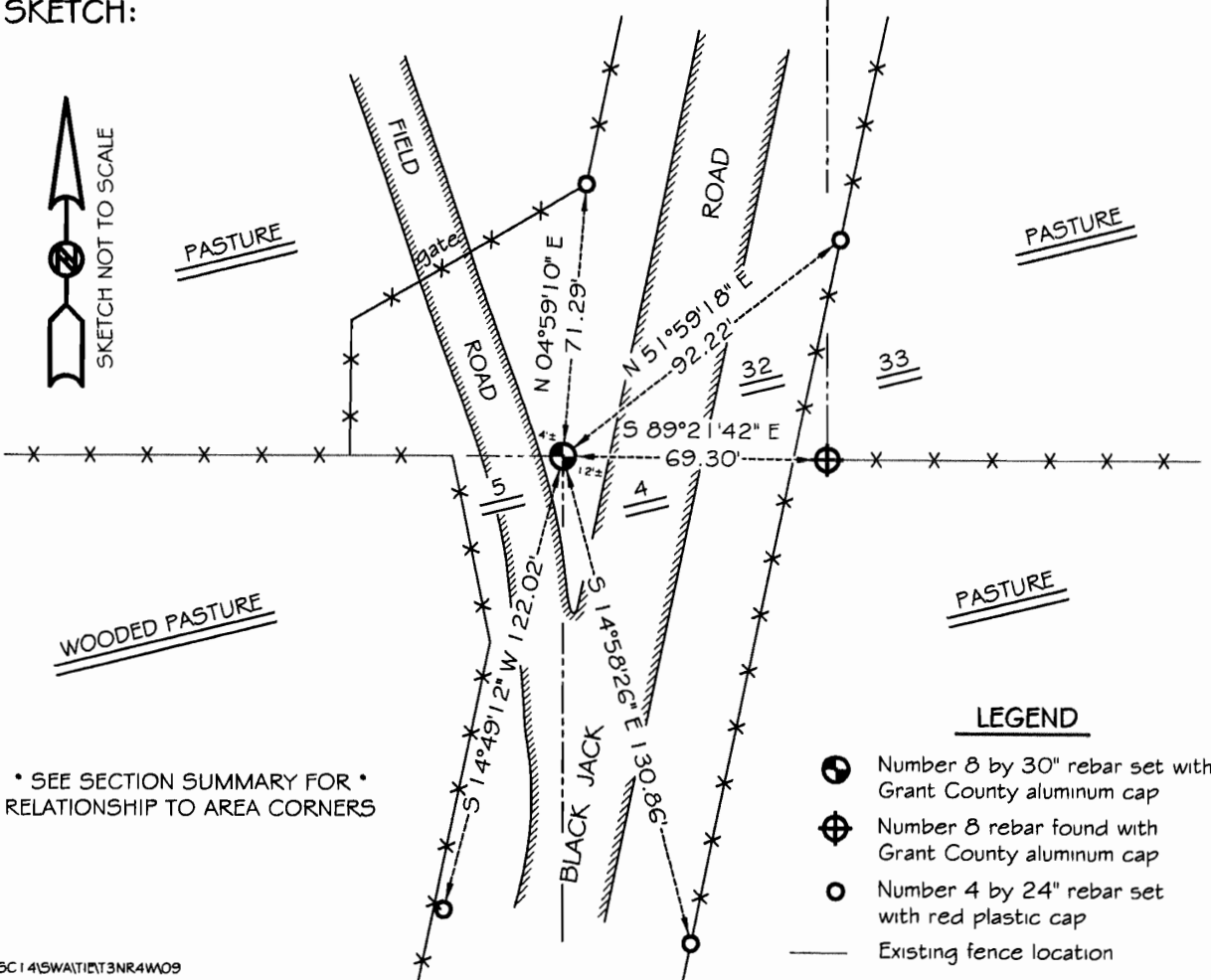
**DESCRIPTION OF CORNER EVIDENCE FOUND:**

I reset the corner at the recorded offset from the Southeast corner of Section 32.  
Verified this location using E.D.M. & G.P.S. methods.

**DESCRIPTION OF CORNER AND WITNESS MONUMENTS, references and accessories used to perpetuate the original or re-established location of this corner**

WITNESS TO THE CORNER LOCATION: SHANE AUSTIN & CODY AUSTIN

**SKETCH:**



\* SEE SECTION SUMMARY FOR \*  
RELATIONSHIP TO AREA CORNERS

# GRANT COUNTY CERTIFIED LAND CORNER

CORNER NUMBER 09

**CERTIFICATE:**

I, Larry L. Austin, do hereby certify that on the 26th day of April, 2000, I found evidence of the Northeast corner of Section 5, Town 3 North, Range 4 West, of the 4th Principal Meridian, and I re-established said corner according to the Wisconsin statutes as shown and described hereon.

Dated this 15th day of May, 2000

*Larry L. Austin*  
Larry L. Austin S-1903

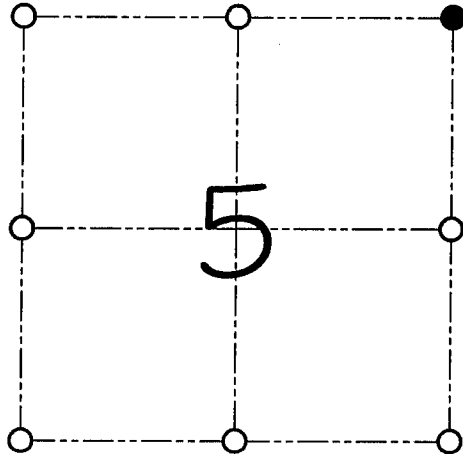


Grant County Corr.

N 495579.7

E 773717.3

SEAL



● = CORNER LOCATION

NORTHEAST CORNER OF  
SECTION 05, T 3 N R 4 W  
TOWN OF WATERLOO

**HISTORY OF ORIGINAL CORNER ESTABLISHMENT:**

Corner was originally set in 1833 by Lucius Lyon.  
No other record of the corner was found.

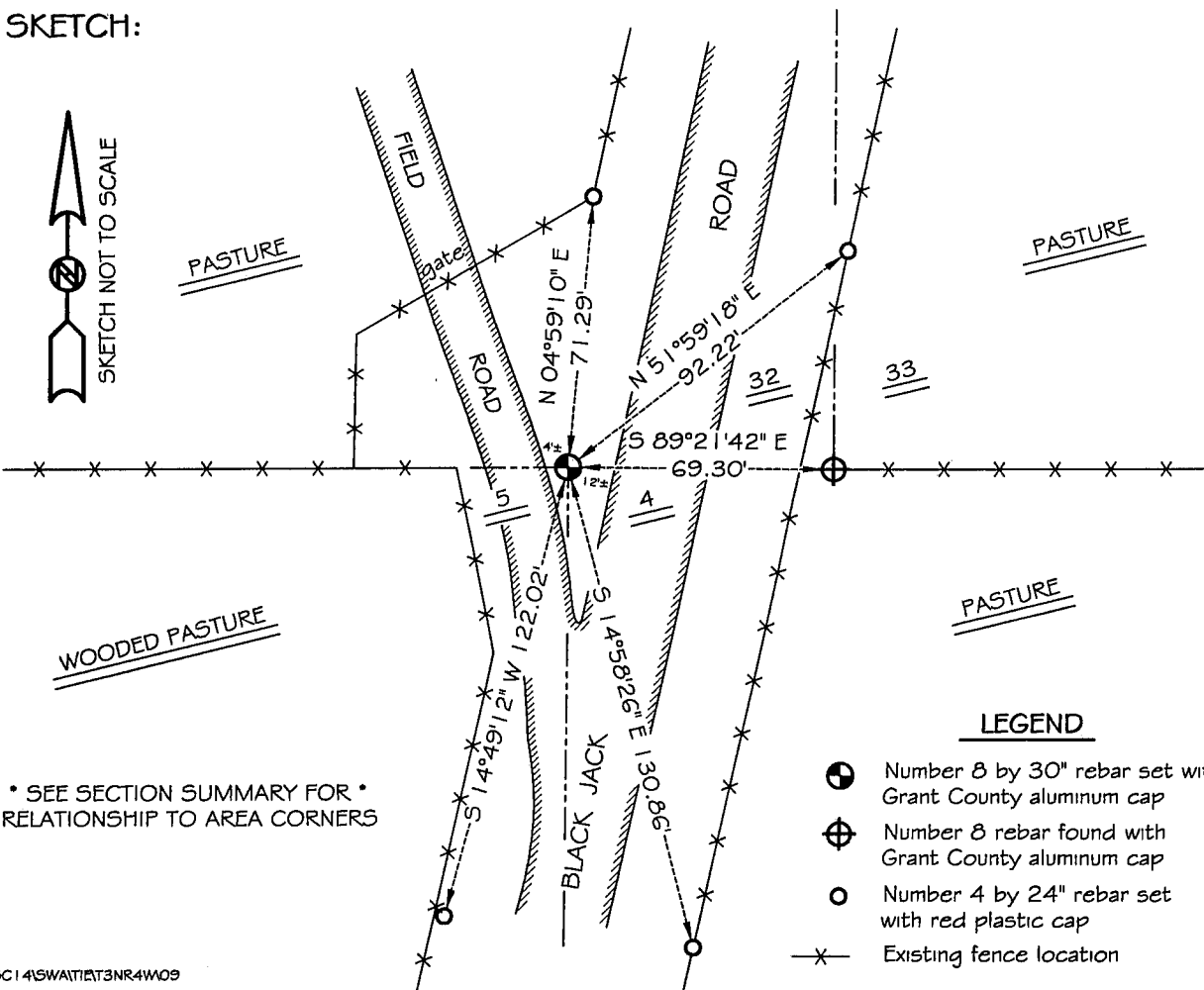
**DESCRIPTION OF CORNER EVIDENCE FOUND:**

I reset the corner at the recorded offset from the Southeast corner of Section 32.  
Verified this location using E.D.M. & G.P.S. methods.

**DESCRIPTION OF CORNER AND WITNESS MONUMENTS, references and accessories used to perpetuate the original or re-established location of this corner**

WITNESS TO THE CORNER LOCATION: SHANE AUSTIN & CODY AUSTIN

**SKETCH:**



C:\SC14\SWATT\T3N4R4W09

# GRANT COUNTY CERTIFIED LAND CORNER

CORNER NUMBER 129

**CERTIFICATE:**

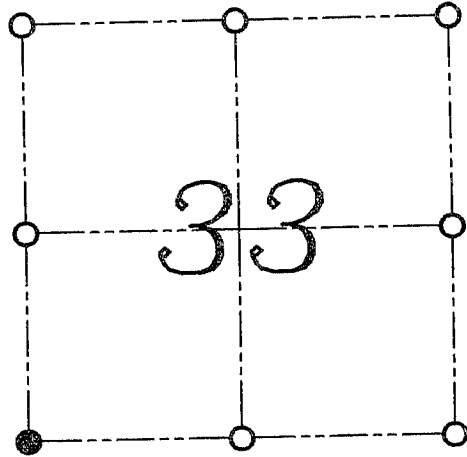
I, LARRY L. AUSTIN, DO HEREBY CERTIFY THAT ON 9th DAY OF NOVEMBER, 1999, I FOUND EVIDENCE OF THE SOUTHWEST CORNER OF SECTION 33, TOWN 4 NORTH, RANGE 4 WEST, OF THE FOURTH PRINCIPAL MERIDIAN, AND I RE-ESTABLISHED SAID CORNER ACCORDING TO THE WISCONSIN STATUTES AS SHOWN AND DESCRIBED HEREON.

DATED THIS 12th DAY OF NOVEMBER, 1999

*Larry L. Austin*  
LARRY L. AUSTIN S-1903



SEAL



● = CORNER LOCATION  
SOUTHWEST CORNER OF  
SECTION 33, T 4 N R 4 W  
TOWN OF BEETOWN

**HISTORY OF ORIGINAL CORNER ESTABLISHMENT:**

CORNER WAS SET IN 1832 BY SIBLEY.  
NO OTHER RECORD OF THE CORNER WAS FOUND.

**DESCRIPTION OF CORNER EVIDENCE FOUND:**

I FOUND AN EXISTING EAST-WEST FOR NORTHING. THE EASTING WAS SET BASED ON PROPORTIONING METHODS. VERIFIED THIS LOCATION USING E.D.M. AND G.P.S. METHODS.

**DESCRIPTION OF CORNER AND WITNESS MONUMENTS, REFERENCES AND ACCESSORIES USED TO PERPETUATE THE ORIGINAL OR RE-ESTABLISHED LOCATION OF THIS CORNER:**  
WITNESS TO THE CORNER LOCATION: BOBBY SEDGWICK ; SHELBY BLINDERT

**SKETCH:**

