

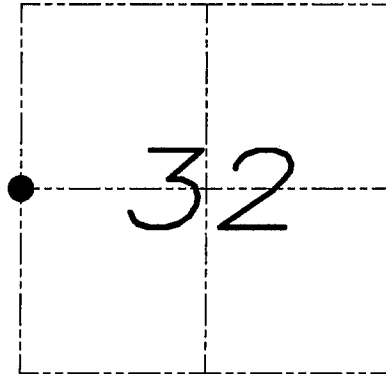
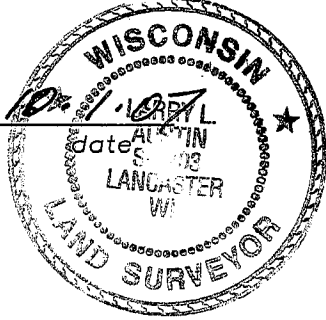
# U.S. PUBLIC LAND SURVEY MONUMENT RECORD

Section 32, Town 4 North Range 4 West, Town of Beetown, Grant County, Wisconsin

## CERTIFICATE

I, Larry L. Austin, do hereby certify that the corner location on this record was determined by me and/or under my direct supervision and that this U.S. public land survey monument record is correct and complete to the best of my knowledge and belief.

*Larry L. Austin*  
Larry L. Austin, S-1903



● = CORNER LOCATION

## HISTORY OF CORNER

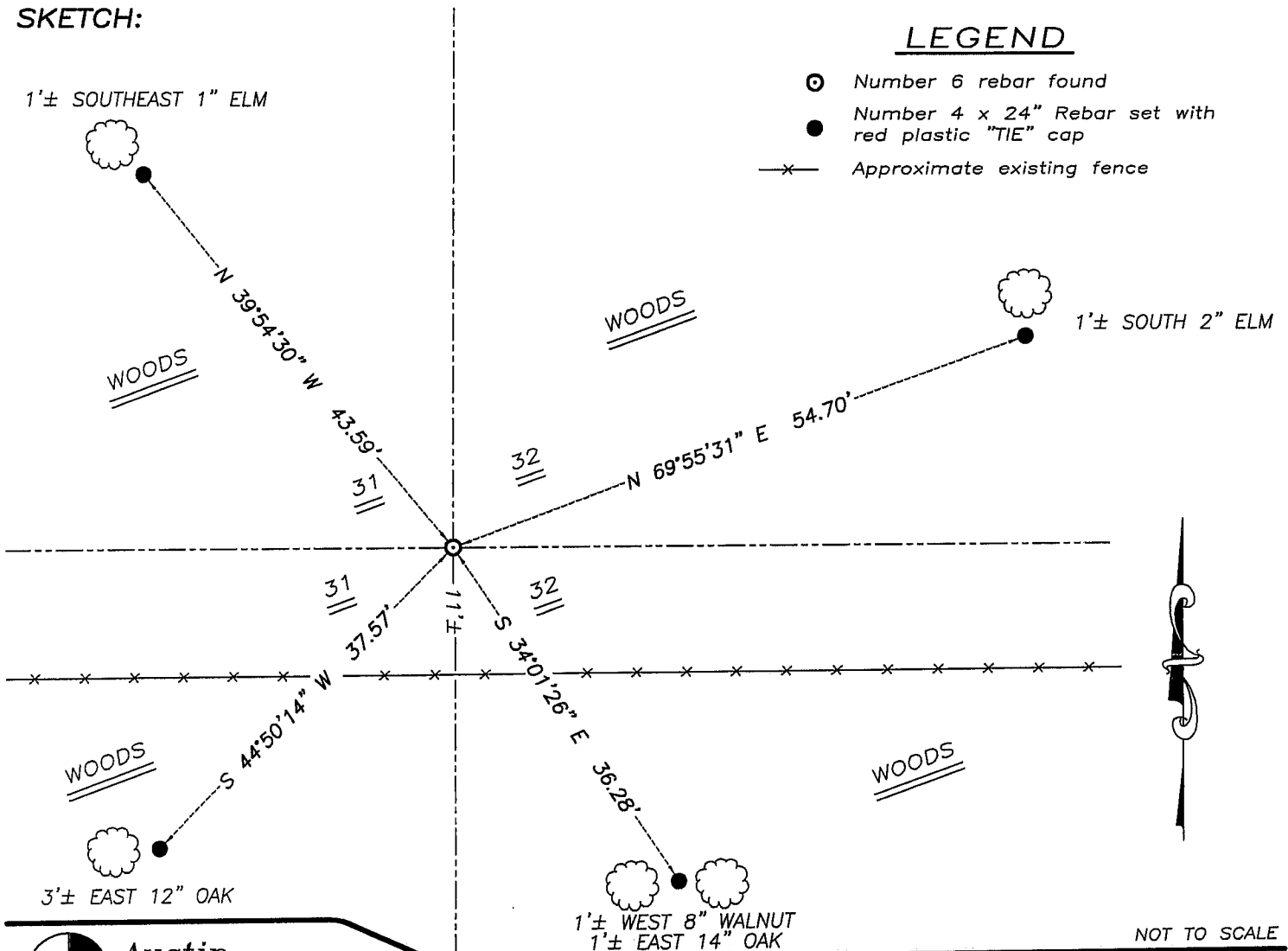
Corner was originally set in 1833 by Clark. In 1848 Stuntz tied to the corner. In 1873 Mcfall tied to the corner. In 1983 Bradshaw set a #6 iron bar at the corner. No other record of the corner was found.

## CORNER EVIDENCE FOUND

I found and accepted the #6 iron bar after an EDM & GPS traverse of the area.

DESCRIPTION OF CORNER AND WITNESS MONUMENTS, references and accessories used to perpetuate the original or re-established location of this corner. Witnesses to monument location Bobby Sedgwick & Brad Digman & Shane Austin

## SKETCH:



## LEGEND

- ⊙ Number 6 rebar found
- Number 4 x 24" Rebar set with red plastic "TIE" cap
- x- Approximate existing fence



**Austin Engineering LLC**

4211 HWY 81 E, LANCASTER, WI 53813  
PHONE 608-723-6363 FAX 608-723-6702

JOB NUMBER 06S050  
FIELDBOOK: TDSR, 2516  
G:\T4NR4W\33  
H:\TIE\T4NR4W\115

DRAWN BY: SW AUSTIN  
APPROVED: LL AUSTIN

NOT TO SCALE