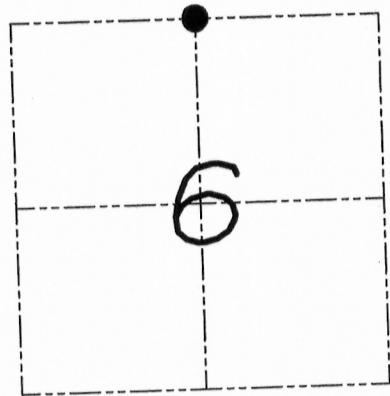


U.S. PUBLIC LAND SURVEY MONUMENT RECORD

Section 6, Town 3 North Range 4 West, Waterloo Township, Grant County, Wisconsin

CERTIFICATE

I, Larry L. Austin, do hereby certify that the corner location on this record was determined by me and/or under my direct supervision and that this U.S. public land survey monument record is correct and complete to the best of my knowledge and belief.

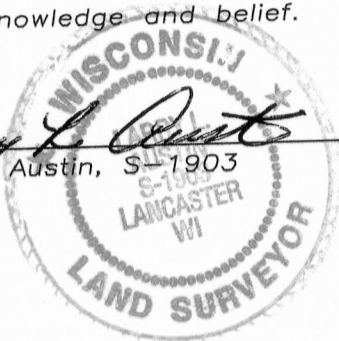


● = CORNER LOCATION

Larry L. Austin
Larry L. Austin, S-1903

8.8.08

date



HISTORY OF CORNER

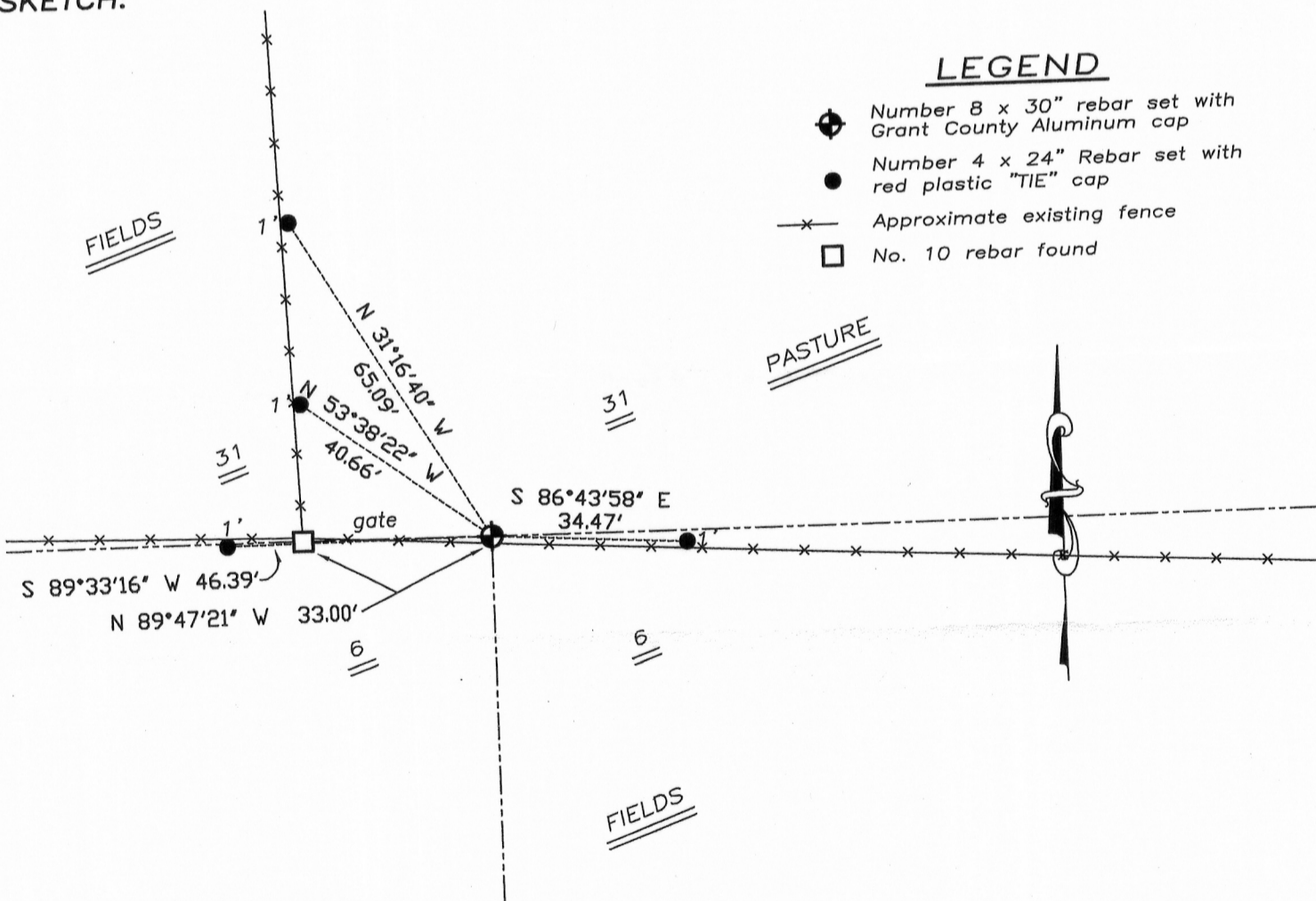
Corner was never originally set. In 1851 Everett tied to the corner. In 1858 Hayden tied to the corner. In 1868 Barber tied to the corner. No other recent record of the corner was found.

CORNER EVIDENCE FOUND

I reset the corner at the recorded offset from the South 1/4 of Section 1, T4N R4W. Verified this location using EDM & GPS methods.

DESCRIPTION OF CORNER AND WITNESS MONUMENTS, references and accessories used to perpetuate the original or re-established location of this corner. Witnesses to monument location Bobby Sedgwick & Brad Digman & Shelby Blindert

SKETCH:



LEGEND

- Number 8 x 30" rebar set with Grant County Aluminum cap
- Number 4 x 24" Rebar set with red plastic "TIE" cap
- x- Approximate existing fence
- No. 10 rebar found

NOT TO SCALE



Austin Engineering LLC

4211 HWY 81 E, LANCASTER, WI 53813
PHONE 608-723-6363 FAX 608-723-6702

JOB NUMBER 08S108
FIELDBOOK: TDSR, 2710
G:\T3NR4W\06
H:\TIE\T3NR4W\12

DRAWN BY: BL STANFLEY
APPROVED: LL AUSTIN

12

MAR 22 2011