

# GRANT COUNTY CERTIFIED LAND CORNER

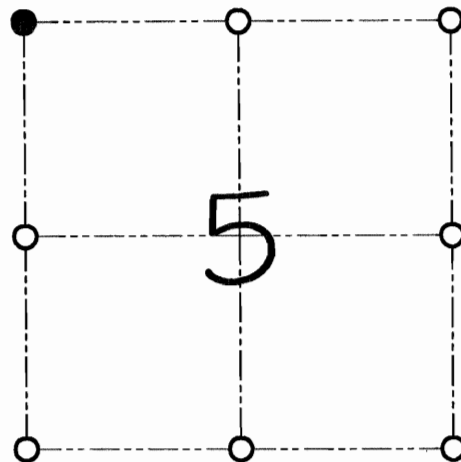
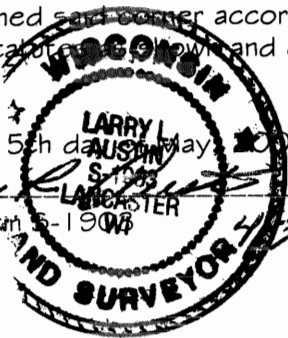
CORNER NUMBER 11

**CERTIFICATE:**

I, Larry L. Austin, do hereby certify that on the 26th day of April, 2000, I found evidence of the Northwest corner of Section 5, Town 3 North, Range 4 West, of the 4th Principal Meridian, and I re-established said corner according to the Wisconsin statute and described hereon.

Dated this 15th day of May, 2000

*Larry L. Austin*  
Larry L. Austin, Surveyor



● = CORNER LOCATION

NORTHWEST CORNER OF  
SECTION 05, T 3 N R 4 W  
TOWN OF WATERLOO

COUNTY COORDINATES  
N=495580.11 E=773684.32

SEAL

**HISTORY OF ORIGINAL CORNER ESTABLISHMENT:**

Corner was originally set in 1833 by Lucius Lyon.  
Bruce Bowden set a 1" iron bar at this location.

**DESCRIPTION OF CORNER EVIDENCE FOUND:**

I found the 1" iron bar set by Bruce Bowden and  
accepted it's location after an E.D.M. & G.P.S. traverse of the area.

**DESCRIPTION OF CORNER AND WITNESS MONUMENTS, references and accessories used to perpetuate the original or re-established location of this corner**

WITNESS TO THE CORNER LOCATION: SHANE AUSTIN & CODY AUSTIN

**SKETCH:**

LEGEND

- 1" Iron bar found
- Number 8 by 30" rebar set with Grant County aluminum cap
- Number 4 by 24" rebar set with red plastic cap
- X— Existing fence location

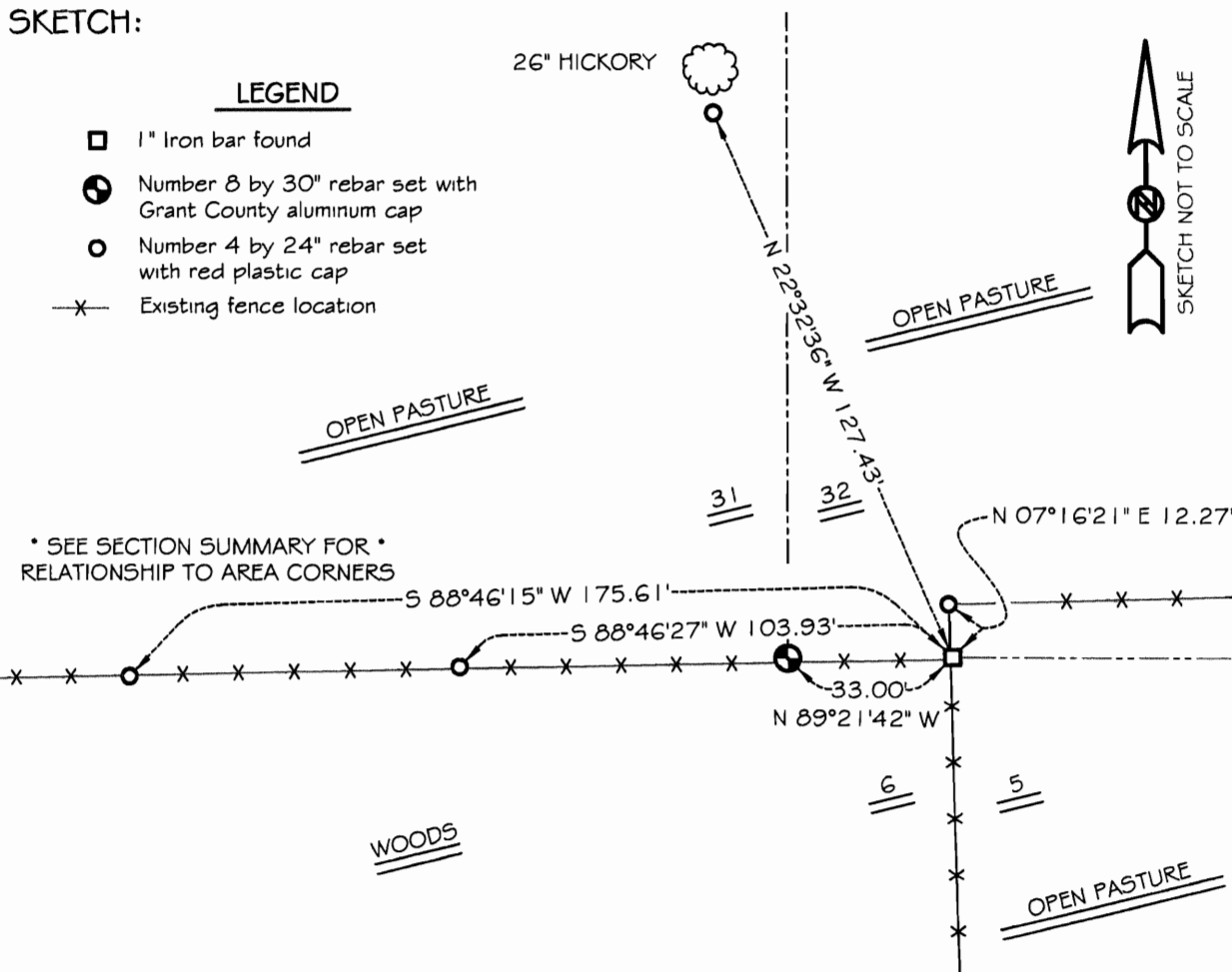
26" HICKORY



OPEN PASTURE

OPEN PASTURE

\* SEE SECTION SUMMARY FOR \*  
RELATIONSHIP TO AREA CORNERS



# GRANT COUNTY CERTIFIED LAND CORNER

CORNER NUMBER 11

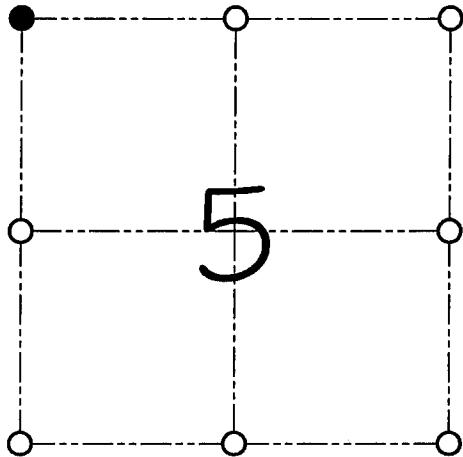
**CERTIFICATE:**

I, Larry L. Austin, do hereby certify that on the 26th day of April, 2000, I found evidence of the Northwest corner of Section 5, Town 3 North, Range 4 West, of the 4th Principal Meridian, and I re-established said corner according to the Wisconsin statutes as shown and described hereon.

Dated this 15th day of May, 2000

*Larry L. Austin*  
Larry L. Austin S-1903

Grant County Cor. No.  
N 495521.88  
E 778909.9



● = CORNER LOCATION  
NORTHWEST CORNER OF SECTION 05, T-3 N R 4 W TOWN OF WATERLOO

**HISTORY OF ORIGINAL CORNER ESTABLISHMENT:**

Corner was originally set in 1833 by Lucius Lyon. Bruce Bowden set a 1" iron bar at this location.

**DESCRIPTION OF CORNER EVIDENCE FOUND:**

I found the 1" iron bar set by Bruce Bowden and accepted it's location after an E.D.M. & G.P.S. traverse of the area.

**DESCRIPTION OF CORNER AND WITNESS MONUMENTS, references and accessories used to perpetuate the original or re-established location of this corner**  
WITNESS TO THE CORNER LOCATION: SHANE AUSTIN & CODY AUSTIN

**SKETCH:**

**LEGEND**

- 1" Iron bar found
- Number 8 by 30" rebar set with Grant County aluminum cap
- Number 4 by 24" rebar set with red plastic cap
- x- Existing fence location

