

**U.S. PUBLIC LAND SURVEY MONUMENT RECORD - GRANT COUNTY, WI**

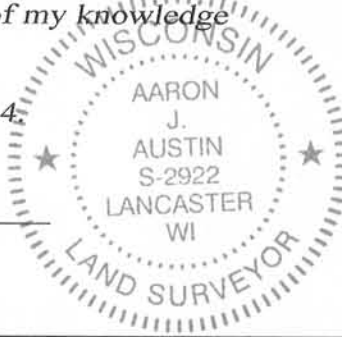
Section 30, Town 4 North Range 4 West, Town of Beetown

**CERTIFICATE:**

I, Aaron J. Austin, do hereby certify that the corner location on this record was determined by me and/or under my direct supervision and that this U.S. Public Land Survey Monument Record is correct and complete to the best of my knowledge and belief.

Dated this 6th day of August, 2014.

*Aaron J. Austin*  
 Aaron J. Austin, S-2922



● = CORNER LOCATION

**HISTORY OF CORNER ESTABLISHMENT:**

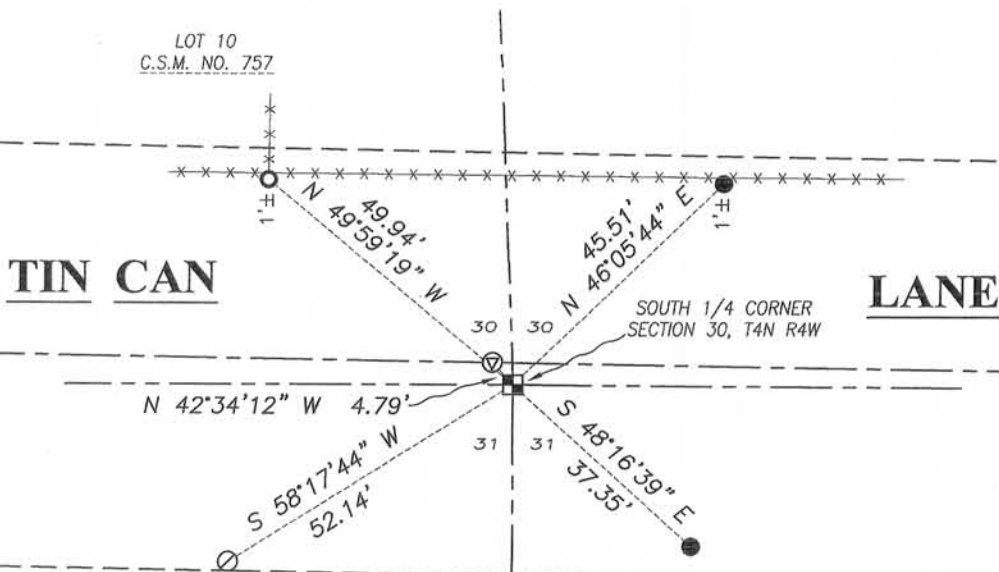
- 1832 Clark set Original Corner.
- 1842 Freeman tied to this corner on a Survey in Book A, Page 98.
- 1842 Freeman tied to this corner on a Survey in Book A, Page 107.
- 1848 Stuntz tied to this corner on a Survey in Book B, Page 120
- Winter of 1992-1993 Curtis Crook Set an Alum Mon. with WisDOT Cap in conjunction with R.O.W. Plat Project No. 5215-02-21.
- 1994 L. Austin tied to a Railroad Spike at this corner on a Survey filed in Book U, Page 15.
- 1995 L. Austin prepared a Tie Sheet for a Railroad Spike at this corner.
- 1997 Wood prepared a Tie Sheet for an Alum. Mon. with WisDOT Cap. (No ties were shown in conjunction with this tie sheet)
- 2000 L. Austin tied to a Railroad Spike at this corner on a Survey filed in Book 8, Page 65.
- 2001 L. Austin found and accepted an Alum. Mon. with WisDOT Cap and prepared a Tie Sheet for this monument.
- 2001 L. Austin tied to an Alum. Mon. with WisDOT Cap at this corner filed on C.S.M.'s No. 755, No. 757, No. 758
- 2010 L. Austin tied to an Alum. Mon. with WisDOT Cap on a Survey filed in Book 27, Page 16.
- 2012 A. Austin tied to an Alum. Mon. with WisDOT Cap at this corner filed on C.S.M. No. 1629.
- 2013 A. Austin tied to an Alum. Mon. with WisDOT Cap at this corner filed on C.S.M. No. 1675.

**DESCRIPTION OF CORNER EVIDENCE FOUND:**

I found and did not accept a Cotton Gin spike at the location of the former Railroad Spike. Larry Austin prepared a tie sheet for this corner in 2001 in which he accepted the Aluminum Monument with Wisconsin DOT cap. I also found and accepted this monument. Two ties were missing for this corner. I set two additional ties and verified this location with E.D.M. and G.P.S. methods.

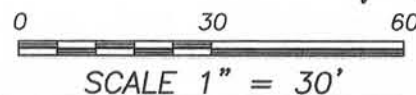
**DESCRIPTION OF CORNER AND WITNESS MONUMENTS, references and accessories used to perpetuate the original or re-established location of this corner. Witnesses to corner location Shane Austin.**

**SKETCH:**



**LEGEND**

- Bernsten Aluminum Monument found with Wisc. Dept. of Transportation Cap
- ⊙ Cotton gin Spike found
- No. 6 rebar found
- No. 4 rebar found
- No. 4 x 12" rebar set with red plastic "TIE" cap
- \*- Existing fence



Bearings referenced to the Grant County Coordinate System (2011 adjustment) which was determined by G.P.S. observation.



**Austin Engineering LLC**  
 austinengineeringllc.com

4211 HWY 81 E, LANCASTER, WI 53813  
 PHONE: 608-723-6363 FAX: 608-723-6702

JOB NO: 14s097  
 G:\14S097  
 H:\TIE\T4NR4W\112(2)

FIELDBOOK: TDSR  
 DRAWN BY: AJ AUSTIN  
 CREW: SW AUSTIN

REC'D JUN 17 1991

U.S. PUBLIC LAND SURVEY MONUMENT RECORD

DT1291 95 (Replaces ED716)

Wisconsin Department of Transportation

T. 4 N. - R. 4 W.  
4th Principal Meridian  
Corner \_\_\_\_\_

County Name <u>GRANT</u>		Name of Township / City / Village (Circle One) <u>BEETOWN</u>	
Surveyor Name <u>F. CURTIS CROOK</u>			
Address, City, State, Zip Code <u>BOX 68 READSTOWN, WI 54652</u>			
X (Easting) <u>1,729,659.01</u>	Y (Northing) <u>287,596.84</u>	Latitude	Longitude
Project ID <u>5215-02-21</u>		Coordinate ID	

HORIZONTAL DATUM

- NAD 27
- NAD 83 (91)

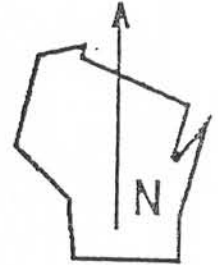
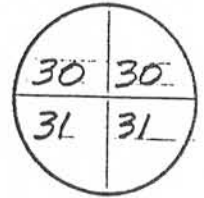
UNITS

- English
- Metric

COORDINATE SYSTEM

- Geodetic
- State Plane SOUTH Zone
- County \_\_\_\_\_

Location Diagram, showing corner identification name, bearing and distance references to at least four witness monuments, fence or occupational lines, centerlines of roads, and other site details for reference. Also, show the bearings and distances between the witness monuments.



This corner was re-established and monumented by F. Curtis Crook, R.L.S. in the winter of 1992-1993. For further information and ties contact him at:

Box-68  
Readstown, WI 54652

Tel: 608-629-5429

Indicate fd. = found or pl. = placed in the diagram above

Bearings used in the location sketch and basis for monument location are assumed, unless as noted.

Monumentation Legend / Description of Corner and Witness Monuments:

A Berntsen aluminum monument with a Wisconsin DOT cap

If applicable, show any discrepancy between the location of the corner as restored or re-established and the location of that corner as previously restored or re-established by bearing and distance. Also, show the bearings and distances between the previous corner and at least two of the witness monuments.

See reverse.

AUG 07 2014

112

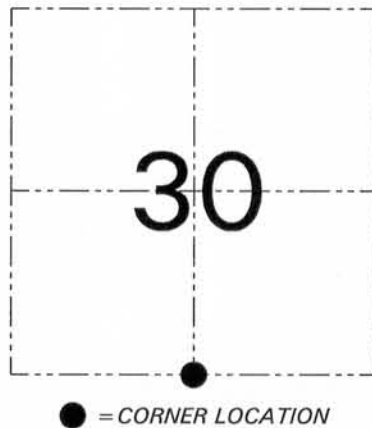
**U.S. PUBLIC LAND SURVEY MONUMENT RECORD - GRANT COUNTY, WI**  
 Section 30, Town 4 North Range 4 West, Town of Beetown

CERTIFICATE

I, Larry L. Austin, do hereby certify that the corner location on this record was determined by me and/or under my direct supervision and that this U.S. public land survey monument record is correct and complete to the best of my knowledge and belief.

Dated this 6th day of April, 2001

*Larry L. Austin*  
 Larry L. Austin S-1903



HISTORY OF CORNER ESTABLISHMENT

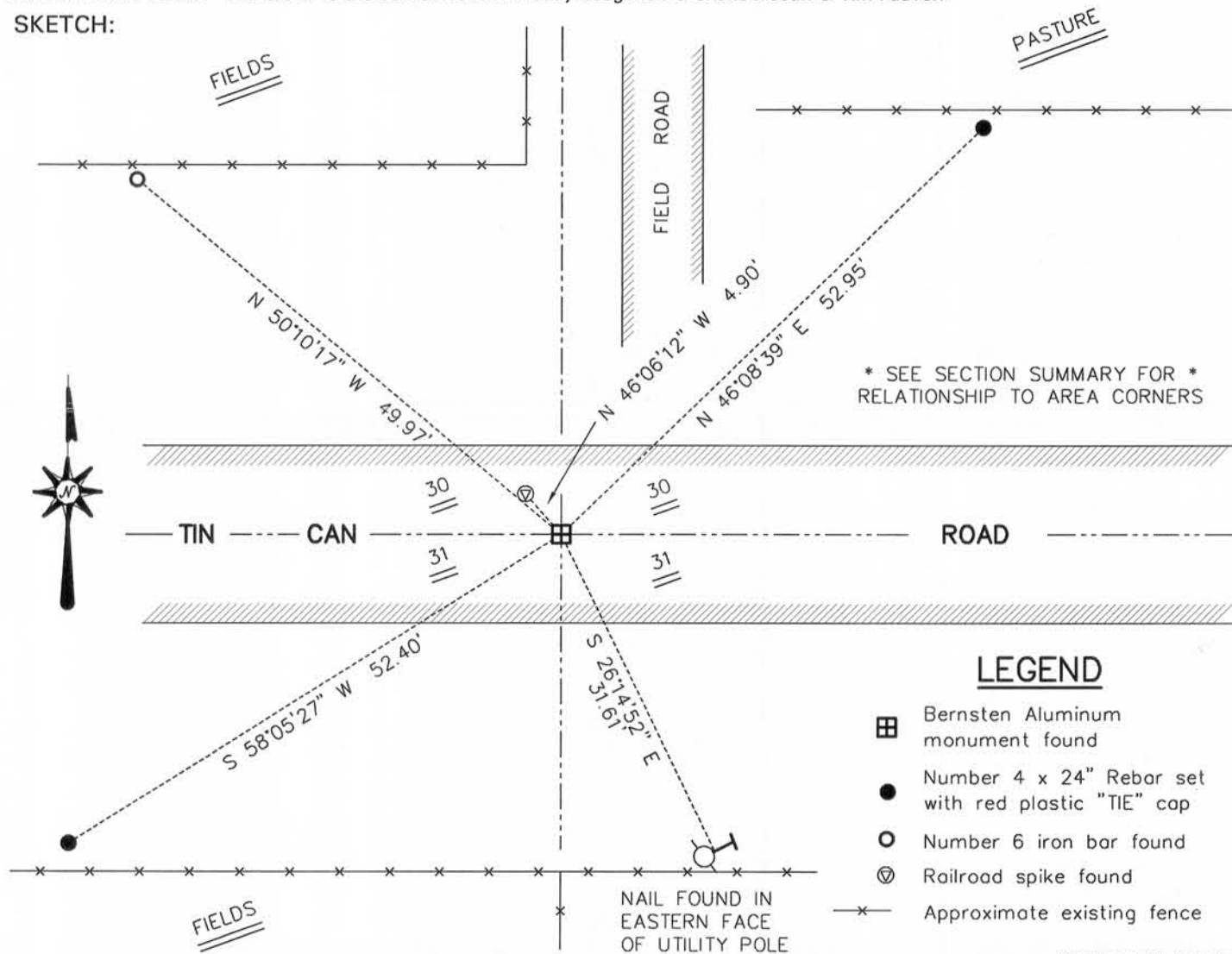
Corner was originally set in 1833 by Robert Clark. In 1868 Barber tied to the corner. In 1992 Crook tied to the corner (no tiesheet). In 1994 I set a railroad spike at this location with a tiesheet. In 1997 Wood filed a tiesheet on Crooks location.

DESCRIPTION OF CORNER EVIDENCE FOUND

I found the railroad spike and the Bernsten cast aluminum monument. I found that the aluminum monument fit the fence to the South rather than fence North. The fence South appears to be older than fence North. I accepted the Woods/Crook location to establish one corner location.

DESCRIPTION OF CORNER AND WITNESS MONUMENTS, references and accessories used to perpetuate the original or re-established location of this corner. Witnesses to the corner location Bobby Sedgwick & Shane Austin & Tim Fauver.

SKETCH:



**AUSTIN ENGINEERING, LLC**  
 4211 HWY 81 EAST, LANCASTER, WI 53813  
 PHONE 608-723-6363 FAX 608-723-6702

FIELDBOOK: SDR33, 2020, 2037  
 G: \T4NR4W\20  
 C: \SWA\TIE\T4NR4W\112  
 CREW: BS-SB-SA-TF

DRAWN BY: SW AUSTIN  
 APPROVED: LL AUSTIN

**CORNER NUMBER 112**

**JUL 24 2014**

# GRANT COLNTY

## Survey Monument Record

TYPE OF MONUMENT RAILROAD SPIKE

STATE PLANE COORDINATES: N \_\_\_\_\_  
E \_\_\_\_\_

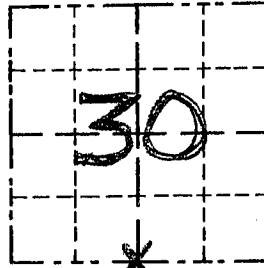
ELEVATION — M.S.L. DATUM: \_\_\_\_\_

THETA ANGLE: \_\_\_\_\_

FIELD BOOK: 92-13

PAGE 33

CORNER NO. 112  
SECTION 30  
TOWN 4 N  
RANGE 4 W  
S 1/4 COR.



LOCATION  
(Indicated by "X")

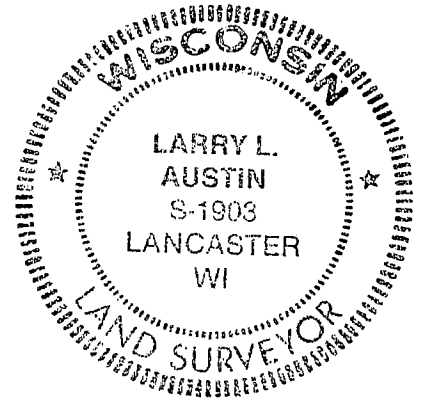
### BASIS FOR MONUMENT LOCATION

(Use reverse side if necessary)

Show info such as: History of corner, with reference to Vol. and pg., dates, surveyor; exact description of monument replaced; if location computed, by taped or EDM traverse; landowner, remarks, etc.

SEAL:

ORIGINAL CORNER WAS SET  
IN 1833 BY ROBERT CLARK.  
NO RECORD FOUND SINCE  
ORIGINAL SURVEY. OCCUPATIONAL  
EVIDENCE WAS ACCEPTED  
AND VERIFIED BY EDM TRAVERSE  
OF THE AREA



CERTIFIED CORRECT

*Larry L. Austin*  
Registered Land Surveyor

DATE: 11/10/95

### TIE SKETCH

Show at least three (3) ties and monument

