

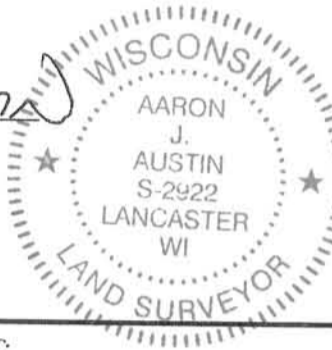
U.S. PUBLIC LAND SURVEY MONUMENT RECORD - GRANT COUNTY, WI
 Section 29, Town 4 North Range 4 West, Town of Beetown

CERTIFICATE:

I, Aaron J. Austin, do hereby certify that the corner location on this record was determined by me and/or under my direct supervision and that this U.S. Public Land Survey Monument Record is correct and complete to the best of my knowledge and belief.

Dated this 11th day of June, 2011.

Aaron J. Austin
 Aaron J. Austin, S-2922



● = CORNER LOCATION

HISTORY OF CORNER ESTABLISHMENT:

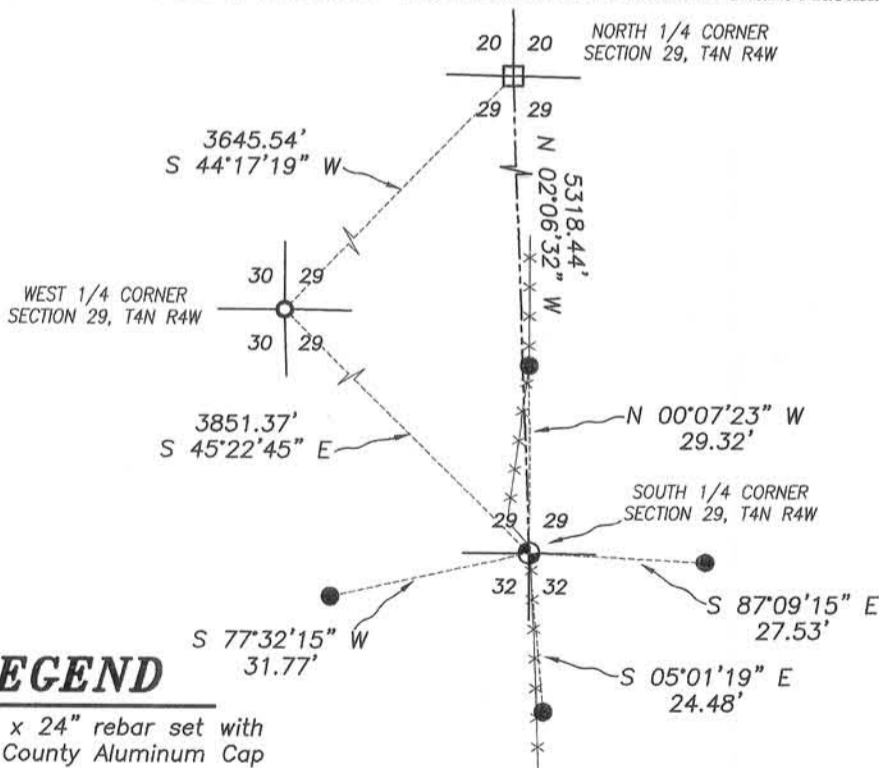
1832-Corner originally set by Robert Clark.
 Corner was tied to on a survey in Book A, Page 101.
 Corner was tied to on a Survey in Book A, Page 157.
 Corner was tied to on a survey in Book A, Page 245.
 Corner was tied to on a Survey in Book B, Page 99.
 Corner was tied to on a Survey in Book C, Page 258.
 1990 Richard Marks reset the corner and prepared a U.S. Public Land Survey Monument Record.
 1990 Richard Marks tied to the corner on C.S.M. No. 297.
 2003 Larry Austin tied to the corner on a Survey in Book 13, Page 74.
 2006 Larry Austin tied to the corner on a Survey in Book 19, Page 91
 2008 Larry Austin tied to the corner on a Survey in Book 23, Page 41.
 2009 Larry Austin tied to the corner on a Survey in Book 24, Page 78.

DESCRIPTION OF CORNER EVIDENCE FOUND:

Corner and Ties could not be recovered due to excavation and fence replacement. I reset the corner based upon measurements taken to the North 1/4 corner and West 1/4 corner of Section 29 (as shown on Certified Survey Map No. 297). I reset 4 new ties and verified this location with G.P.S. and E.D.M. methods.

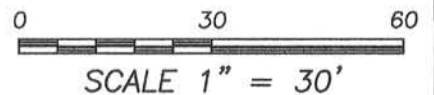
DESCRIPTION OF CORNER AND WITNESS MONUMENTS, references and accessories used to perpetuate the original or re-established location of this corner. Witnesses to corner location Shane Austin.

SKETCH:



LEGEND

- ⊕ No. 8 x 24" rebar set with Grant County Aluminum Cap
- No. 4 x 12" rebar set with cap
- ⊞ Bernsten Cast Aluminum Monument found
- No. 6 rebar found
- *- Approximate fence



SCALE 1" = 30'



4211 HWY 81 E, LANCASTER, WI 53813
 PHONE: 608-723-6363 FAX: 608-723-6702

JOB NO: 13s207
 G:\13s207
 H:\TIE\T4NR4W\110

FIELDBOOK: TDSR
 DRAWN BY: AJ AUSTIN
 CREW: SW AUSTIN

FEB 20 1990

RECEIVED

U.S. PUBLIC LAND SURVEY MONUMENT RECORD

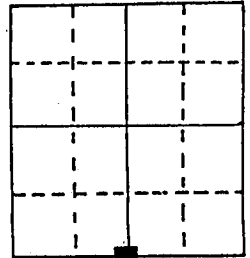
Note: This form is intended and designed to fulfill all requirements of Wisconsin Administrative Code, Chapter A-E 5.02, U.S. Public Land Survey Monument Record (3) (a) (b) (c) (d) (e) (f) (g) (h) (i). An additional sheet may be added if necessary to conform with said requirements.

(a) Corner location: Township 4 North

Range 4 East/West

Town/City/Village Beetown

County Grant

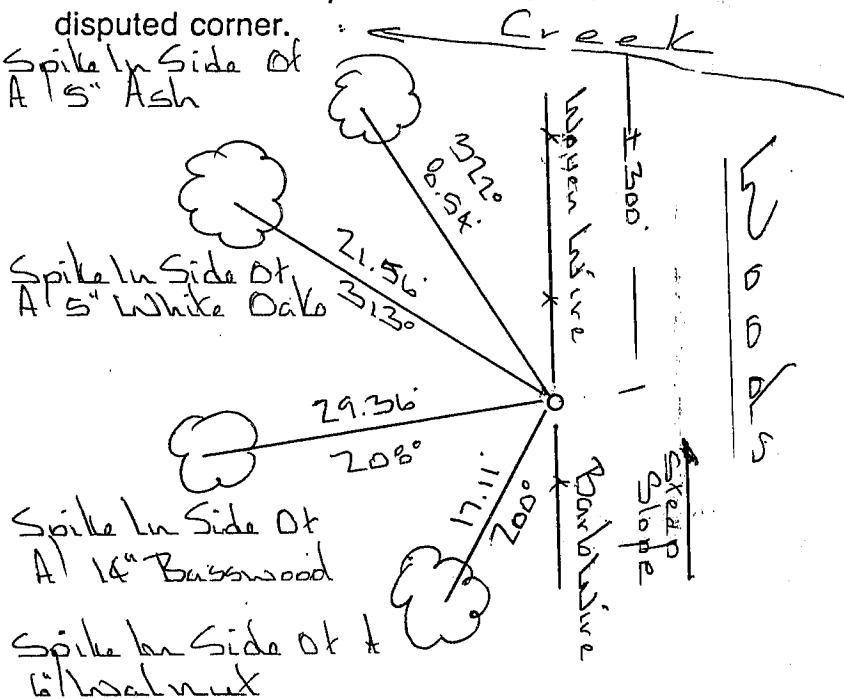


Section 29

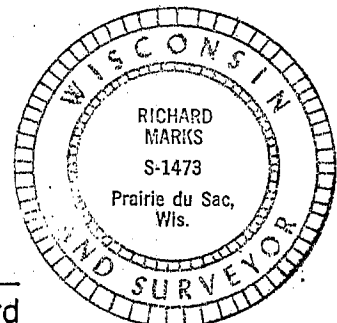
(b) (f) (g) (h) Description of monument found at this corner and if it was accepted, state all evidence (material, testimonial, occupational, plats, records, other monuments) used as a basis for accepting. If not accepted or if nothing was found, state evidence used as basis for establishing location. If reestablished through lost corner proportionate methods, indicate all monuments, distances and directions used to establish.

Set Corner At Change In Fences

(c) (d) (e) Plan view of corner with ties to at least 4 witness monuments. If in disagreement with previously established corner, show the distances between the two corners and also indicate the ties to the disputed corner.



Azimuths Are Unadjusted Magnetic
Set 3/4" x 24" Solid Round Iron Rod At Corner



(i) I, Richard Marks
(type or print name) certify that the corner location on this record was determined by me or under my direction and control and that this U.S. Public Land Survey Monument Record is correct and complete to the best of my knowledge and belief.

Affix seal here

[Signature] 2/15/1990
Signature Date