

GRANT COUNTY CERTIFIED LAND CORNER

CORNER NUMBER 97

CERTIFICATE:

I, Larry L. Austin, do hereby certify that on the 5th day of October, 2000, I found evidence of the West 1/4 corner of Section 27, Town 4 North, Range 4 West, of the 4th Principal Meridian, and I re-established said corner according to the Wisconsin statutes as shown and described hereon.

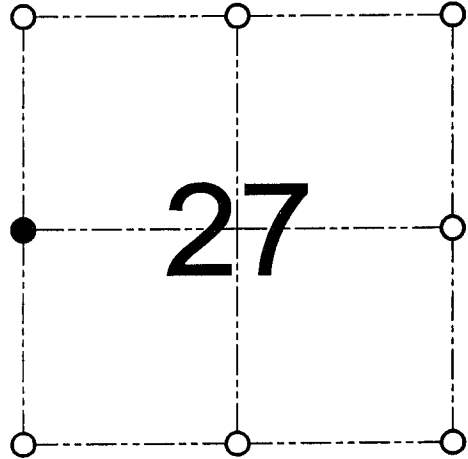
Dated this 15th day of November, 2000

Larry L. Austin
Larry L. Austin S-1903

Grant County Coor.

N 503411.8

E 784039.1



● = CORNER LOCATION

WEST 1/4 CORNER OF
SECTION 27, T 4 N R 4 W
TOWN OF BEETOWN

HISTORY OF ORIGINAL CORNER ESTABLISHMENT:

Corner was originally set in 1833 by Clark.
In 1877 Barber tied to the corner.

DESCRIPTION OF CORNER EVIDENCE FOUND:

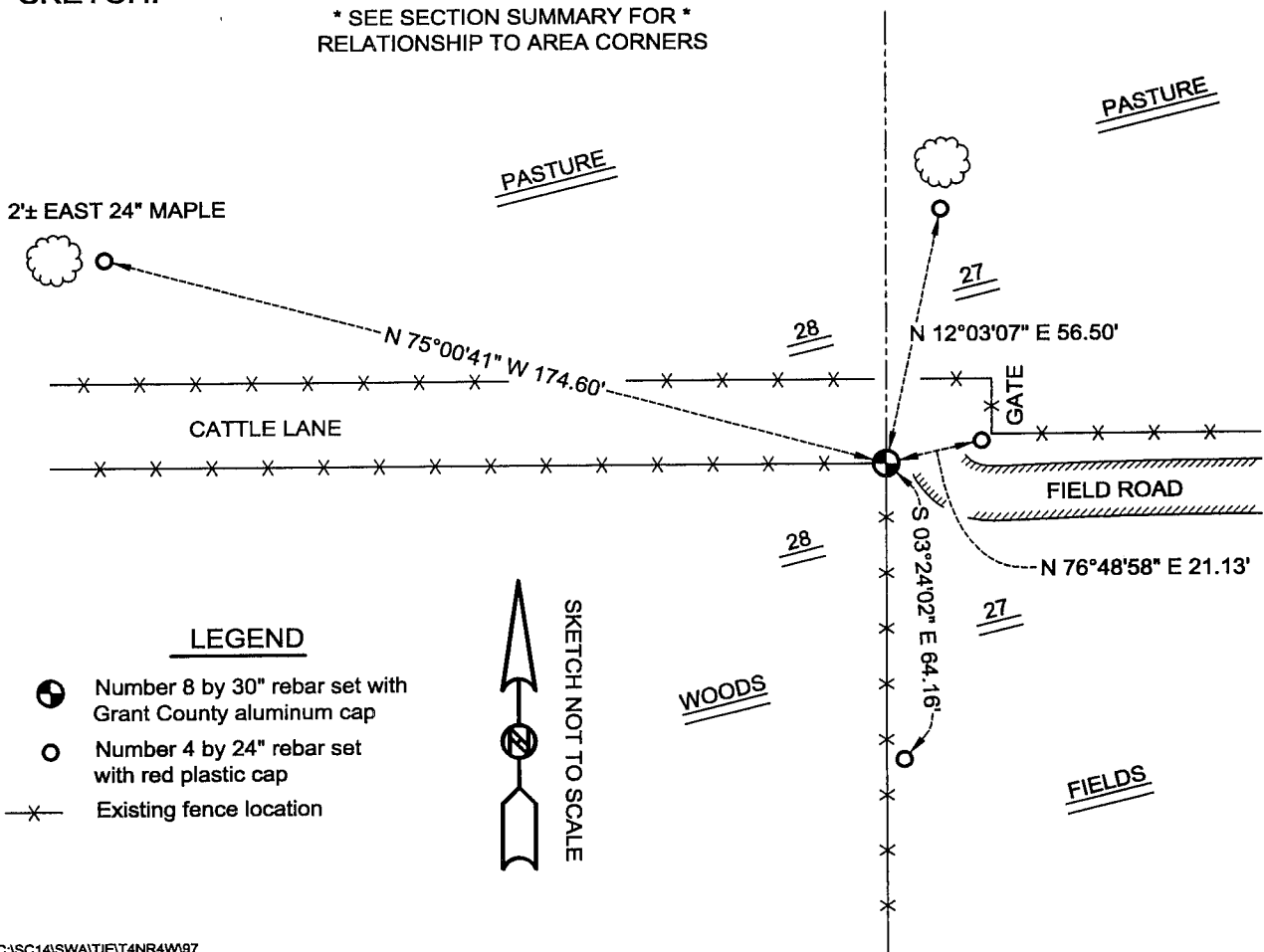
I found a fence corner and accepted it's location after
an EDM & GPS traverse of the area.

DESCRIPTION OF CORNER AND WITNESS MONUMENTS, references and accessories used to perpetuate the original or re-established location of this corner

WITNESS TO THE CORNER LOCATION: SHANE AUSTIN & SHELBY BLINDERT & BOBBY SEDGWICK

SKETCH:

* SEE SECTION SUMMARY FOR *
RELATIONSHIP TO AREA CORNERS



LEGEND

- Number 8 by 30" rebar set with Grant County aluminum cap
- Number 4 by 24" rebar set with red plastic cap
- x— Existing fence location

