

# GRANT COUNTY

## Survey Monument Record

TYPE OF MONUMENT 3/4" X 24" IRON BAR SET

STATE PLANE COORDINATES: N \_\_\_\_\_  
E \_\_\_\_\_

ELEVATION — M.S.L. DATUM: \_\_\_\_\_

THETA ANGLE: \_\_\_\_\_

FIELD BOOK: 96-18

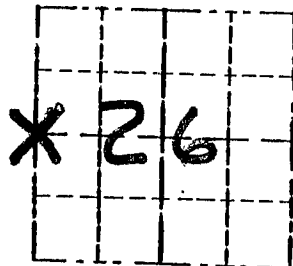
PAGE \_\_\_\_\_

CORNER NO. 98

SECTION 26

TOWN 4N

RANGE 4W

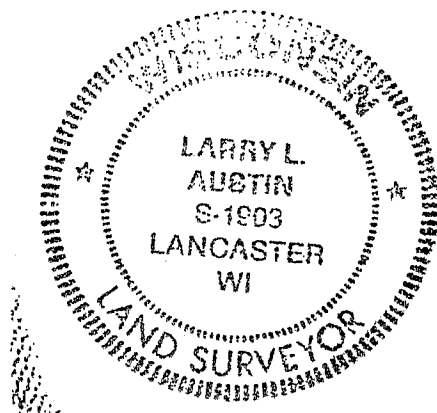


LOCATION  
(Indicated by "X")

### BASIS FOR MONUMENT LOCATION

(Use reverse side if necessary)

CORNER SET IN 1833 BY  
ROBERT CLARK, IN 1875 JOEL  
BARBER FOUND THE ORIGINAL SEAL:  
CORNER. HOMER D. RALPH JR  
WENT TO THE CORNER IN 1969  
NO MONUMENT WAS PLACED, I  
ACCEPTED A FENCE WEST FOR  
NORTHING AND A PROJECTION OF  
CENTERLINE FROM THE NORTH FOR  
EASTING, VERIFIED ITS LOCATION  
USING EDM METHODS.



CERTIFIED CORRECT

*Larry L. Austin*  
Registered Land Surveyor

DATE: 12-2-96

### TIE SKETCH

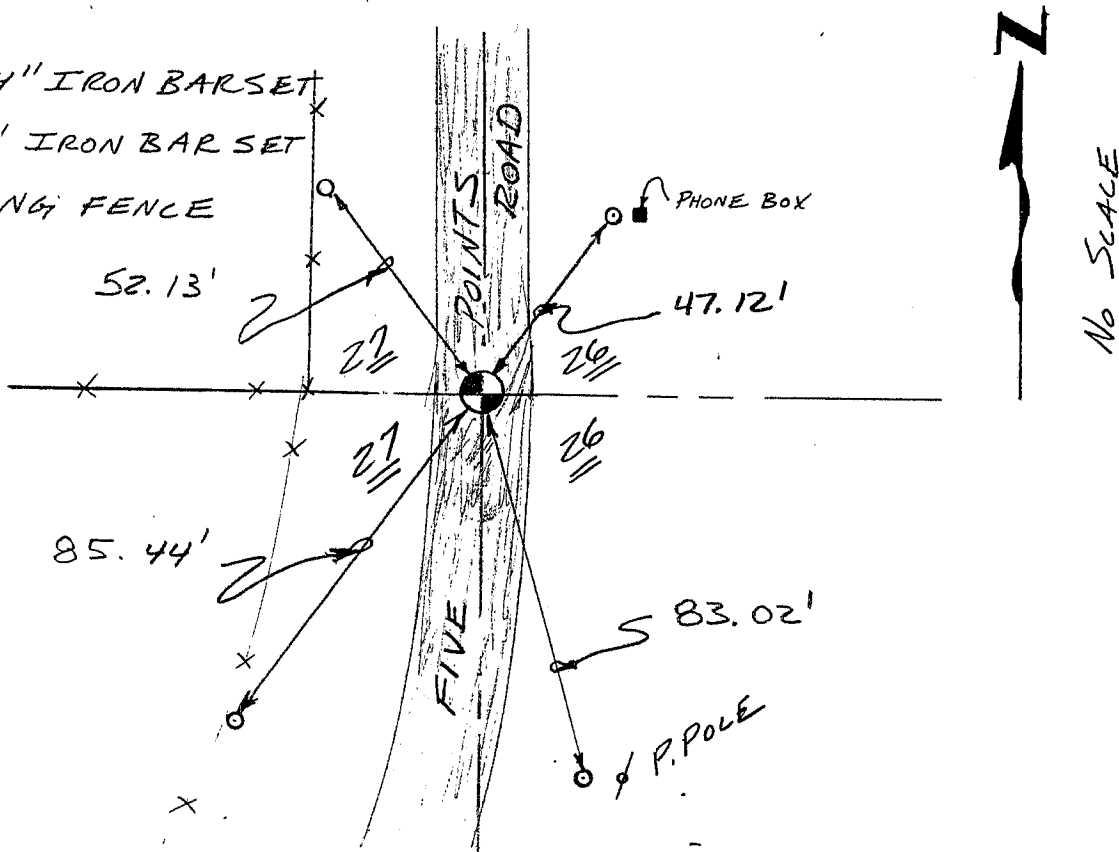
Show at least three (3) ties and monument

#### LEGEND

⊙ 3/4" X 24" IRON BAR SET

○ 1/2" X 18" IRON BAR SET

--- EXISTING FENCE



No SCALE