

# GRANT COUNTY

## Survey Monument Record

TYPE OF MONUMENT 3/4" X 24" IRON BAR SET

STATE PLANE COORDINATES: N \_\_\_\_\_  
E \_\_\_\_\_

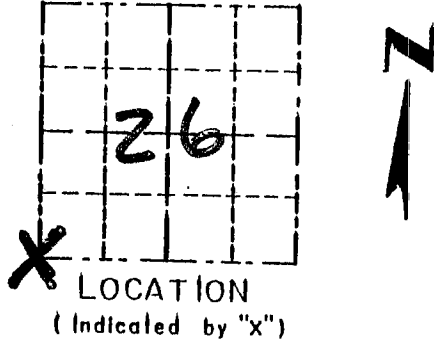
ELEVATION — M.S.L. DATUM: \_\_\_\_\_

THETA ANGLE: \_\_\_\_\_

FIELD BOOK: 96-18

PAGE \_\_\_\_\_

CORNER NO. 105  
SECTION 26  
TOWN 4N  
RANGE 4W

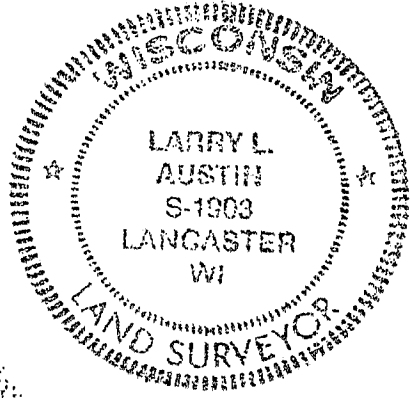


### BASIS FOR MONUMENT LOCATION

(Use reverse side if necessary)

CORNER SET IN 1833 BY  
ROBERT CLARK. I ACCEPTED  
A NORTH / SOUTH FENCE FOR  
EASTING; N-S LOCATION ESTABLISHED  
BY PROJECTING A LINE FROM THE  
3/4 CORNER WEST THROUGH "40" COR.  
VERIFIED THIS LOCATION USING  
EDM METHODS.

SEAL:



CERTIFIED CORRECT

*Larry L. Austin*  
Registered Land Surveyor

DATE: 12-2-96

### TIE SKETCH

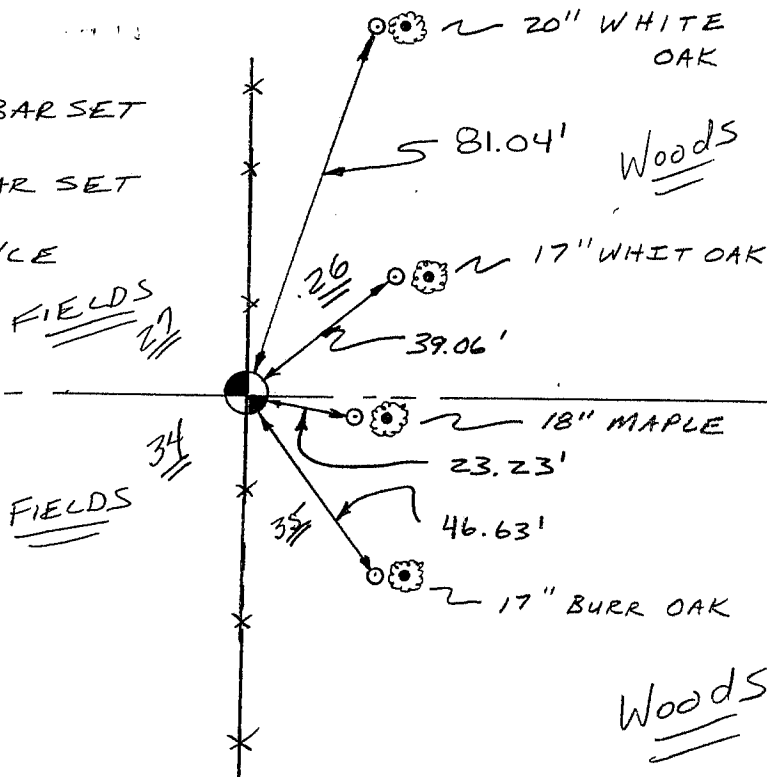
Show at least three (3) ties and monument.

#### LEGEND

⊕ 3/4" X 24" IRON BAR SET

○ 1/2" X 18" IRON BAR SET

--- EXISTING FENCE



NO SCALE