

U.S. PUBLIC LAND SURVEY MONUMENT RECORD - GRANT COUNTY, WI

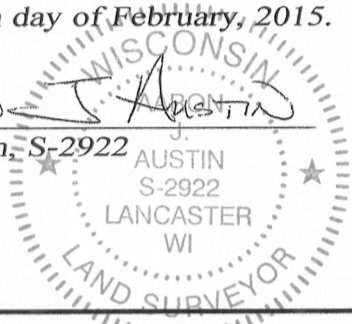
Section 26, Town 4 North Range 4 West, Town of Beetown

CERTIFICATE:

I, Aaron J. Austin, Wisconsin Professional Land Surveyor, do hereby certify that the corner location on this record was determined by me and/or under my direct supervision and that this U.S. Public Land Survey Monument Record is correct and complete to the best of my knowledge and belief.

Dated this 17th day of February, 2015.

Aaron J. Austin
 Aaron J. Austin, S-2922



● = CORNER LOCATION

HISTORY OF CORNER ESTABLISHMENT:

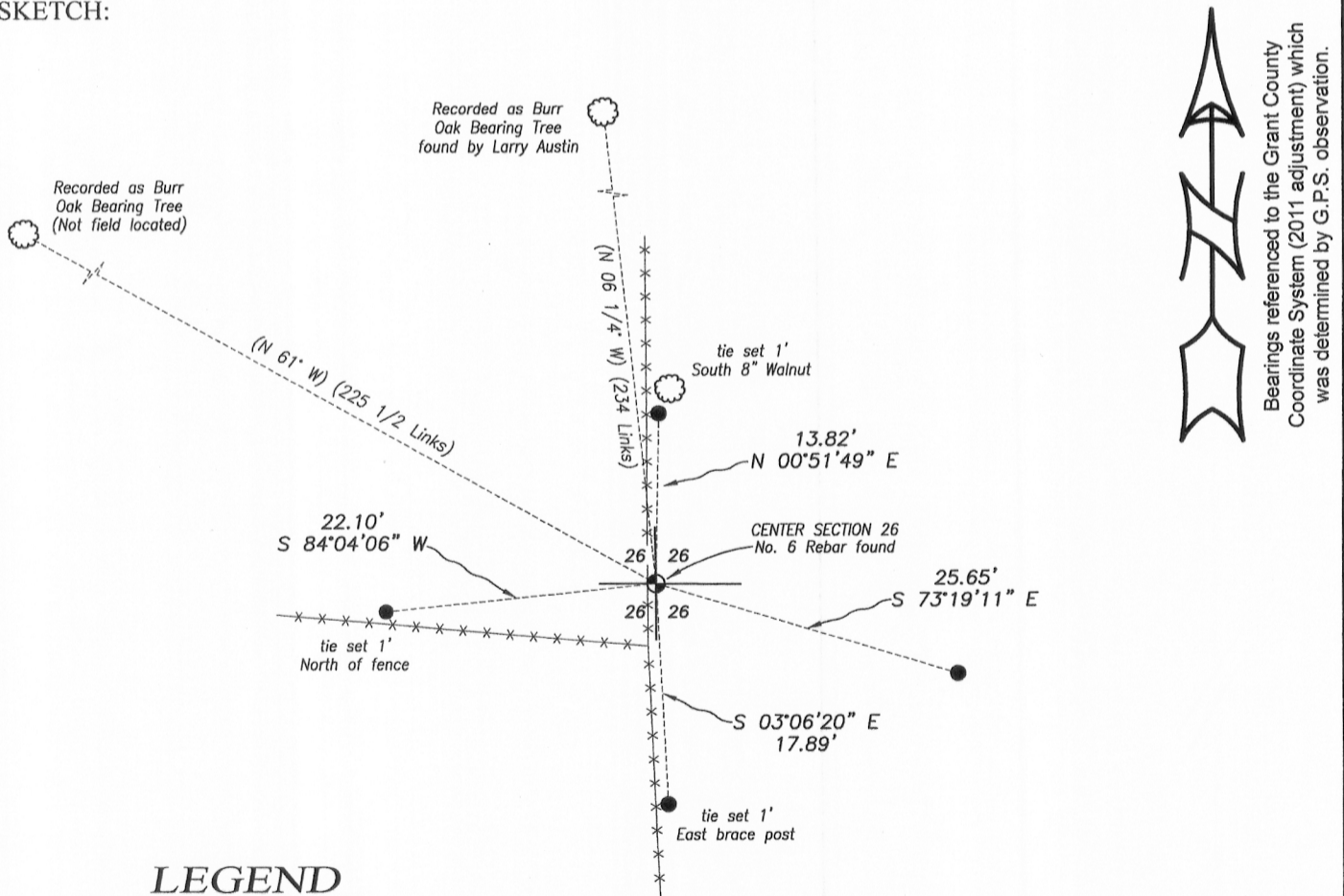
Corner was not set with Original Survey.
 1875 Joel Barber set the corner on a Survey in Book B, Page 537.
 1996 Larry Austin set a No. 6 rebar at this corner on a Survey in Book X, Page 63.

DESCRIPTION OF CORNER EVIDENCE FOUND:

After obtaining field notes from Larry Austin, it was determined that he reset the corner at the recorded distance of a found bearing tree and online with an existing fence. I found the No. 6 rebar set by Austin and set four witness corners as shown hereon. This location was verified with E.D.M. and G.P.S. methods.

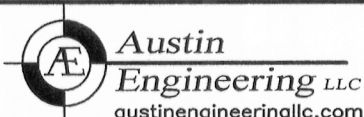
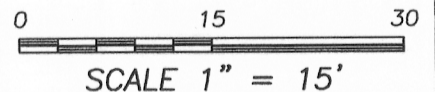
DESCRIPTION OF CORNER AND WITNESS MONUMENTS, references and accessories used to perpetuate the original or re-established location of this corner. Witnesses to corner location Shane Austin and Aaron Austin.

SKETCH:



LEGEND

- Section Corner—as designated
- Number 4 x 12" Rebar set
- x-x- Approximate existing fence



4211 HWY 81 E, LANCASTER, WI 53813
 PHONE: 608-723-6363 FAX: 608-723-6702

JOB NO: 15s002
 H:\CRD\15s002-PENNEKAMP
 H:\TIE\T4NR4W\98.5

FIELDBOOK: TDSR
 DRAWN BY: AJ AUSTIN
 CREW: SW AUSTIN, AJ AUSTIN