

U.S. PUBLIC LAND SURVEY MONUMENT RECORD - GRANT COUNTY, WI

Section 25, Town 4 North Range 4 West, Town of Beetown

CERTIFICATE:

I, Aaron J. Austin, do hereby certify that the corner location on this record was determined by me and/or under my direct supervision and that this U.S. Public Land Survey Monument Record is correct and complete to the best of my knowledge and belief.

Dated this 5th day of June, 2012.

Aaron J. Austin
 Aaron J. Austin, S-2922



● = CORNER LOCATION

HISTORY OF CORNER ESTABLISHMENT:

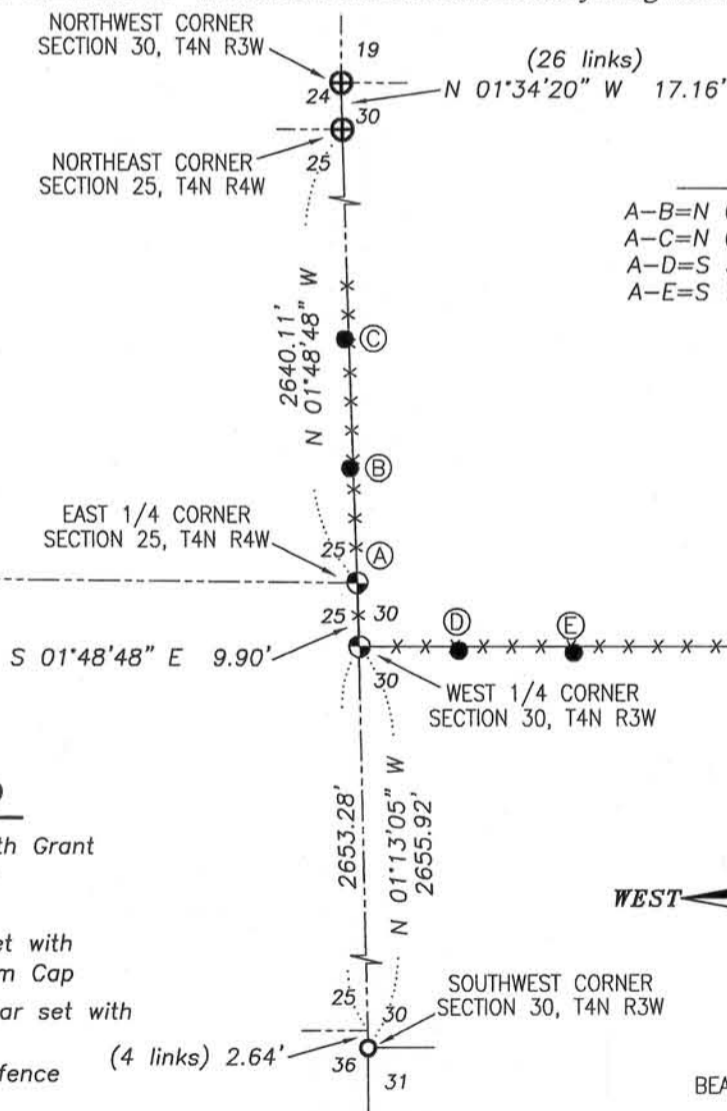
Corner was originally set in 1832 by Sibley. This corner was also shown on a survey by Wiltse in 1844, filed in Book A, Page 239, Grant County Surveys, Grant County Tax Lister's Office. No other record was found for this corner.

DESCRIPTION OF CORNER EVIDENCE FOUND:

No evidence of the corner was found. I reset the corner at the prorated offest between the West 1/4 corner of Section 30, T4N R3W and the Northeast corner of Section 25. I verified this location by E.D.M. and G.P.S. methods.

DESCRIPTION OF CORNER AND WITNESS MONUMENTS, references and accessories used to perpetuate the original or re-established location of this corner. Witnesses to corner location Bobby Sedgwick & Shelby Blindert

SKETCH:



TABULATION

A-B	= N 03°20'28" W	17.72'
A-C	= N 02°46'38" W	37.80'
A-D	= S 56°38'14" E	19.10'
A-E	= S 72°16'58" E	35.54'

LEGEND

- ⊕ No. 8 rebar found with Grant County Aluminum Cap
- No. 6 rebar found
- ⊗ No. 8 x 30" rebar set with Grant County Aluminum Cap
- Number 4 x 24" Rebar set with red plastic "TIE" cap
- x-x- Approximate existing fence

SKETCH NOT TO SCALE



4211 HWY 81 E, LANCASTER, WI 53813
 PHONE: 608-723-6363 FAX: 608-723-6702

JOB NO: 12s069
 G:\T4NR4W\22
 H:\TIE\T4NR4W\100

FIELDBOOK: TDSR
 DRAWN BY: AJ AUSTIN
 CREW: BS-SB

U.S. PUBLIC LAND SURVEY MONUMENT RECORD - GRANT COUNTY, WI

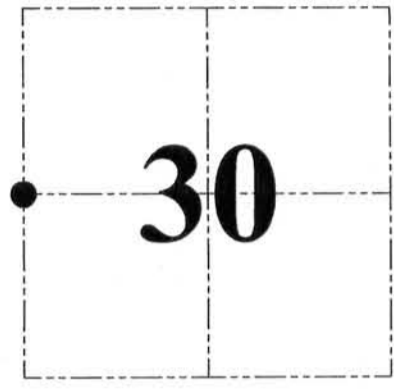
Section 30, Town 4 North Range 3 West, Town of South Lancaster

CERTIFICATE:

I, Aaron J. Austin, do hereby certify that the corner location on this record was determined by me and/or under my direct supervision and that this U.S. Public Land Survey Monument Record is correct and complete to the best of my knowledge and belief.

Dated this 5th day of June, 2012.

Aaron J. Austin
 Aaron J. Austin, S-2922



● = CORNER LOCATION

HISTORY OF CORNER ESTABLISHMENT:

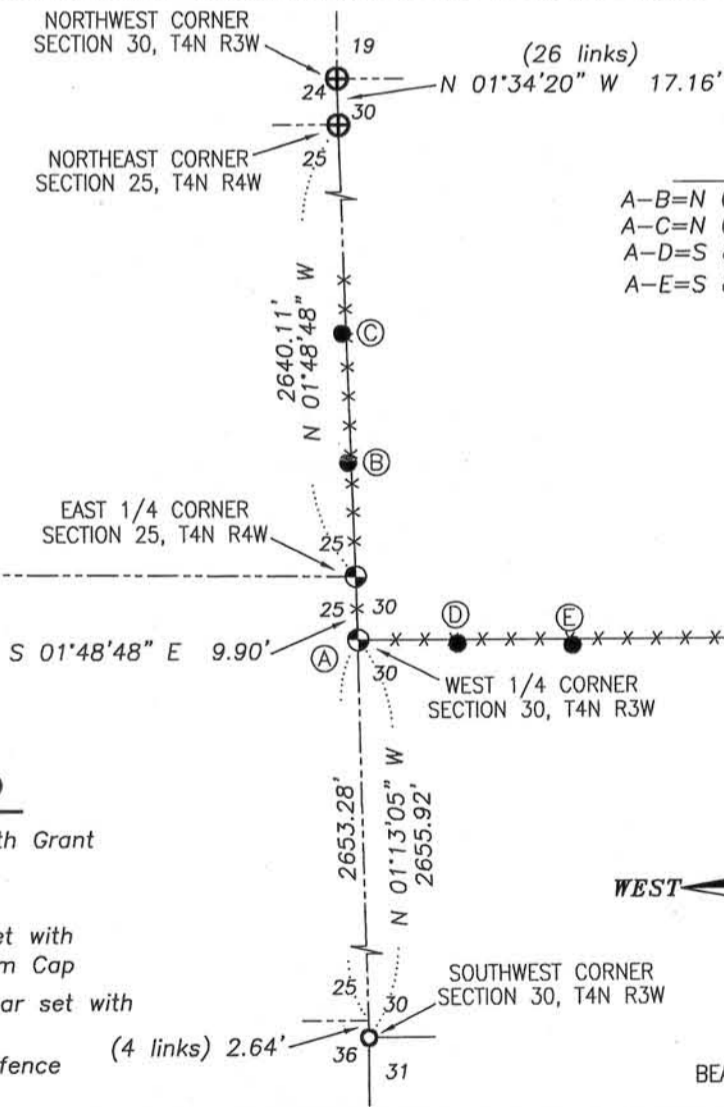
Corner was not set with original survey. A survey by Freeman in 1847, filed in Book A, Page 65, Grant County Surveys filed in the Grant County Tax Lister's Office established this corner. No other record was found for this corner.

DESCRIPTION OF CORNER EVIDENCE FOUND:

I found and accepted an existing fence corner at this location.
 I verified this location by E.D.M. and G.P.S. methods.

DESCRIPTION OF CORNER AND WITNESS MONUMENTS, references and accessories used to perpetuate the original or re-established location of this corner. Witnesses to corner location Bobby Sedgwick & Shelby Blindert

SKETCH:

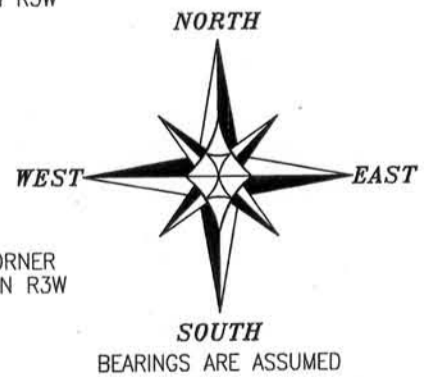


TABULATION

A-B=N	02°47'37" W	27.62'
A-C=N	02°34'38" W	47.70'
A-D=S	87°45'54" E	15.65'
A-E=S	88°25'42" E	33.55'

LEGEND

- ⊕ No. 8 rebar found with Grant County Aluminum Cap
- No. 6 rebar found
- ⊗ No. 8 x 30" rebar set with Grant County Aluminum Cap
- Number 4 x 24" Rebar set with red plastic "TIE" cap
- x-x- Approximate existing fence



SKETCH NOT TO SCALE



4211 HWY 81 E, LANCASTER, WI 53813
 PHONE: 608-723-6363 FAX: 608-723-6702

JOB NO: 12s069
 G:\T4NR4W\22
 H:\TIE\T4NR4W\100

FIELDBOOK: TDSR
 DRAWN BY: AJ AUSTIN
 CREW: BS-SB