

U.S. PUBLIC LAND SURVEY MONUMENT RECORD - GRANT COUNTY, WI

Section 36, Town 4 North Range 4 West, Town of Beetown

CERTIFICATE:

I, Aaron J. Austin, do hereby certify that the corner location on this record was determined by me and/or under my direct supervision and that this U.S. Public Land Survey Monument Record is correct and complete to the best of my knowledge and belief.

Dated this 20th day of December, 2013.

Aaron J. Austin
 Aaron J. Austin, S-2922



● = CORNER LOCATION

HISTORY OF CORNER ESTABLISHMENT:

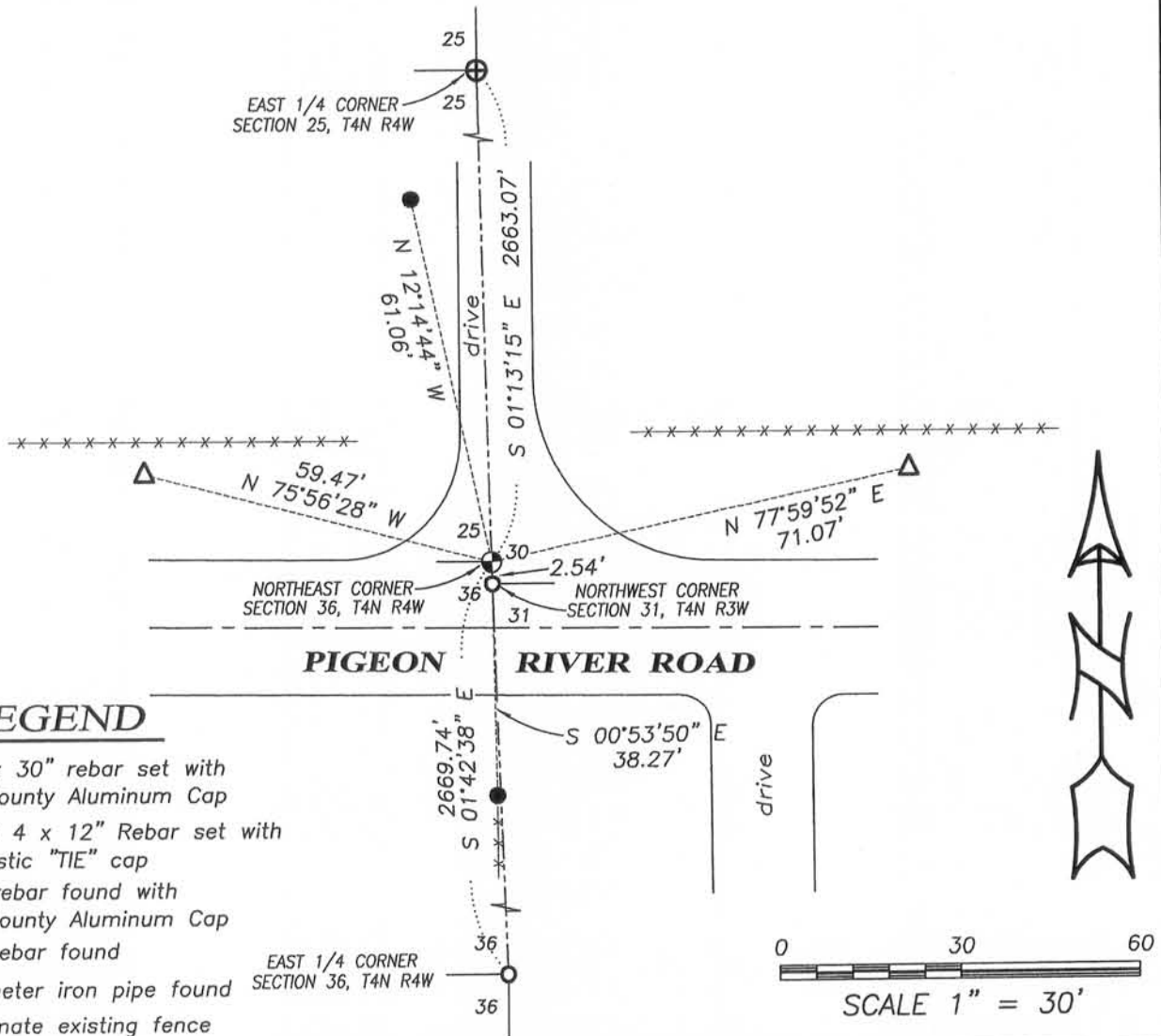
1832-Sibley set original corner
 1877-Barber found original corner, Book D, Page 8.

DESCRIPTION OF CORNER EVIDENCE FOUND:

I reset this corner by projecting from the East 1/4 corner of Section 36 through the Northwest corner of Section 31 at the recorded offset. I retraced the location this way to hold the controlling line of the East line of Section 36. I found 2 ties for the Northwest corner of Section 31 and set 2 more ties for this corner. I verified this location by E.D.M. and G.P.S. methods.

DESCRIPTION OF CORNER AND WITNESS MONUMENTS, references and accessories used to perpetuate the original or re-established location of this corner. Witnesses to corner location Shane Austin.

SKETCH:



LEGEND

- ⊕ No. 8 x 30" rebar set with Grant County Aluminum Cap
- Number 4 x 12" Rebar set with red plastic "TIE" cap
- ⊕ No. 8 rebar found with Grant County Aluminum Cap
- No. 6 rebar found
- △ 1" diameter iron pipe found
- x-x- Approximate existing fence



Austin Engineering LLC
 austinengineeringllc.com

4211 HWY 81 E, LANCASTER, WI 53813
 PHONE: 608-723-6363 FAX: 608-723-6702

JOB NO: 13s187
 G:\13s187
 H:\TIE\T4NR4W\101

FIELDBOOK: TDSR
 DRAWN BY: AJ AUSTIN
 CREW: SW AUSTIN

