

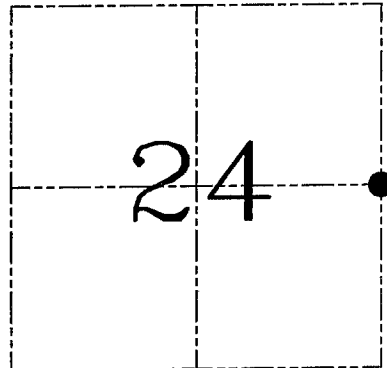
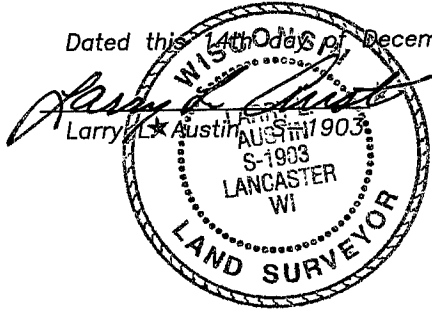
**U.S. PUBLIC LAND SURVEY MONUMENT RECORD - GRANT COUNTY, WI**

**Section 24, Town 4 North Range 4 West, Town of Beetown**

CERTIFICATE

I, Larry L. Austin, do hereby certify that the corner location on this record was determined by me and/or under my direct supervision and that this U.S. public land survey monument record is correct and complete to the best of my knowledge and belief.

Dated this 14th day of December, 2004



● = CORNER LOCATION

HISTORY OF CORNER ESTABLISHMENT

Corner was originally set in 1832 by Lyon. In 1844 Wiltse tied to the corner with no mention of monument. No other record of the corner was found.

DESCRIPTION OF CORNER EVIDENCE FOUND

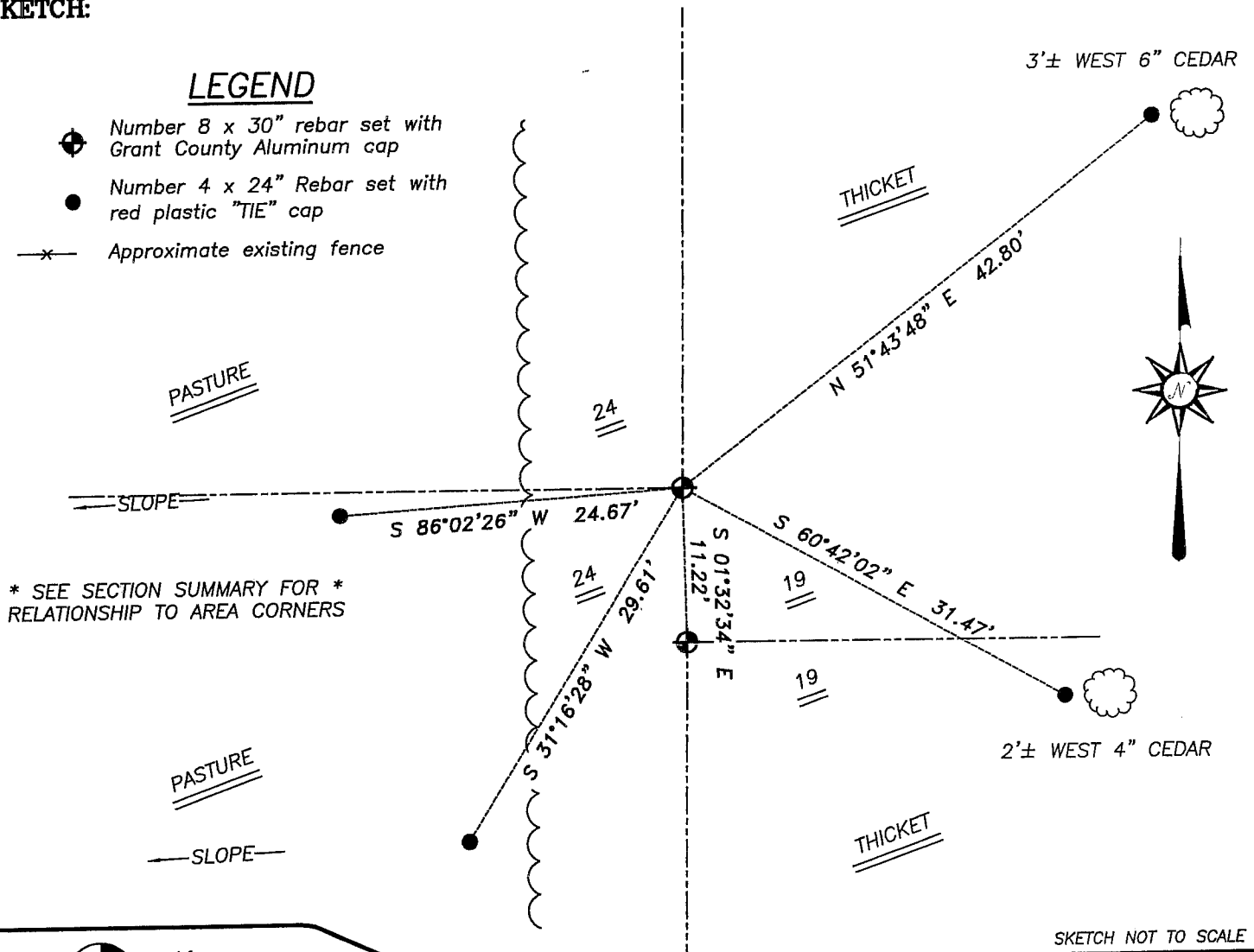
I found no evidence of the original corner. I reset the corner proportionately between the Northeast and Southeast corners of Section 24. Verified this location using EDM & GPS methods.

DESCRIPTION OF CORNER AND WITNESS MONUMENTS, references and accessories used to perpetuate the original or re-established location of this corner. Witnesses to corner location Bobby Sedgwick & Shelby Blindert & Brad Digman

**SKETCH:**

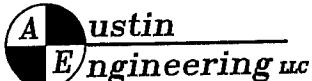
LEGEND

- Number 8 x 30" rebar set with Grant County Aluminum cap
- Number 4 x 24" Rebar set with red plastic "TIE" cap
- x— Approximate existing fence



\* SEE SECTION SUMMARY FOR \*  
RELATIONSHIP TO AREA CORNERS

SKETCH NOT TO SCALE



4211 HWY 81 E, LANCASTER, WI 53813  
PHONE 608-723-6363 FAX 608-723-6702

JOB NUMBER 04S249  
FIELDBOOK: TSDR, 2417  
G:\T4NR3W\17  
H:\TIE\T4NR4W\80

DRAWN BY: SW AUSTIN  
APPROVED: LL AUSTIN

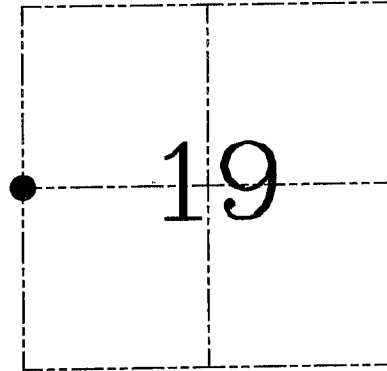
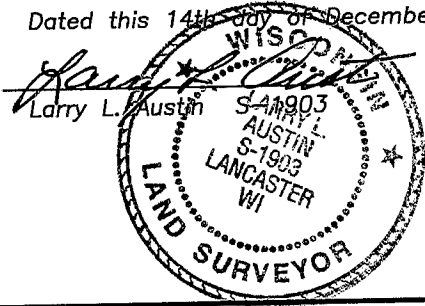
**U.S. PUBLIC LAND SURVEY MONUMENT RECORD – GRANT COUNTY, WI**

**Section 19, Town 4 North Range 3 West, Town of South Lancaster**

CERTIFICATE

I, Larry L. Austin, do hereby certify that the corner location on this record was determined by me and/or under my direct supervision and that this U.S. public land survey monument record is correct and complete to the best of my knowledge and belief.

Dated this 14th day of December, 2004



● = CORNER LOCATION

HISTORY OF CORNER ESTABLISHMENT

Corner was never originally set. In 1844 Wiltse set a bearing to this corner. No other record of the corner was found.

DESCRIPTION OF CORNER EVIDENCE FOUND

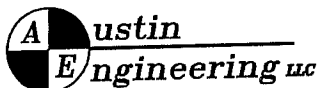
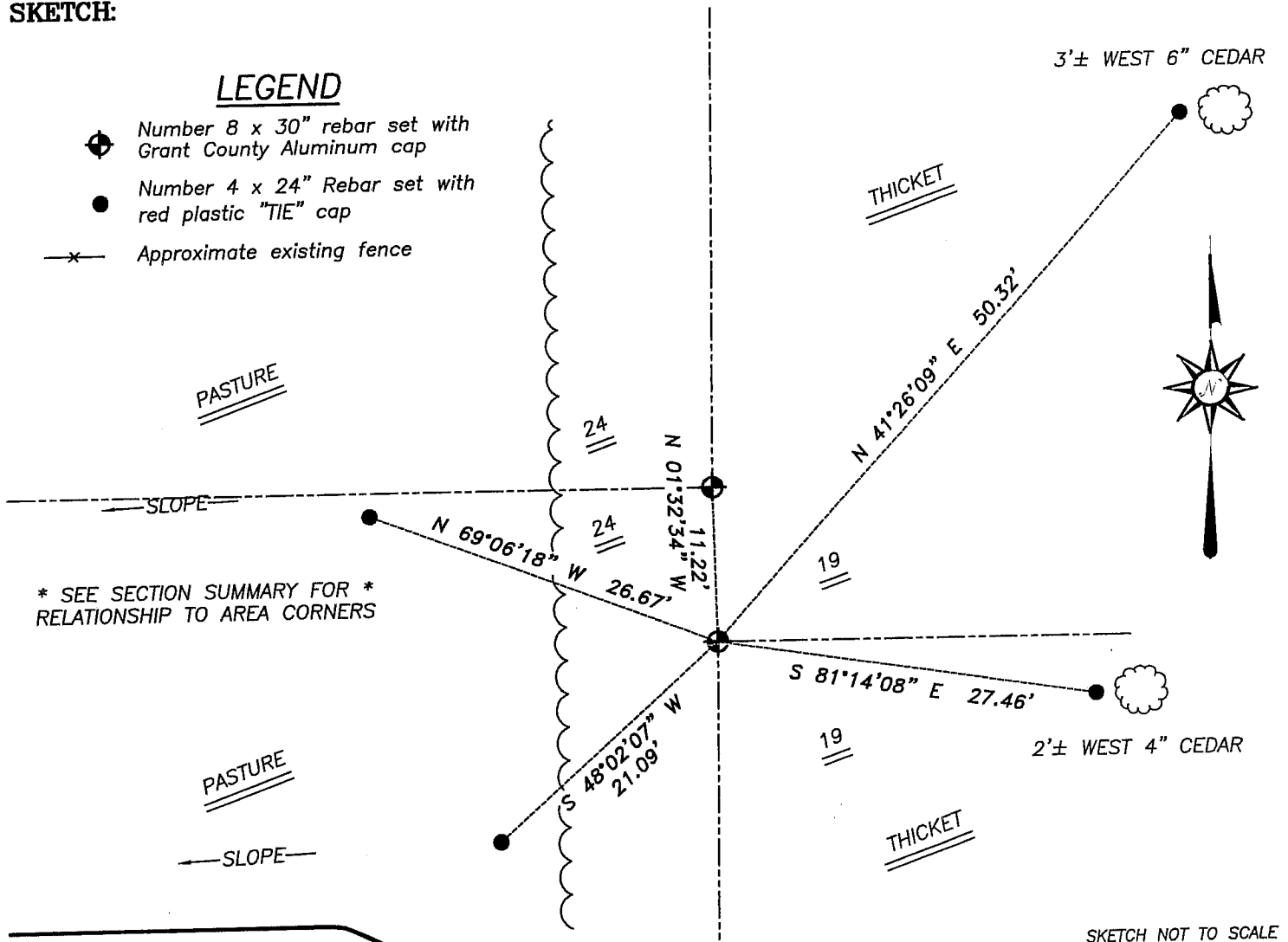
I was unable to locate the Wiltse corner. I reset the corner at the proportioned offset from the East 1/4 corner of Section 24. Verified this location using EDM & GPS methods.

DESCRIPTION OF CORNER AND WITNESS MONUMENTS, references and accessories used to perpetuate the original or re-established location of this corner. Witnesses to corner location Bobby Sedgwick & Shelby Blindert & Brad Digman

**SKETCH:**

LEGEND

- Number 8 x 30" rebar set with Grant County Aluminum cap
- Number 4 x 24" Rebar set with red plastic "TIE" cap
- x— Approximate existing fence



4211 HWY 81 E, LANCASTER, WI 53813  
PHONE 608-723-6363 FAX 608-723-6702

JOB NUMBER 04S249  
FIELDBOOK: TSDR, 2417  
G:\T4NR3W\17  
H:\TIE\T4NR3W\74

DRAWN BY: SW AUSTIN  
APPROVED: LL AUSTIN