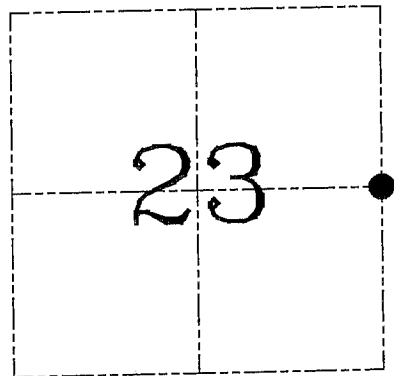
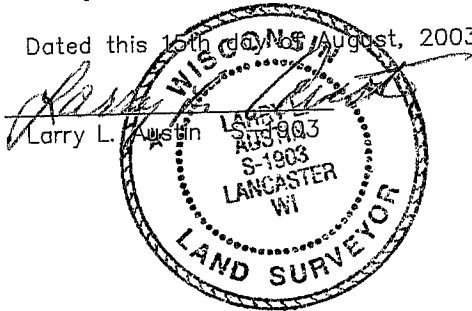


U.S. PUBLIC LAND SURVEY MONUMENT RECORD – GRANT COUNTY, WI
Section 23, Town 4 North Range 4 West, Town of Beetown

CERTIFICATE

I, Larry L. Austin, do hereby certify that the corner location on this record was determined by me and/or under my direct supervision and that this U.S. public land survey monument record is correct and complete to the best of my knowledge and belief.

Dated this 15th day of August, 2003



● = CORNER LOCATION

HISTORY OF CORNER ESTABLISHMENT

Corner was originally set in 1833 by Clark. In 1842 Freeman was at the corner. In 1877 Barber set new Bearing trees to the corner. No other record of the corner was found.

DESCRIPTION OF CORNER EVIDENCE FOUND

I set the corner based on local occupational evidence. Verified this location using EDM & GPS methods.

DESCRIPTION OF CORNER AND WITNESS MONUMENTS, references and accessories used to perpetuate the original or re-established location of this corner. Witnesses to corner location Bobby Sedgwick & Shelby Blindert & Brad Digman

SKETCH:

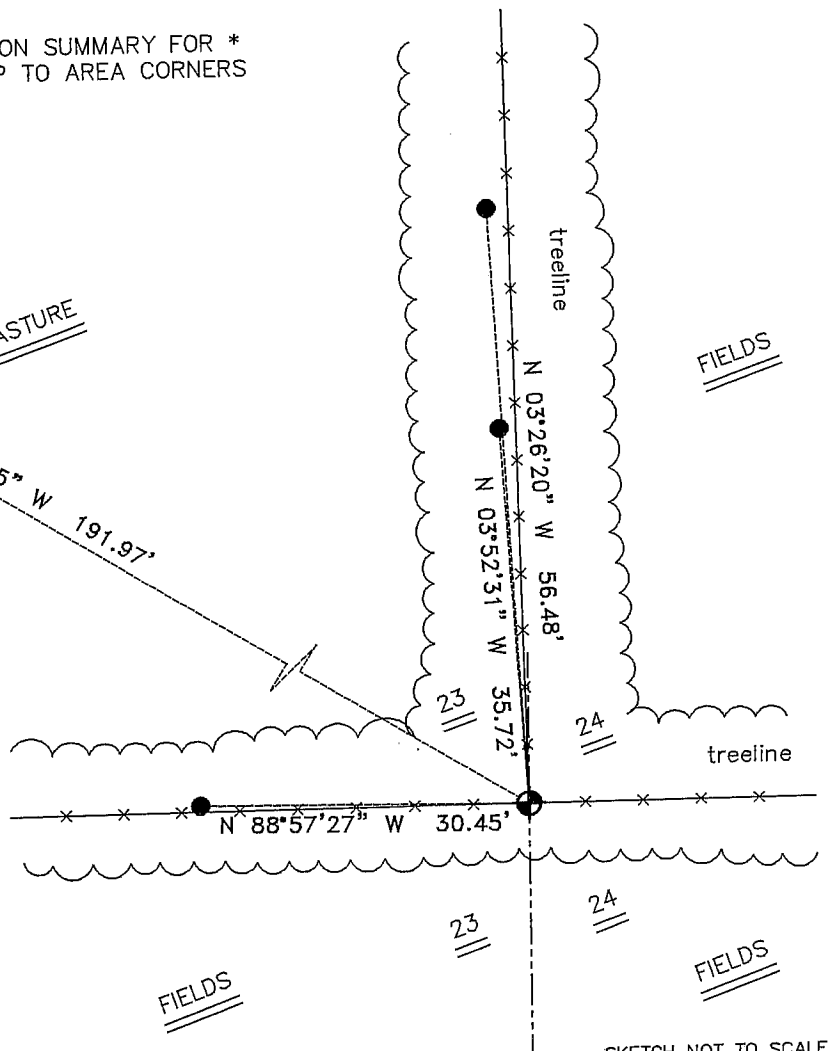
* SEE SECTION SUMMARY FOR *
 RELATIONSHIP TO AREA CORNERS

2'± EAST LONE 24" TREE



LEGEND

- Number 8 x 30" rebar set with Grant County Aluminum Cap
- Number 4 x 24" Rebar set with red plastic "TIE" cap
- x— Approximate existing fence



SKETCH NOT TO SCALE

AUSTIN ENGINEERING, LLC

4211 HWY 81 EAST, LANCASTER, WI 53813
 PHONE 608-723-6363 FAX 608-723-6702

FIELDBOOK: TDS RNGR, 2311
 G: \T4NR4W\22
 H: \TIE\T4NR4W\79
 JOB NUMBER 03S197

DRAWN BY: SW AUSTIN
 APPROVED: LL AUSTIN

CORNER NUMBER 79