

# U.S. PUBLIC LAND SURVEY MONUMENT RECORD - GRANT COUNTY, WI

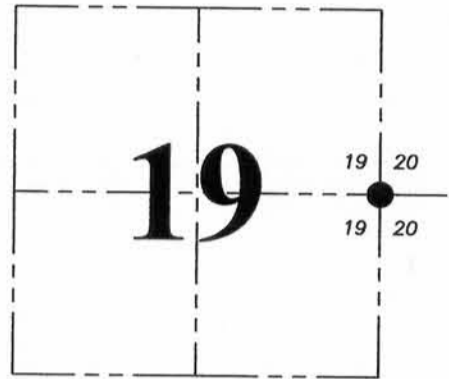
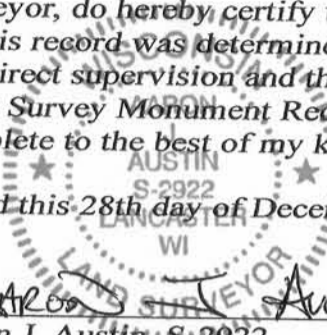
Section 19, Town 4 North Range 4 West, Town of Beetown

**CERTIFICATE:**

I, Aaron J. Austin, Wisconsin Professional Land Surveyor, do hereby certify that the corner location on this record was determined by me and/or under my direct supervision and that this U.S. Public Land Survey Monument Record is correct and complete to the best of my knowledge and belief.

Dated this 28th day of December, 2015.

*Aaron J. Austin*  
 Aaron J. Austin, S-2922



● = CORNER LOCATION

HISTORY OF CORNER ESTABLISHMENT:

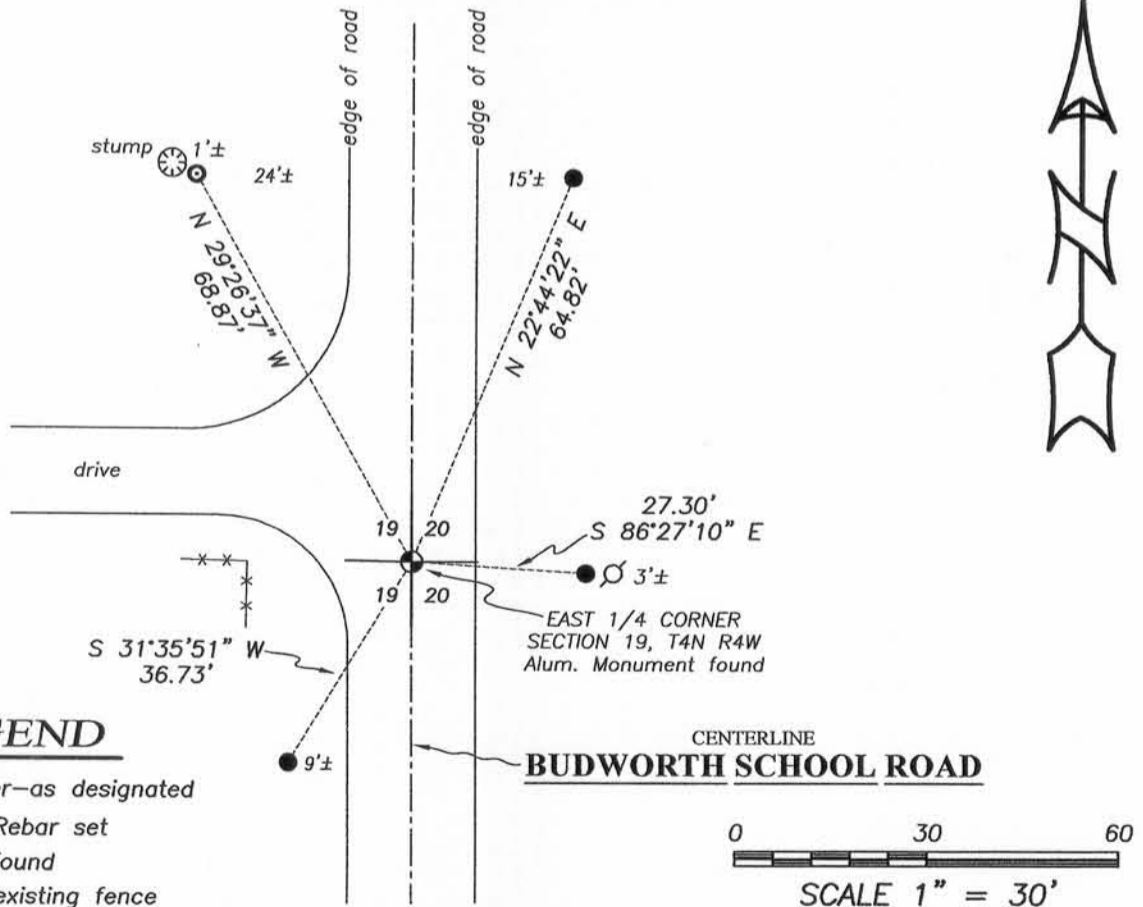
- 1832-Clark set original corner.
- 1840-Freeman tied to the corner on a Survey in Book A, Page 49.
- 1841-Freeman tied to the corner on Surveys filed in Book A, Pages 72 and 99.
- 1843-Wiltse tied to the corner on a Survey filed in Book A, Page 155.
- 1844-Wiltse tied to the corner on a Survey filed in Book A, Page 182.
- 1992-1993 F. Curtis Crook set an Aluminum Monument with a Wisconsin Dept. of Transportation Aluminum Cap.
- 1999-Peter Wood prepared a U.S. Land Survey Monument Record for the corner.
- 1994-Larry Austin tied to the corner on a Survey filed in Book T, Page 122.
- 2000-Larry Austin prepared a Grant County Certified Land Corner record.
- 2000-Larry Austin tied to the corner on Certified Survey Map No. 692.
- 2013-Kenneth Buesing tied to the corner on Certified Survey Map No. 1669.

DESCRIPTION OF CORNER EVIDENCE FOUND:

I found a 3/4" Rebar in place and set 4 new witness corners after I verified it's location with E.D.M. and G.P.S. methods.

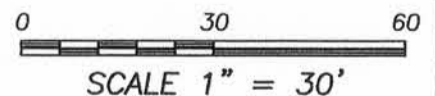
DESCRIPTION OF CORNER AND WITNESS MONUMENTS, references and accessories used to perpetuate the original or re-established location of this corner. Witnesses to corner location Shane Austin.

SKETCH:



**LEGEND**

- ⊙ Section Corner—as designated
- 1/2" x 12" Rebar set
- ⊙ 1/2" Rebar found
- x-x- Approximate existing fence



**Austin Engineering LLC**  
 austinengineeringllc.com

4211 HWY 81 E, LANCASTER, WI 53813  
 PHONE: 608-723-6363 FAX: 608-723-6702

JOB NO: 15s231  
 H:CRD\15s231  
 H:\TIE\T4NR4W\75

FIELDBOOK: TDSR  
 DRAWN BY: AJ AUSTIN  
 CREW: SW AUSTIN

# GRANT COUNTY CERTIFIED LAND CORNER

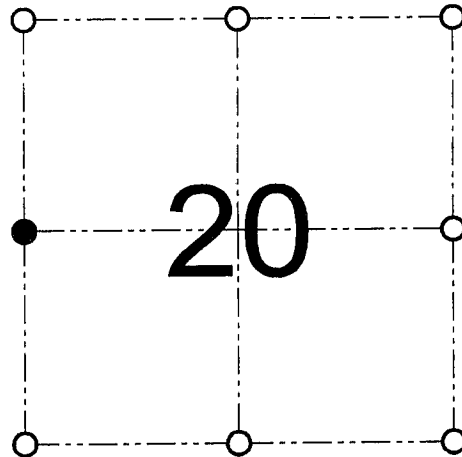
CORNER NUMBER 75

**CERTIFICATE:**

I, Larry L. Austin, do hereby certify that on the 23rd day of August, 2000, I found evidence of the West 1/4 corner of Section 20, Town 4 North, Range 4 West, of the 4th Principal Meridian, and I re-established said corner according to the Wisconsin statutes as shown and described hereon.

Dated this 29th day of December, 2000

*Larry L. Austin*  
Larry L. Austin S-1903



● = CORNER LOCATION

WEST 1/4 CORNER OF  
SECTION 20, T 4 N R 4 W  
TOWN OF BEETOWN

**HISTORY OF ORIGINAL CORNER ESTABLISHMENT:**

Corner was originally set in 1833 by Robert Clark. In 1843 Wiltse found the original corner. In 1992 Curtis Crook set an Aluminum monument. In 1999 Peter Wood filed a tiesheet on the Aluminum monument.

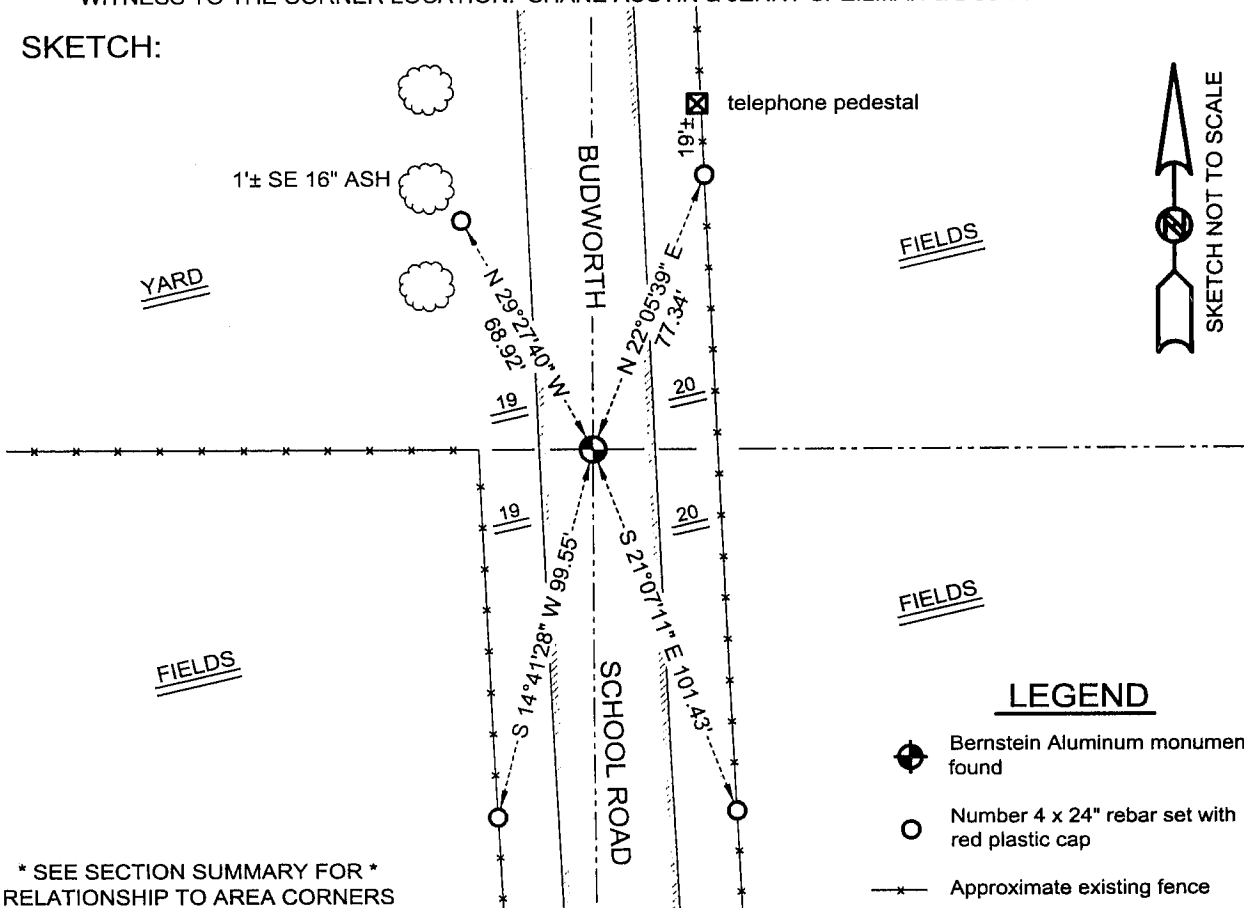
**DESCRIPTION OF CORNER EVIDENCE FOUND:**

I found the existing Aluminum monument and accepted it's location. I retied the corner so it would meet the minimum property survey standards. Verified this location using EDM & GPS methods.

**DESCRIPTION OF CORNER AND WITNESS MONUMENTS, references and accessories used to perpetuate the original or re-established location of this corner**

WITNESS TO THE CORNER LOCATION: SHANE AUSTIN & JERRY SPEILMAN & BOBBY SEDGWICK

**SKETCH:**



\* SEE SECTION SUMMARY FOR \*  
RELATIONSHIP TO AREA CORNERS

**AUSTIN ENGINEERING, LLC**  
4211 HWY 81 E, LANCASTER, WI 53813  
PHONE 608-723-6363 FAX 608-723-6702

FIELDBOOK: SDR33, 2020  
G:\T4NR4W\20  
C:\SC14\SWA\TIE\T4NR4W\75

DRAWN BY: SW AUSTIN  
APPROVED: LL AUSTIN  
CREW: BS - SB - SA - JS

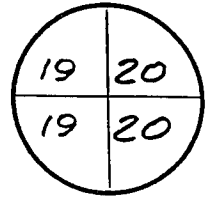
PUBLIC LAND SURVEY MONUMENT RECORD

Wisconsin Department of Transportation

1291 96 (Replaces ED716)

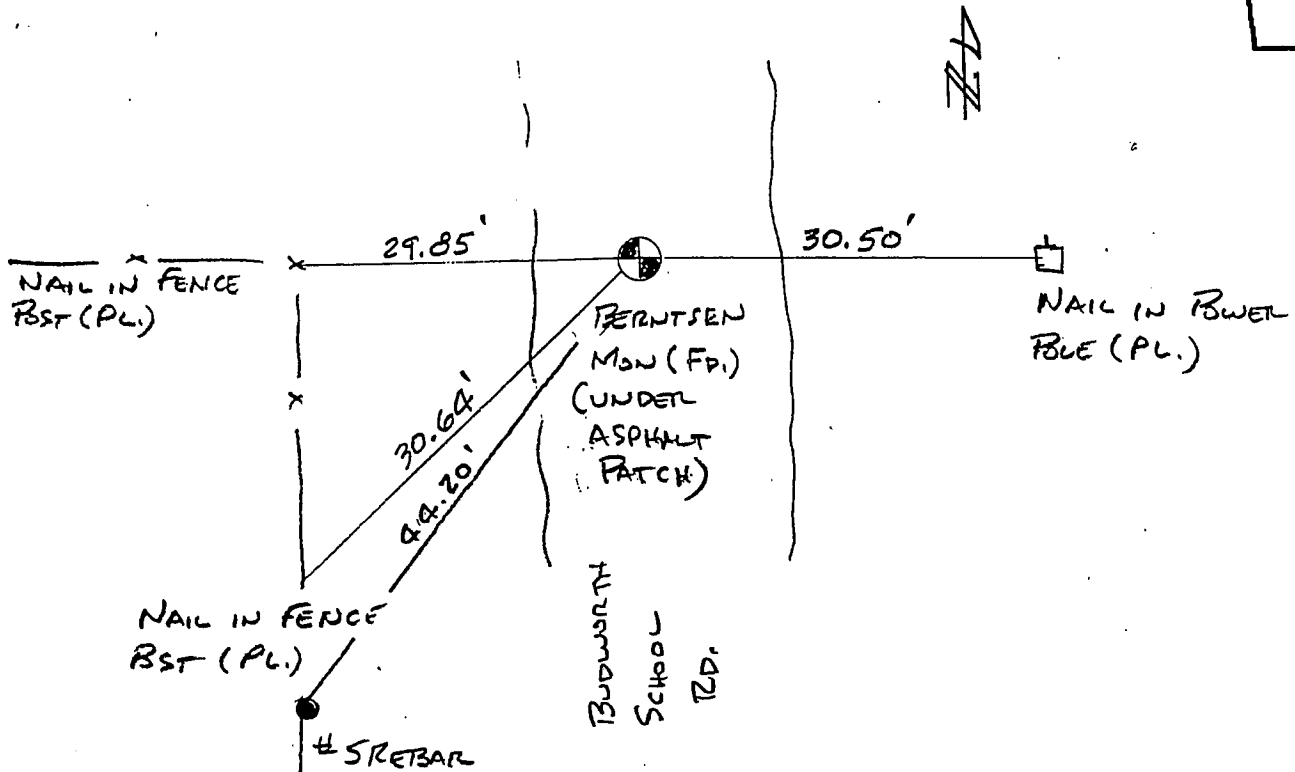
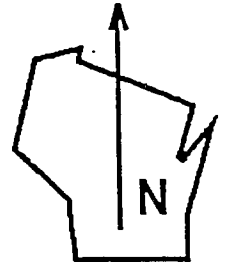
T. 4 N. - R. 4 W.  
4th Principal Meridian  
Corner \_\_\_\_\_

County Name <b>GRANT</b>		Name of Township / City / Village (Circle One) <b>BEE TOWN</b>	
Surveyor Name <b>PETER WOOD / STRAND ASSOC.</b>			
Address, City, State, Zip Code <b>910 W. WINGRA DR. MADISON, WI 53715</b>			
X (Easting) <b>1,732,062.06</b>	Y (Northing) <b>295,520.28</b>	Latitude	Longitude
Project ID <b>5215-02-21</b>		Coordinate ID	



HORIZONTAL DATUM		UNITS	COORDINATE SYSTEM
<input type="checkbox"/> NAD 27	<input checked="" type="checkbox"/> English	<input type="checkbox"/> Geodetic	<input type="checkbox"/> State Plane <u>SOUTH</u> Zone
<input checked="" type="checkbox"/> NAD 83 (91)	<input type="checkbox"/> Metric	<input type="checkbox"/> County _____	

Location Diagram, showing corner identification name, bearing and distance references to at least four witness monuments, fence or occupational lines, centerlines of roads, and other site details for reference. Also, show the bearings and distances between the witness monuments.



Indicate fd. = found or pl. = placed in the diagram above  
Bearings used in the location sketch and basis for monument location are assumed, unless as noted.  
Monumentation Legend / Description of Corner and Witness Monuments:

If applicable, show any discrepancy between the location of the corner as restored or re-established and the location of that corner as previously restored or re-established by bearing and distance. Also, show the bearings and distances between the previous corner and at least two of the witness monuments.  
See reverse.

Basis for Monument Location

1. Describe any record evidence, monument evidence, occupational evidence or any other material evidence including travel measurements that you considered, and whether the monument was found or placed. Explain below, be specific, and attach a separate sheet if necessary.
2. Was the corner:
  - a) found perpetuated,
  - b) restored through acceptance of obliterated evidence,
  - c) relocated by witness testimony, or
  - d) accepted as a remonumented corner of record and maintained with additional monumentation?
3. Was the corner re-established through lost corner proportionate methods? If so, show the method, including the directions and distances to other public land survey corners used as evidence or used in determining the corner location.

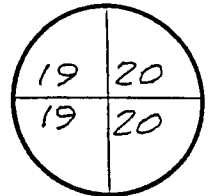
Please Type or Print

This corner's location was determined by F. Curtis Crook in the winter of 1992-1993 while engaged as a subconsultant for Strand Associates, Inc. This restoration work was done in conjunction with the R/W plat developed by Strand Associates, Inc. for Wisconsin DOT project I.D. 5215-02-21, STH 81 from CTH Y to STH 35. Ties were established by Strand Associates, Inc. to found monuments and/or coordinate positions set or determined by Mr. Crook. It is believed these monuments were set at the best available evidence of the corner location. Contact to Mr. Crook can be made at:

Box 68  
Readstown, WI 54652

TEL: 608-629-5429

T. 4 N.-R. 4 W  
4th Principal Meridian  
Corner \_\_\_\_\_



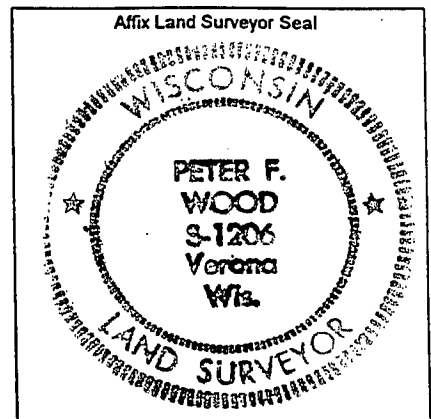
Certification I, PETER F. WOOD

(type or print name) certify that the corner location shown on this record was determined by me or under my direction and control and that this U.S. Public Land Survey Monument Record is correct and complete to the best of my knowledge and belief, in accordance with Chapter A-E 7.08 of the Wisconsin Administrative Code.

Section Control Data Sheets have been filed in the County Surveyor's office, showing final measurements by direction and distance between all remonumented corners. Section Control Information is referenced by the following:

Date <u>11-30-99</u>	Project ID <u>5215-02-21</u>	Sheet(s)
-------------------------	---------------------------------	----------

X *Peter F. Wood* 5-1206 11-30-99  
(Registered Land Surveyor Signature and Number) (Date)



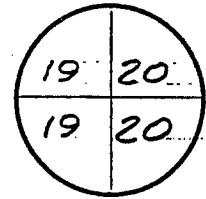
U.S. PUBLIC LAND SURVEY MONUMENT RECORD

Wisconsin Department of Transportation

DT1291 96 (Replaces ED716)

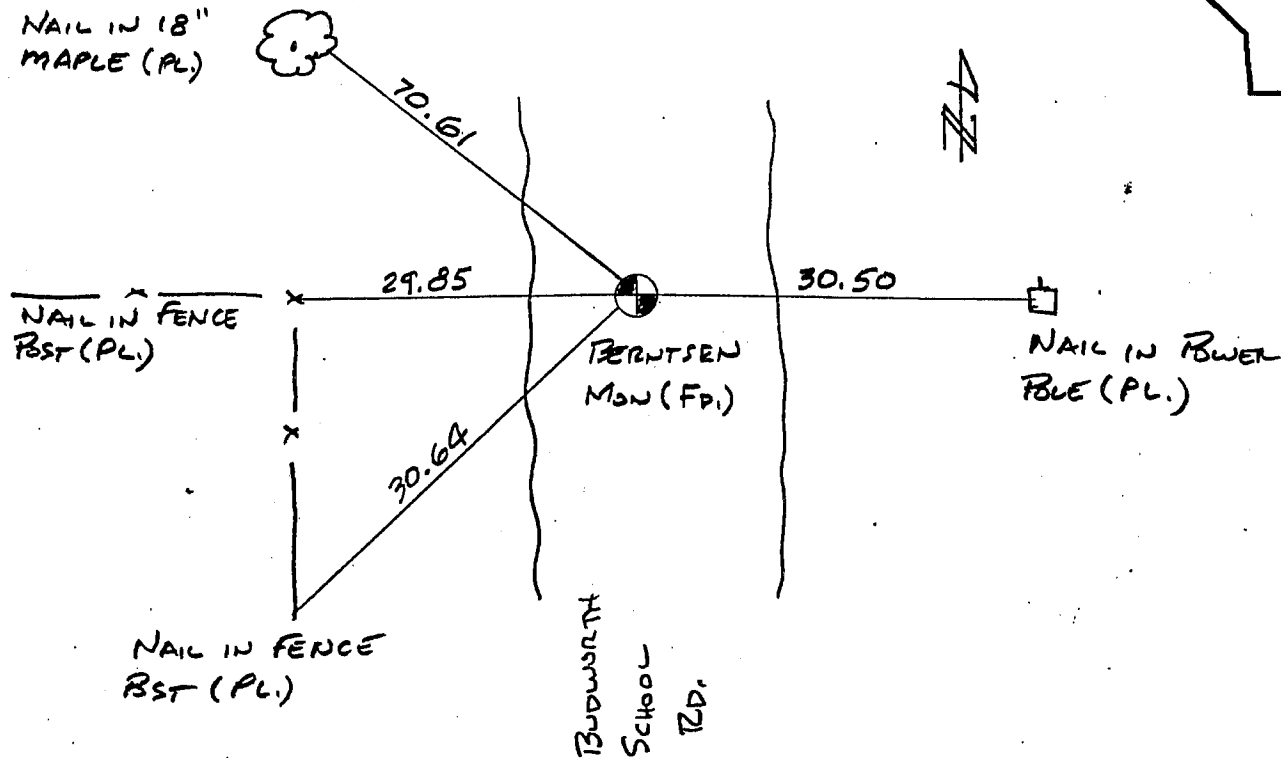
T. 4 N. - R. 4 W.  
4th Principal Meridian  
Corner \_\_\_\_\_

County Name <u>GRANT</u>		Name of Township / City / Village (Circle One) <u>BEE TOWN</u>	
Surveyor Name <u>PETER WOOD / STRAND ASSOC.</u>			
Address, City, State, Zip Code <u>910 W. WINGRA DR. MADISON, WI 53715</u>			
X (Easting)	Y (Northing)	Latitude	Longitude
Project ID <u>5215-02-21</u>		Coordinate ID	



HORIZONTAL DATUM		UNITS	COORDINATE SYSTEM
<input type="checkbox"/> NAD 27	<input checked="" type="checkbox"/> English	<input type="checkbox"/> Geodetic	<input type="checkbox"/> State Plane <u>SOUTH</u> Zone
<input checked="" type="checkbox"/> NAD 83 (91)	<input type="checkbox"/> Metric	<input type="checkbox"/> County _____	

Location Diagram, showing corner identification name, bearing and distance references to at least four witness monuments, fence or occupational lines, centerlines of roads, and other site details for reference. Also, show the bearings and distances between the witness monuments.



Indicate fd. = found or pl. = placed in the diagram above  
Bearings used in the original sketch for monument location are assumed, unless as noted.  
Monumentation Legend / Description of Corner and Witness Monuments:

A Berntsen aluminum monument with a Wisconsin DOT cap

If applicable, show any discrepancy between the location of the corner as restored or re-established and the location of that corner as previously restored or re-established by bearing and distance. Also, show the bearings and distances between the previous corner and at least two of the witness monuments.

See reverse.

Basis for Monument Location

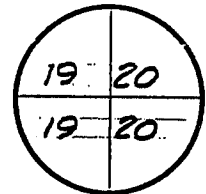
1. Describe any record evidence, monument evidence, occupational evidence or any other material evidence including traverse measurements that you considered, and whether the monument was found or placed. Explain below, be specific, and attach a separate sheet if necessary.
2. Was the corner:
  - a) found perpetuated,
  - b) restored through acceptance of obliterated evidence,
  - c) relocated by witness testimony, or
  - d) accepted as a remonumented corner of record and maintained with additional monumentation?
3. Was the corner re-established through lost corner proportionate methods? If so, show the method, including the directions and distances to other public land survey corners used as evidence or used in determining the corner location.

Please Type or Print

SET TIES TO EXISTING MONUMENT AFTER BEING NOTIFIED  
 BY BEETOWN TOWNSHIP ROAD WORKER THAT ROAD REPAIRS  
 MAY DISTURB THIS MONUMENT.

TIES TAKEN MAY 15, 1997 TO UNDISTURBED MONUMENT

T. 4 N.-R. 4 W.  
 4th Principal Meridian  
 Corner \_\_\_\_\_



Certification I, PETER F. WOOD

(type or print name) certify that the corner location shown on this record was determined by me or under my direction and control and that this U.S. Public Land Survey Monument Record is correct and complete to the best of my knowledge and belief, in accordance with Chapter A-E 7.08 of the Wisconsin Administrative Code.

Section Control Data Sheets have been filed in the County Surveyor's office, showing final measurements by direction and distance between all remonumented corners. Section Control Information is referenced by the following:

Date	Project ID	Sheet(s)
6/10/97		

X [Signature] 6/10/97  
 (Registered Land Surveyor Signature and Number) (Date)

