

# U.S. PUBLIC LAND SURVEY MONUMENT RECORD

Wisconsin Department of Transportation

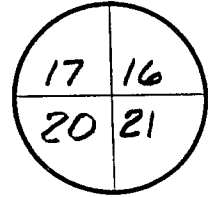
DT1291 96 (Replaces ED716)

T. 4 N. - R. 4 W.

4th Principal Meridian

Corner \_\_\_\_\_

County Name <b>GRANT</b>		Name of Township / City / Village (Circle One) <b>BEETOWN</b>	
Surveyor Name <b>PETER F. WOOD / STRAND ASSOC.</b>			
Address, City, State, Zip Code <b>910 W. WINGRA DRIVE MADISON, WI 53715</b>			
X (Easting) <b>1,737,234.74</b>	Y (Northing) <b>298,029.26</b>	Latitude	Longitude
Project ID <b>5215-02-21</b>		Coordinate ID	



**HORIZONTAL DATUM**

- NAD 27
- NAD 83 (91)

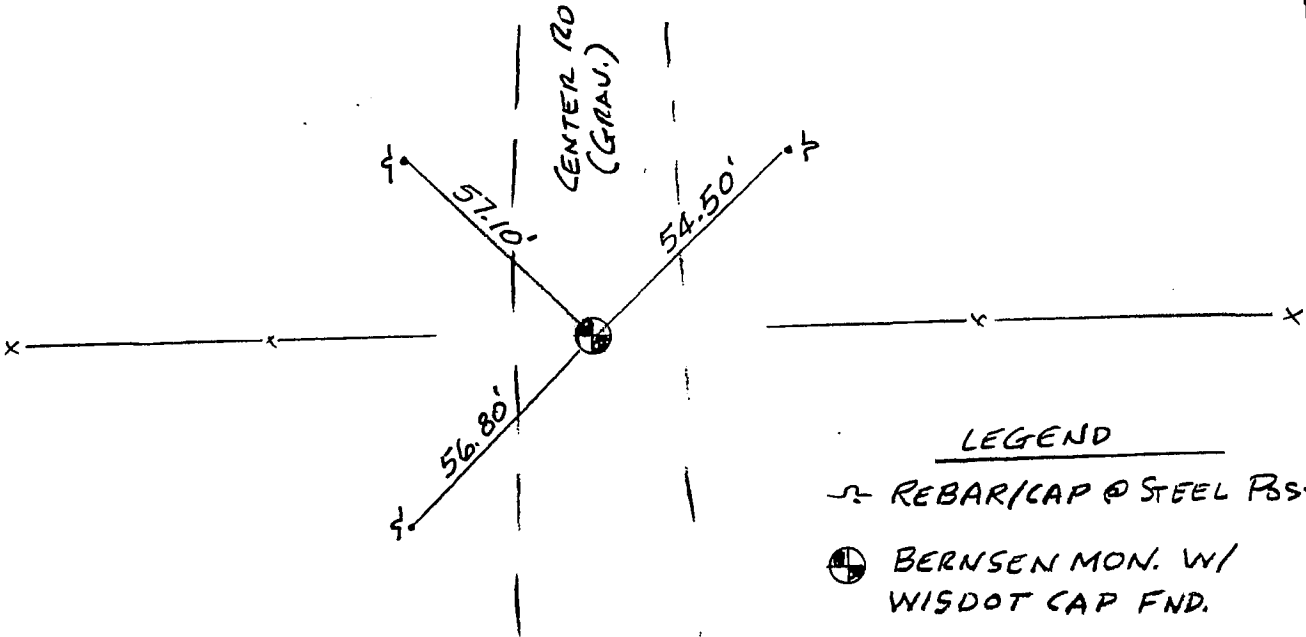
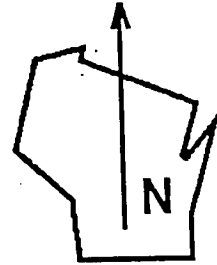
**UNITS**

- English
- Metric

**COORDINATE SYSTEM**

- Geodetic
- State Plane SOUTH Zone
- County \_\_\_\_\_

Location Diagram, showing corner identification name, bearing and distance references to at least four witness monuments, fence or occupational lines, centerlines of roads, and other site details for reference. Also, show the bearings and distances between the witness monuments.



Indicate fd. = found or pl. = placed in the diagram above  
 Bearings used in the location sketch and basis for monument location are assumed, unless as noted.  
 Monumentation Legend / Description of Corner and Witness Monuments:

If applicable, show any discrepancy between the location of the corner as restored or re-established and the location of that corner as previously restored or re-established by bearing and distance. Also, show the bearings and distances between the previous corner and at least two of the witness monuments. See revers

Basis for Monument Location

1. Describe any record evidence, monument evidence, occupational evidence or any other material evidence including traverse measurements that you considered, and whether the monument was found or placed. Explain below, be specific, and attach a separate sheet if necessary.
2. Was the corner:
  - a) found perpetuated,
  - b) restored through acceptance of obliterated evidence,
  - c) relocated by witness testimony, or
  - d) accepted as a remonumented corner of record and maintained with additional monumentation?
3. Was the corner re-established through lost corner proportionate methods? If so, show the method, including the directions and distances to other public land survey corners used as evidence or used in determining the corner location.

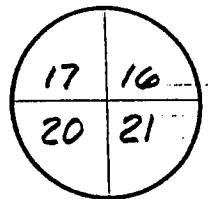
Please Type or Print

This corner's location was determined by F. Curtis Crook in the winter of 1992-1993 while engaged as a subconsultant for Strand Associates, Inc. This restoration work was done in conjunction with the R/W plat developed by Strand Associates, Inc. for Wisconsin DOT project I.D. 5215-02-21, STH 81 from CTH Y to STH 35. Ties were established by Strand Associates, Inc. to found monuments and/or coordinate positions set or determined by Mr. Crook. It is believed these monuments were set at the best available evidence of the corner location. Contact to Mr. Crook can be made at:

Box 68  
Readstown, WI 54652

TEL: 608-629-5429

T. 4 N.-R. 4 W.  
4th Principal Meridian  
Corner \_\_\_\_\_



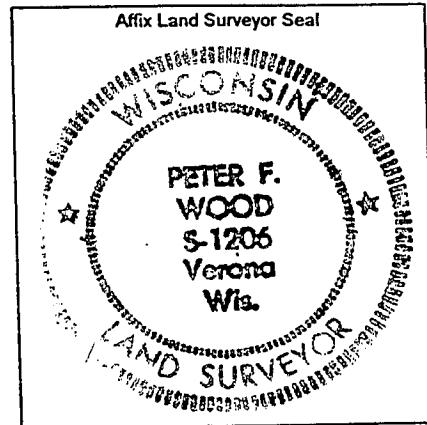
Certification I, PETER F. WOOD

(type or print name) certify that the corner location shown on this record was determined by me or under my direction and control and that this U.S. Public Land Survey Monument Record is correct and complete to the best of my knowledge and belief, in accordance with Chapter A-E 7.08 of the Wisconsin Administrative Code.

Section Control Data Sheets have been filed in the County Surveyor's office, showing final measurements by direction and distance between all remonumented corners. Section Control Information is referenced by the following:

Date	Project ID	Sheet(s)
11-30-99	5215-02-21	

X *Peter F. Wood* S-1206 11-30-99  
(Registered Land Surveyor Signature and Number) (Date)

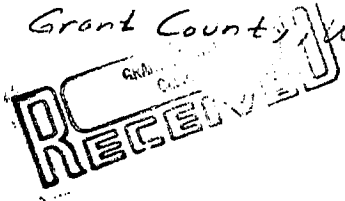


# U. S. PUBLIC LAND SURVEY MONUMENT RECORD

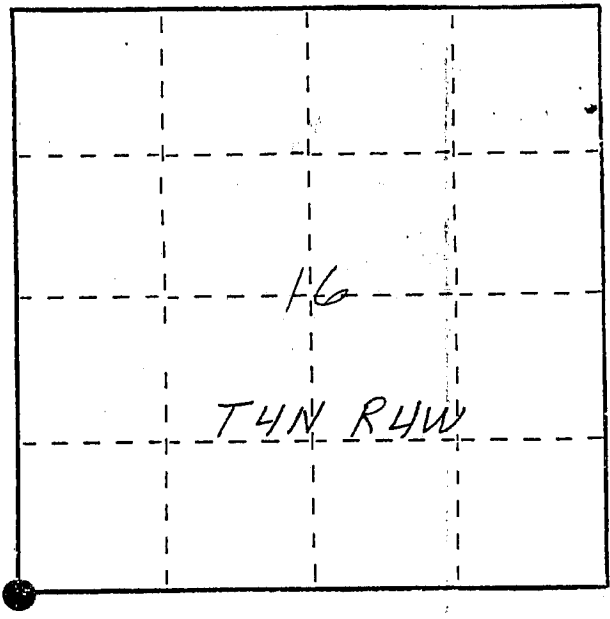
**INSTRUCTIONS:** This record shall show the location of the corner and shall include all of the following nine elements (a through i).

- (a) Identify the corner by reference to the U.S. public land survey system.
- = Corner monument restored.

SW corner section 16  
 T4N R4W of the  
 4th P.M.  
 Town of Becktown  
 Grant County, Wisconsin



MAR 2 1988

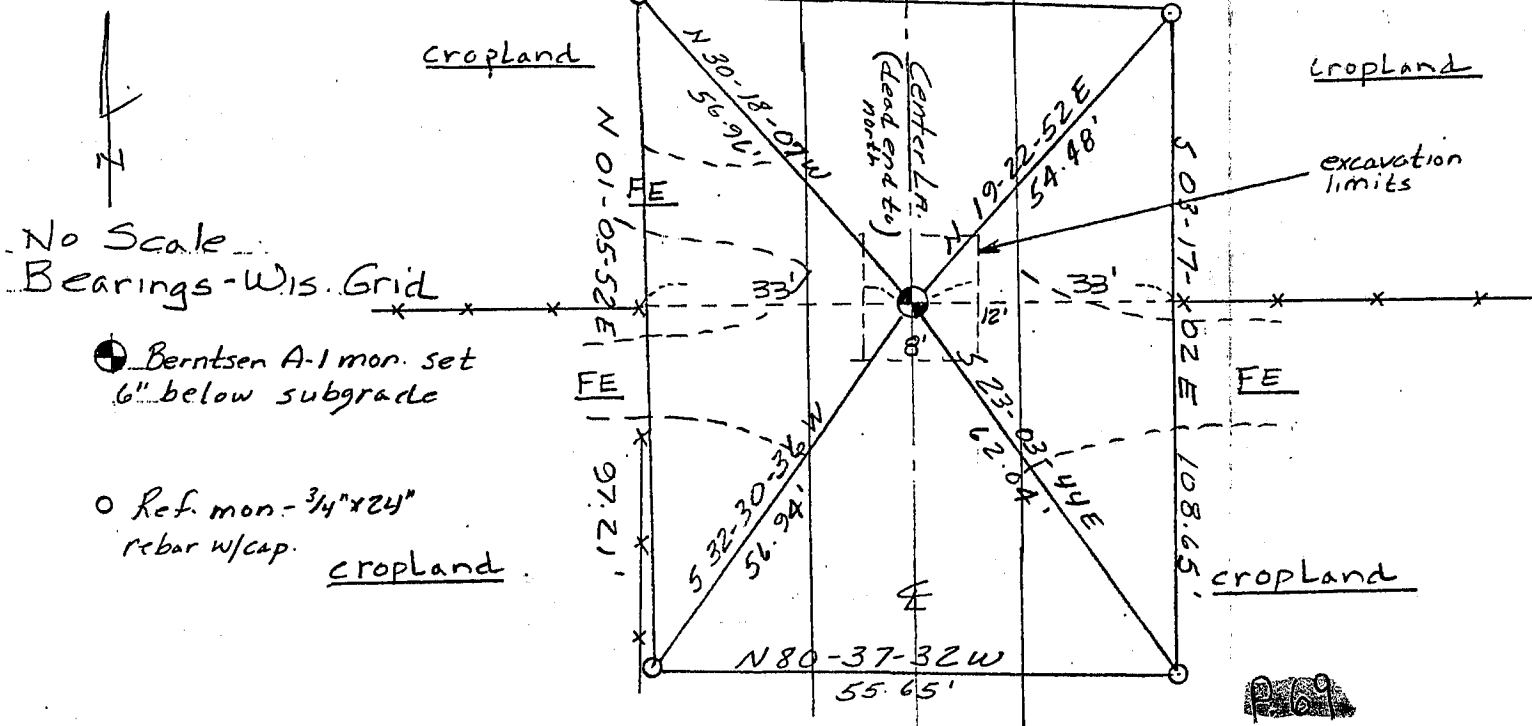


- (b) Describe any record evidence, monument evidence, occupational evidence, testimonial evidence or any other material evidence you considered, and whether the monument was found or placed.

Site was excavated. No evidence of corner was found.  
 Monument was set at E of road and at a 66' fence line split. Location agrees with other corners and evidence in the section.

- (c) In the plan view drawing below, provide reference ties to at least 4 witness monuments, or, if the location is within a municipality, to at least 2 witness monuments. (Witness monuments shall be made of concrete, natural stone, iron or other equally durable material, ~~except wood.~~) Describe witness monuments.

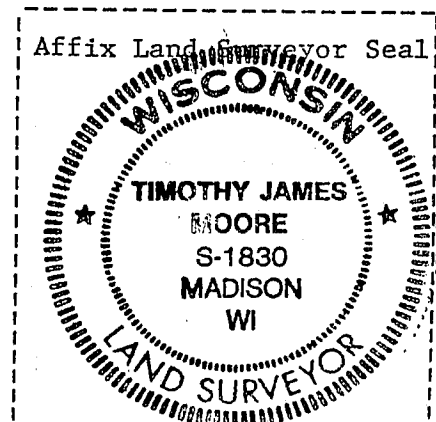
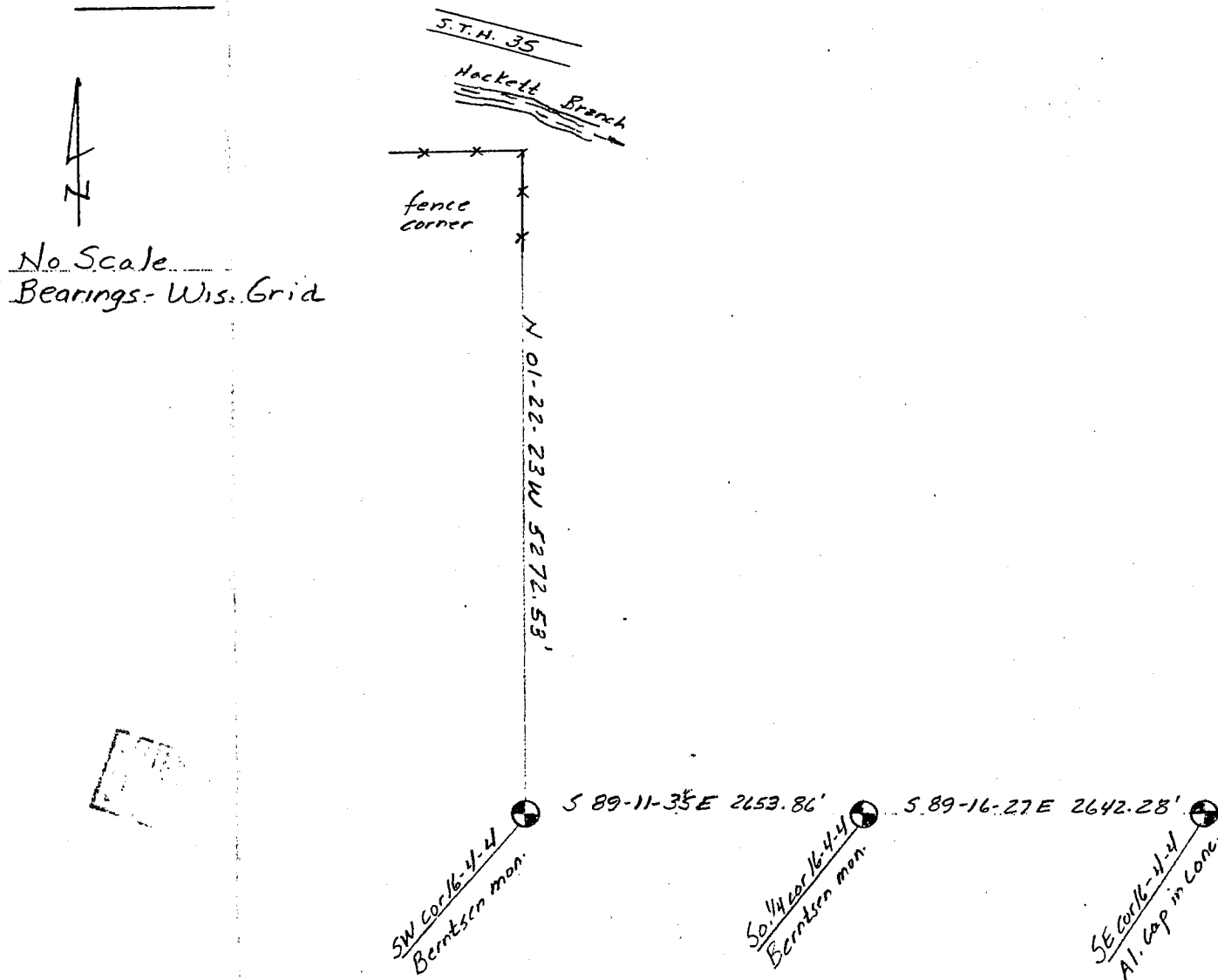
- (d) Show a plan view drawing depicting the relevant ties which is sufficient in detail to enable accurate relocation of the corner monument if the corner monument is disturbed. Indicate north.



Describe any material discrepancy between the location of the corner as restored or reestablished and the location of that corner as previously restored or reestablished by distance and direction. Show the discrepancy on the plan view drawing under (d), above. Show the distances between the corner as previously restored or reestablished and (1) the corner as restored or reestablished, and (2) to at least 2 of the witness monuments shown on the drawing in (d), above.

(f) Was the corner restored through acceptance of (1) an obliterated evidence location, or, (2) a found perpetuated location?

(g&h) Was the corner reestablished through lost corner proportionate methods? If so, show the method, including the directions and distances to other public land survey corners used as evidence or used for proportioning in determining the corner location?



(i) I, Timothy J. Moore (type or print name) certify that the corner location shown on this record was determined by me or under my direction and control and that this U.S. Public Land Survey Monument Record is correct and complete to the best of my knowledge and belief.

Timothy J. Moore  
Signature

2-26-88  
Date