

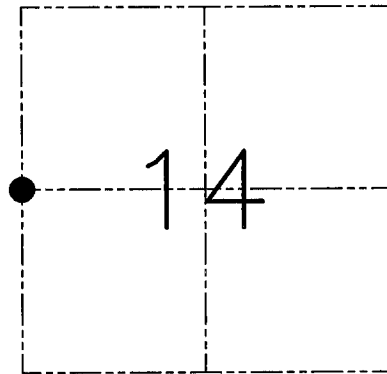
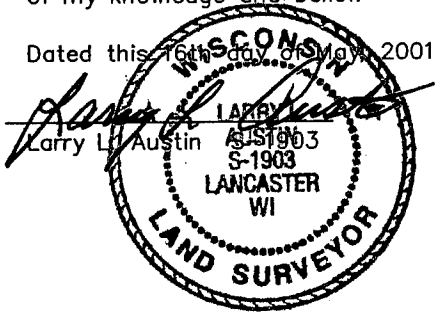
**U.S. PUBLIC LAND SURVEY MONUMENT RECORD - GRANT COUNTY, WI**

Section 14, Town 4 North Range 4 West, Town of Beetown

**CERTIFICATE**

I, Larry L. Austin, do hereby certify that the corner location on this record was determined by me and/or under my direct supervision and that this U.S. public land survey monument record is correct and complete to the best of my knowledge and belief.

Dated this 16th day of May, 2001



● = CORNER LOCATION

**HISTORY OF CORNER ESTABLISHMENT**

Corner was originally set in 1833 by Robert Clark. In 1844 Wiltse tied to the corner. In 1991 Woodman tied to the corner and stated he set a 3" iron pipe.

**DESCRIPTION OF CORNER EVIDENCE FOUND**

I found an existing 2" iron pipe and accepted it's location after an EDM & GPS traverse of the area.

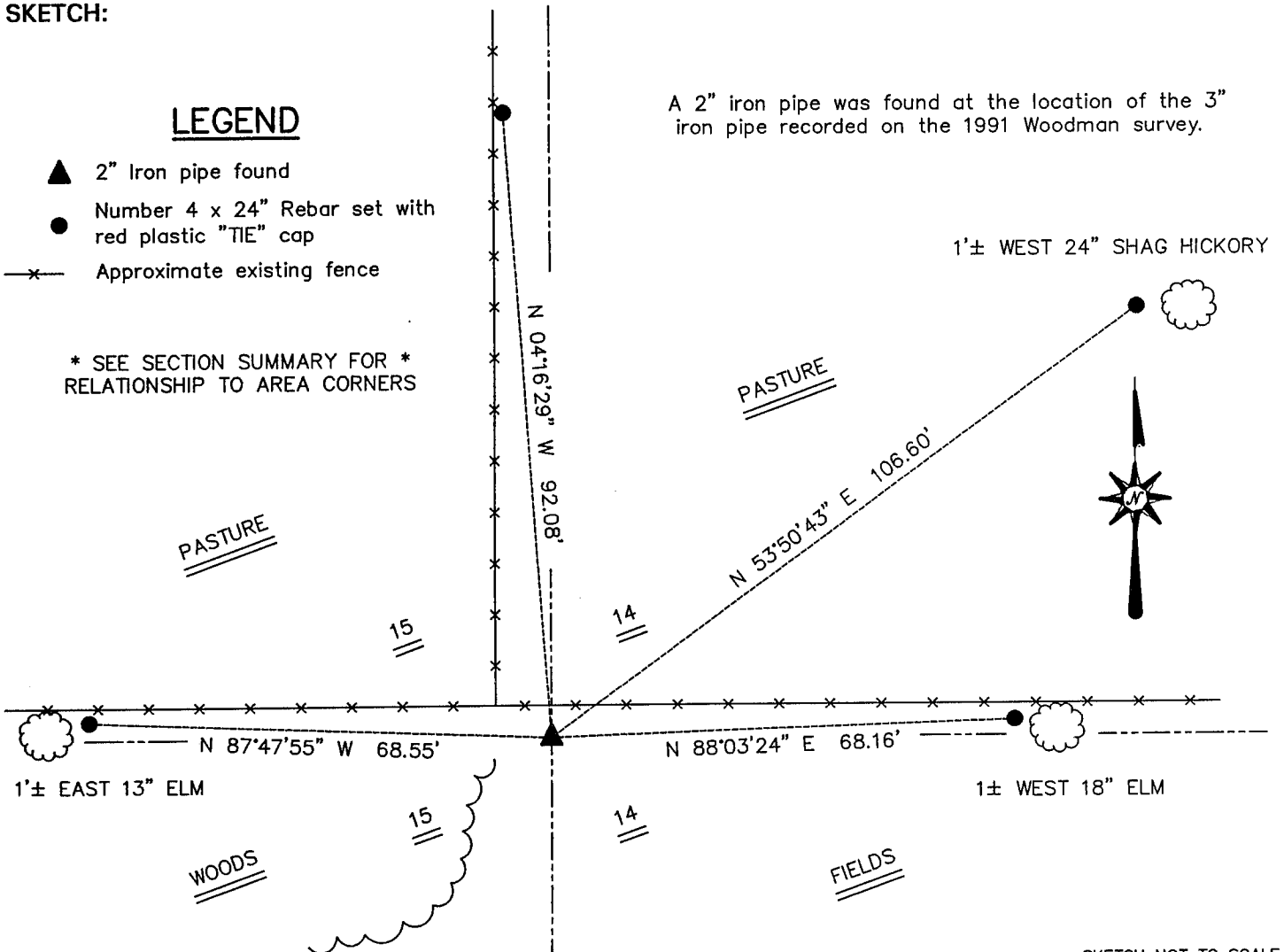
**DESCRIPTION OF CORNER AND WITNESS MONUMENTS, references and accessories used to perpetuate the original or re-established location of this corner. Witnesses to the corner location Bobby Sedgwick & Shane Austin & Cody Austin**

SKETCH:

**LEGEND**

- ▲ 2" Iron pipe found
- Number 4 x 24" Rebar set with red plastic "TIE" cap
- x— Approximate existing fence

\* SEE SECTION SUMMARY FOR \*  
RELATIONSHIP TO AREA CORNERS



A 2" iron pipe was found at the location of the 3" iron pipe recorded on the 1991 Woodman survey.

SKETCH NOT TO SCALE

**AUSTIN ENGINEERING, LLC**

4211 HWY 81 EAST, LANCASTER, WI 53813  
PHONE 608-723-6363 FAX 608-723-6702

FIELDBOOK: SDR33, 2101  
G: \T4NR4W\22  
C: \SWA\TIE\T4NR4W\58  
CREW: BS-SB-SA-TF

DRAWN BY: SW AUSTIN  
APPROVED: LL AUSTIN

**CORNER NUMBER 58**