

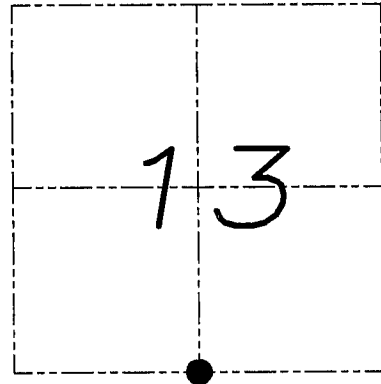
# U.S. PUBLIC LAND SURVEY MONUMENT RECORD

Section 13, Town 4 North Range 4 West, Town of Beetown, Grant County, Wisconsin

## CERTIFICATE

I, Larry L. Austin, do hereby certify that the corner location on this record was determined by me and/or under my direct supervision and that this U.S. public land survey monument record is correct and complete to the best of my knowledge and belief.

*Larry L. Austin*  
Larry L. Austin, S-1903



● = CORNER LOCATION

THE PURPOSE OF THIS TIESHEET IS TO REVISE THE SKETCH ON THE PREVIOUS TIESHEET FILED BY ME ON 4-11-01.

## HISTORY OF CORNER

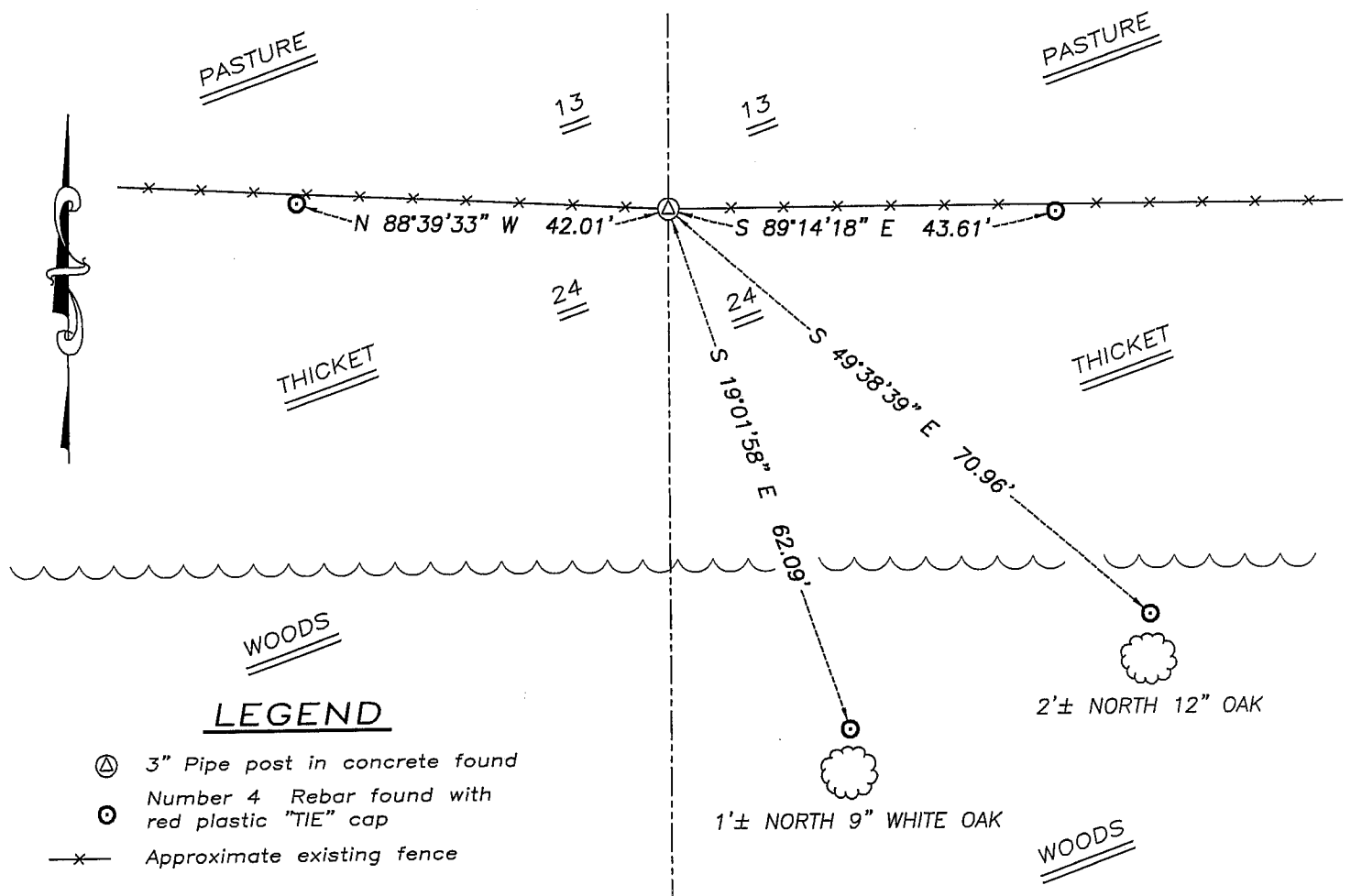
Corner was originally set in 1833 by Clark. In 1875 Barber found the original corner. No other record of the corner was found.

## CORNER EVIDENCE FOUND

I found a 3" pipe post in concrete and accepted it's location after an EDM & GPS travers of the area. This location fit well with adjoining corners.

DESCRIPTION OF CORNER AND WITNESS MONUMENTS, references and accessories used to perpetuate the original or re-established location of this corner. Witnesses to monument location Bobby Sedgwick & Brad Digman & Shelby Blindert

## SKETCH:



## LEGEND

- ⊙ 3" Pipe post in concrete found
- ⊙ Number 4 Rebar found with red plastic "TIE" cap
- x- Approximate existing fence



**Austin Engineering LLC**

4211 HWY 81 E, LANCASTER, WI 53813  
PHONE 608-723-6363 FAX 608-723-6702

JOB NUMBER NA  
FIELDBOOK: TDSR, 2101  
G:\T4NR4W\13  
H:\TIE\T4NR4W\62

DRAWN BY: SW AUSTIN  
APPROVED: LL AUSTIN

NOT TO SCALE

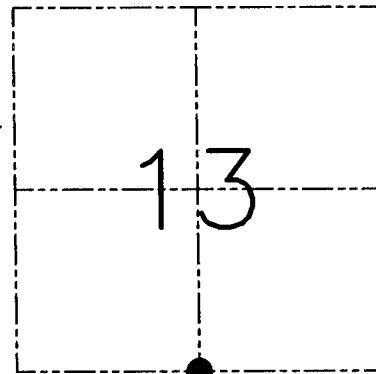
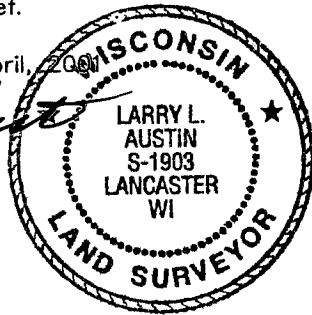
**U.S. PUBLIC LAND SURVEY MONUMENT RECORD - GRANT COUNTY, WI**  
 Section 13, Town 4 North Range 4 West, Town of Beetown

**CERTIFICATE**

I, Larry L. Austin, do hereby certify that the corner location on this record was determined by me and/or under my direct supervision and that this U.S. public land survey monument record is correct and complete to the best of my knowledge and belief.

Dated this 11th day of April, 2009

*Larry L. Austin*  
 Larry L. Austin S-1903



● = CORNER LOCATION

**HISTORY OF CORNER ESTABLISHMENT**

Corner was originally set in 1833 by Robert Clark. In 1875 Joel Barber found the original corner. No other record of the corner was found.

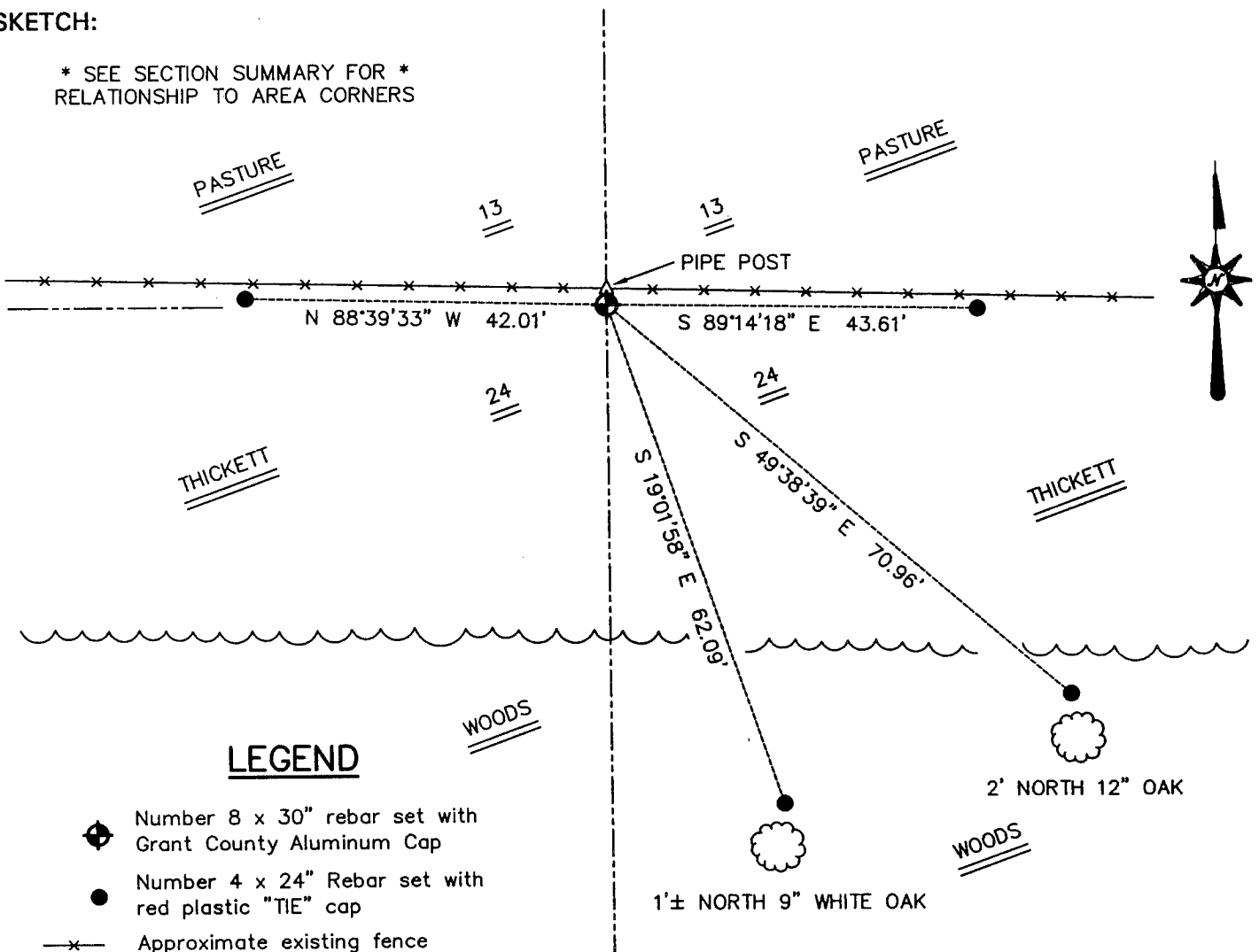
**DESCRIPTION OF CORNER EVIDENCE FOUND**

I reset the corner at an occupied location. This location fit very well with adjoining corners. Verified this location using EDM & GPS methods.

**DESCRIPTION OF CORNER AND WITNESS MONUMENTS, references and accessories used to perpetuate the original or re-established location of this corner. Witnesses to the corner location Bobby Sedgwick & Shelby Blindert & Tim Fauver.**

**SKETCH:**

\* SEE SECTION SUMMARY FOR \*  
 RELATIONSHIP TO AREA CORNERS



**LEGEND**

- ◆ Number 8 x 30" rebar set with Grant County Aluminum Cap
- Number 4 x 24" Rebar set with red plastic "TIE" cap
- x- Approximate existing fence

SKETCH NOT TO SCALE

**AUSTIN ENGINEERING, LLC**

4211 HWY 81 EAST, LANCASTER, WI 53813  
 PHONE 608-723-6363 FAX 608-723-6702

FIELDBOOK: SDR33, 2101  
 G: \T4NR4W\13  
 C: \SWA\TIE\T4NR4W\62  
 CREW: BS-SB-SA-TF

DRAWN BY: SW AUSTIN  
 APPROVED: LL AUSTIN

**CORNER NUMBER 62**