

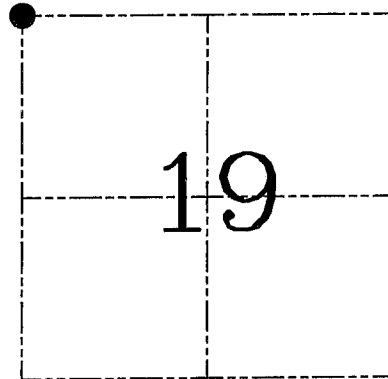
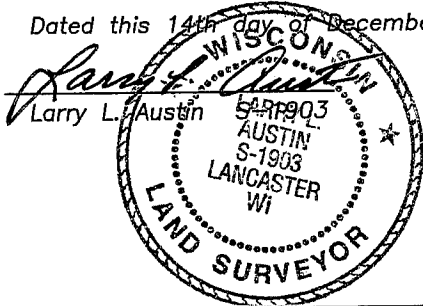
U.S. PUBLIC LAND SURVEY MONUMENT RECORD – GRANT COUNTY, WI

Section 19, Town 4 North Range 3 West, Town of South Lancaster

CERTIFICATE

I, Larry L. Austin, do hereby certify that the corner location on this record was determined by me and/or under my direct supervision and that this U.S. public land survey monument record is correct and complete to the best of my knowledge and belief.

Dated this 14th day of December, 2004



● = CORNER LOCATION

HISTORY OF CORNER ESTABLISHMENT

Corner was originally set in 1833 by Clark.
In 1844 Wiltse tied to the corner with no mention of monument.

DESCRIPTION OF CORNER EVIDENCE FOUND

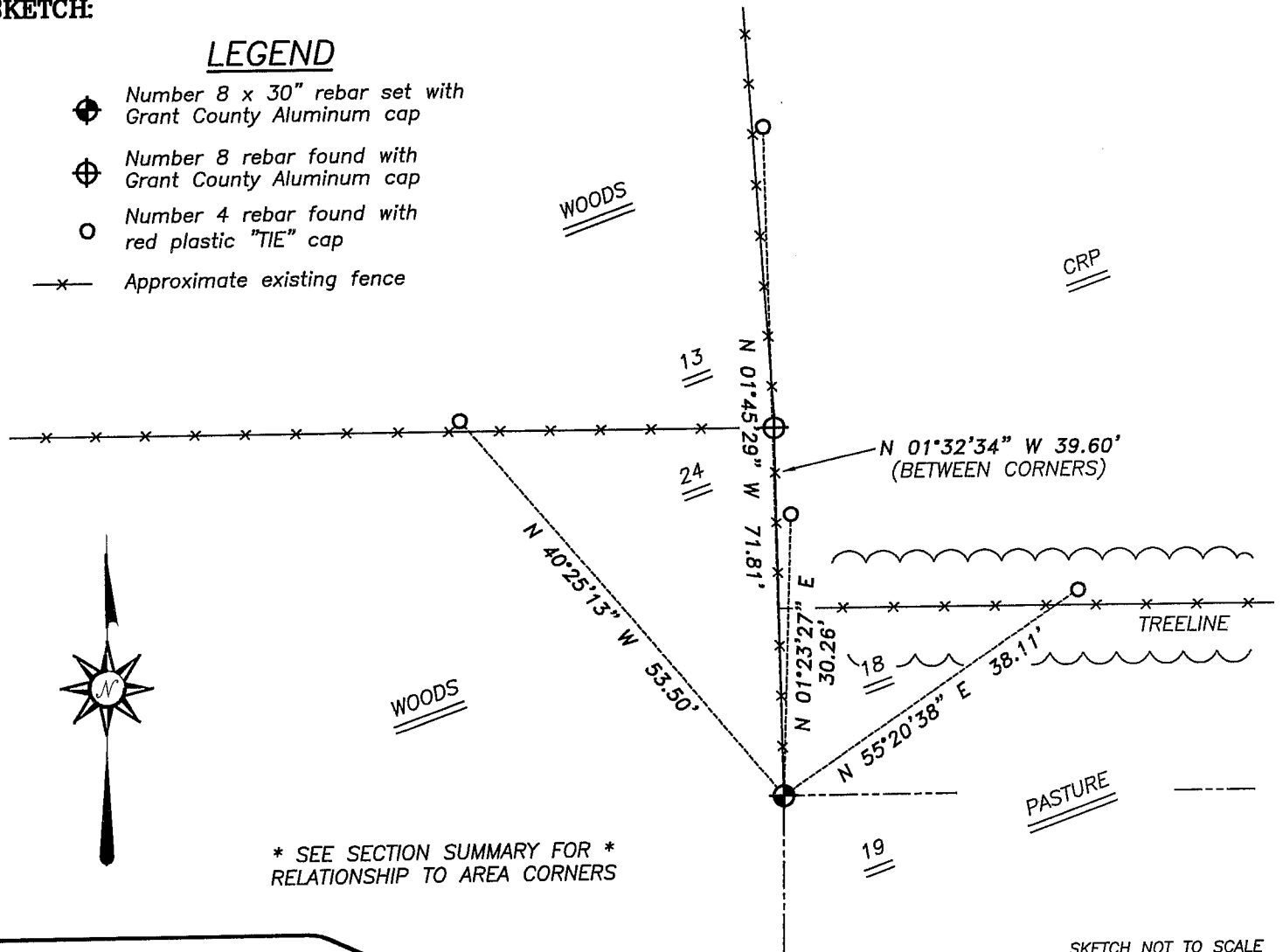
I found an occupied location and did not accept it due to the recorded offset. I set the corner at the recorded offset from the Northeast corner of Section 24. Verified this location using EDM & GPS methods.

DESCRIPTION OF CORNER AND WITNESS MONUMENTS, references and accessories used to perpetuate the original or re-established location of this corner. Witnesses to corner location Bobby Sedgwick & Shelby Blindert & Brad Digman

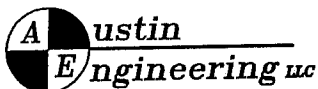
SKETCH:

LEGEND

- ⊕ Number 8 x 30" rebar set with Grant County Aluminum cap
- ⊕ Number 8 rebar found with Grant County Aluminum cap
- Number 4 rebar found with red plastic "TIE" cap
- x— Approximate existing fence



SKETCH NOT TO SCALE



4211 HWY 81 E, LANCASTER, WI 53813
PHONE 608-723-6363 FAX 608-723-6702

JOB NUMBER 04S249
FIELDBOOK: TSDR, 2417
G:\T4NR3W\17
H:\TIE\T4NR3W\73

DRAWN BY: SW AUSTIN
APPROVED: LL AUSTIN

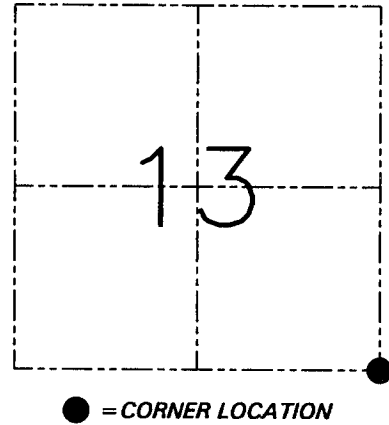
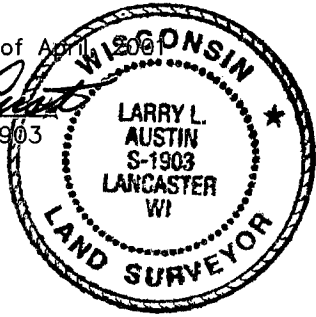
U.S. PUBLIC LAND SURVEY MONUMENT RECORD - GRANT COUNTY, WI
Section 13, Town 4 North Range 4 West, Town of Beetown

CERTIFICATE

I, Larry L. Austin, do hereby certify that the corner location on this record was determined by me and/or under my direct supervision and that this U.S. public land survey monument record is correct and complete to the best of my knowledge and belief.

Dated this 11th day of April 2001

Larry L. Austin
 Larry L. Austin S-1903



HISTORY OF CORNER ESTABLISHMENT

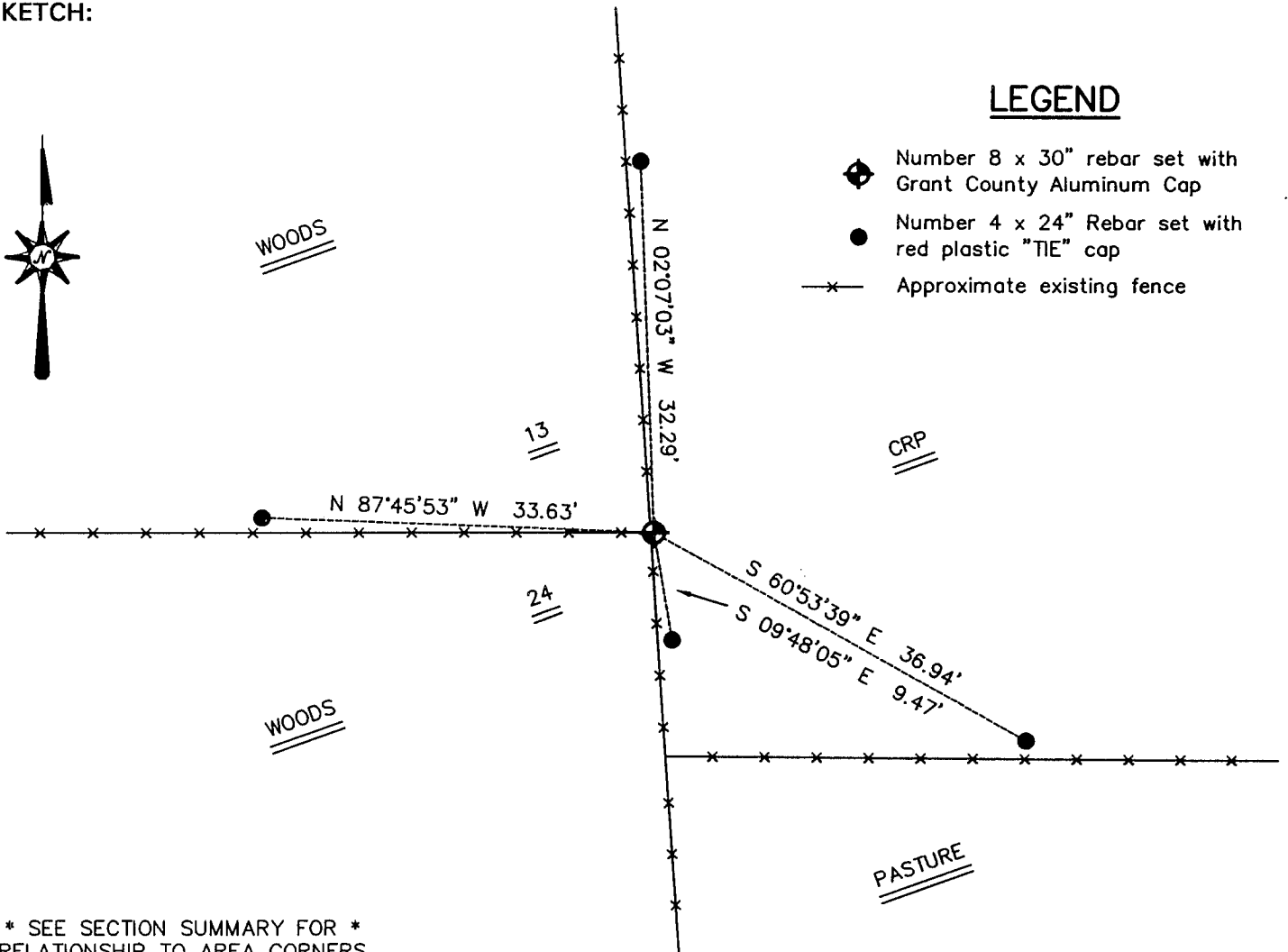
Corner was originally set in 1832 by Sibley. In 1850 Geo Stuntz tied to the corner. Corner was tied to in 1875 by Joel Barber who set new bearing trees. No other record of the corner was found.

DESCRIPTION OF CORNER EVIDENCE FOUND

I set the corner at an occupied location. This location fit well with area corners. Verified this location using EDM & GPS methods.

DESCRIPTION OF CORNER AND WITNESS MONUMENTS, references and accessories used to perpetuate the original or re-established location of this corner. Witnesses to the corner location Bobby Sedgwick & Shelby Blindert & Tim Fauver.

SKETCH:



* SEE SECTION SUMMARY FOR *
 RELATIONSHIP TO AREA CORNERS

SKETCH NOT TO SCALE

AUSTIN ENGINEERING, LLC
 4211 HWY 81 EAST, LANCASTER, WI 53813
 PHONE 608-723-6363 FAX 608-723-6702

FIELDBOOK: SDR33, 2101
 G: \T4NR4W\13
 C: \SWA\TIE\T4NR4W\61
 CREW: BS-SB-SA-TF

DRAWN BY: SW AUSTIN
 APPROVED: LL AUSTIN

CORNER NUMBER 61