

U.S. PUBLIC LAND SURVEY MONUMENT RECORD - GRANT COUNTY, WI

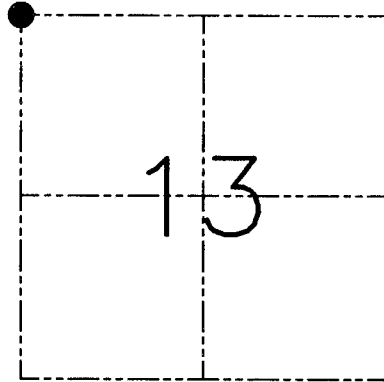
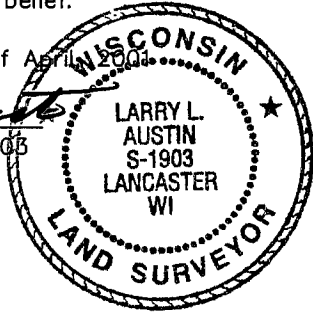
Section 13, Town 4 North Range 4 West, Town of Beetown

CERTIFICATE

I, Larry L. Austin, do hereby certify that the corner location on this record was determined by me and/or under my direct supervision and that this U.S. public land survey monument record is correct and complete to the best of my knowledge and belief.

Dated this 11th day of April, 2004

Larry L. Austin
Larry L. Austin S-1903



● = CORNER LOCATION

HISTORY OF CORNER ESTABLISHMENT

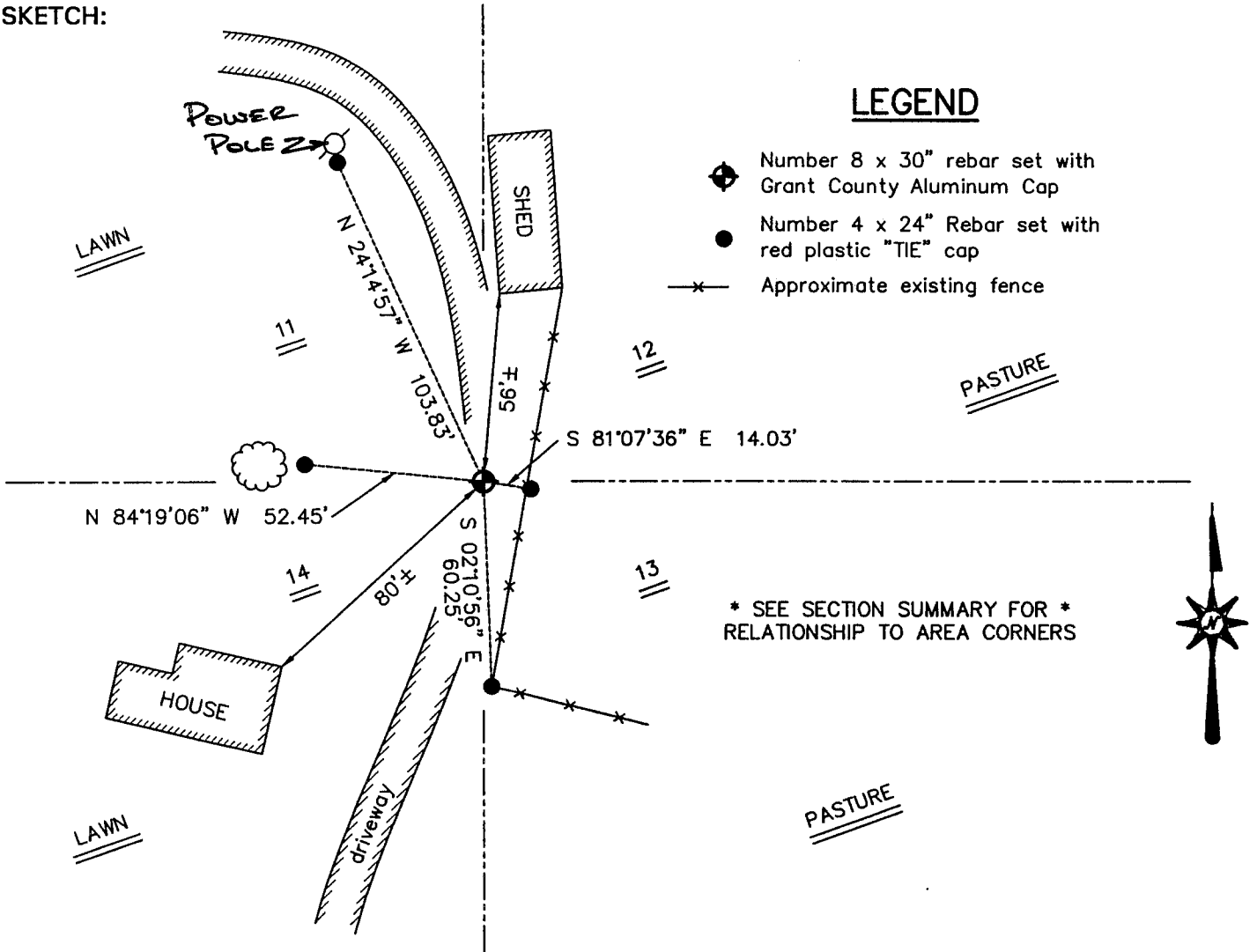
Corner was originally set in 1833 by Robert Clark. In 1842 Freeman found the original bearing trees. No other record of the corner was found.

DESCRIPTION OF CORNER EVIDENCE FOUND

I found no evidence to the location of the corner. I reset the corner proportionately between the West 1/4 of Section 13 and the Northwest corner of Section 12. Verified this location using EDM & GPS methods.

DESCRIPTION OF CORNER AND WITNESS MONUMENTS, references and accessories used to perpetuate the original or re-established location of this corner. Witnesses to the corner location Bobby Sedgwick & Shelby Blindert & Tim Fauver.

SKETCH:



SKETCH NOT TO SCALE

AUSTIN ENGINEERING, LLC
4211 HWY 81 EAST, LANCASTER, WI 53813
PHONE 608-723-6363 FAX 608-723-6702

FIELDBOOK: SDR33, 2101
G: \T4NR4W\13
C: \SWA\TIE\T4NR4W\62
CREW: BS-SB-SA-TF

DRAWN BY: SW AUSTIN
APPROVED: LL AUSTIN

CORNER NUMBER 43