

U.S. PUBLIC LAND SURVEY MONUMENT RECORD - GRANT COUNTY, WI

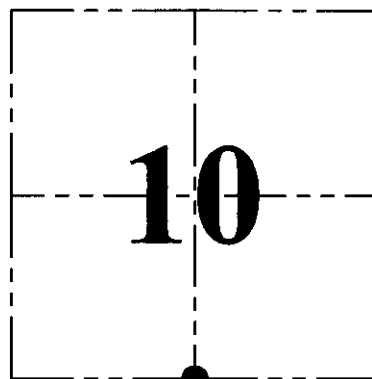
Section 10, Town 4 North Range 4 West, Town of Beetown

CERTIFICATE:

I, Aaron J. Austin, Wisconsin Professional Land Surveyor, do hereby certify that the corner location on this record was determined by me and/or under my direct supervision and that this U.S. Public Land Survey Monument Record is correct and complete to the best of my knowledge and belief.

Dated this 1st day of September, 2015.

Aaron J. Austin, S-2922
 Lancaster, WI
 Wisconsin Professional Land Surveyor



● = CORNER LOCATION

HISTORY OF CORNER ESTABLISHMENT:

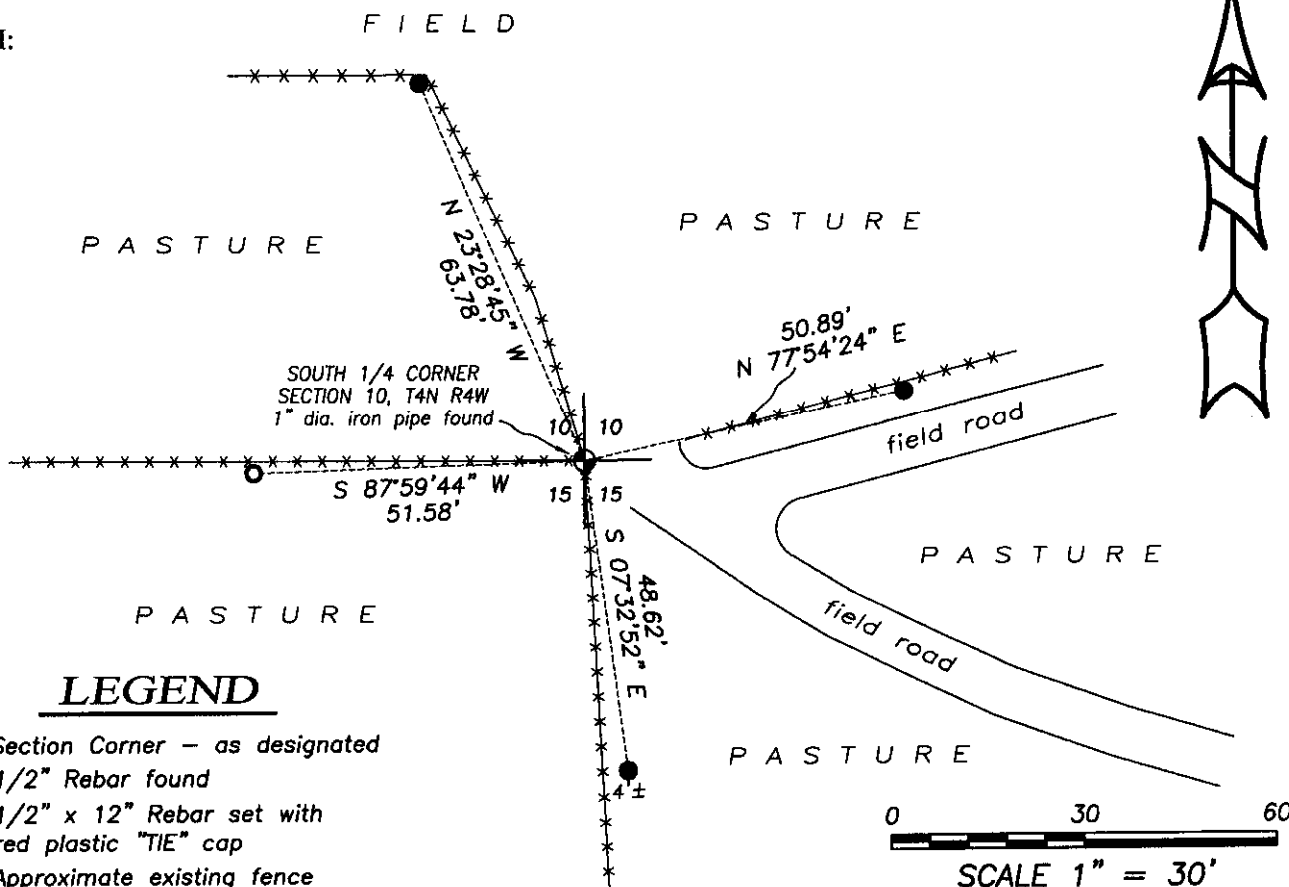
- 1832-Robert Clark set original corner.
- 1842-Freeman tied to the corner on a Survey in Book A, Page 138.
- 1844-Wiltse tied to the corner on a Survey in Book A, Page 168
- 1979-Kenneth Kerst set a 1" iron pipe at the corner on a Survey in Book K, Page 222.
- 1991-William Woodman tied to the corner on a Survey in Book Q, Page 1 and 2.
- 2001-Larry Austin prepared a Grant County Certified Land Corner record.
- 2001-Larry Austin tied to the corner on C.S.M. No. 740 and No. 741.
- 2003-Larry Austin tied to the corner on a Survey in Book 13, Page 35.
- 2011-Aaron Austin tied to the corner on a Survey in Book 29, Page 27.
- 2011-Aaron Austin tied to the corner on a Survey in Book 31, Page 82.
- 2013-Aaron Austin tied to the corner on a Survey in Book 33, Page 59.

DESCRIPTION OF CORNER EVIDENCE FOUND:

I found the 1" diameter iron pipe in place. I found one witness corner set by Larry Austin. I set 3 additional witness corners as shown below. This location was verified by E.D.M. and G.P.S. methods.

DESCRIPTION OF CORNER AND WITNESS MONUMENTS, references and accessories used to perpetuate the original or re-established location of this corner. Witnesses to corner location Shane Austin.

SKETCH:



LEGEND

- Section Corner - as designated
- 1/2" Rebar found
- 1/2" x 12" Rebar set with red plastic "TIE" cap
- *- Approximate existing fence



4211 HWY 81 E, LANCASTER, WI 53813
 PHONE: 608-723-6363 FAX: 608-723-6702

JOB NO: 15s143
 H:\CRD\15s143
 H:\TIE\T4NR4W\46

FIELDBOOK: TDSR
 DRAWN BY: AJ AUSTIN
 CREW: SW AUSTIN

GRANT COUNTY CERTIFIED LAND CORNER

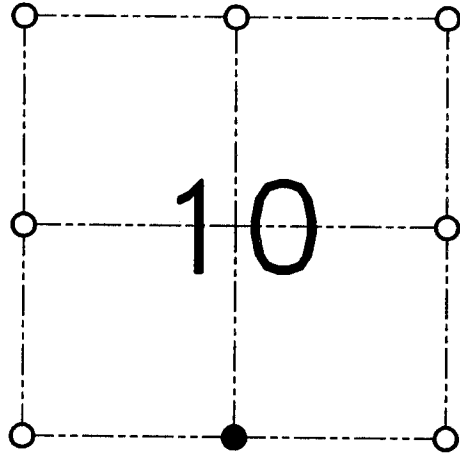
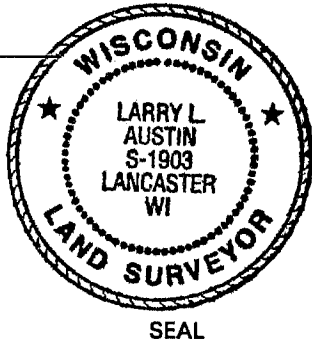
CORNER NUMBER 46

CERTIFICATE:

I, Larry L. Austin, do hereby certify that the corner location on this record was determined by me and/or under my direct supervision and that this U.S. public land survey monument record is correct and complete to the best of my knowledge and belief.

Dated this 16th day of March, 2001

Larry L. Austin
Larry L. Austin, S-1903



● = CORNER LOCATION

SECTION 10, T 4 N R 4 W
TOWN OF BEETOWN

HISTORY OF ORIGINAL CORNER ESTABLISHMENT:

Corner was originally set in 1833 by Robert Clark. In 1844 Wiltse tied to the corner. In 1979 Kenneth Kerst set a 1" Iron pipe at this location.

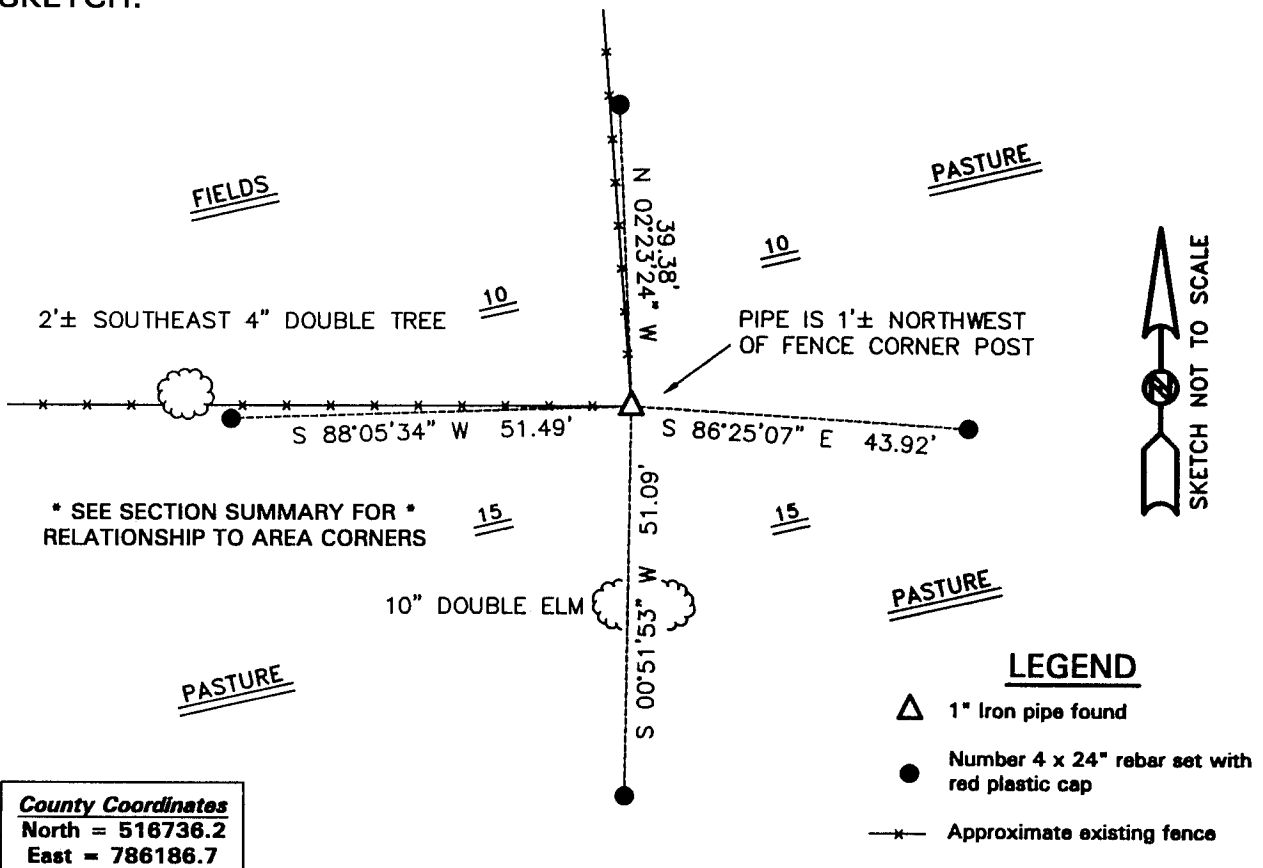
DESCRIPTION OF CORNER EVIDENCE FOUND:

I found the existing 1" Iron pipe and accepted it's location after an EDM & GPS traverse of the area.

DESCRIPTION OF CORNER AND WITNESS MONUMENTS

references and accessories used to perpetuate the original or re-established location of this corner.

SKETCH:



County Coordinates
North = 516736.2
East = 786186.7

AUSTIN ENGINEERING, LLC
4211 HWY 81 E, LANCASTER, WI 53813
PHONE 608-723-6363 FAX 608-723-6702

FIELDBOOK: SDR33, 2010
G:\T4NR4W\22
G:\SWA\TIE\T4NR4W\46

DRAWN BY: SW AUSTIN
APPROVED: LL AUSTIN
CREW: BS-SB-SA-TF
SHEET 1 OF 1

JUN 14 2001