

# GRANT COUNTY CERTIFIED LAND CORNER

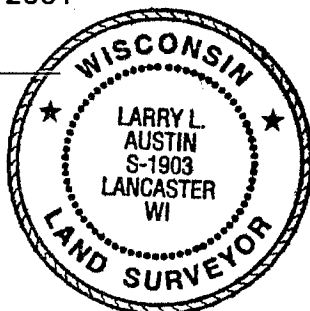
CORNER NUMBER 47

**CERTIFICATE:**

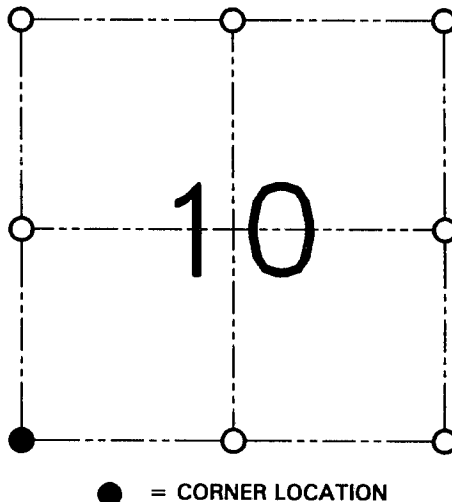
I, Larry L. Austin, do hereby certify that the corner location on this record was determined by me and/or under my direct supervision and that this U.S. public land survey monument record is correct and complete to the best of my knowledge and belief.

Dated this 16th day of March, 2001

*Larry L. Austin*  
Larry L. Austin, S-1903



SEAL



SECTION 10, T 4 N R 4 W  
TOWN OF BEETOWN

**HISTORY OF ORIGINAL CORNER ESTABLISHMENT:**

Corner was originally set in 1833 by Robert Clark. In 1844 Wiltse tied to the corner. In 1988 Tim Moore set a Bernsten Aluminum monument.

**DESCRIPTION OF CORNER EVIDENCE FOUND:**

I found the Bernsten Aluminum monument to be incorrect. I found the existing Number 6 iron bar at the occupied fence corner East of the Aluminum monument to be more proportionate to the East, West, North and South. Verified this location using EDM & GPS methods.

**DESCRIPTION OF CORNER AND WITNESS MONUMENTS**

references and accessories used to perpetuate the original or re-established location of this corner.

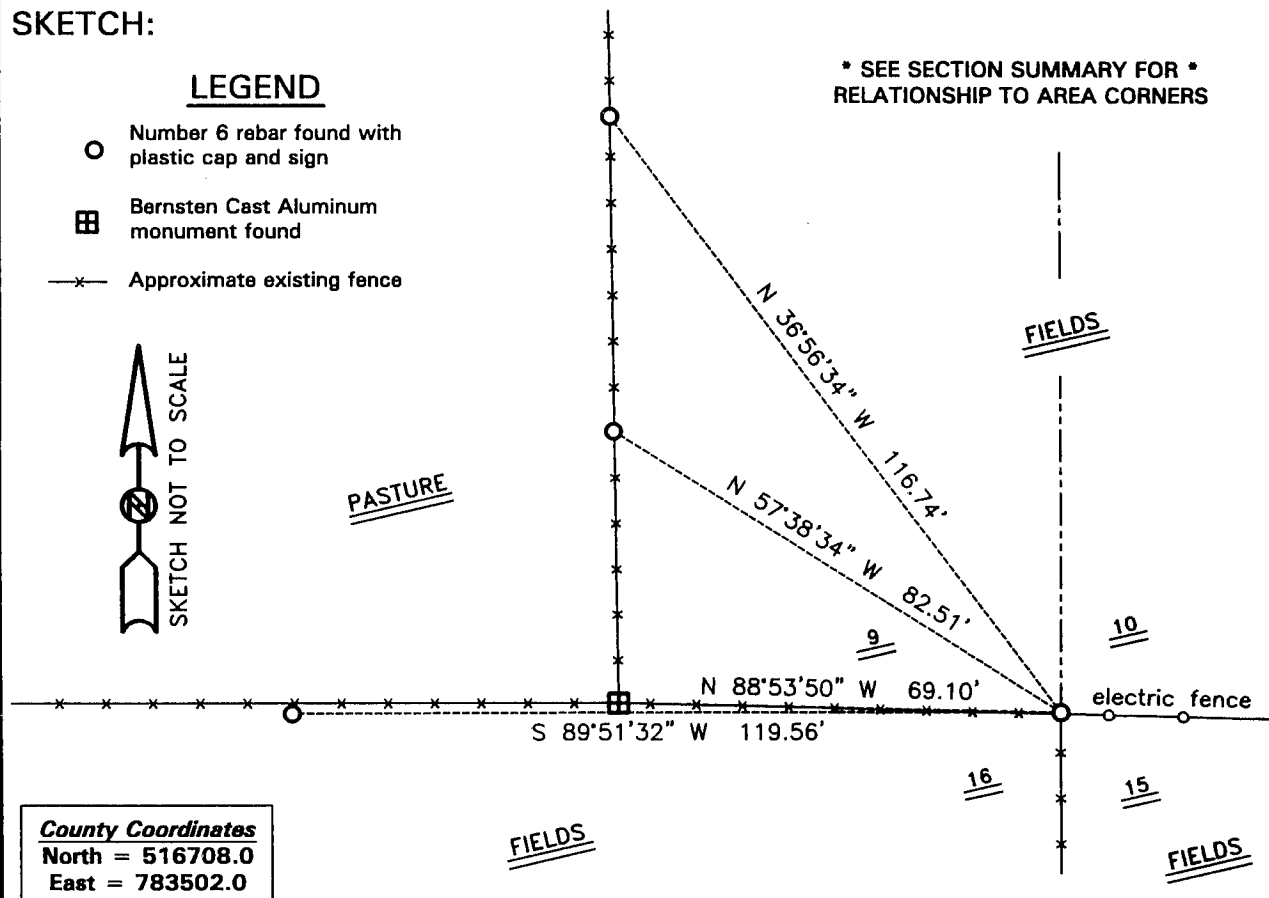
**SKETCH:**

LEGEND

- Number 6 rebar found with plastic cap and sign
- ⊞ Bernsten Cast Aluminum monument found
- x— Approximate existing fence



\* SEE SECTION SUMMARY FOR \*  
RELATIONSHIP TO AREA CORNERS



**County Coordinates**  
North = 516708.0  
East = 783502.0

**AUSTIN ENGINEERING, LLC**  
4211 HWY 81 E, LANCASTER, WI 53813  
PHONE 608-723-6363 FAX 608-723-6702

FIELDBOOK: SDR33, 2010  
G:\T4NR4W\22  
G:\SWA\TIE\T4NR4W\47

DRAWN BY: SW AUSTIN  
APPROVED: LL AUSTIN  
CREW: BS-SB-SA-TF  
SHEET 1 OF 1

JUN 14 2001

# U. S. PUBLIC LAND SURVEY MONUMENT RECORD

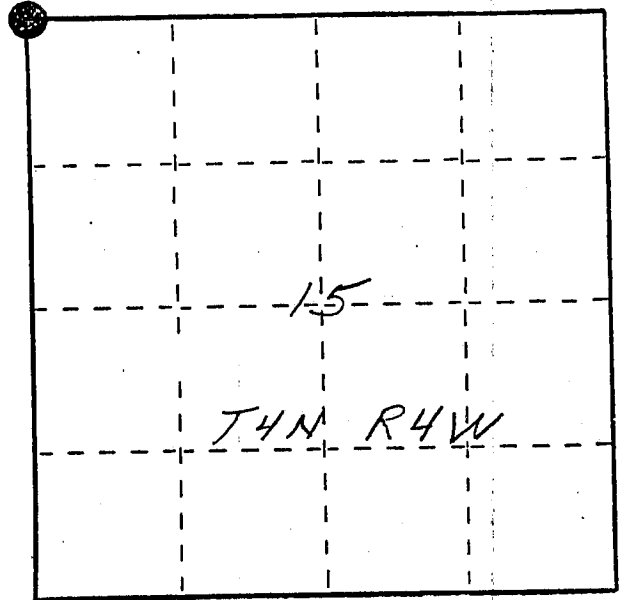
INSTRUCTIONS: This record shall show the location of the corner and shall include all of the following nine elements (a through i).

- (a) Identify the corner by reference to the U.S. public land survey system.  
 ● = Corner monument restored.

NW corner section 15  
 T4N R4W of the  
 4th P.M.  
 Town of Beetown  
 Grant County, Wisconsin

RECORDED

MAR 2 1988



- (b) Describe any record evidence, monument evidence, occupational evidence, testimonial evidence or any other material evidence you considered, and whether the monument was found or placed.

Monument set at existing fence corner. Nail and washer was found on top of corner post. Talked with Dick Weidenbeck, Calvin Keil and Burrell Bishop. They all said that some previous surveying had been done in the area. They all agreed that corner post was also marking the section corner. A one inch iron pipe was found a half mile east. This iron was set by Kenneth A Kerst Jr. S-1385 as being the NW corner of section 15. The distance between corners seems long. A topo call to the Grant River agrees

- (c) In the plan view drawing below, provide reference ties to at least 4 witness monuments, or, if the location is within a municipality, to at least 2 witness monuments. (Witness monuments shall be made of concrete, natural stone, iron or other equally durable material, ~~except wood~~.) Describe witness monuments.

- (d) Show a plan view drawing depicting the relevant monuments and reference ties which is sufficient in detail to enable accurate relocation of the corner monument if the corner monument is disturbed. Indicate north.

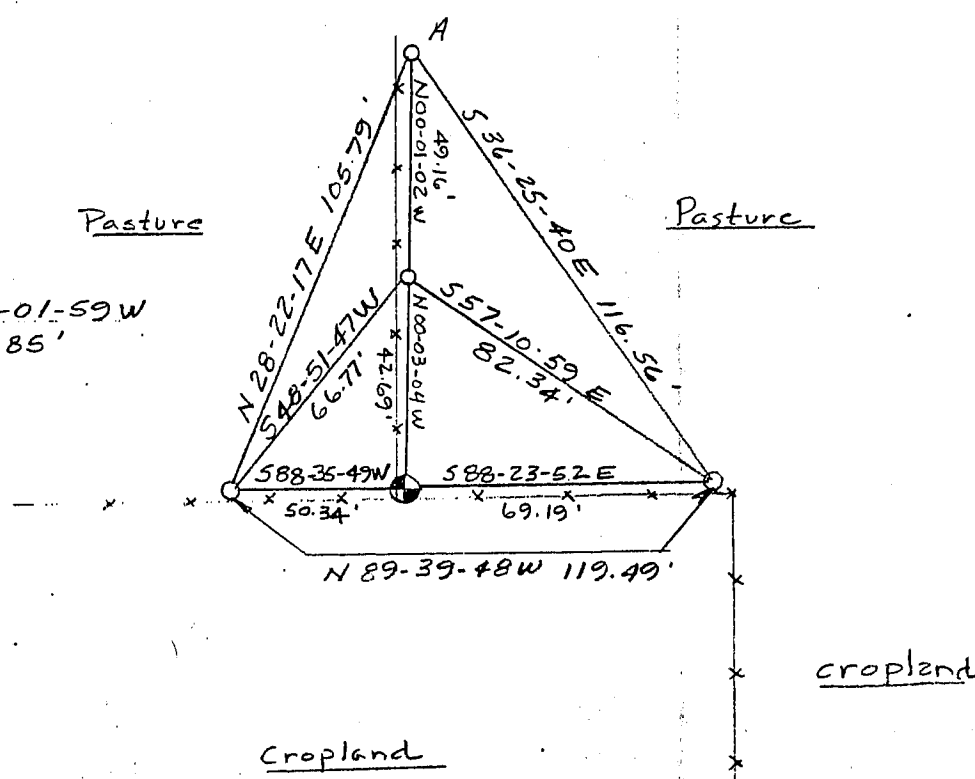
fairly well with corner location. No surveys could be found relating to this corner.



No Scale  
 Bearings - Wis. Grid

● Berntsen A-1 mon.  
 set 0.1' below ground

○ Ref. mon. - 3/4" x 24"  
 rebar w/cap.



Describe any material discrepancy between the location of the corner as restored or reestablished and the location of that corner as previously restored or reestablished by distance and direction. Show the discrepancy on the plan view drawing under (d), above. Show the distances between the corner as previously restored or reestablished and (1) the corner as restored or reestablished, and (2) to at least 2 of the witness monuments shown on the drawing in (d), above.

*Nail and washer found on top of fence corner post. May have been used in a previous unrecorded survey.*

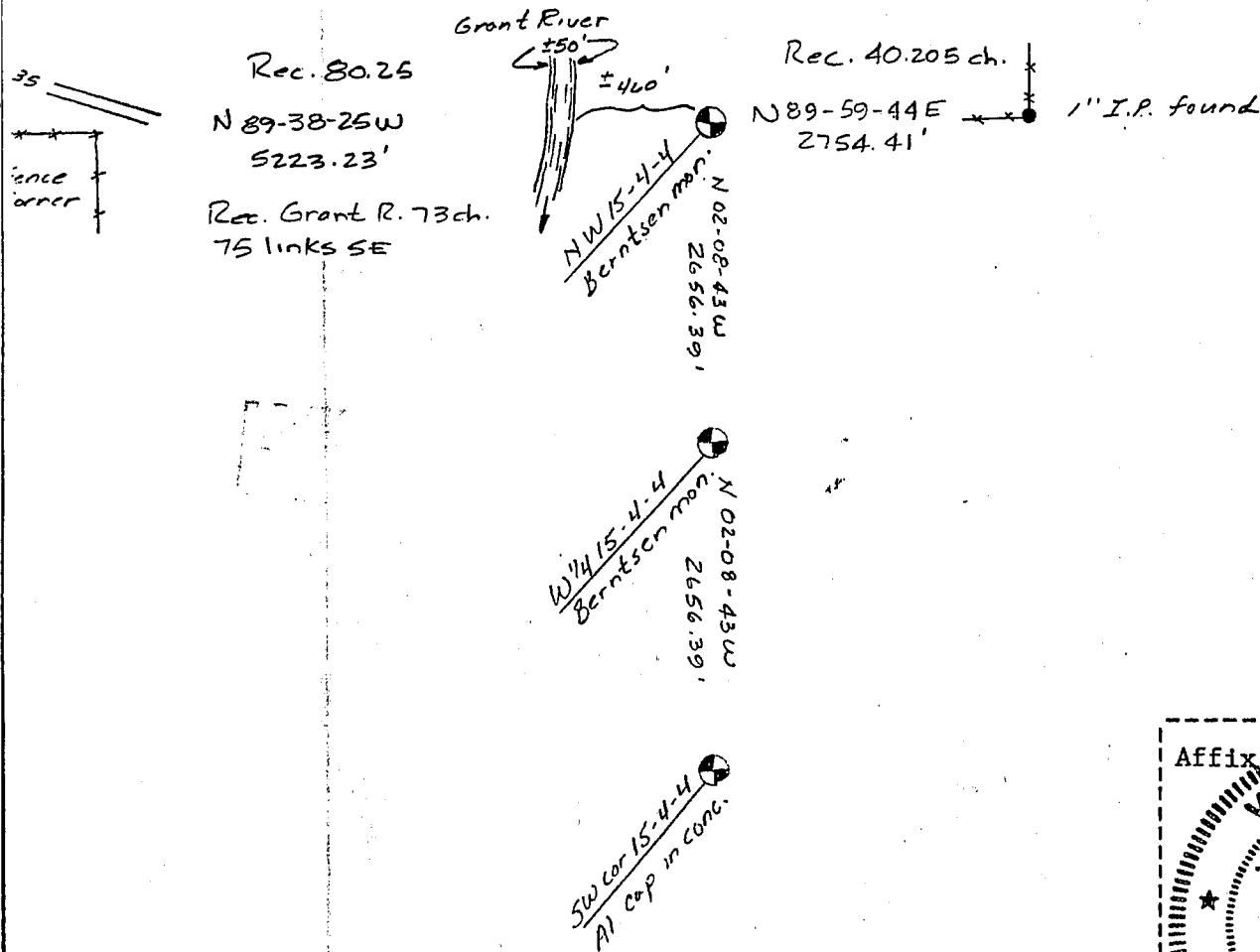
(f) Was the corner restored through acceptance of (1) an obliterated evidence location, or, (2) a found perpetuated location?

(g&h) Was the corner reestablished through lost corner proportionate methods? If so, show the method, including the directions and distances to other public land survey corners used as evidence or used for proportioning in determining the corner location?

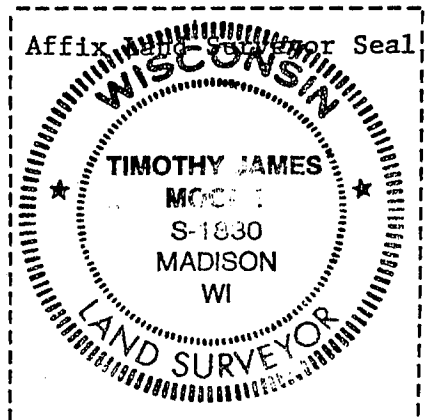


Note: nail & washer bear SW one foot from section corner set.

No Scale  
Bearings - Wis. Grid



(i) I, Timothy J. Moore  
(type or print name) certify that the corner location shown on this record was determined by me or under my direction and control and that this U.S. Public Land Survey Monument Record is correct and complete to the best of my knowledge and belief.



Timothy J. Moore      2-23-78  
Signature      Date