

# GRANT COUNTY CERTIFIED LAND CORNER

CORNER NO. 16

**CERTIFICATE:**

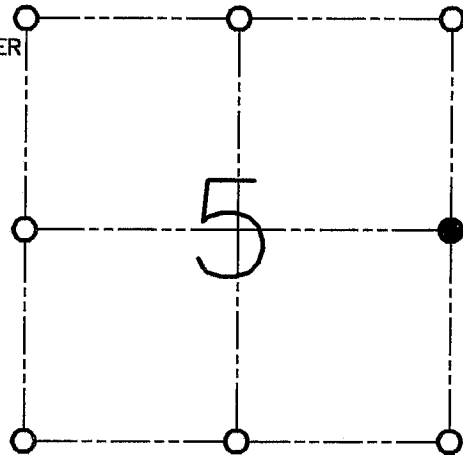
I, LARRY L. AUSTIN, DO HEREBY CERTIFY THAT ON 8TH DAY OF MAY, 1998, I FOUND OCCUPATIONAL EVIDENCE OF THE EAST 1/4 CORNER OF SECTION 5, TOWN 4 NORTH, RANGE 4 WEST, OF THE FOURTH PRINCIPAL MERIDIAN, AND I RE-ESTABLISHED SAID CORNER ACCORDING TO THE WISCONSIN STATUTES AS SHOWN AND DESCRIBED HEREON.

DATED, THIS 4TH DAY OF JANUARY, 1999

*Larry L. Austin*  
LARRY L. AUSTIN S-1903



SEAL



● = CORNER LOCATION

**EAST 1/4 OF SECTION 5,  
T 4 N R 4 W  
TOWN OF BEETOWN**

**HISTORY OF ORIGINAL CORNER ESTABLISHMENT:**

CORNER WAS SET IN 1833 BY ROBERT CLARK.

**DESCRIPTION OF CORNER EVIDENCE FOUND:**

CORNER WAS SET AT AN OCCUPIED FENCE CORNER.  
VERIFIED THIS LOCATION USING E.D.M. AND G.P.S. METHODS.

**DESCRIPTION OF CORNER AND WITNESS MONUMENTS, REFERENCES AND ACCESSORIES USED TO PERPETUATE THE ORIGINAL OR RE-ESTABLISHED LOCATION OF THIS CORNER:**

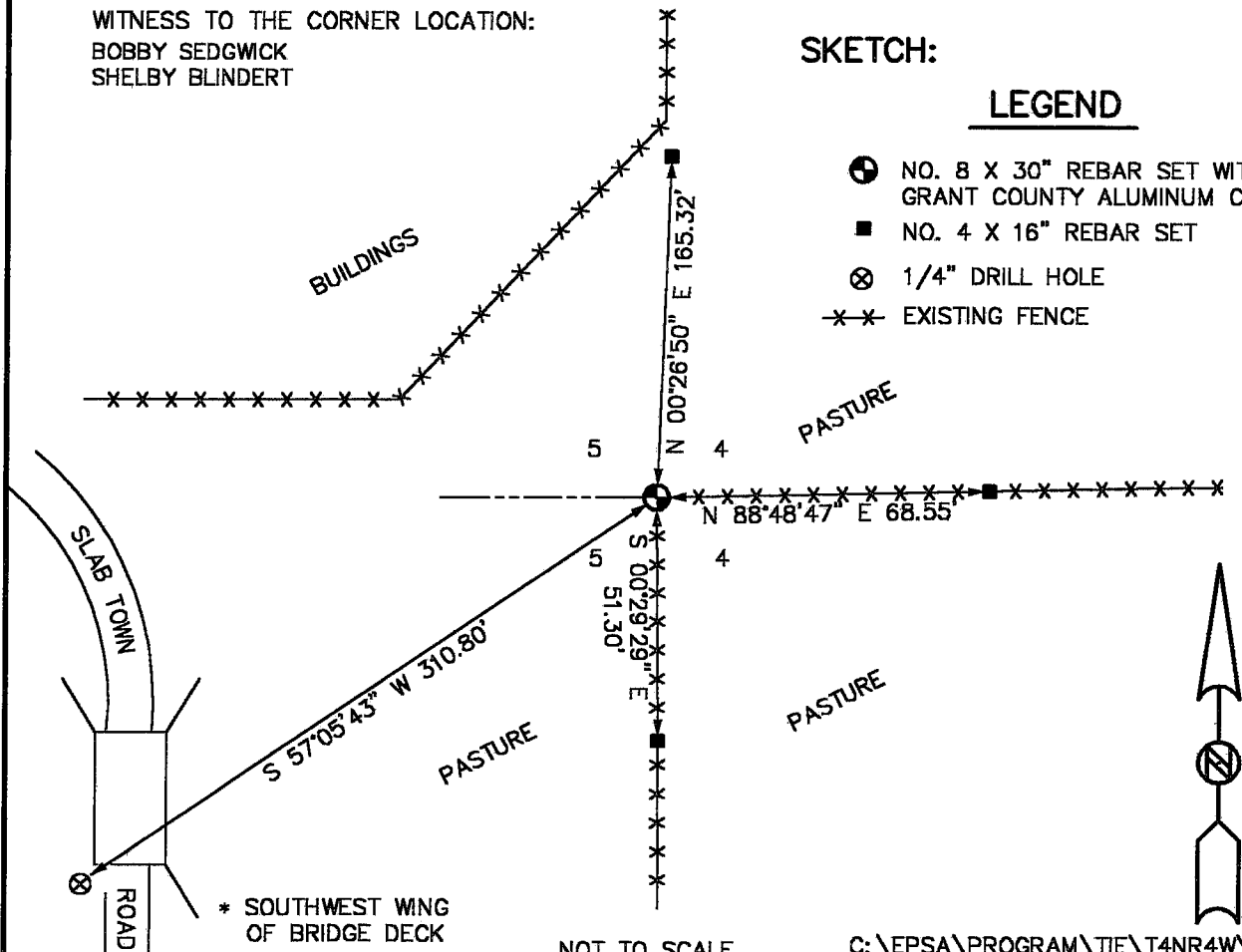
**WITNESS TO THE CORNER LOCATION:**

BOBBY SEDGWICK  
SHELBY BLINDERT

**SKETCH:**

LEGEND

- NO. 8 X 30" REBAR SET WITH GRANT COUNTY ALUMINUM CAP
- NO. 4 X 16" REBAR SET
- ⊗ 1/4" DRILL HOLE
- x-x- EXISTING FENCE



\* SOUTHWEST WING OF BRIDGE DECK

NOT TO SCALE

C:\EPSA\PROGRAM\TIE\T4NR4W\16