

GRANT COUNTY CERTIFIED LAND CORNER

CORNER NO. 26

CERTIFICATE:

I, LARRY L. AUSTIN, DO HEREBY CERTIFY THAT ON 11 DAY OF NOVEMBER, 1998, I FOUND NO EVIDENCE OF THE SOUTH 1/4 CORNER OF SECTION 3, TOWN 4 NORTH, RANGE 4 WEST, OF THE FOURTH PRINCIPAL MERIDIAN, AND I RE-ESTABLISHED SAID CORNER ACCORDING TO THE WISCONSIN STATUTES AS SHOWN AND DESCRIBED HEREON.

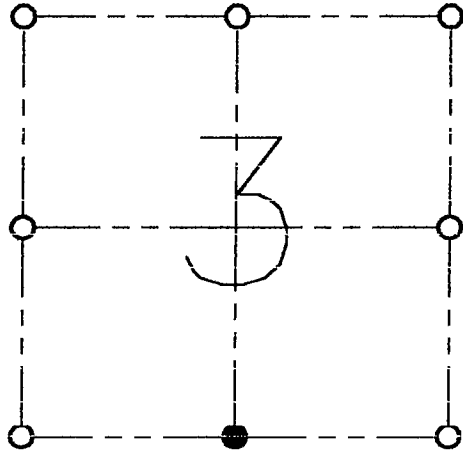
DATED THIS 30 DAY OF August, 1998

Larry L. Austin
LARRY L. AUSTIN S-1903



SEAL

T 4 N R 4 W
TOWN OF BEETOWN



● = CORNER LOCATION

HISTORY OF ORIGINAL CORNER ESTABLISHMENT:

CORNER SET IN 1833 BY ROBERT CLARK.
NO OTHER EVIDENCE OF CORNER FOUND.

DESCRIPTION OF CORNER EVIDENCE FOUND:

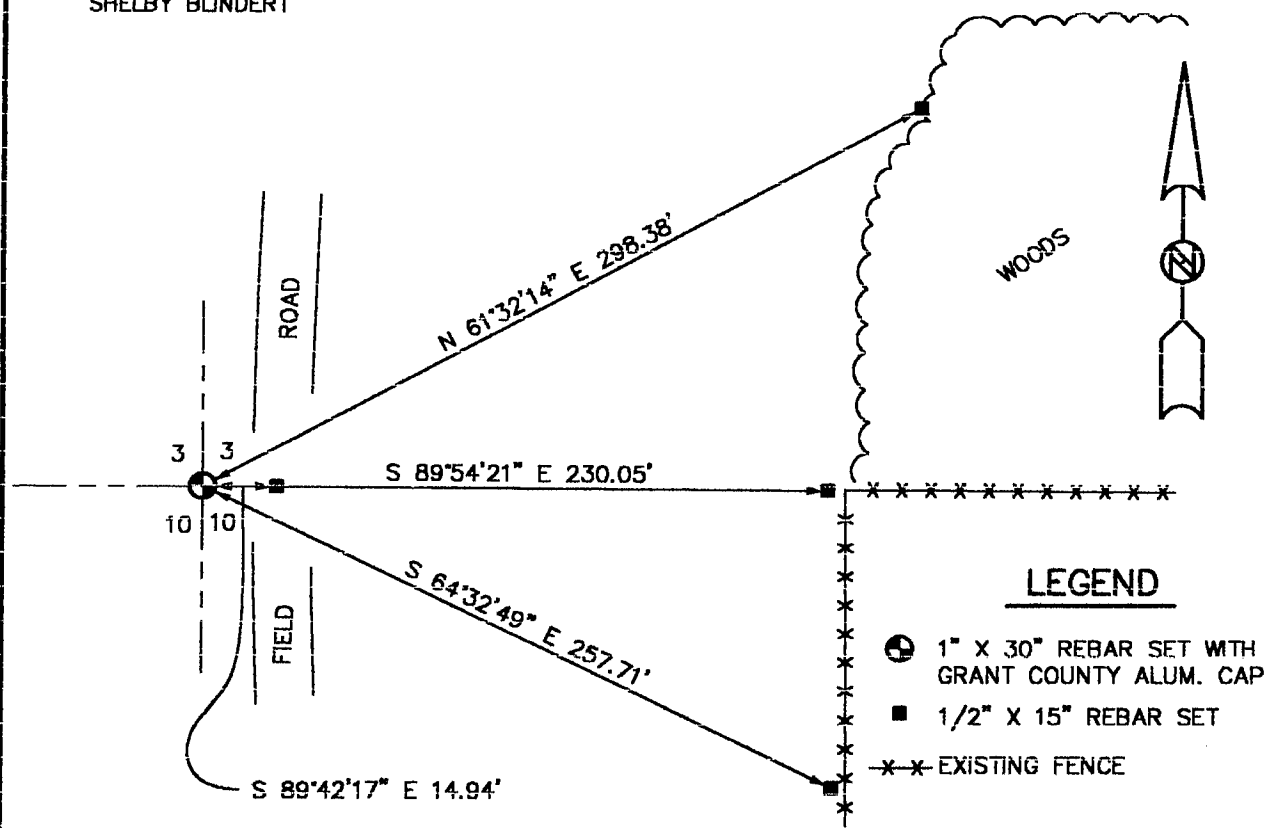
CORNER SET BASED ON THE DESCRIPTION OF LAND TO THE EAST OF THE CORNER FOR EASTING. THE NORTH WAS BASED ON THE PROJECTION OF AN EAST-WEST FENCE. VERIFIED THIS LOCATION USING G.P.S. AND E.D.M. METHODS.

DESCRIPTION OF CORNER AND WITNESS MONUMENTS, REFERENCES AND ACCESSORIES USED TO PERPETUATE THE ORIGINAL OR RE-ESTABLISHED LOCATION OF THIS CORNER:

WITNESS TO THE CORNER LOCATION:

BOBBY SEDGWICK
SHELBY BLINDERT

SKETCH:



LEGEND

- 1" X 30" REBAR SET WITH GRANT COUNTY ALUM. CAP
- 1/2" X 15" REBAR SET
- *** EXISTING FENCE

NOT TO SCALE

C:\EPSA\PROGRAM\TIE\T4NR4W\03S