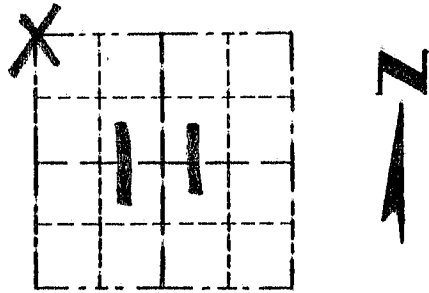


Survey Monument Record

TYPE OF MONUMENT 3/4" x 24" IRON BAR
SET WITH GRANT COUNTY CAP

CORNER NO. 25
 SECTION 11
 TOWN 4N
 RANGE 4W

FIELD BOOK: 96-04
 PAGE 15



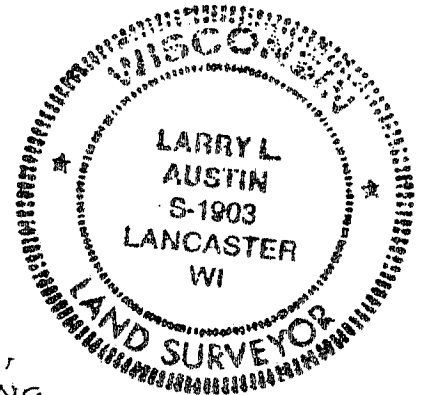
LOCATION
 (Indicated by "X")

BASIS FOR MONUMENT LOCATION

(Use reverse side if necessary)

Show info such as: History of corner, with reference to Vol. and pg., dates, surveyor; exact description of monument replaced; if location computed, by taped or EDM traverse; landowner, remarks, etc.

SEAL:



NO RECORD FOUND SINCE ORIGINAL SURVEY IN 1833 BY CLARK. NORTH-SOUTH LOCATION OF THE CORNER BASED ON DOUBLING OF "40" CORNER FROM THE NORTH; N-E-W LOCATION BASED ON PROPORTIONING 1 MILE TO THE EAST & 1/2 MILE TO THE WEST. VERIFIED THIS LOCATION BY EDM TRAVERSE OF THE AREA

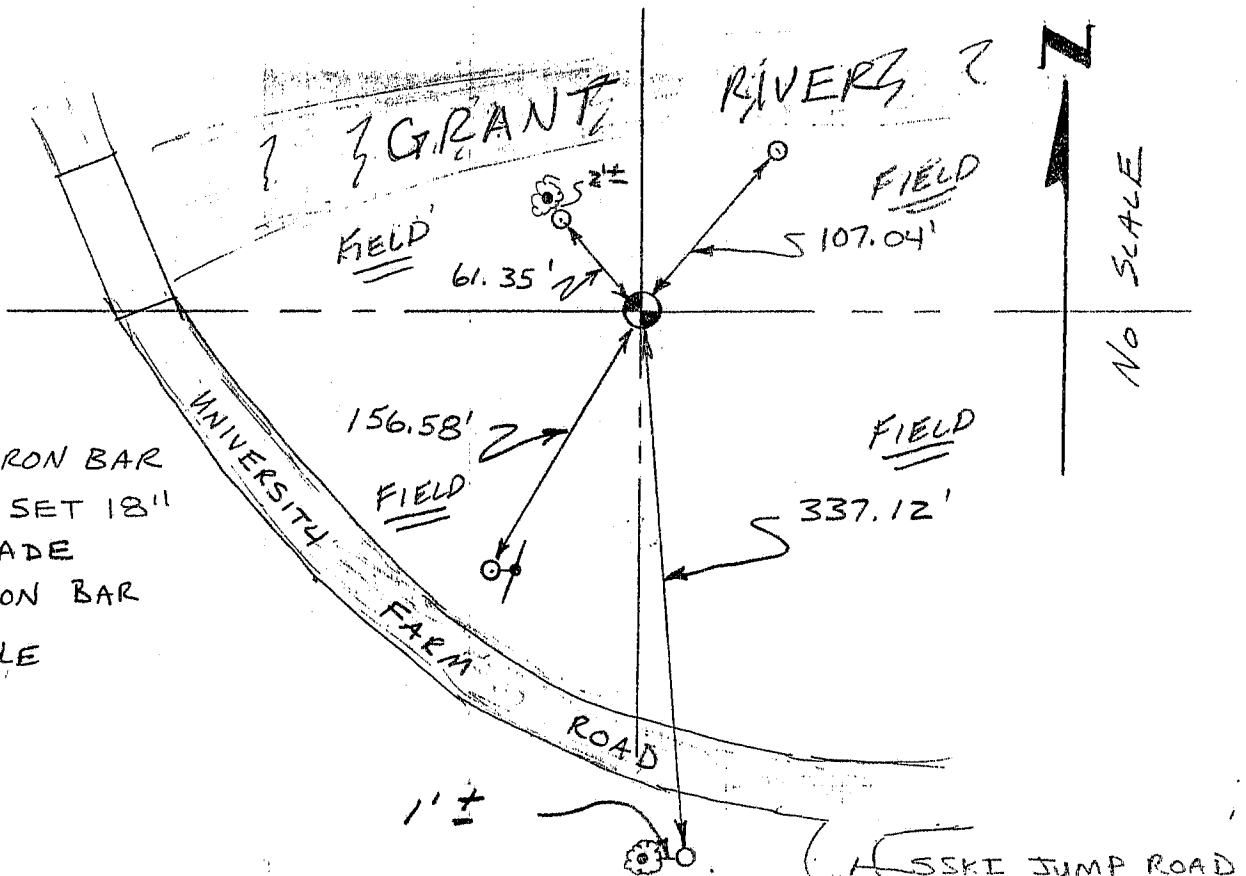
CERTIFIED CORRECT

Larry L. Austin
 Registered Land Surveyor

DATE: 7-17-96

TIE SKETCH

Show at least three (3) ties and monument



LEGEND

- ⊕ 3/4" x 24" IRON BAR WITH CAP SET 18" BELOW GRADE
- 3/8" x 15" IRON BAR
- ★ POWER POLE