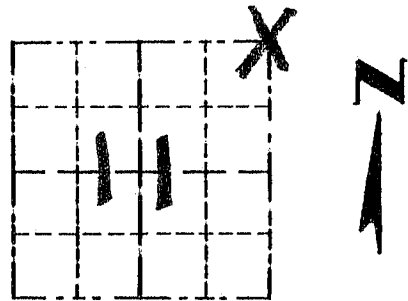


Survey Monument Record

TYPE OF MONUMENT 3/4" X 24" IRON BAR
SET WITH GRANT COUNTY CAP

CORNER NO. 23
 SECTION 11
 TOWN 4N
 RANGE 4W

FIELD BOOK: 96-04
 PAGE 15



LOCATION
 (Indicated by "X")

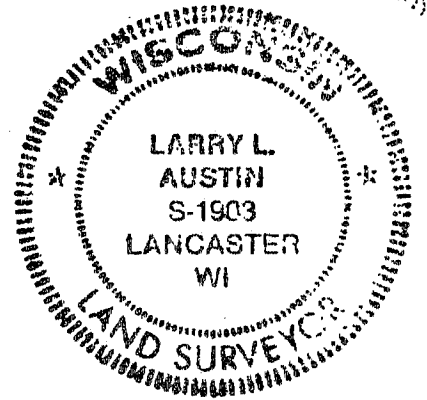
BASIS FOR MONUMENT LOCATION

(Use reverse side if necessary)

Show info such as: History of corner, with reference to Vol. and pg., dates, surveyor; exact description of monument replaced; if location computed, by taped or EDM traverse; landowner, remarks, etc.

SEAL:

NO RECORD FOUND SINCE ORIGINAL SURVEY, IN 1833. BY CLARK. I SET THE CORNER BASED ON A OCCUPATION LOCATION & VERIFIED BY E.D.M TRAVERSE OF THE AREA.



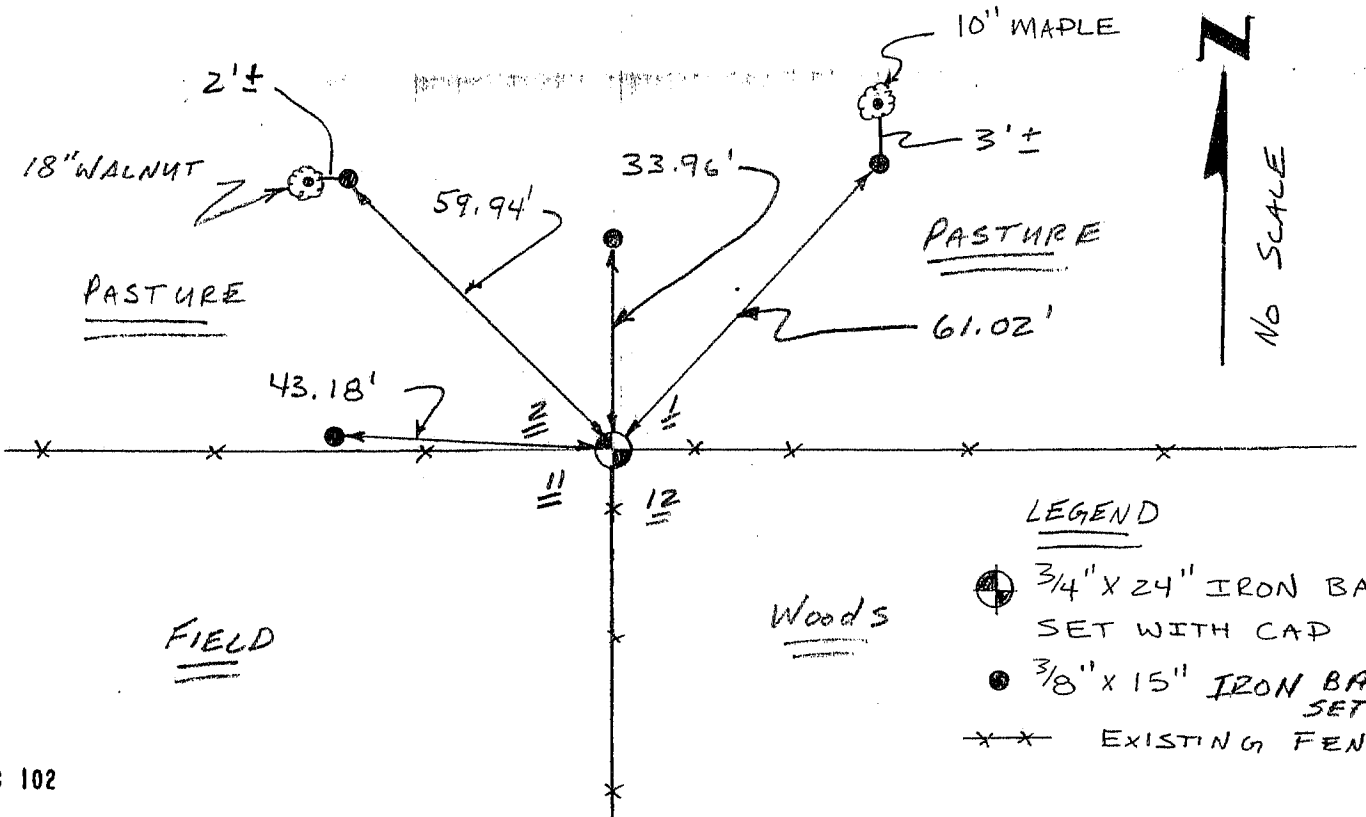
CERTIFIED CORRECT

Larry L. Austin
 Registered Land Surveyor

DATE: 7-17-96

TIE SKETCH

Show at least three (3) ties and monument



LEGEND

- 3/4" X 24" IRON BAR SET WITH CAP
- 3/8" X 15" IRON BAR SET.
- EXISTING FENCE