

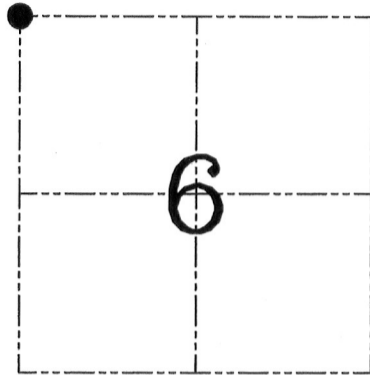
**U.S. PUBLIC LAND SURVEY MONUMENT RECORD – GRANT COUNTY, WI**  
**Section 6, Town 3 North Range 2 West, Town of Harrison**

CERTIFICATE

I, Larry L. Austin, do hereby certify that the corner location on this record was determined by me and/or under my direct supervision and that this U.S. public land survey monument record is correct and complete to the best of my knowledge and belief.

Dated this 30 day of Dec, 2005

*Larry L. Austin*  
 Larry L. Austin S-1903



● = CORNER LOCATION

HISTORY OF CORNER ESTABLISHMENT

Corner was originally set in 1832 by Lucius Lyon. In 1852 Everett found the original corner. In 1868 Barber found the corner. In 1883 Scott set new bearing trees for the corner. No other record found for this corner.

DESCRIPTION OF CORNER EVIDENCE FOUND

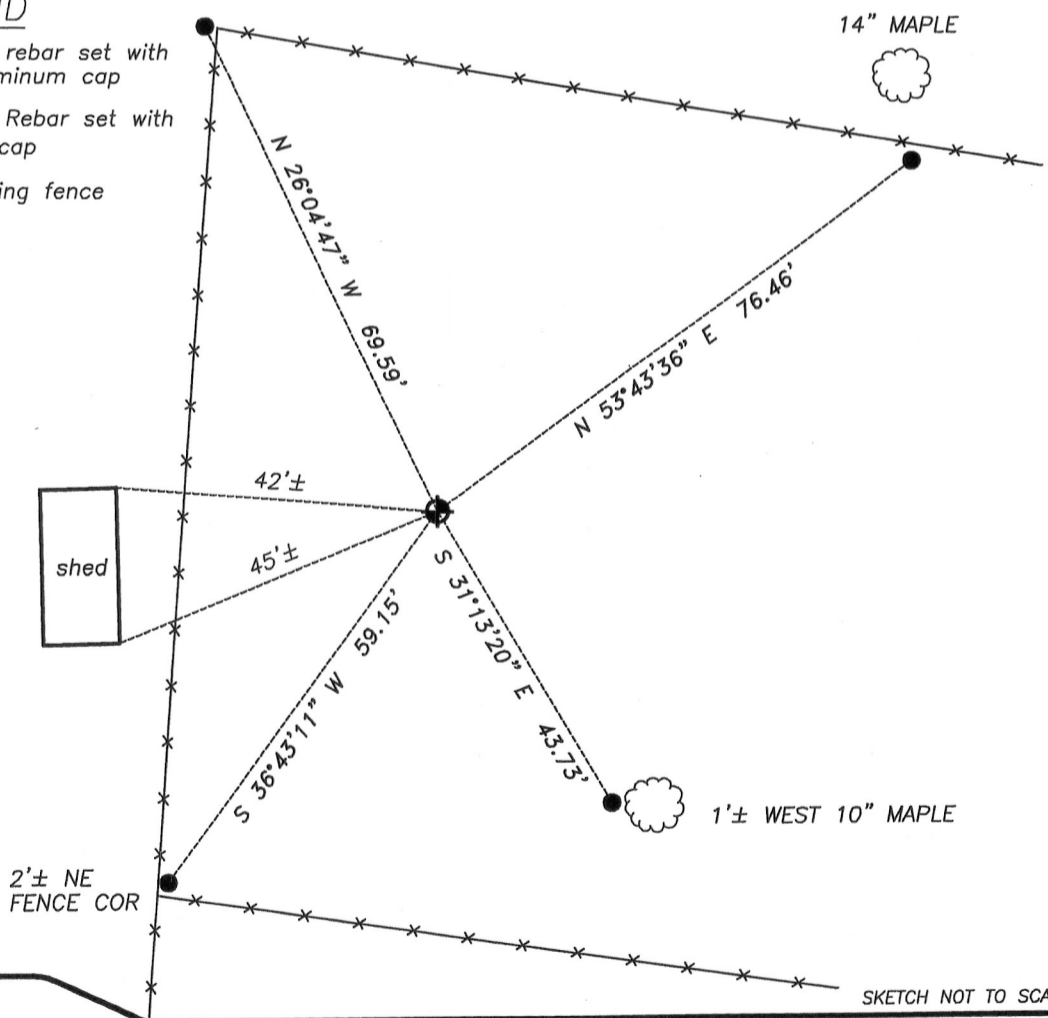
No evidence was found of the original corner. I reset the corner proportionally between all adjoining corners and verified this location by E.D.M. and G.P.S. methods.

DESCRIPTION OF CORNER AND WITNESS MONUMENTS, references and accessories used to perpetuate the original or re-established location of this corner. Witnesses to corner location Bobby Sedgwick & Shelby Blindert & Brad Digman

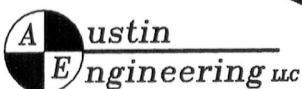
**SKETCH:**

LEGEND

- Number 8 x 30" rebar set with Grant County Aluminum cap
- Number 4 x 24" Rebar set with red plastic "TIE" cap
- x— Approximate existing fence



SKETCH NOT TO SCALE



4211 HWY 81 E, LANCASTER, WI 53813  
 PHONE 608-723-6363 FAX 608-723-6702

JOB NUMBER 04S318  
 G:\T3NR2W\06  
 H:\TIE\T3NR2W\13

DRAWN BY: SW AUSTIN  
 APPROVED: LL AUSTIN