

# U.S. PUBLIC LAND SURVEY MONUMENT RECORD - GRANT COUNTY, WI

Section 36, Town 4 North, Range 3 West, Town of South Lancaster (a)

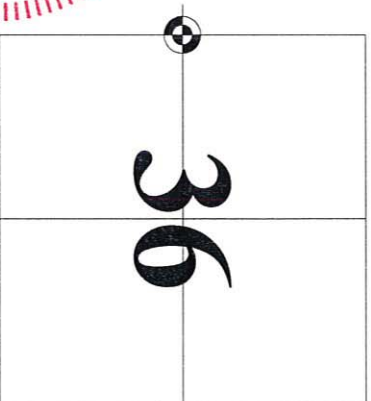
NOTE: This form is intended and designed to fulfill all requirements of Wisconsin Administrative Code Chapter A-E 7.08, U.S. Public Land Survey Monument Record (3) (a) (b) (c) (d) (e) (f) (g) (h) (i). "An additional sheet may be added if necessary to conform with said requirements."

CERTIFICATE: (i)

I, John Krebs, do hereby certify that the corner location on this record was determined by me and/or under my direct supervision and that this U.S. Public Land Survey Monument Record is correct and complete to the best of my knowledge and belief.

Dated this 4th day of April, 2012.

*John Krebs* 4-23-12  
 John Krebs, S-1878



CORNER LOCATION

**HISTORY OF CORNER ESTABLISHMENT:**

Corner was established from 1939 highway plans for USH '61'.  
 Michael S. O'Keefe, S-2743, located corner on July 6, 2011, before road construction began.

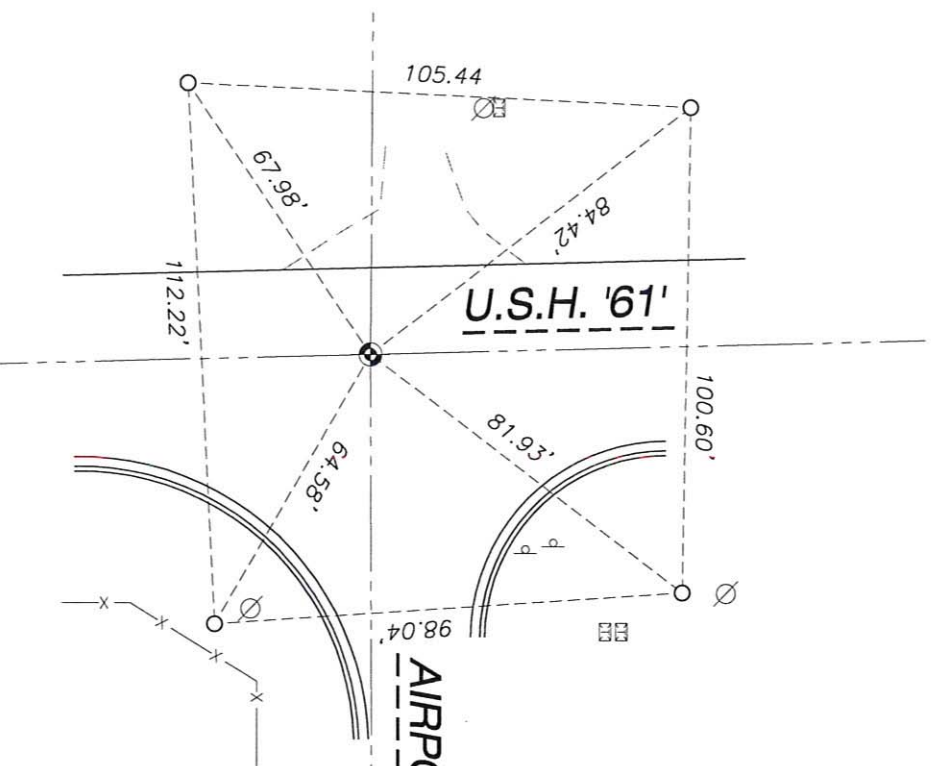
**DESCRIPTION OF CORNER EVIDENCE FOUND:**

Monument was removed during road construction. Replaced corner per location by Michael S. O'Keefe. Set cotton pin at the Section Corner and set four new ties as shown hereon.

Witnesses to corner location \_\_\_\_\_

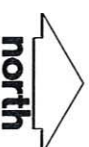
**DESCRIPTION OF CORNER AND WITNESS MONUMENTS:** references and accessories used to perpetuate the original or re-established location of this corner. (b) (f) (g) (h) (c) (d) (e)

**SKETCH:**

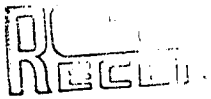


**LEGEND**

- GOVERNMENT CORNER
- 3/4" x 24" REBAR SET (1.50 LBS/LF)
- POWER POLE W/GUY
- TELEPHONE PEDESTAL
- SIGN
- SECTION LINE
- EDGE OF PAVEMENT
- EDGE OF GRAVEL
- CONCRETE CURB & GUTTER
- FENCE LINE



SHEET 1 OF 1

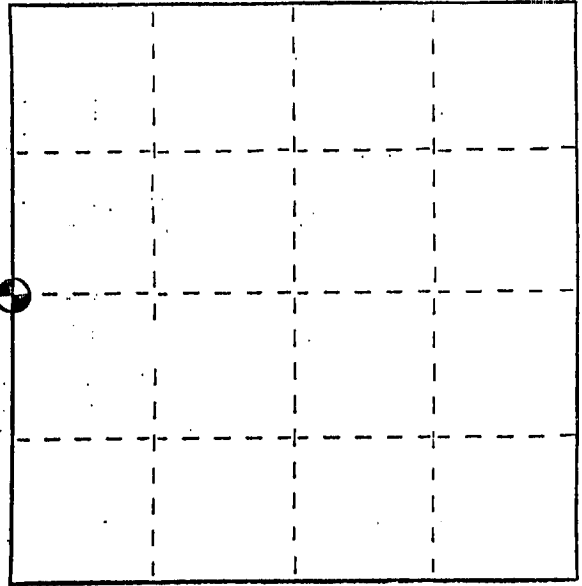


SEP 8 1986 U. S. PUBLIC LAND SURVEY MONUMENT RECORD

INSTRUCTIONS: This record shall show the location of the corner and shall include all of the following nine elements (a through i).

- (a) Identify the corner by reference to the U.S. public land survey system.
- ⊙ = Corner monument restored.

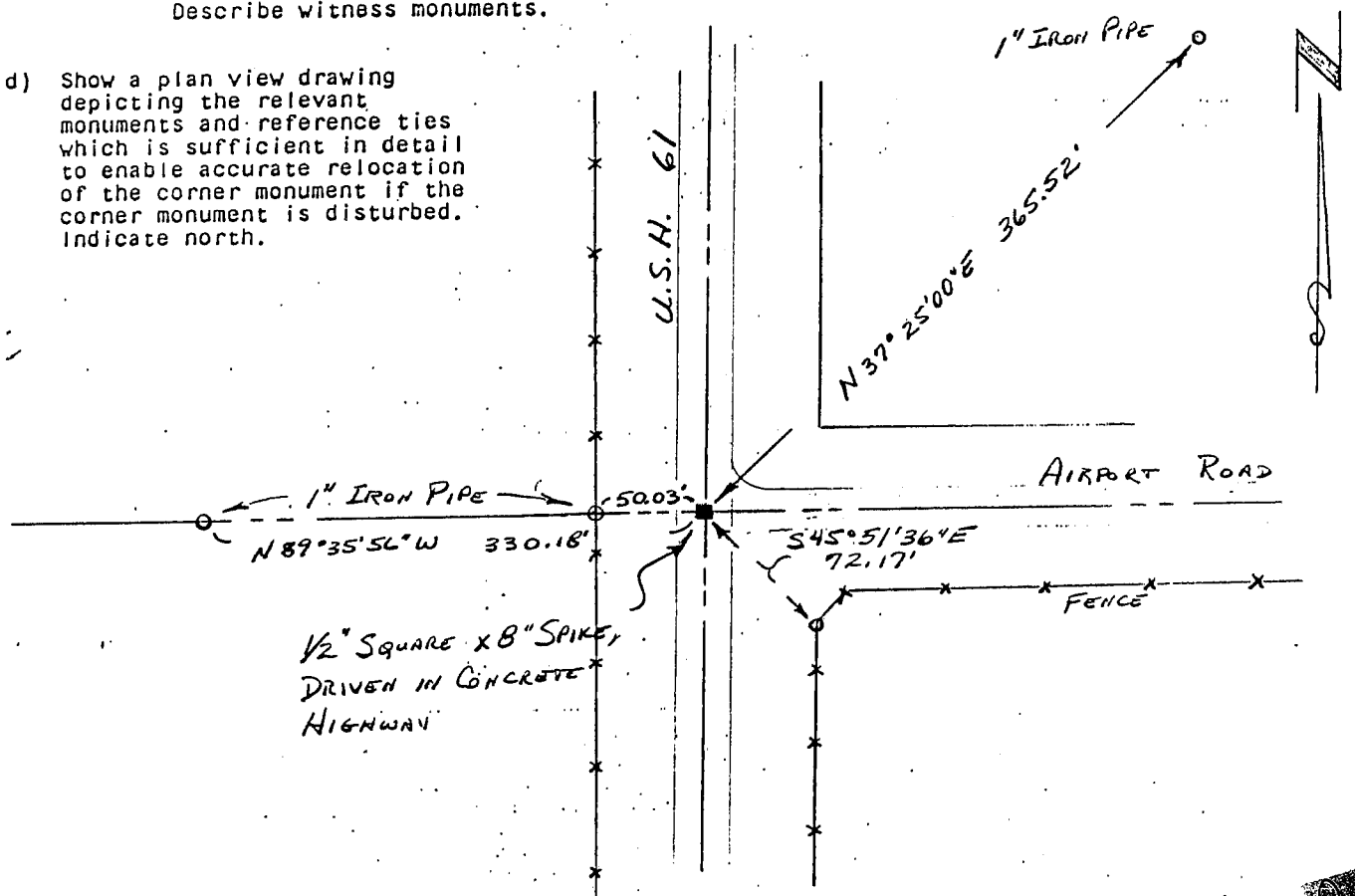
West 1/4 corner of Section 36, Town 4 North, Range 3 West, South Lancaster Township, Grant County, Wisconsin.



- (b) Describe any record evidence, monument evidence, occupational evidence, testimonial evidence or any other material evidence you considered, and whether the monument was found or placed.  
Monument set from ties established from the 1939 highway plans for USH '61'.  
Location verified from proportionate measurements from an EDM traverse of the area.

- (c) In the plan view drawing below, provide reference ties to at least 4 witness monuments, or, if the location is within a municipality, to at least 2 witness monuments. (Witness monuments shall be made of concrete, natural stone, iron or other equally durable material.) Describe witness monuments.

- (d) Show a plan view drawing depicting the relevant monuments and reference ties which is sufficient in detail to enable accurate relocation of the corner monument if the corner monument is disturbed. Indicate north.



- (e) Describe any material discrepancy between the location of the corner as restored or reestablished and the location of that corner as previously restored or reestablished by distance and direction. Show the discrepancy on the plan view drawing under (d) above. Show the distances between the corner as previously restored or reestablished and (1) the corner as restored or reestablished, and (2) to at least 2 of the witness monuments shown on the drawing in (d) above.

Retracement of a survey by David Krohn and Homer Ralph would put this corner 17.05' farther South.

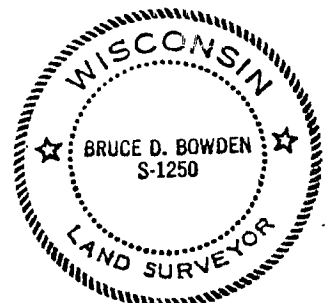
- (f) Was the corner restored through acceptance of (1) an obliterated evidence location, or, (2) a found perpetuated location?

(1) an obliterated evidence location

- (g&h) Was the corner reestablished through lost corner proportionate methods? If so, show the method, including the directions and distances to other public land survey corners used as evidence or used for proportioning in determining the corner location?

No

Affix Land Surveyor Seal



(i) I, Bruce D. Bowden

(type or print name) certify that the corner location shown on this record was determined by me or under my direction and control and that this U.S. Public Land Survey Monument Record is correct and complete to the best of my knowledge and belief.

Bruce D. Bowden  
Signature

Sept 3, 1986  
Date