

U.S. PUBLIC LAND SURVEY MONUMENT RECORD - GRANT COUNTY, WI

Section 36, Town 4 North, Range 3 West, Town of South Lancaster

(a)

NOTE: This form is intended and designed to fulfill all requirements of Wisconsin Administrative Code, Chapter A-E 7.08, U.S. Public Land Survey Monument Record (3) (a) (b) (c) (d) (e) (f) (g) (h) (i). "An additional sheet may be added if necessary to conform with said requirements."

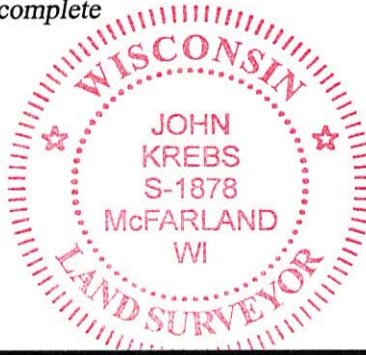
CERTIFICATE:

(i)

I, John Krebs, do hereby certify that the corner location on this record was determined by me and/or under my direct supervision and that this U.S. Public Land Survey Monument Record is correct and complete to the best of my knowledge and belief.

Dated this 4th day of April, 2012.

John Krebs 4-23-12
 John Krebs, S-1878



CORNER LOCATION

HISTORY OF CORNER ESTABLISHMENT:

Sean M. Walsh set monument on May 20, 1994.
 Michael S. O'Keefe, S-2743, located corner on July 6, 2011, before road construction began.

DESCRIPTION OF CORNER EVIDENCE FOUND:

(b) (f) (g) (h)

Corner was removed during road construction. Replaced corner per location by Michael O'Keefe. Found two ties per tie sheet by Sean M. Walsh, S-2016, dated May 20, 1994. I set cotton pin at the Section Corner and set two new ties as shown hereon.

Witnesses to corner location _____

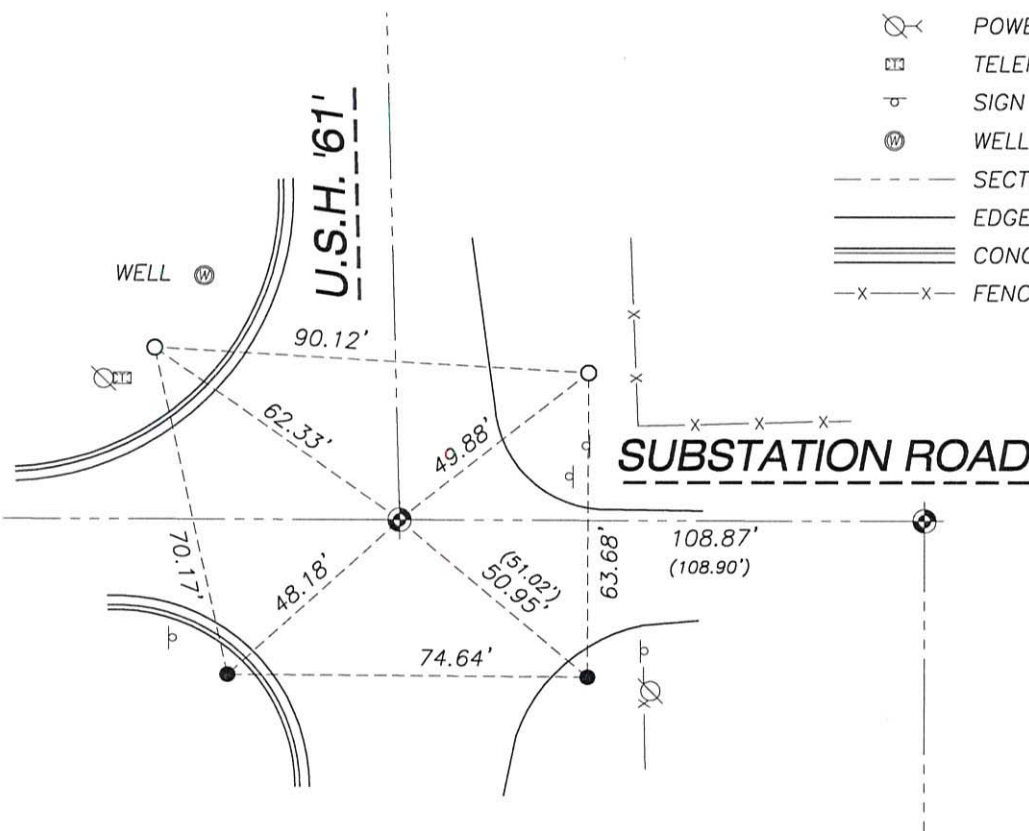
DESCRIPTION OF CORNER AND WITNESS MONUMENTS: references and accessories used to perpetuate the original or re-established location of this corner.

(c) (d) (e)

SKETCH:

LEGEND

- GOVERNMENT CORNER
- 3/4" REBAR FOUND
- 3/4" x 24" REBAR SET (1.50 LBS/LF)
- POWER POLE W/GUY
- TELEPHONE PEDESTAL
- SIGN
- WELL
- SECTION LINE
- EDGE OF PAVEMENT
- CONCRETE CURB & GUTTER
- FENCE LINE



SCALE: 1" = 40'

SHEET 1 OF 1

123

J:\2011\114660\dwg\11-4660 WisDOT Dickeyville.dwg

U.S. PUBLIC LAND SURVEY MONUMENT RECORD - GRANT COUNTY, WI

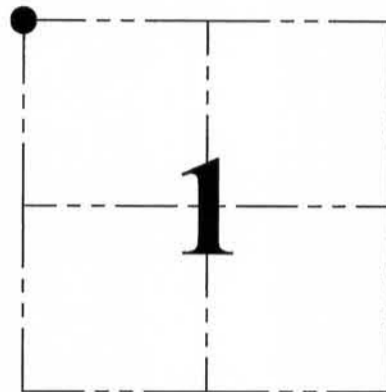
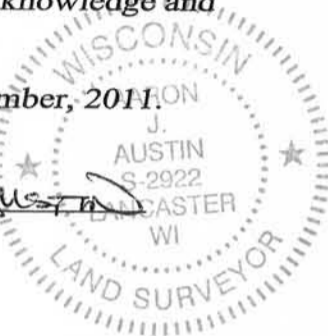
Section 1, Town 3 North Range 3 West, Town of Potosi

CERTIFICATE:

I, Aaron J. Austin, do hereby certify that the corner location on this record was determined by me and/or under my direct supervision and that this U.S. Public Land Survey Monument Record is correct and complete to the best of my knowledge and belief.

Dated this 9th day of December, 2011.

Aaron J. Austin
 Aaron J. Austin, S-2922



● = CORNER LOCATION

HISTORY OF CORNER ESTABLISHMENT:

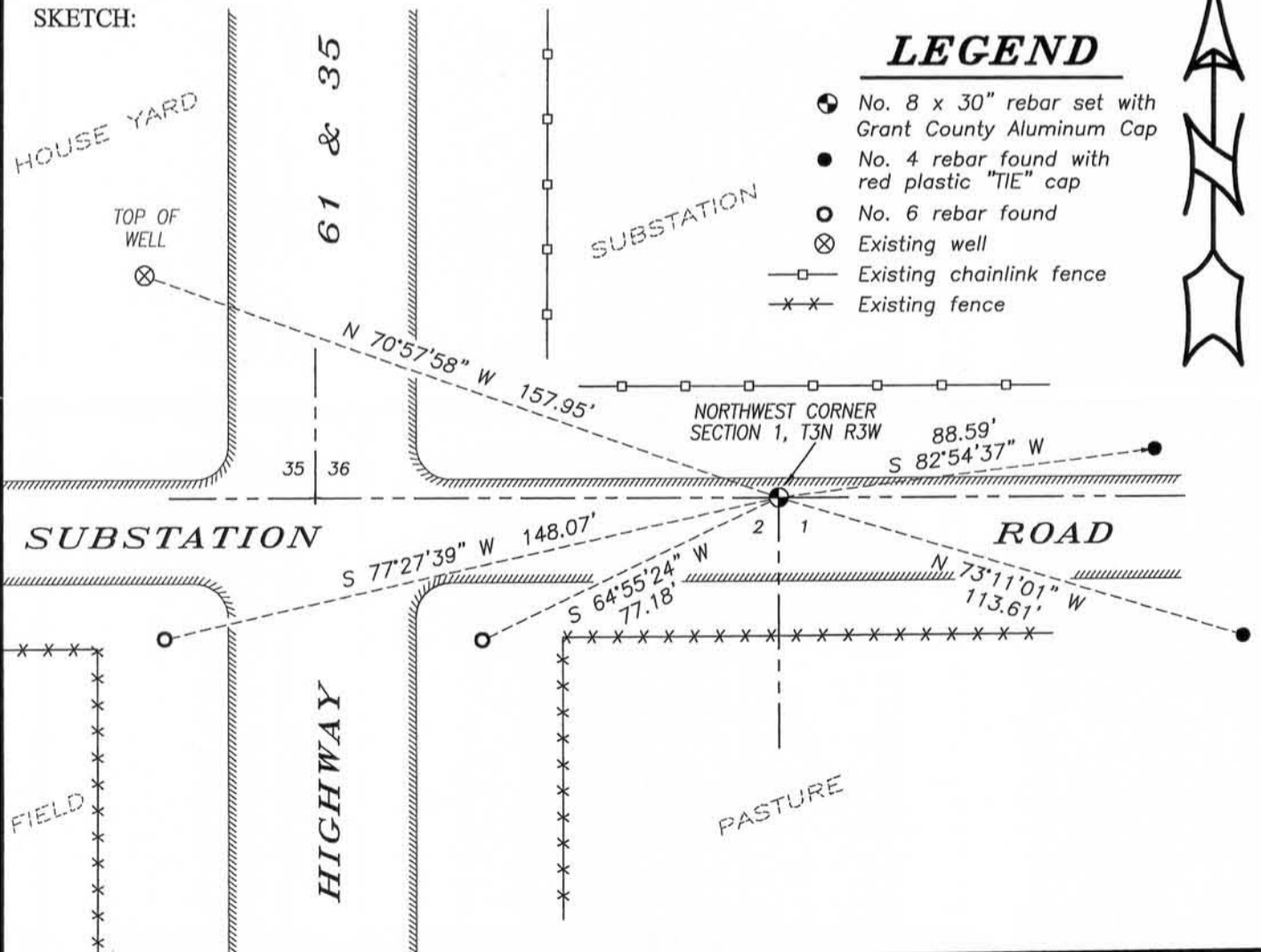
Corner was originally set in 1833 by Robert Clark.
 In 1852 John Everett tied to the corner and found the original.
 In 2000 Larry Austin reset the corner and filed a tie sheet.

DESCRIPTION OF CORNER EVIDENCE FOUND:

I reset the corner from found ties as established by Larry Austin.
 I verified this location by E.D.M. and G.P.S. methods.

DESCRIPTION OF CORNER AND WITNESS MONUMENTS, references and accessories used to perpetuate the original or re-established location of this corner. Witnesses to corner location Bobby Sedgwick & Shelby Blindert

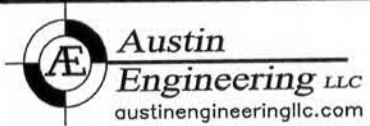
SKETCH:



LEGEND

- No. 8 x 30" rebar set with Grant County Aluminum Cap
- No. 4 rebar found with red plastic "TIE" cap
- No. 6 rebar found
- ⊗ Existing well
- Existing chainlink fence
- x-x- Existing fence

SKETCH NOT TO SCALE



4211 HWY 81 E, LANCASTER, WI 53813
 PHONE: 608-723-6363 FAX: 608-723-6702

JOB NO: 11s246
 G:\T3NR2W\06
 H:\TIE\T3NR3W\03-B

FIELDBOOK: TDSR
 DRAWN BY: AJ AUSTIN
 CREW: BS-SB

DEC 14 2011

GRANT COUNTY CERTIFIED LAND CORNER

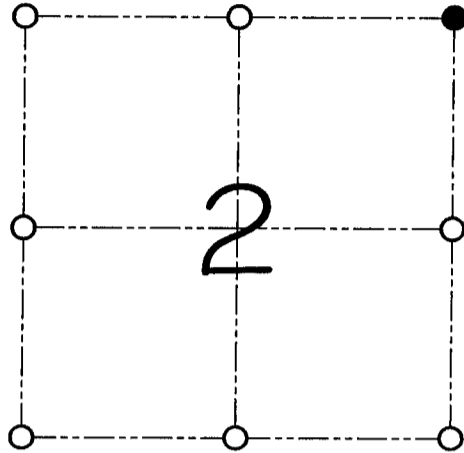
CORNER NUMBER 03

CERTIFICATE:

I, Larry L. Austin, do hereby certify that on the 7th day of February, 2000, I found no evidence of the Northeast corner of Section 2, Town 3 North, Range 3 West, of the 4th Principal Meridian, and I re-established said corner according to the Wisconsin statutes as shown and described hereon.

Dated this 21st day of February, 2000

Larry L. Austin
Larry L. Austin S-1903



● = CORNER LOCATION

**NORTHEAST CORNER OF
SECTION 2, T 3 N R 3 W
TOWN OF POTOSI**

HISTORY OF ORIGINAL CORNER ESTABLISHMENT:

Corner was originally set in 1833 by Robert Clark.
In 1852 John Everett tied to the corner and found the original.

DESCRIPTION OF CORNER EVIDENCE FOUND:

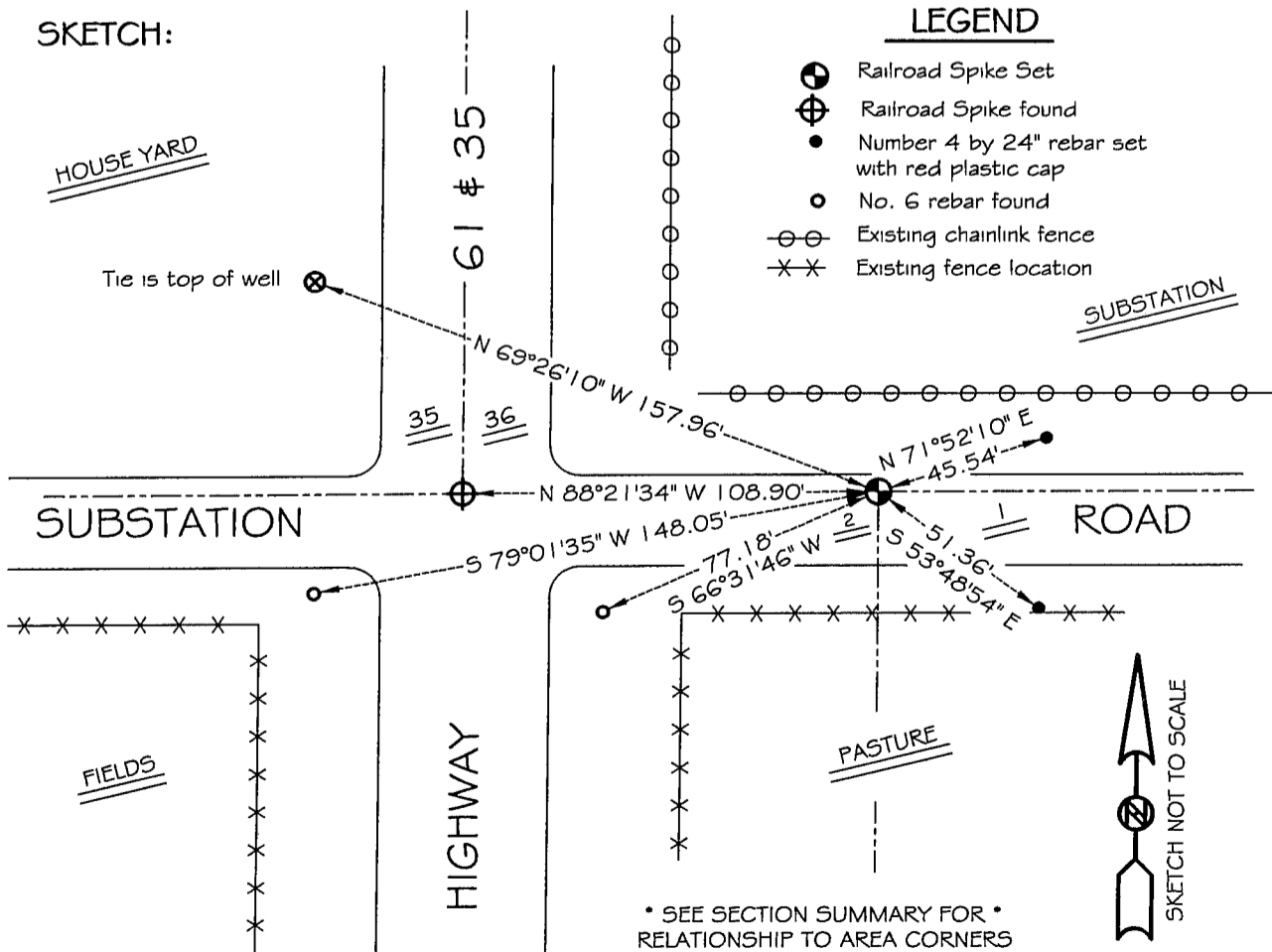
I found no evidence of the original corner. I reset the corner at the recorded offset from the Southwest corner of Section 36. Verified this location using E.D.M. and G.P.S. methods.

DESCRIPTION OF CORNER AND WITNESS MONUMENTS, references and accessories used to perpetuate the original or re-established location of this corner
WITNESS TO THE CORNER LOCATION: SHELBY BLINDERT & BOBBY SEDGWICK

SKETCH:

LEGEND

- ⊕ Railroad Spike Set
- ⊕ Railroad Spike found
- Number 4 by 24" rebar set with red plastic cap
- No. 6 rebar found
- ⊖ Existing chainlink fence
- ×× Existing fence location



* SEE SECTION SUMMARY FOR *
RELATIONSHIP TO AREA CORNERS

GOVERNMENT CORNER RECORD

Southeast CORNER, SECTION 35, TOWNSHIP 4 NORTH, RANGE 3 EAST - WEST,

TOWN, CITY OR VILLAGE OF South Lancaster

TYPE OF MONUMENT: Railroad Spike Set ELEVATION - M.S.L. DATUM _____

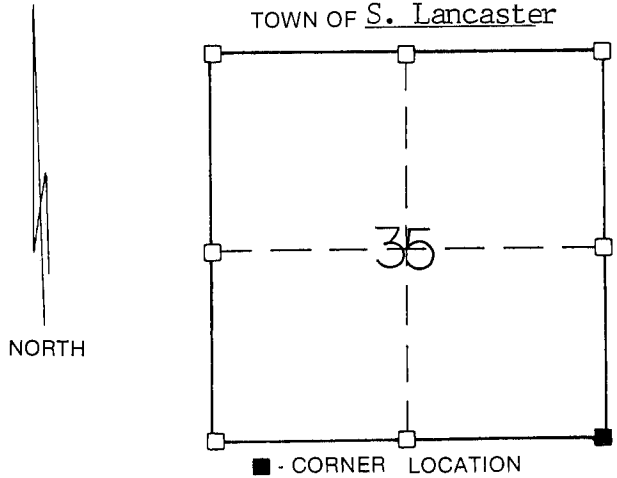
WITNESSES TO CORNER LOCATION

Sean M. Walsh

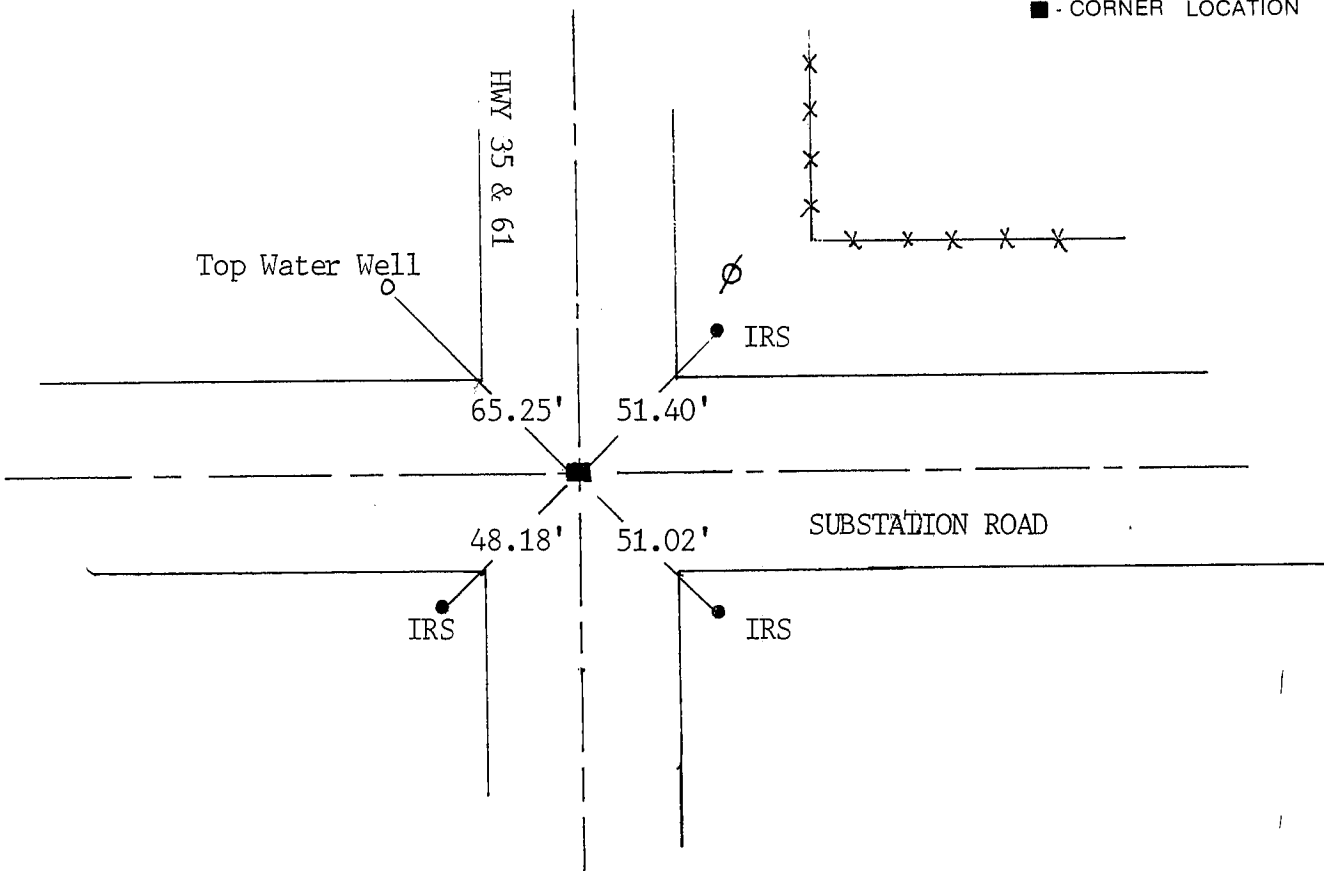
Scott H. Chyko

SECTION 35, T. 4 N, R. 3 EW

TOWN OF S. Lancaster



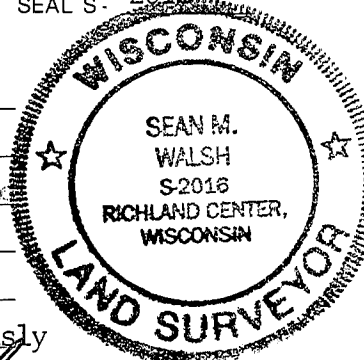
TIE SKETCH
(SHOW ALL HELPFUL FEATURES)



SURVEYOR'S CERTIFICATE

SEAL S- 2016

I, Sean M. Walsh, DO HEREBY CERTIFY THAT I have monumented the above corner according to the information contained hereon and that this information is correct and true to the best of my information, knowledge and belief. I established this corner at a location which is the point of intersection of the East line of Section 35 and the South line of the township. The East line of the Northeast 1/4 of the section was previously established by Bruce Bowden in 1986.



DATED THIS 20 DAY OF MAY, 19 94

Sean M. Walsh
REGISTERED LAND SURVEYOR