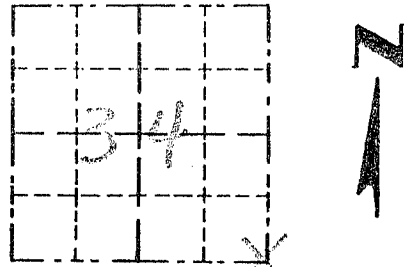


Survey Monument Record

TYPE OF MONUMENT 3/4" X 24" IRON  
BAR SET W/ CAP

CORNER NO. 125  
 SECTION 34  
 TOWN 4N  
 RANGE 3W

FIELD BOOK: 96-01  
 PAGE 18-19



LOCATION  
 (Indicated by "X")

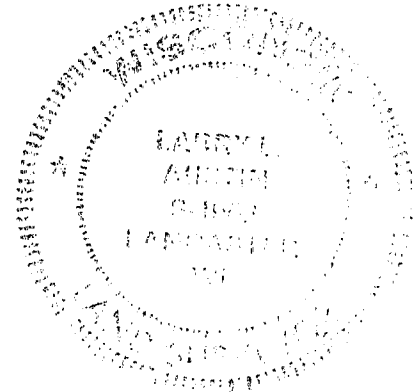
BASIS FOR MONUMENT LOCATION

(Use reverse side if necessary)

Show info such as: History of corner, with reference to Vol. and pg., dates, surveyor; exact description of monument replaced; if location computed, by taped or EDM traverse; landowner, remarks, etc.

SEAL:

CORNER SET IN 1832 BY SIBLEY. NO RECORD OF CORNER FOUND SINCE ORIGINAL SURVEYS. I SET THE CORNER AT THE RECORDED OFFSET FROM THE NORTHEAST CORNER OF SECTION 3 T3N R3W. VERIFIED THIS LOCATION USING EDM METHODS.



CERTIFIED CORRECT

*Randy L. Aust*  
 Registered Land Surveyor

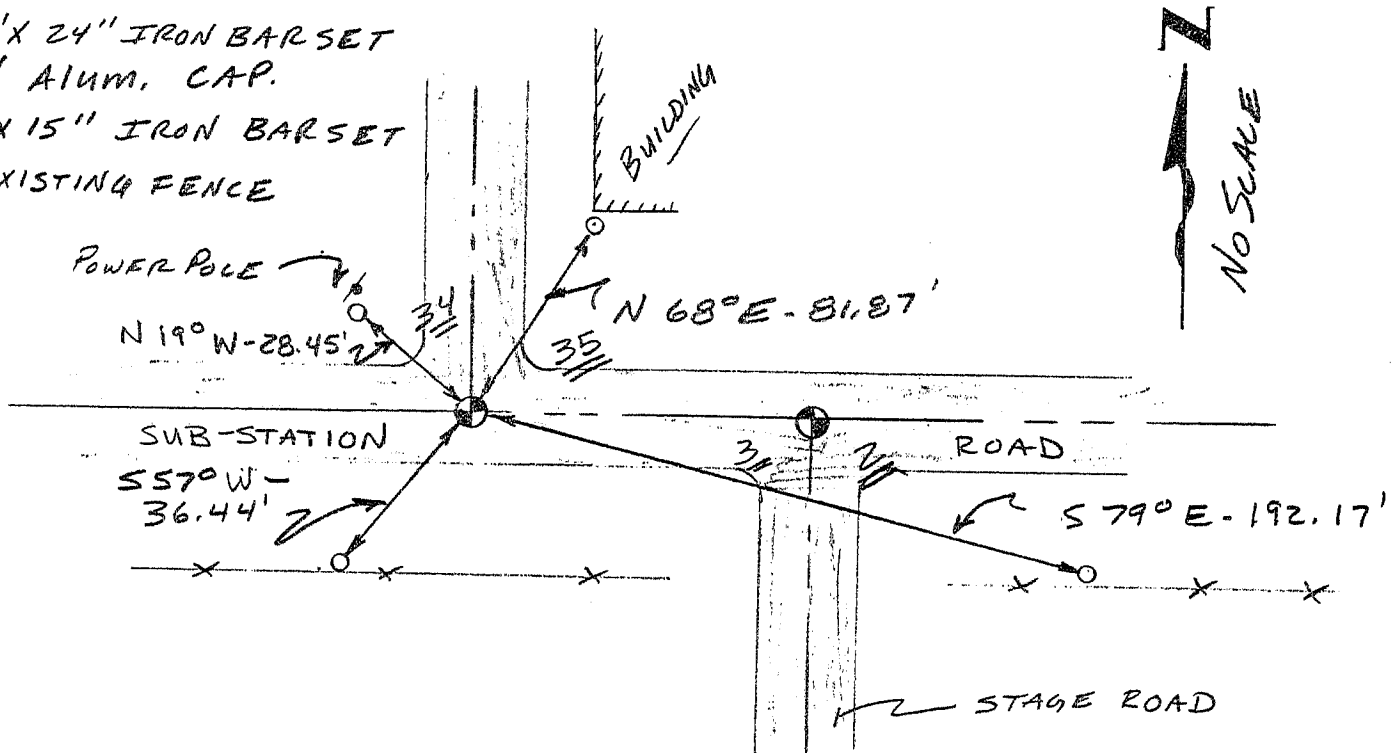
DATE: 12/20/97

TIE SKETCH

Show at least three (3) ties and monument

LEGEND

- 3/4" X 24" IRON BAR SET W/ ALUM. CAP.
- 1/2" X 15" IRON BAR SET
- XX EXISTING FENCE

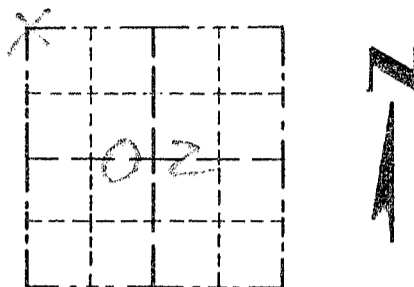


Survey Monument Record

TYPE OF MONUMENT 3/4" X 24" IRON  
BAR W/ CAP

CORNER NO. 05  
SECTION 02  
TOWN 3N  
RANGE 3W1

FIELD BOOK: 96-01  
PAGE 18-19



LOCATION  
(Indicated by "X")

BASIS FOR MONUMENT LOCATION

(Use reverse side if necessary)

Show info such as: History of corner, with reference to Vol. and pg. dates, surveyor; exact description of monument replaced; if location computed, by taped or EDM traverse; landowner, remarks, etc.

SEAL:

CORNER SET IN 1833 BY ROBERT CLARK. NO RECORD OF CORNER FOUND SINCE ORIGINAL SURVEYS. I SET THE CORNER AT AN OCCUPIED LOCATION. VERIFIED THIS LOCATION USING EDM METHODS.



CERTIFIED CORRECT

*James L. Austin*  
Registered Land Surveyor

DATE: 12-20-97

TIE SKETCH

Show at least three (3) ties and monument

LEGEND

- ⊕ 3/4" X 24" IRON BAR SET W/ ALUM. CAP
- 1/2" X 15" IRON BAR SET

