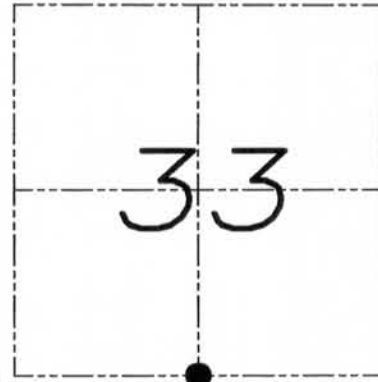


# U.S. PUBLIC LAND SURVEY MONUMENT RECORD

Section 33, Town 4 North Range 3 West, Town of South Lancaster, Grant County, Wisconsin

## CERTIFICATE

I, Larry L. Austin, do hereby certify that the corner location on this record was determined by me and/or under my direct supervision and that this U.S. public land survey monument record is correct and complete to the best of my knowledge and belief.



● = CORNER LOCATION

*Larry L. Austin*  
 Larry L. Austin, S-1903



## HISTORY OF CORNER

Corner was originally set in 1832 by Lyon. In 1877 Barber found evidence of the original corner. No other record of the corner was found.

## CORNER EVIDENCE FOUND

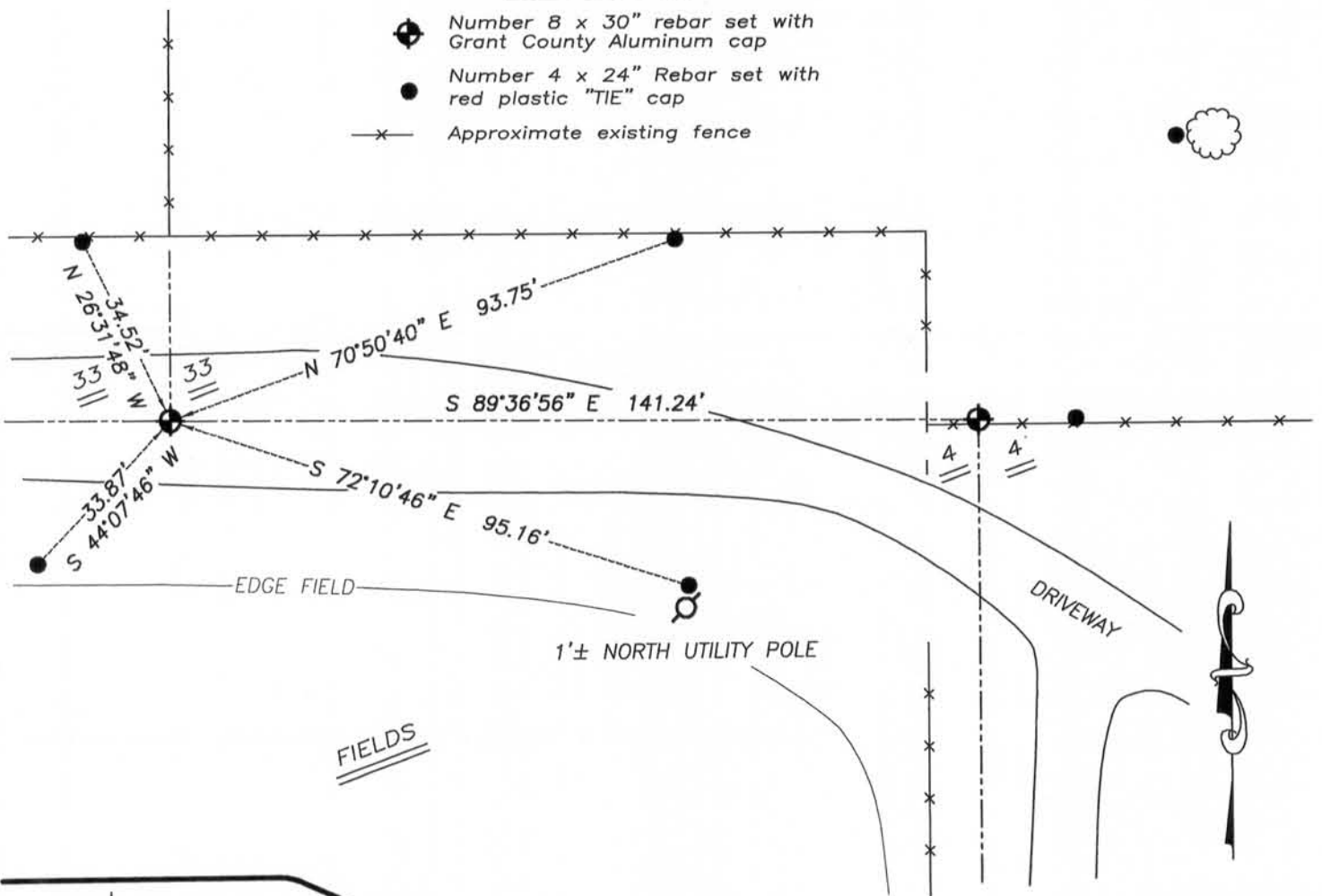
I set the corner at an occupied location and accepted it after an EDM & GPS traverse of the area. Verified this location after measuring to all occupied and monumented corners along the South line of Section 33.

DESCRIPTION OF CORNER AND WITNESS MONUMENTS, references and accessories used to perpetuate the original or re-established location of this corner. Witnesses to monument location Bobby Sedgwick & Brad Digman & Shelby Blindert

## SKETCH:

### LEGEND

- Number 8 x 30" rebar set with Grant County Aluminum cap
- Number 4 x 24" Rebar set with red plastic "TIE" cap
- x— Approximate existing fence



NOT TO SCALE



**Austin Engineering LLC**  
 austinengineeringllc.com

4211 HWY 81 E, LANCASTER, WI 53813  
 PHONE: 608-723-6363 FAX: 608-723-6702

JOB NUMBER 10S036-PIERCE  
 FIELDBOOK: TDSR, 2911  
 G:\T3NR3W\T3NR3W  
 H:\TIE\T4NR3W\128

DRAWN BY: SW AUSTIN  
 APPROVED: LL AUSTIN

128

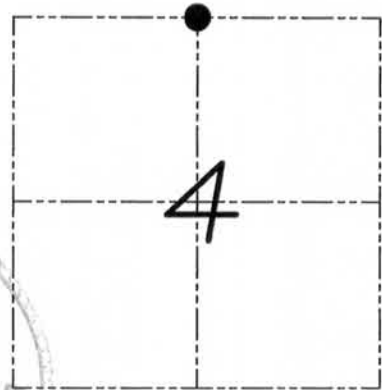
FEB 23 2011

# U.S. PUBLIC LAND SURVEY MONUMENT RECORD

Section 4, Town 3 North Range 3 West, Town of Potosi, Grant County, Wisconsin

## CERTIFICATE

I, Larry L. Austin, do hereby certify that the corner location on this record was determined by me and/or under my direct supervision and that this U.S. public land survey monument record is correct and complete to the best of my knowledge and belief.



*Larry L. Austin*  
Larry L. Austin, S-1903

2/18/11  
date



● = CORNER LOCATION

## HISTORY OF CORNER

Corner was never originally set.  
No other record of the corner was found.

## CORNER EVIDENCE FOUND

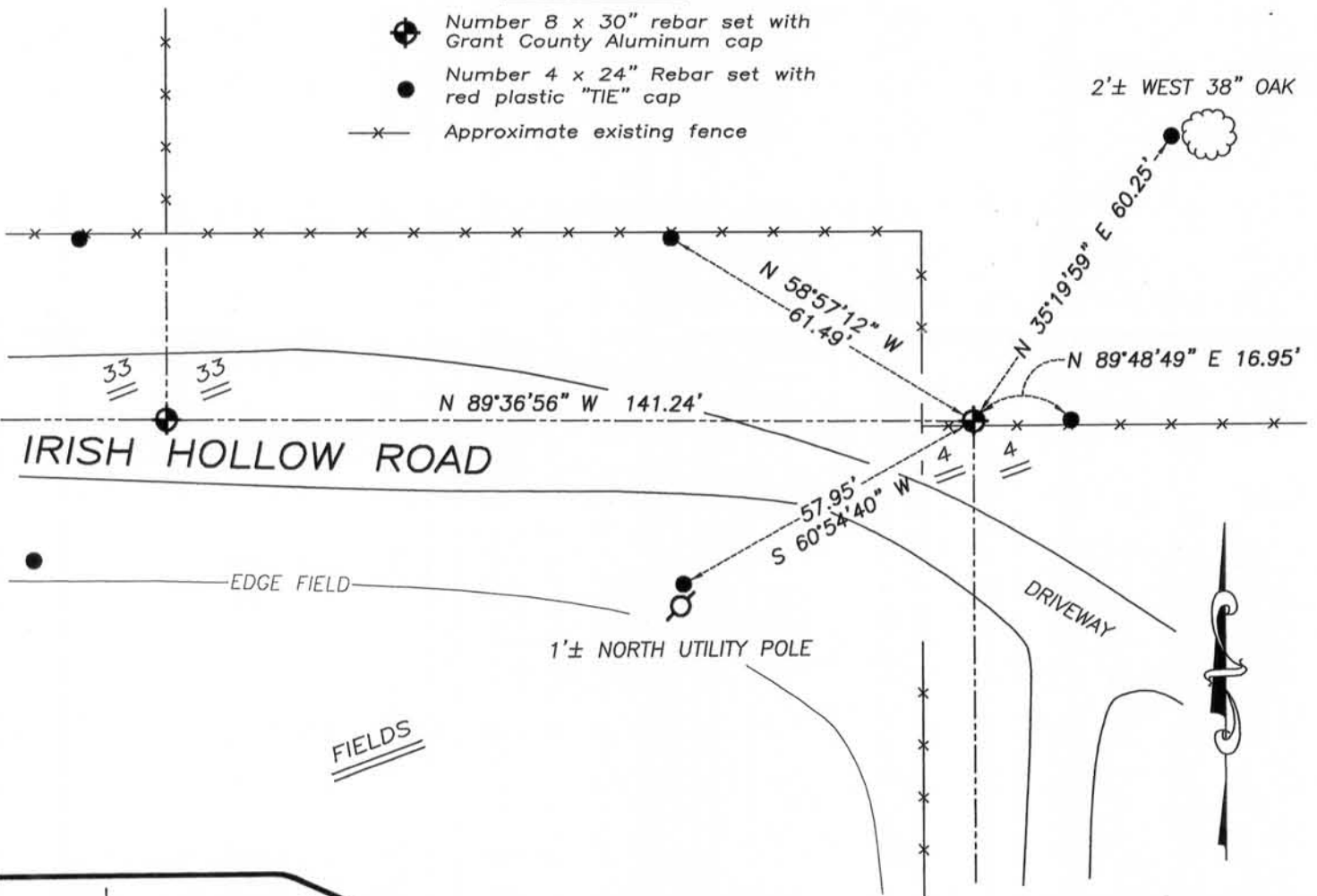
I set the corner at the proportioned offset from the South 1/4 of Section 33. This location was East of an existing fence. A local landowner stated that the fence was moved West the last time it was replaced. Verified this location using EDM & GPS methods.

DESCRIPTION OF CORNER AND WITNESS MONUMENTS, references and accessories used to perpetuate the original or re-established location of this corner. Witnesses to monument location Bobby Sedgwick & Brad Digman & Shelby Blindert

## SKETCH:

### LEGEND

- Number 8 x 30" rebar set with Grant County Aluminum cap
- Number 4 x 24" Rebar set with red plastic "TIE" cap
- x- Approximate existing fence



NOT TO SCALE



**Austin Engineering LLC**  
austinengineeringllc.com

4211 HWY 81 E, LANCASTER, WI 53813  
PHONE: 608-723-6363 FAX: 608-723-6702

JOB NUMBER 10S036-PIERCE  
FIELDBOOK: TDSR, 2911  
G:\T3NR3W\T3NR3W  
H:\TIE\T3NR3W\08

DRAWN BY: SW AUSTIN  
APPROVED: LL AUSTIN

08

FEB 23 2011