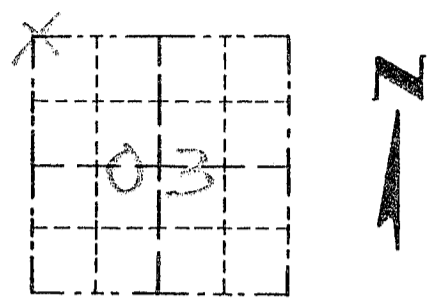


Survey Monument Record

TYPE OF MONUMENT 3/4" X 24" IRON  
BAR SET

CORNER NO. 07  
SECTION 03  
TOWN 3N  
RANGE 3W

FIELD BOOK: 96-01  
PAGE (19)

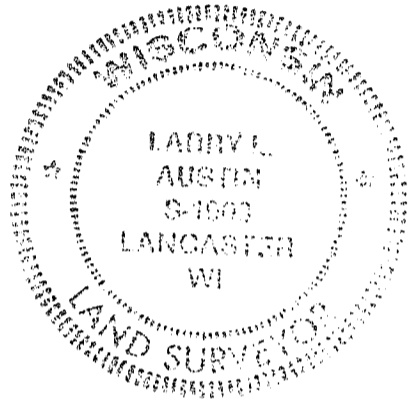


BASIS FOR MONUMENT LOCATION

(Use reverse side if necessary)  
Show info such as: History of corner, with reference to Vol. and pg., dates, surveyor; exact description of monument replaced; if location computed, by taped or EDM traverse; landowner, remarks, etc.

CORNER SET IN 1833 BY ROBERT CLARK. NO RECORD OF CORNER FOUND SINCE ORIGINAL SURVEYS. I SET THE CORNER BASED ON THE RECORDED OFFSET FROM THE SOUTHWEST CORNER OF SECTION 34, T4N R3W. VERIFIED THIS LOCATION USING EDM METHODS.

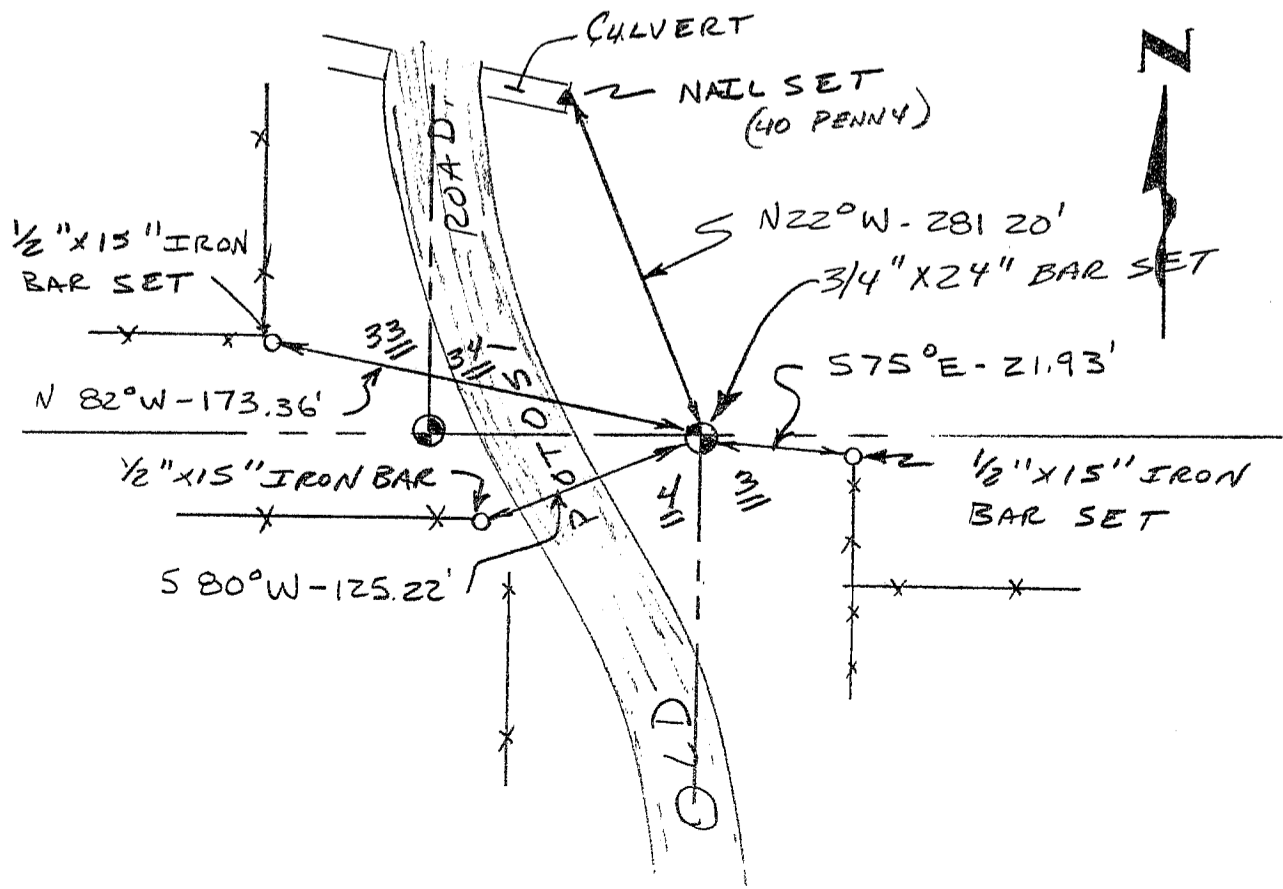
SEAL:



CERTIFIED CORRECT  
Larry L. Austin  
Registered Land Surveyor  
DATE: 12-20-97

TIE SKETCH

Show at least three (3) ties and monument

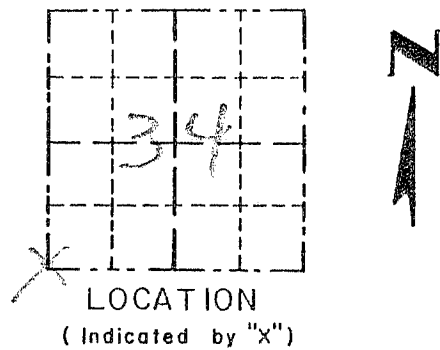


Survey Monument Record

TYPE OF MONUMENT 3/4" X 24" IRON  
BAR SET

CORNER NO. 127  
SECTION 34  
TOWN 4N  
RANGE 3W

FIELD BOOK: 96-01  
PAGE (9)



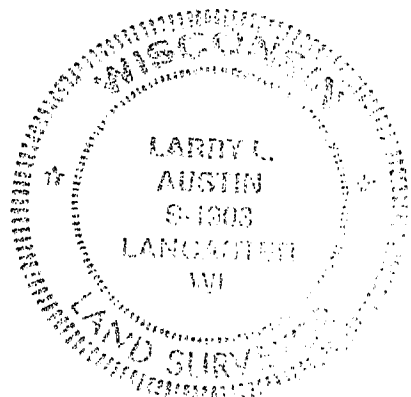
BASIS FOR MONUMENT LOCATION

(Use reverse side if necessary)

Show info such as: History of corner, with reference to Vol. and pg., dates, surveyor; exact description of monument replaced; if location computed, by taped or EDM traverse; landowner, remarks, etc.

CORNER SET IN 1832 B4 SIBLEY, NO RECORD OF CORNER FOUND SINCE ORIGINAL SURVEYS. I SET THE CORNER BASED ON AN OCCUPIED LOCATION. VERIFIED THIS LOCATION USING EDM METHODS.

SEAL:



CERTIFIED CORRECT

*Larry L. Austin*  
Registered Land Surveyor

DATE: 12/20/97

TIE SKETCH

Show at least three (3) ties and monument

